

HOMESTEAD

#50039

AN ADDITION TO CITY OF EVANSVILLE IND.

I hereby certify that the accompanying plan is a true and correct Plat of Lots 14, 15 and 16 of Block 4 Homestead Addition Owned By P. H. Klippel on April 10 1937.

P.H. Klippel

Subscribed and sworn to before me this day April 12, 1937.

A.C. Webb, Justice of Peace

(Seal)

My Commission Expires March 9, 1939.

Plat of proposed change of lot 14, 15 and 16 of Homestead Addition

Plat by Marion Klippel

Date April 10, 1937

(Seal)

Lic-2132

Approved by City Plan Commission of Evansville, Ind.

April 14, 1937.

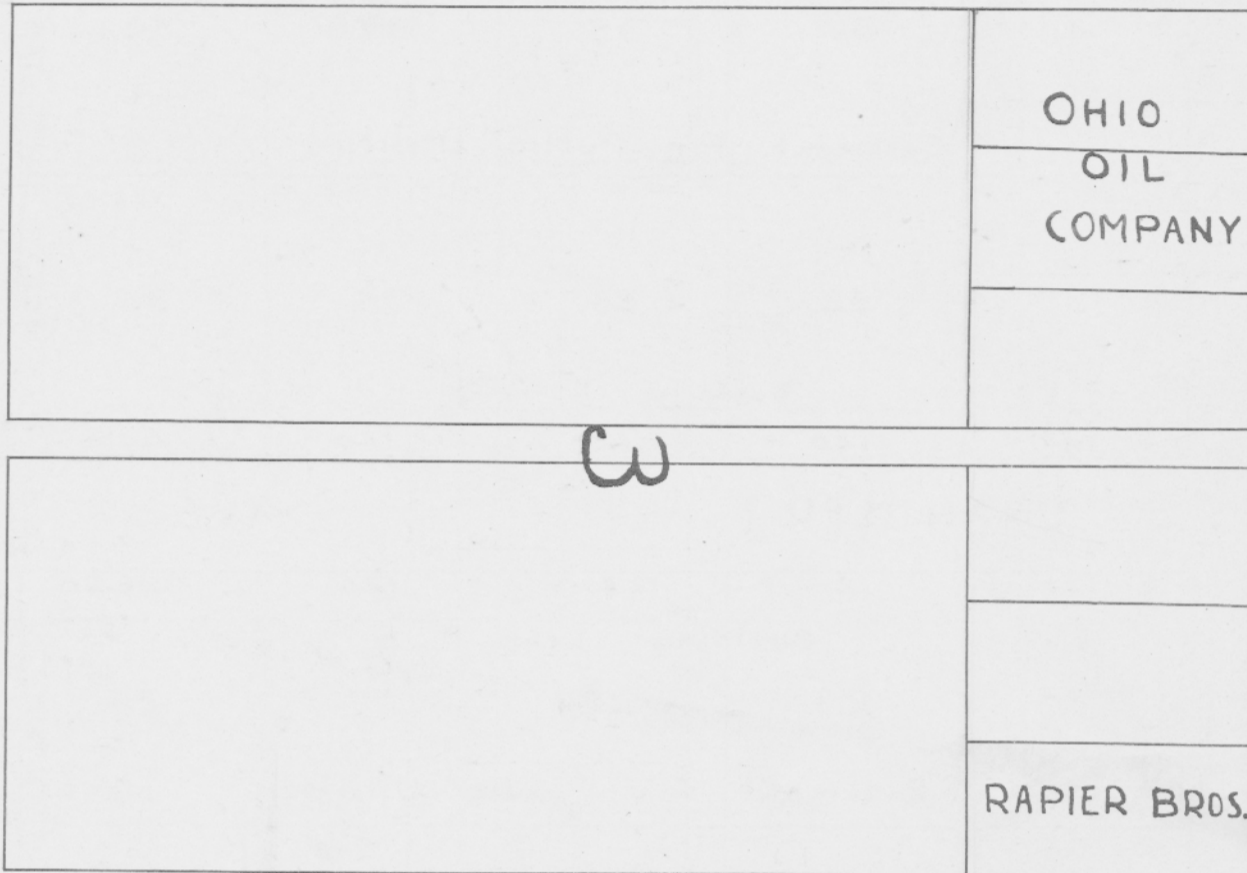
A. W. Hartig, Vice Pres.

A. W. Schoettlin, Sec'y

RECORDED.....APRIL...15, 1937.

Leo C. Lutzgerich, RVC

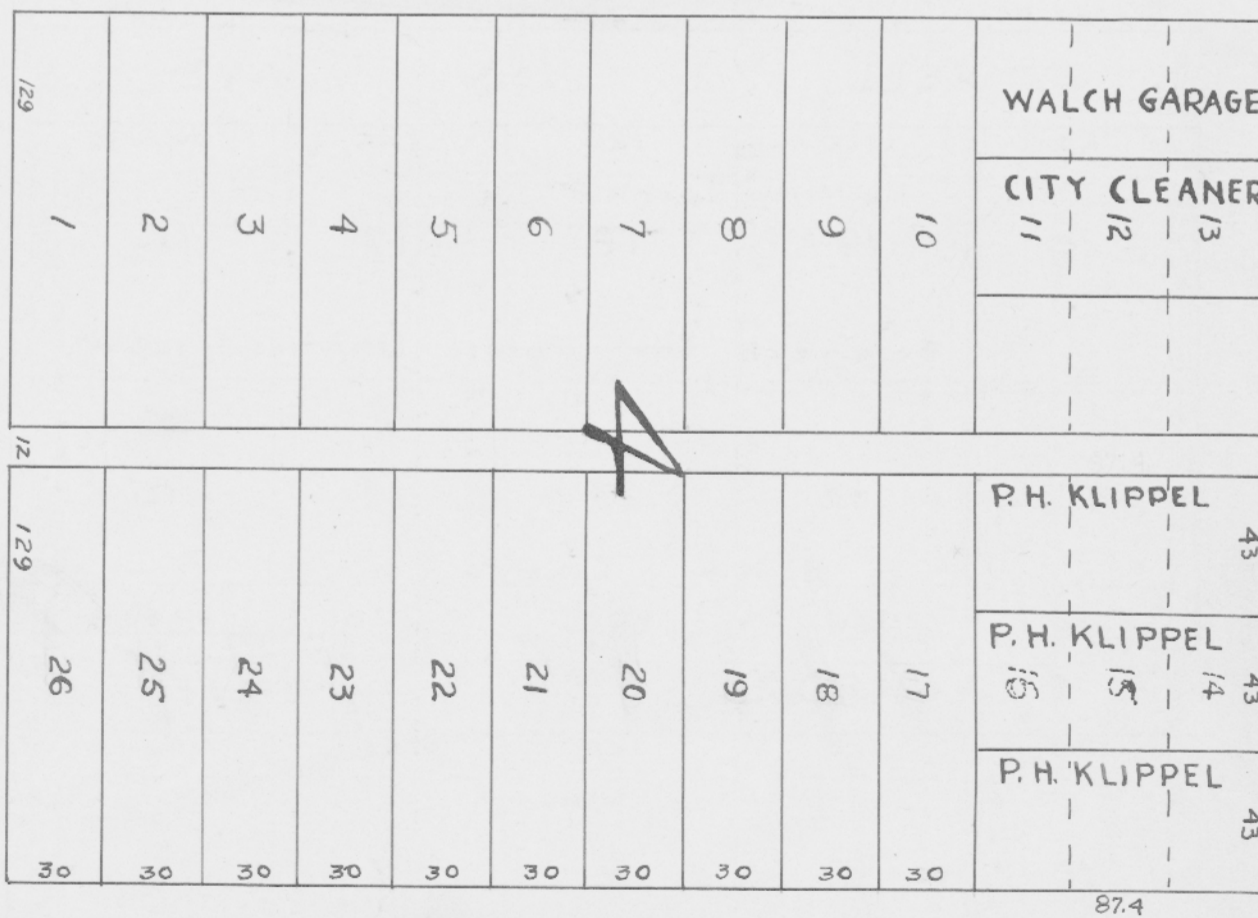
MORGAN AVE



EICHEL AVE

BARTLETT AVE

WILLOW ROAD



TENNESSEE ST

Scale 1" = 60'

