

189723

PLAT OF SECTION 4 OF HEBRON MEADOW

A SUBDIVISION OF PART OF THE SE 1/4 OF SECTION 26-6-10 DESCRIBED AS FOLLOWS, TO-WIT:-

COMMENCING AT A POINT ON THE WEST LINE OF SAID 1/4 SEC. A DISTANCE OF 240' N. 0°-04' E. FROM THE SW CORNER THEREOF, THENCE CONTINUING N. 0°-04' E. ALONG SAID WEST LINE 1464.70', THENCE S. 76°09'30" E. A DISTANCE OF 876.0', THENCE S. 9°19'30" E. A DIST. OF 267.38', THENCE S. 8°02'30" E. A DIST. OF 118.84', THENCE S. 5°42'50" E. A DIST. OF 554.70', THENCE S. 70°46'30" E. A DIST. OF 83.97', THENCE S. 81°46'30" E. A DIST. OF 108.47', THENCE N. 86°19'30" E. A DISTANCE OF 43.68' TO THE N.W. CORNER OF SECTION 3 OF HEBRON MEADOW IN MEADOW ROAD, THENCE S. 16°16' W. ALONG THE WEST LINE OF SAID SECTION 3 174.28' TO THE S.W. CORNER THEREOF, THENCE S. 78°-56' W. 44.65' TO THE N.W. CORNER OF SECTION 2 OF HEBRON MEADOW, THENCE S. 15°-16' W. ALONG THE WEST LINE OF SAID SECTION 2 A DISTANCE OF 226.25' TO THE NORTH LINE OF HEBRON MEADOW, SECTION 1, THENCE S. 89°-06' W. ALONG THE NORTH LINE OF SAID SECTION 1 A DISTANCE OF 554.0' TO POINT OF BEGINNING.

STATE OF INDIANA
VANDERBURGH COUNTY

Before me, a notary public, in and for said county and state, personally appeared Wilburn R. and Anna Harrell, the owners, and acknowledged the execution of this plat:

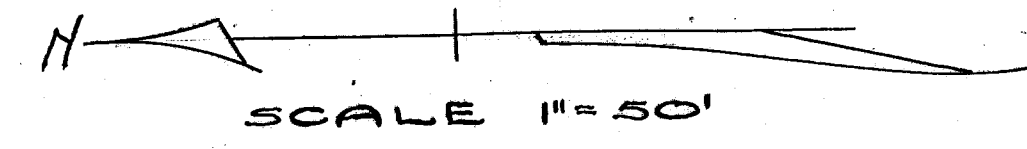
Wilburn R. Harrell *Anna Mary Harrell*
SIGNATURES OF OWNERS

Estel Lynn Phillips
NOTARY PUBLIC

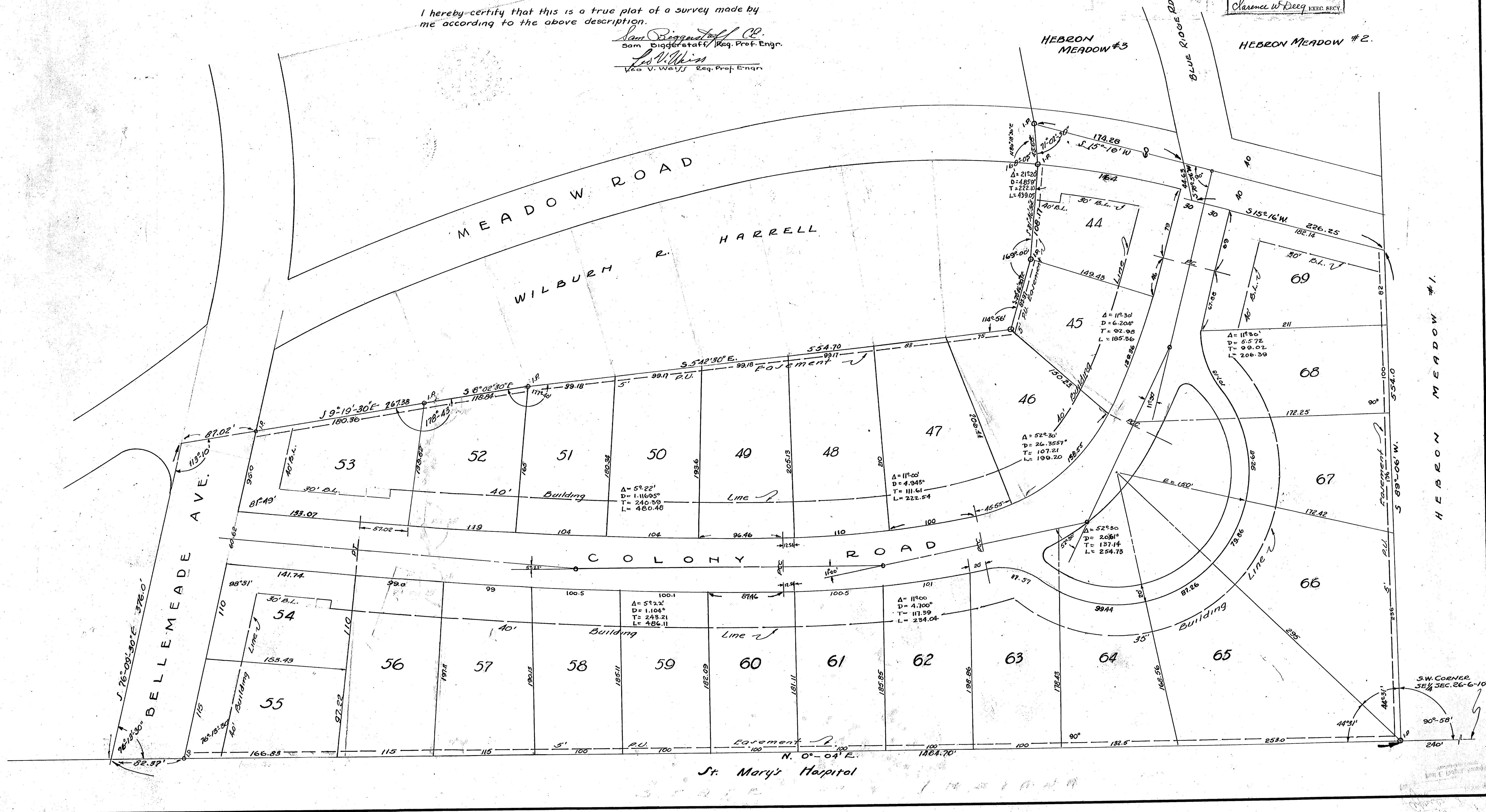
Witness my hand and notarial seal this 7th day of April, 1953.
My commission expires September 25, 1954.

I hereby certify that this is a true plat of a survey made by me according to the above description.

Sam Diggerstaff C.E.
Sam Diggerstaff / Reg. Prof. Eng.
Leo V. Weiss
Leo V. Weiss / Reg. Prof. Eng.



APPROVED BY
COUNTY PLAN COMMISSION
OF VANDERBURGH COUNTY, INDIANA
MAR 12 1953
Fred Roeder PRES.
Clarence W. Deeg EXEC. SECY.



RECEIVED FOR RECORD

at

2:10

April 19 1900

Recorded in

Record No.

Paul E. Padgett, Recorder
Vanderburgh County

W. MEADOWS

6.00

540