

92740

# PLAT OF SECTION 2 OF HEBRON MEADOW.

A SUBDIVISION OF PART OF THE S.E. 1/4 OF SECTION 26-6-10.

### DESCRIPTION:-

Beginning of the northeast corner of Lot 12 of SECTION 1 of HEBRON MEADOW as recorded in PLAT Book I, page 119 of the records of the Recorder of Vanderburgh County, Indiana, and running thence North 692 feet; thence West 248.31 feet; thence S-2°43'W a distance of 206.87 feet; thence in a southwesterly direction along the arc of a curve to the right of radius 210.14 feet a distance of 165.84 feet; thence continuing in a southwesterly direction along the arc of a curve to the right of radius 438.76 feet a distance of 237.39 feet; thence S-78°56'W a distance of 144.78 feet; thence S-15°16'W a distance of 226.25 feet to the northeast corner of Lot 5, SECTION 1 of HEBRON MEADOW; thence eastwardly along the north line of said SECTION 1 of HEBRON MEADOW a distance of 738.18 feet to the place of beginning.

widths of streets and easements of lots are as shown on plat.  
Curved boundaries of lots are given as lengths of long chords.

STATE OF INDIANA }  
VANDERBURGH COUNTY } S.S.

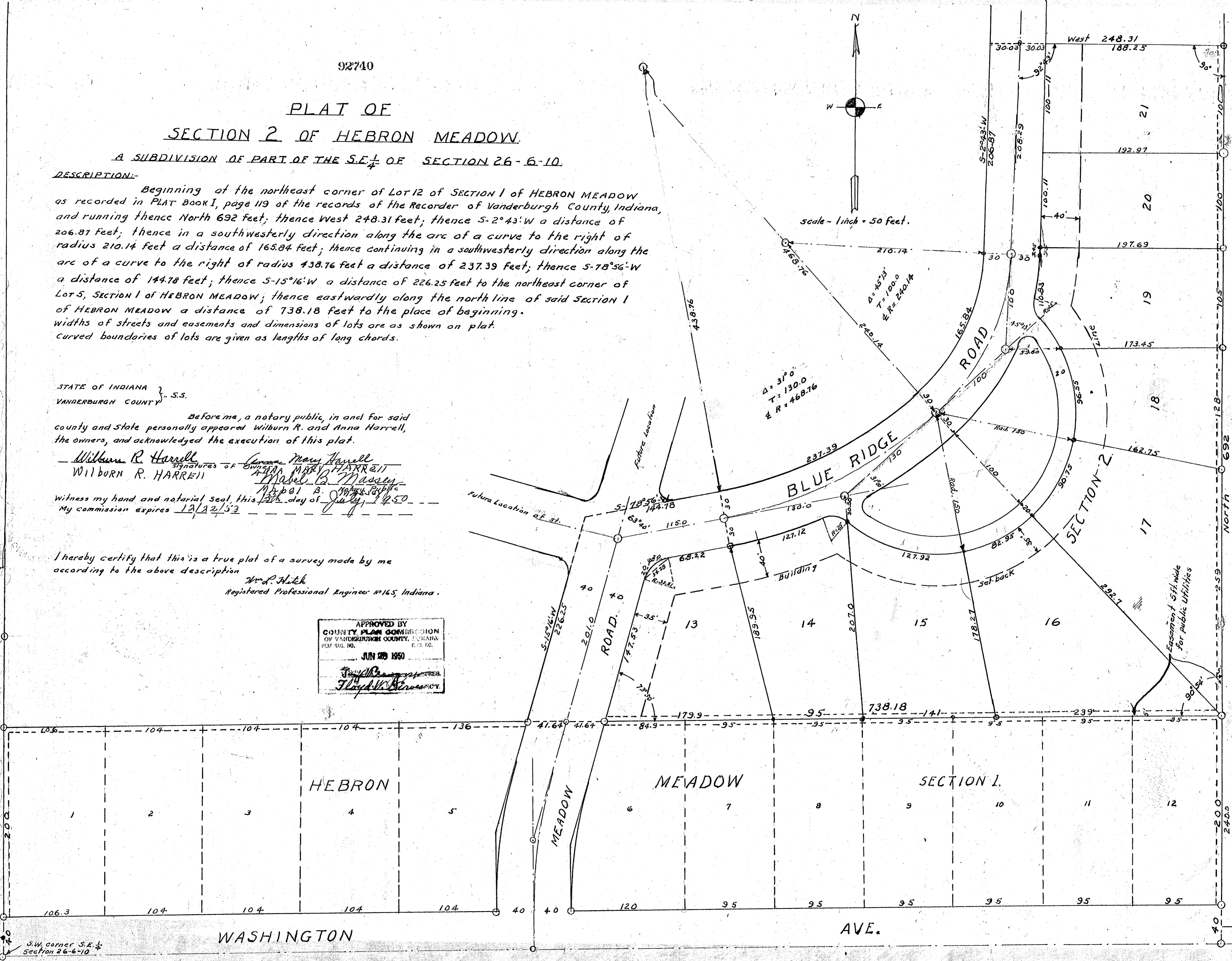
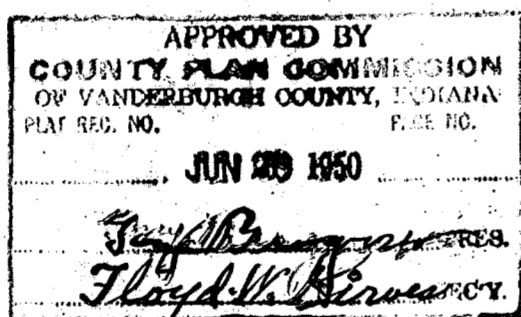
Before me, a notary public, in and for said county and State personally appeared Wilburn R. and Anna Harrell, the owners, and acknowledged the execution of this plat.

*Wilburn R. Harrell*      *Anna Mary Harrell*  
Signatures of Owners  
WILBURN R. HARRELL      ANNA MARY HARRELL

Witness my hand and notarial seal, this 27th day of July, 1950  
My commission expires 12/22/53

I hereby certify that this is a true plat of a survey made by me according to the above description

*Wm. P. Hitch*  
Registered Professional Engineer #165, Indiana.



MANSON L. & MABEL REICHERT.

RECEIVED FOR RECORD  
JUL 28 1950

RECEIVED FOR RECORD

at 9:15 ..... A.M.

NW. 8 ..... 1950

Recorded in Plat. Record No. 9

223

L. Elmendorf, Recorder  
Ashtaburgh County