



CASH WAGGNER & ASSOCIATES, PC
CONSULTING ENGINEERS - LAND SURVEYORS

414 CITADEL CIRCLE
SUITE B
EVANSVILLE, IN 47715
PH: 812.401.5561

332 THIRD AVENUE
SUITE 13
JASPER, IN 47546
PH: 812.634.5015

| Curve Table | | | | | | |
|-------------|-------------|-----------------|---------|--------|------------|--------------|
| NUMBER | DELTA ANGLE | CHORD DIRECTION | TANGENT | RADIUS | ARC LENGTH | CHORD LENGTH |
| C-1 | 125°35'08" | N 60°20'30" W | 660.64 | 354.34 | 764.30 | 634.52 |
| C-2 | 07°47'38" | S 55°58'08" W | 23.50 | 545.00 | 46.95 | 46.89 |
| C-3 | 08°11'52" | S 88°28'56" W | 27.07 | 500.00 | 54.09 | 54.06 |
| C-4 | 16°54'38" | N 08°52'27" W | 29.75 | 200.00 | 59.05 | 58.61 |
| C-5 | 06°39'35" | S 86°42'47" W | 29.09 | 500.00 | 58.12 | 58.08 |
| C-6 | 34°48'52" | N 72°33'09" W | 15.67 | 50.00 | 30.88 | 29.91 |
| C-7 | 07°22'34" | N 58°32'25" E | 13.49 | 209.54 | 26.95 | 26.95 |
| C-8 | 156°59'12" | N 45°58'28" W | 1028.55 | 209.54 | 575.58 | 410.27 |
| C-9 | 07°47'38" | S 55°58'08" W | 13.62 | 200.00 | 27.21 | 27.18 |
| C-10 | 03°35'36" | N 19°07'54" W | 6.27 | 200.00 | 12.54 | 12.54 |
| C-11 | 20°30'14" | N 10°40'15" W | 18.09 | 100.00 | 35.79 | 35.60 |
| C-12 | 15°41'53" | S 87°38'15" W | 72.57 | 525.00 | 143.84 | 143.39 |
| C-13 | 15°41'53" | S 87°38'15" W | 44.80 | 325.00 | 89.04 | 88.77 |
| C-14 | 17°38'07" | N 81°11'46" W | 51.38 | 325.00 | 101.92 | 101.51 |
| C-15 | 17°38'07" | N 81°11'46" W | 51.38 | 325.00 | 101.92 | 101.51 |
| C-16 | 90°00'00" | S 44°49'10" W | 100.00 | 100.00 | 157.08 | 141.42 |
| C-17 | 26°00'35" | S 12°35'10" W | 5.31 | 25.00 | 10.44 | 10.35 |

| Line Table | | |
|------------|---------------|----------|
| NUMBER | DIRECTION | DISTANCE |
| L1 | N 88°57'02" W | 52.84' |
| L2 | S 74°33'46" W | 87.12' |
| L3 | N 89°57'25" W | 61.79' |
| L4 | S 37°51'57" W | 42.92' |
| L5 | N 00°10'50" W | 10.00' |
| L6 | N 55°19'04" E | 17.76' |
| L7 | S 87°04'43" E | 12.81' |
| L8 | S 89°49'10" W | 20.39' |
| L9 | S 19°02'28" W | 9.57' |
| L10 | N 54°44'05" W | 26.34' |
| L11 | N 76°51'57" E | 22.94' |

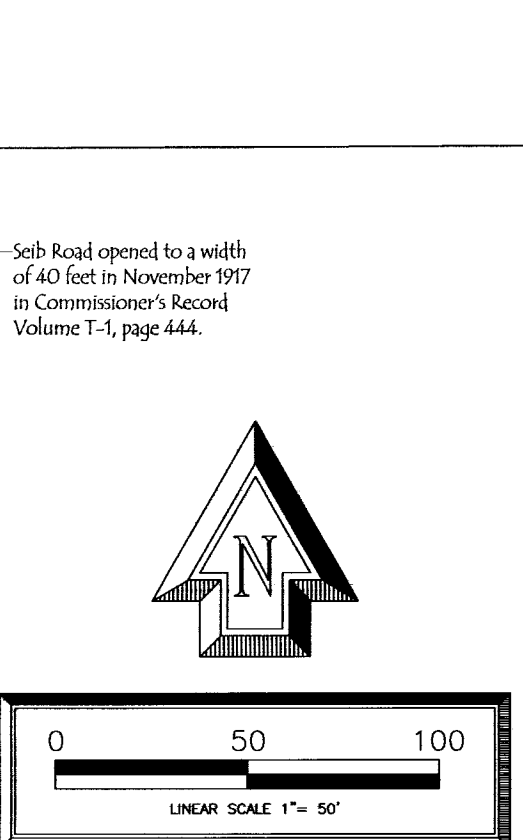
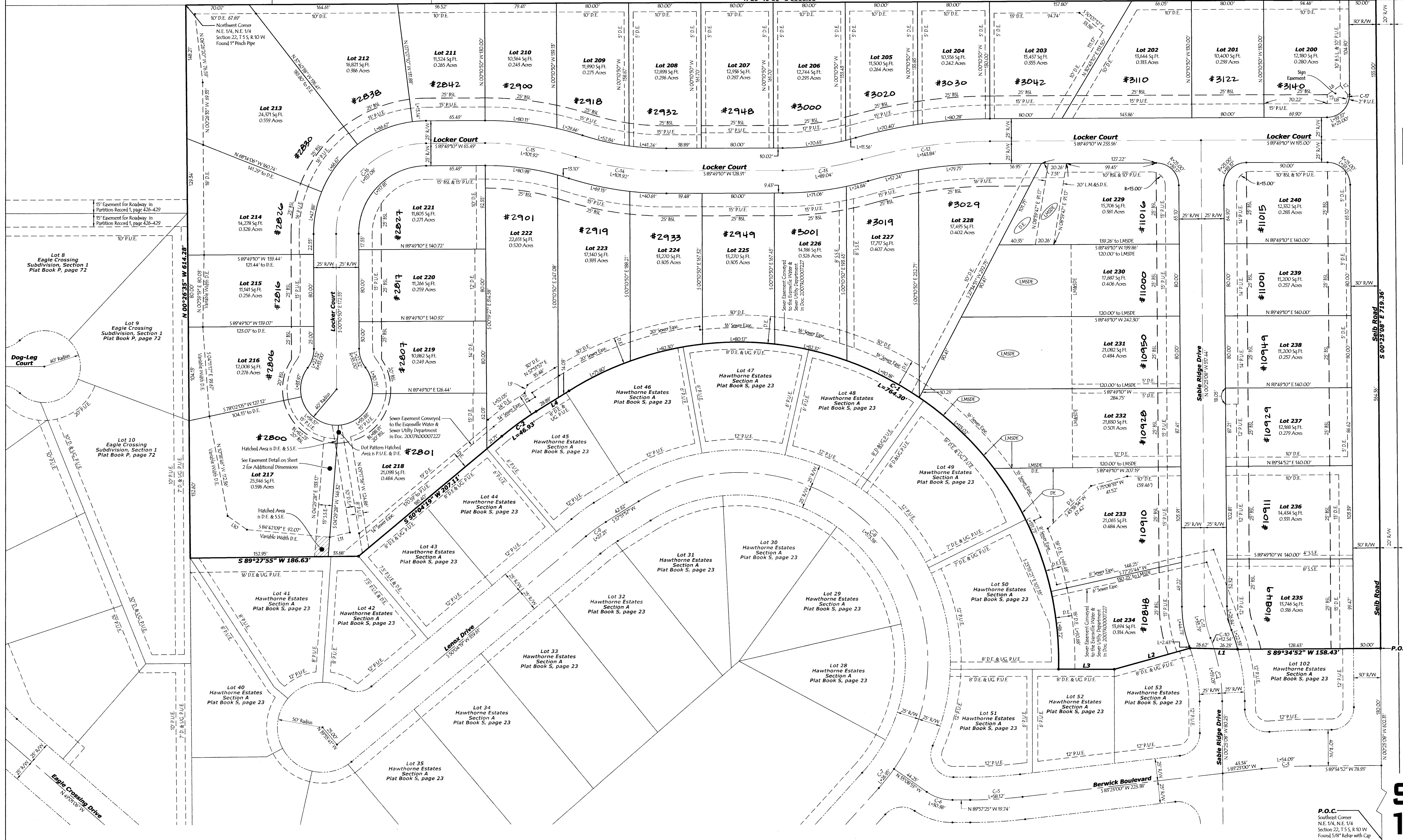
HAWTHORNE ESTATES SECTION B

114

DULY ENTERED FOR TAXATION SUBJECT TO FINAL ACCEPTANCE FOR TRANSFER

Aug 31, 2017
BRIAN GERTH AUDITOR
4497

RECEIVED FOR RECORD
DATE 08-31-17 2:55p
PLAT BOOK 114
PAGE 114
INSTR# 201700021457
DEBBIE STUCKI RECORDER
VANDERBURGH COUNTY



LEGEND

- P.O.C. Point of Beginning
- P.O.C. Point of Commencement
- R/W Right-of-Way
- BSL Building Setback Line
- P.U.E. Public Utility Easement
- D.E. Drainage Easement
- S.S.E. Sanitary Sewer Easement

Self Road opened to a width of 40 feet in November 1997 in Commissioner's Record Volume T-1, page 444.

Self Road opened to a width of 40 feet in November 1997 in Commissioner's Record Volume T-1, page 444.



P.O.C. Southeast Corner N.E. 1/4, N.E. 1/4 Section 22, T.5 S, R.10 W Found 5/8" Rubber with Cap