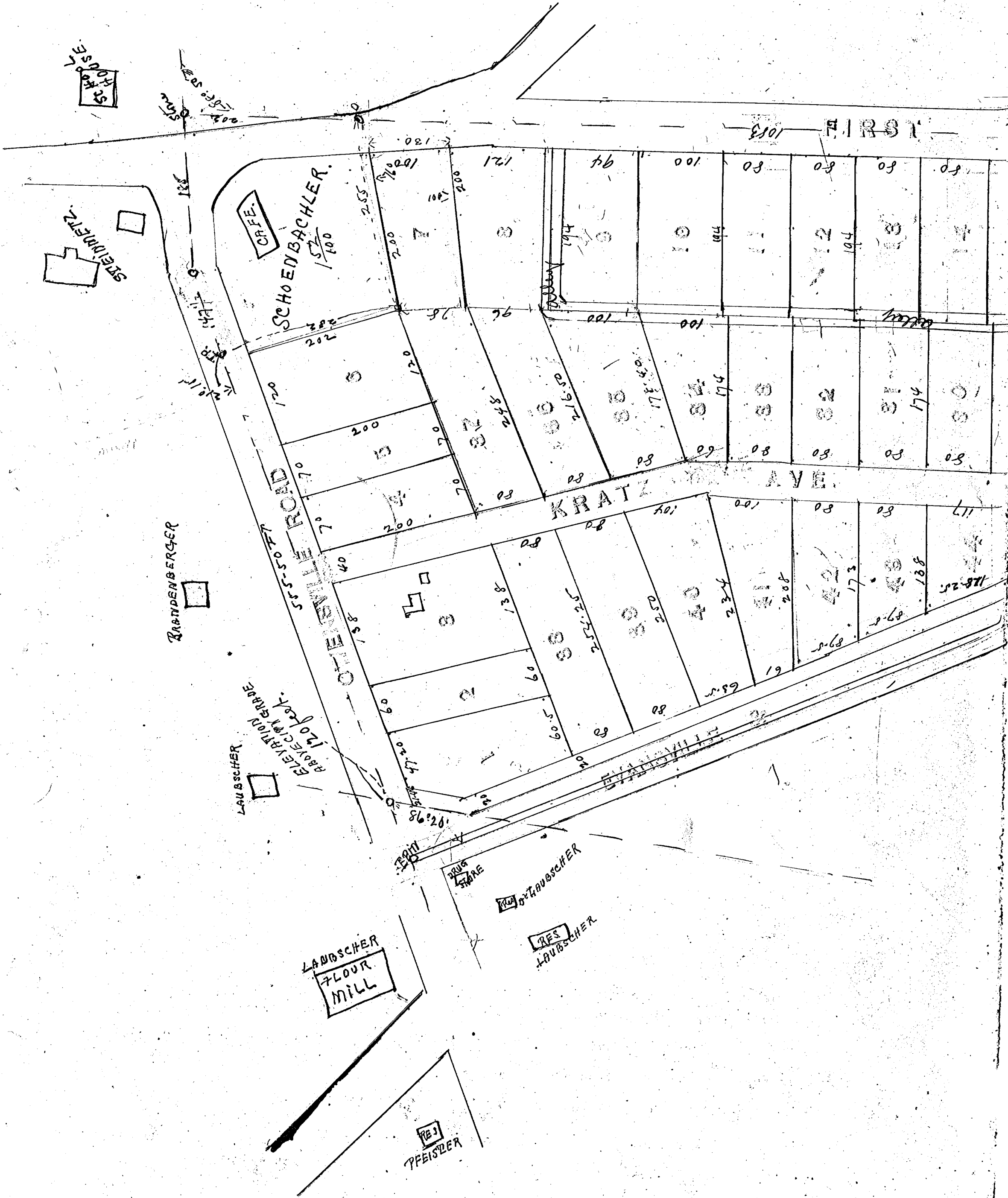
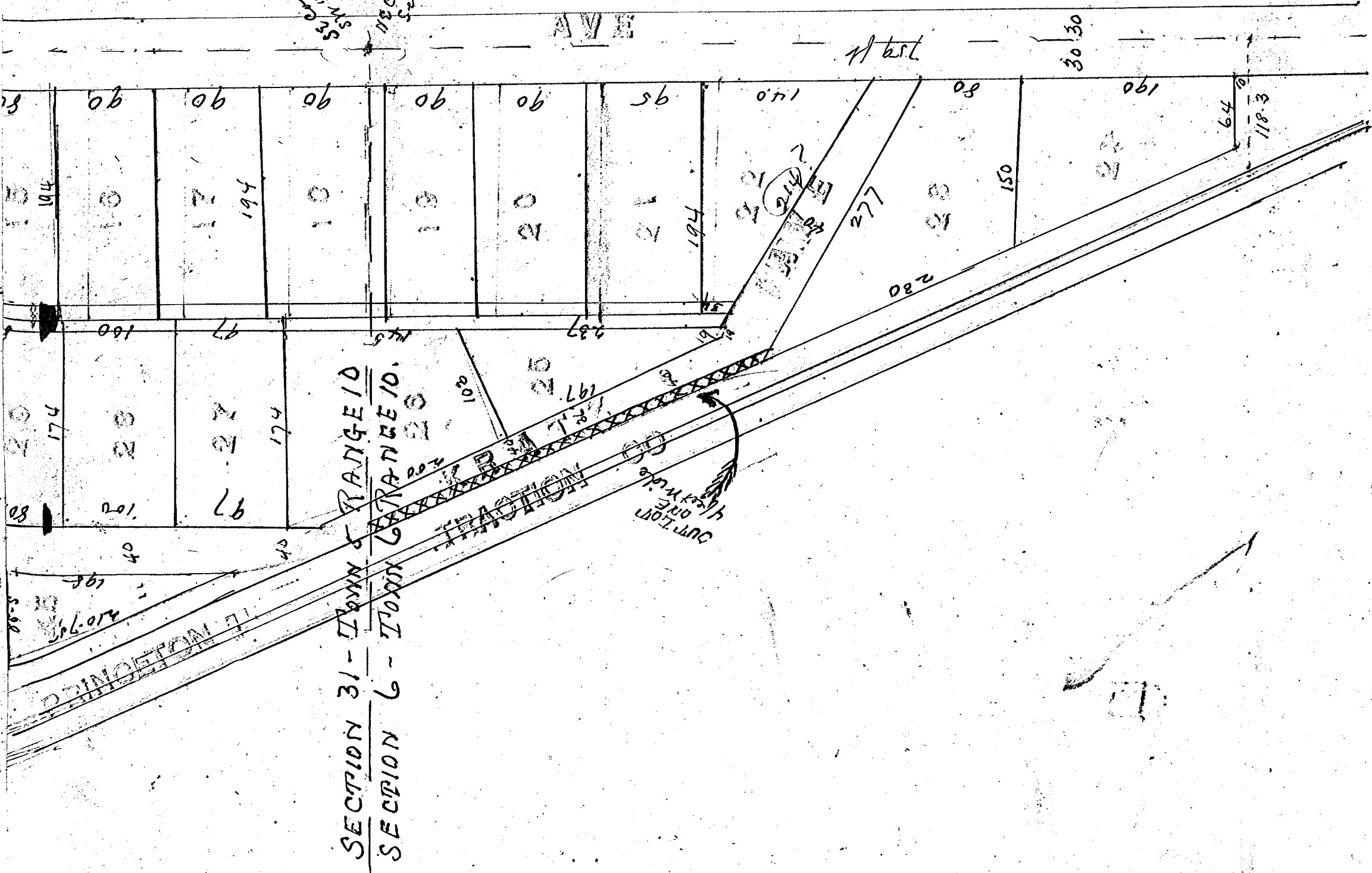


FRIDY



PLATE

See map sheet 31-5-10
See map sheet 6-6-10



Friday Place -- Laid out by the Highland Co., on part of the southwest quarter of section 31 township 5 south range 10 west and on part of the northeast quarter of the northwest quarter of section 6 township 6 south range 10 west in Vanderburgh County Indiana
 Dimensions of lots and width of streets are as shown on plat in feet and decimals

Frederick J. Scholz, President.
 Chas. J. Scholz Secy & Treas.

State of Indiana Vanderburgh County SS:

Before me, Guild C. Foster, Clerk of the Vanderburgh Circuit Court personally appeared the above named The Highland Land Company by Frederick J. Scholz, president and Chas. J. Scholz Secretary and Treasurer thereof and acknowledged the execution of the annexed Plat.

Witness my hand and official seal this 8th day of March 1906

Guild C. Foster,

Clerk, V.C.C.

recorded March 8th 1906.

Theo. Levetor
 R.V.C.

Scale 100 feet per inch.