

RECORDED
July 7, 1936
Page
Leo. E. Lintzenich, Recorder
Vanderburgh County
18573

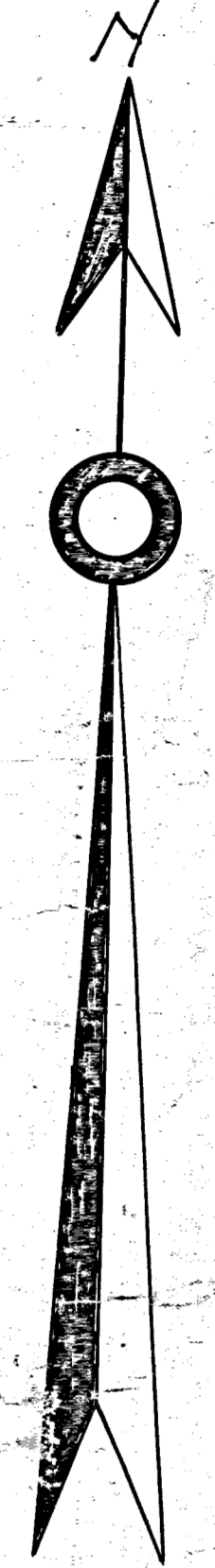
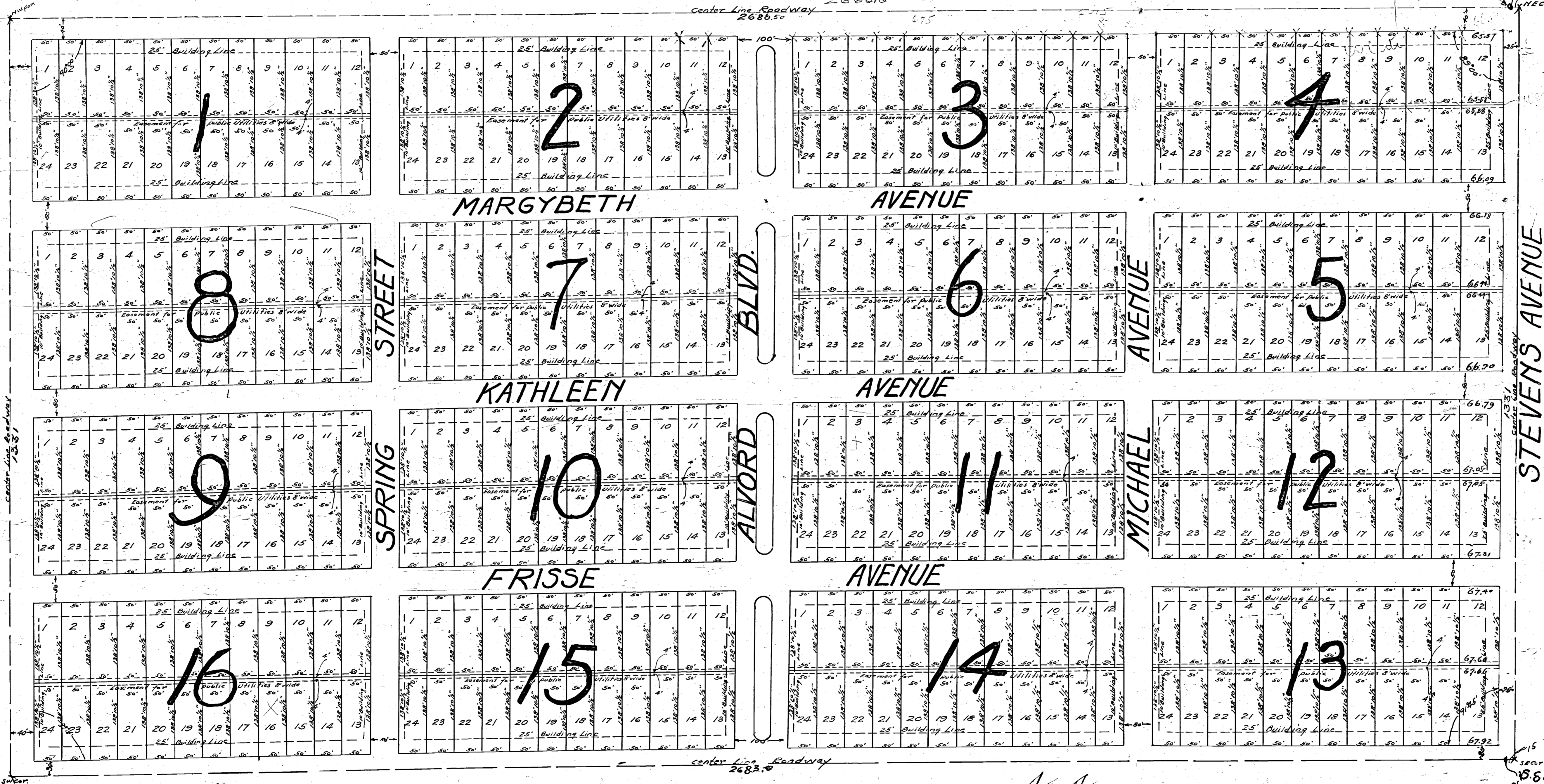
138.87
277.74
55.00
332.74 XX
37.74
666.48 XXX
327.74
988.22 XXXX

EASTVIEW TERRACE
as laid out by the Proprietor thereof on lots 1-2-3-4-5-6-8-7 of the North half of the North west quarter of Section 3 Township 7 South, Range 10 West and also
a strip of land 15 feet in width of the west side of the North West Quarter of the North East Quarter of Section 3, Township 7 South, Range 10 West

SCALE
1" = 100'

POLLACK AVENUE

WEINBACH AVENUE



Scale 100 ft per inch
M.S. Saunders
C&S Surveyor

State of Indiana } ss Before me the undersigned a Notary Public in and for said County and State
Vanderburgh County } personally appeared Fred. M. Frisse, proprietor thereof and as such
acknowledged the execution of this plat

Witness my hand and Notarial Seal this 29 day of May 1936
my Commission Expires June 8-1937
Ester Metz



Assessment For Public Utilities
An agreement for Public Utilities purposes is hereby reserved on
over and above the lots and spaces upon this plan defined
and bounded by dotted lines and marked "Assessment For Public
Utilities" including the easement for Public
Utilities and in the case of a perfect easement, the easement
and in the case of a perfect easement, the easement
and in the case of a perfect easement, the easement

NOTE
Private restrictions adopted in protection of lots in this
plat are listed on separate sheets accompanying
and made a part of this plat.

July 7 1936
R. K. Hulman

2900
245
205
205
205
205