

SE corner, SE 1/4, SE 1/4,
Sec. 28-145-R10W
I.Rod w/plastic cap
stamped Kuester (Ind)
NW corner, NW 1/4, NW 1/4,
Sec. 28-145-R10W

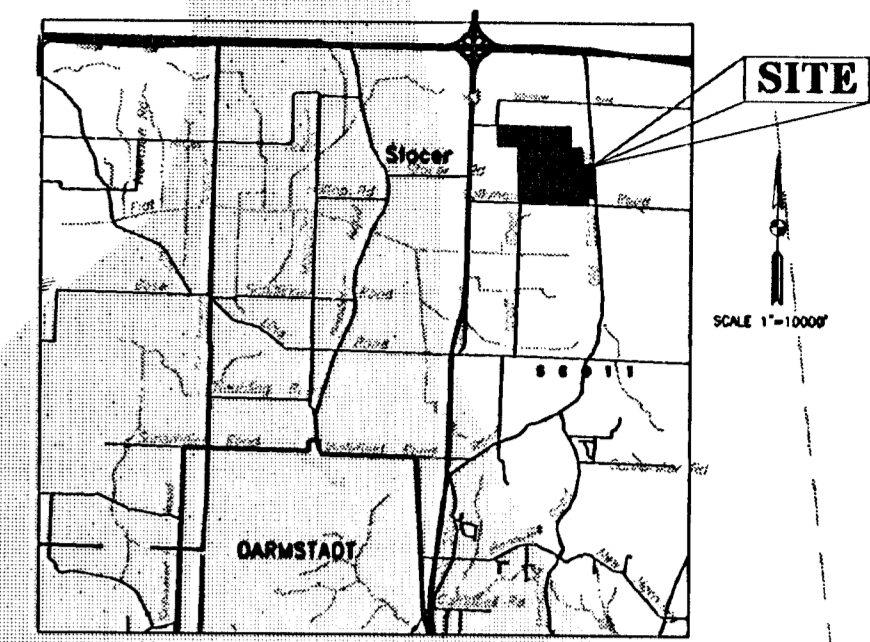
SEE SHEET NO. 2

CAMBRIDGE

SECTION 1

Sheet 1 of 3

NW corner, W 1/2, NE 1/4,
Sec. 28-145-R10W
30" Sycamore tree.
Witnesses reported a
stone once existed at
base of tree.



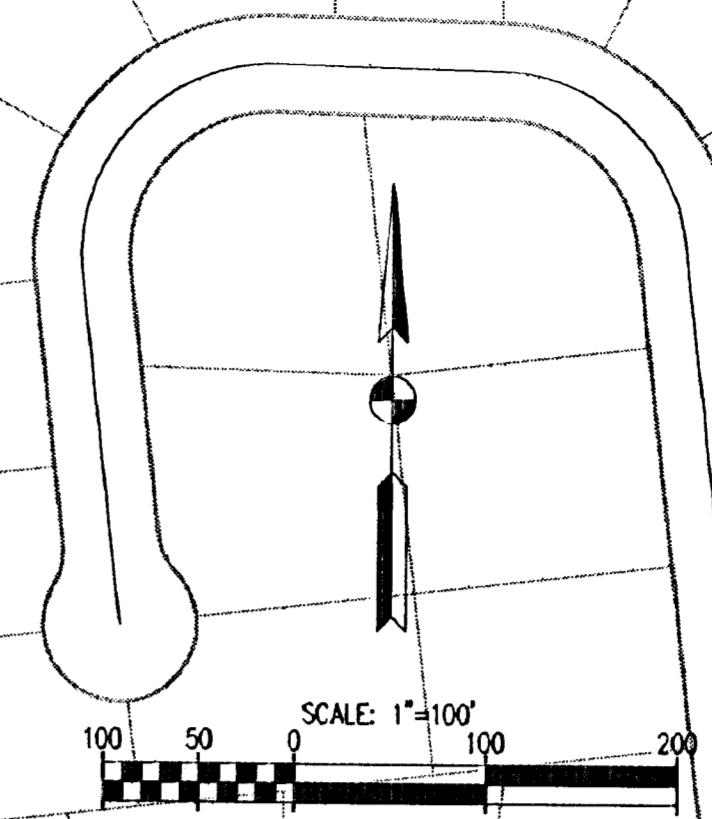
LOCATION MAP
VANDERBURGH CO.

SEP 8 1999
SEP 8 1999
SEP 8 1999

6250

SEP 08 1999

Cambridge, IN



124
124
124

GOLF COURSE
Area
39.71 Acres
(1,729,805 S.F.)

GOLF COURSE
Area
60.44 Acres
(2,632,573 S.F.)

P.O.B.
Lake 1 Esmt.

P.O.B.
Lake 4
& 6 Esmt.

P.O.B.
Lake 2 Esmt.

CODE # 7-020-0-0-0-3
29-A-10
SE 1/4 NE 1/4
29-A-10
SE 1/4
Cambridge
GOLF CLUB, LLC
CODE # 7-020-0-0-0-3
SW 1/4 NW 1/4
29-A-10

Q-37

SW corner, NW 1/4,
Sec. 28-145-R10W
P.K. Nail (Ind)

SE corner, W 1/2, NW 1/4,
Sec. 28-145-R10W
RR. Spike (Ind)

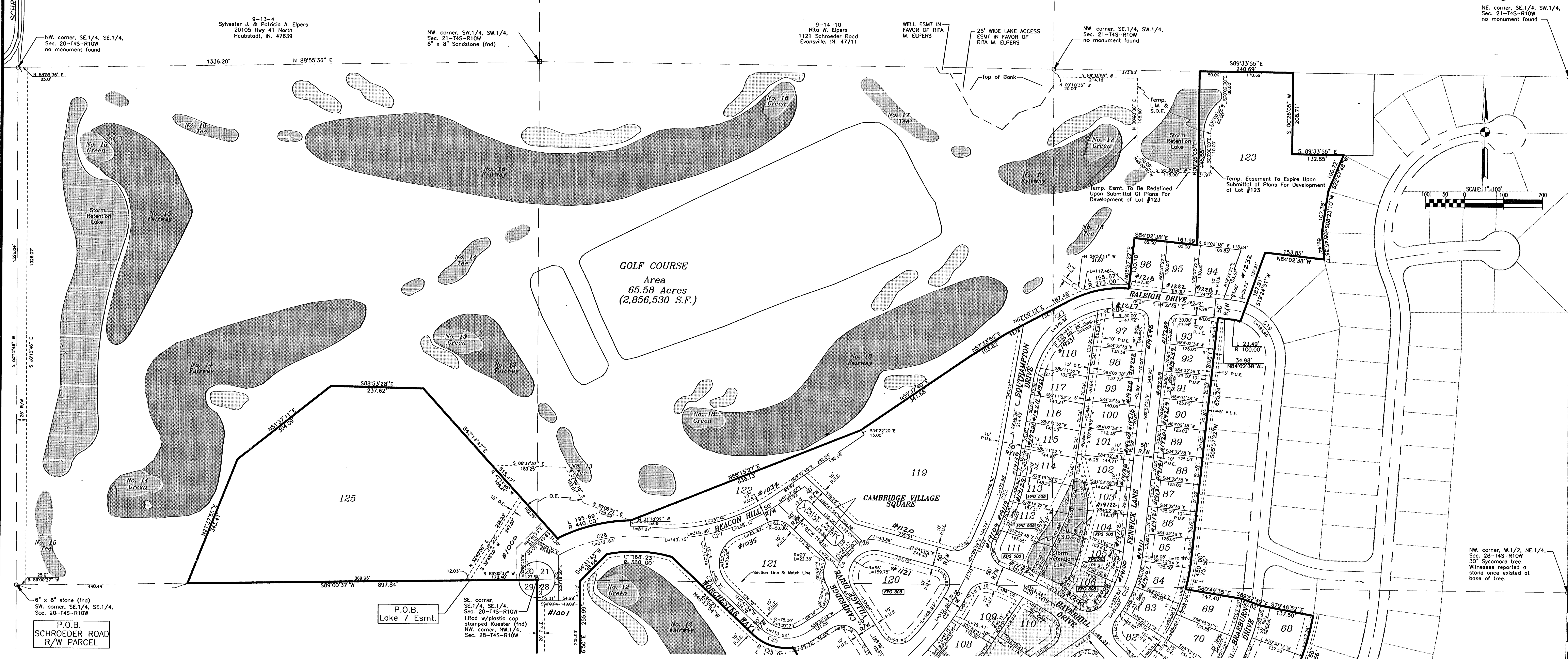
SE corner, NW 1/4,
Sec. 28-145-R10W
1 1/2" pipe (Ind)

CAMBRIDGE

SECTION 1

Sheet 2 of 3

SCHROEDER ROAD



SEE SHEET NO. 2

CURVE TABLE

NUMBER	Lt.	lc	Da	Dc	CD	T	R	L	LC	E	M
C1	21'48"22"	21'48"22"	09'15"23"	05'15"30"	N 10°43'02" E	209.96	1090.00	414.84	412.34	20.04	19.68
C2	08'41"02"	08'41"02"	02'10"50"	02'10"50"	N 25°57'44" E	199.51	2627.70	398.27	397.88	7.56	7.54
C3	63'40"13"	63'40"13"	06'21"58"	06'22"10"	N 01°31'51" W	558.79	900.00	1000.13	949.46	159.36	135.39
C4	79'34"04"	76'34"04"	81'51"04"	91'10"10"	N 04°59'04" E	55.25	70.00	93.55	86.74	19.18	15.05
C5	73'33"18"	73'33"18"	38'11"50"	38'56"33"	N 50°35'53" E	112.12	150.00	192.57	179.61	37.27	29.85
C6	76'33'30"	76'33'30"	38'11"50"	38'56'33"	N 52°05'59" E	118.37	150.00	200.43	185.85	41.08	32.26
C7	83'44'50"	83'44'50"	49'50'12"	47'09'23"	S 47°44'51" W	112.05	125.00	182.71	166.87	42.87	31.92
C8	95'51'58"	95'51'58"	57'17'45"	59'59'60"	S 42°03'33" W	110.80	100.00	167.32	148.47	49.25	33.00
C9	13'37'60"	13'37'60"	28'38'52"	28'57'18"	N 83°11'28" W	23.91	200.00	47.59	47.48	1.42	1.41
C10	13'37'60"	13'37'60"	19'03'55"	19'11'17"	N 83°11'28" W	35.86	500.00	71.38	71.22	2.14	2.12
C11	38'08'46"	38'08'46"	28'38'52"	28'57'18"	N 79°58'06" W	69.15	200.00	133.15	130.71	11.62	10.98
C12	27'58'22"	27'58'22"	04'14'39"	04'14'42"	N 77°50'25" E	336.25	1550.00	659.10	652.57	41.25	40.02
C14	54'44'06"	54'44'06"	11'43'30"	15'24'18"	N 29°11'39" E	25.88	50.00	47.77	45.97	6.30	5.60
C15	47'40'14"	47'40'14"	57'17'45"	15'24'18"	N 38°05'40" W	44.18	100.00	83.20	80.82	9.32	8.53
C16	57'10'32"	57'10'32"	45'50'12"	47'09'23"	N 33°20'31" W	68.12	125.00	124.74	119.63	17.36	15.24
C17	03'41'01"	03'41'01"	11'27'33"	11'28'42"	N 53°21'23" E	16.08	500.00	32.15	32.14	0.26	0.26
C18	46'12'00"	46'12'00"	11'27'33"	11'28'42"	N 28°24'52" E	213.27	500.00	403.17	392.34	43.58	40.09
C19	89'21'31"	89'21'31"	45'50'12"	47'09'23"	N 39°21'53" W	123.61	125.00	194.95	175.78	50.80	36.12
C20	49'14'32"	49'14'32"	19'03'55"	19'11'17"	N 30°34'38" W	137.48	300.00	257.83	249.97	30.00	27.28
C21	26'52'22"	26'52'22"	08'35'22"	08'35'51"	N 37°33'10" E	159.36	667.04	312.86	310.00	18.77	18.26
C22	14'18'51"	14'18'51"	08'09'05"	08'09'05"	N 18°57'53" E	88.26	702.90	175.60	175.15	5.52	5.48
C23	86'09'14"	86'09'14"	22'55'06"	23'04'26"	N 52°52'45" E	233.76	250.00	375.92	341.49	92.26	87.39
C24	36'18'42"	36'18'42"	57'17'45"	59'59'60"	S 28°39'33" E	32.76	100.00	63.32	62.27	5.23	4.97
C25	76'34'04"	76'34'04"	57'17'45"	15'24'18"	S 85°04'56" E	78.93	100.00	133.84	123.91	27.40	21.50
C26	34'46'56"	34'46'56"	14'19'26"	14'21'14"	N 78°13'03" E	125.28	400.00	242.33	239.11	19.16	18.29
C27	39'58'51"	39'58'51"	11'27'33"	11'28'42"	N 75°37'05" E	181.69	500.00	348.90	341.86	32.06	30.13
C28	62'06'49"	62'06'49"	81'51'04"	91'10"10"	N 74°15'30" E	42.16	70.00	75.59	72.22	11.71	10.03
C29	30'01'57"	30'01'57"	07'09'43"	07'10'00"	S 59°40'07" E	214.60	800.00	419.33	414.55	28.28	27.32
C30	31'24'22"	31'24'22"	11'27'33"	11'28'42"	S 60°21'20" E	140.57	500.00	274.07	270.65	19.38	18.66

LOT AREAS

LOT	SO FT	ACRES	LOT	SO FT	ACRES	LOT	SO FT	ACRES	LOT	SO FT	ACRES
1	52879	1.2139	27	34270	0.7867	53	22103	0.5074	79	9840	0.2259
2	47892	1.0994	28	22263	0.5111	54	15000	0.3444	80	9840	0.2259
3	634013	634013	29	19200	0.4408	55	15000	0.3444	81	11456	0.2630
4	86630	1.5296	30	19200	0.4408	56	15000	0.3444	82	9867	0.2265
5	29317	0.6730	31	17608	0.4042	57	18276	0.4196	83	10284	0.2361
6	29317	0.6730	32	18916	0.4342	58	16258	0.3732	84	10284	0.2361
7	41670	0.9566	33	18916	0.4342	59	14793	0.3396	85	9136	0.2097
8	43284	0.9937	34	21134	0.4852	60	14948	0.3432	86	8750	0.2009
9	28002	0.6428	35	29086	0.6677	61	15332	0.3520	87	8750	0.2009
10	31082	0.7135	36	24000	0.5510	62	19567	0.4492	88	8750	0.2009
11	50358	1.1561	37	24000	0.5510	63	12430	0.2853	89	8750	0.2009
12	26433	0.6068	38	24000	0.5510	64	16652	0.3823	90	8750	0.2009
13	24446	0.5612	39	25319	0.5812	65	13537	0.3108	91	8750	0.2009
14	23100	0.5303	40	25745	0.5910	66	13218	0.3034	92	8750	0.2009
15	24058	0.5523	41	25745	0.5910	67	13218	0.3034	93	9807	0.2251
16	25920	0.5950	42	25745	0.5910	68	13218	0.3034	94	11735	0.2684
17	29868	0.6857	43	18941	0.4348	69	12684	0.2912	95	11050	0.2537
18	26616	0.6110	44	17941	0.4119	70	12982	0.2980	96	11050	0.2537
19	26596	0.6108	45	17369	0.3987	71	16680	0.3829	97	13760	0.3159
20	42795	0.9824	46	18470	0.4240	72	15110	0.3469	98	9559	0.2194
21	30375	0.6973	47	14147	0.3248	73	13950	0.3202	99	9722	0.2232
22	29340	0.6736	48	13256	0.3043	74	13950	0.3202	100	9885	0.2269
23	36503	0.8380	49	17161	0.3940	75	13950	0.3202	101	10048	0.2307
24	34356	0.7897	50	22489	0.5163	76	15344	0.3532	102	10211	0.2344
25	26000	0.5959	51	16650	0.3824	77	12238	0.2809	103	10374	0.2382
26	26000	0.5959	52	19805	0.4547	78	9840	0.2259	104	12068	0.2770

MAINTENANCE & REPAIR OF STORM WATER DRAINAGE SYSTEM

The Cambridge Lot Owners' Association shall be responsible, including financially, for the maintenance and repair of the entire storm water drainage system, its parts, and easements within or attached to this subdivision and outside of county accepted road rights-of-way.

The Golf Course Owner shall be responsible, including financially, for the maintenance and repair of the entire storm water drainage system, its parts, and easements within the Golf Course proper.

The Responsibilities of both entities shall include:

- Mowing grass, controlling weeds, and maintaining the designed cover of the waterways, storage basins, and easements in accordance with applicable ordinances.
- Keeping all parts of the storm water drainage system operating at all times as designed and as constructed; and free of all trash, debris, and obstructions to the flow of water.
- Keeping the channels, embankments, shorelines, and bottoms of waterways and basins free of all erosion and sedimentation.
- Maintaining and repairing the storm water drainage system in accordance with the conditions described on the approved street and/or drainage plans on file in the County Surveyor's Office, and/or the County Engineer's Office; and in compliance with the County Drainage Ordinance.
- Preventing all persons or parties from causing any unauthorized alterations, obstructions, or detrimental actions from occurring to any part of the storm water drainage system and easements within or attached to this subdivision.

NOTICE: Any pipe, fence, wall, building, pool, patio, planting, stored material, excavation, fill, or other construction, improvement, addition to, or alteration of the land within a drainage easement in this subdivision requires the prior written approval of the County Drainage Board.

Q-37

