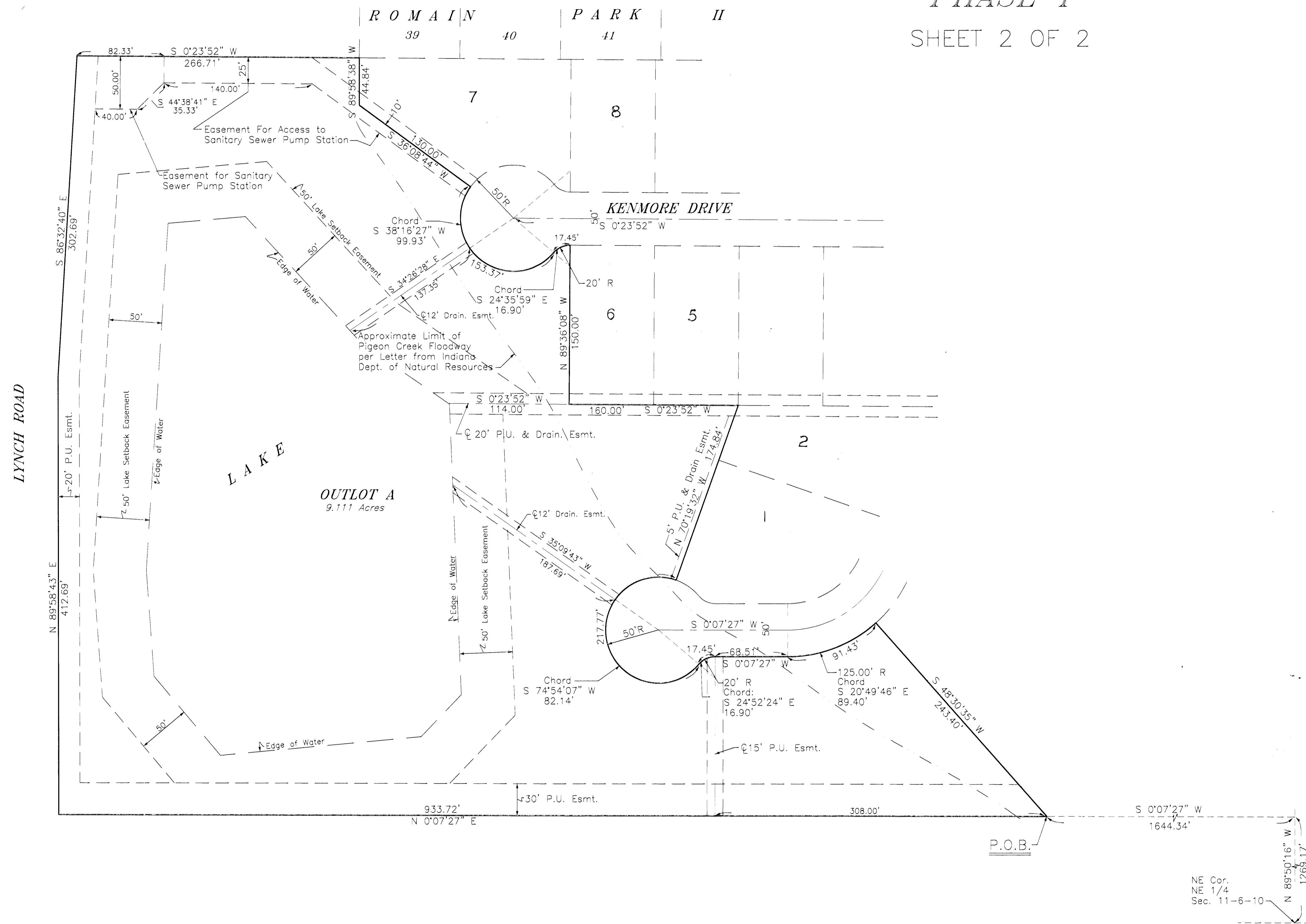
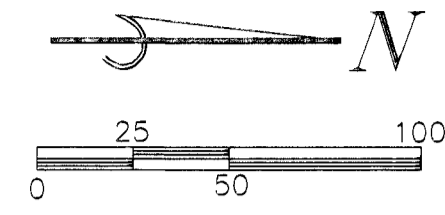


A S H W O O D

PHASE I
SHEET 2 OF 2



LEGAL DESCRIPTION

Part of the Northeast Quarter of Section 11, Township 6 South, Range 10 West lying in Center Township, Vanderburgh County, Indiana described as follows:

Beginning at a point located by commencing at the Northeast corner of said Quarter Section thence North 89 degrees 50 minutes 16 seconds West along the North line thereof a distance of 1269.17 feet, thence South 0 degrees 07 minutes 27 seconds West a distance of 1644.34 feet to the place of beginning, thence South 48 degrees 30 minutes 35 seconds West a distance of 243.40 feet to a point on a curve to the right having a radius of 125.00 feet, thence Southeasterly along said curve a distance of 91.43 feet (chord = 89.40 feet at a bearing of South 20 degrees 49 minutes 46 seconds East) to the end of said curve, thence South 0 degrees 07 minutes 27 seconds West a distance of 68.51 feet to the beginning of a curve to the left having a radius of 20.00 feet, thence Southeasterly along said curve a distance of 17.45 feet (chord = 16.90 feet at a bearing of South 24 degrees 52 minutes 24 seconds East) to the end of said curve and the beginning of a curve to the right having a radius of 50.00 feet, thence Southwesterly along said curve a distance of 217.77 feet (chord = 82.14 feet at a bearing of South 74 degrees 54 minutes 07 seconds West), thence North 70 degrees 19 minutes 32 seconds West a distance of 174.84 feet, thence South 0 degrees 23 minutes 52 seconds West a distance of 160.00 feet, thence North 89 degrees 36 minutes 08 seconds West a distance of 150.00 feet to a point on a curve to the left having a radius of 20.00 feet, thence Southeasterly along said curve a distance of 17.45 feet (chord = 16.90 feet at a bearing of South 24 degrees 52 minutes 24 seconds East) to the end of said curve and the beginning of a curve to the right having a radius of 50.00 feet, thence Southwesterly along said curve a distance of 153.37 feet (chord = 99.93 feet at a bearing of South 38 degrees 16 minutes 27 seconds West), thence North 89 degrees 36 minutes 08 seconds West a distance of 150.00 feet, thence South 0 degrees 23 minutes 52 seconds West along the extended East line of said Romain Park II a distance of 266.71 feet to a point on the North line of the Lynch Road right of way, thence South 86 degrees 32 minutes 40 seconds East along said right of way a distance of 302.69 feet, thence North 89 degrees 58 minutes 43 seconds East along said right of way a distance of 412.69 feet, thence North 0 degrees 07 minutes 27 seconds East a distance of 933.72 feet to the place of beginning and containing 9.111 acres more or less.

Q-17



NE Cor.
NE 1/4
Sec. 11-6-10
N 89°50'16" W
1269.17'

VCS

JOB NO. 7-97-12