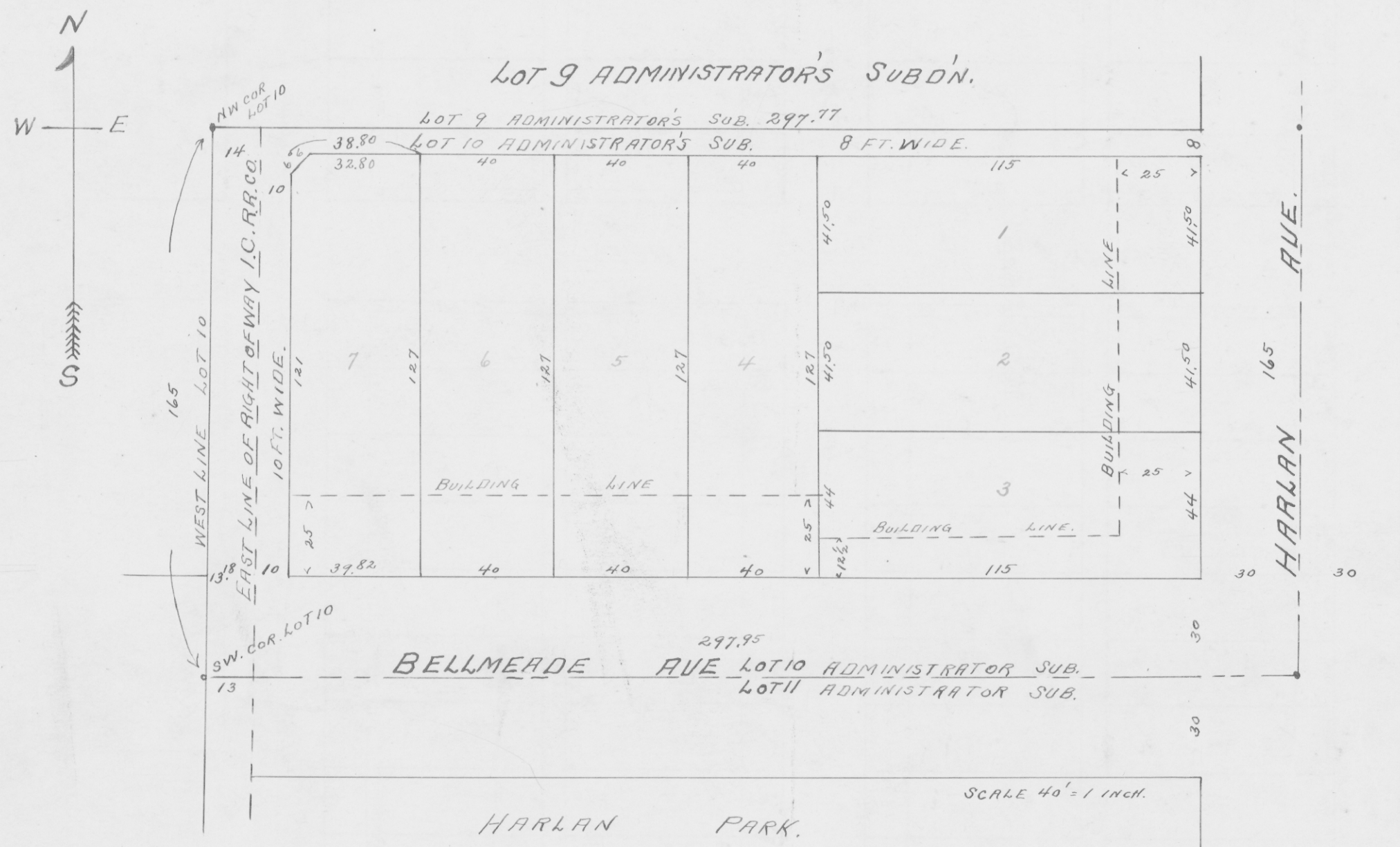


#4898

PLAT OF SUBDIVISION OF PART OF LOT 10 OF ADMINISTRATORS SUBDIVISION OF BLOCKS 2-7 SOUTH HALF 9-10-11-14-15<sup>TH</sup> AND WEST HALF 16 SHANKLINS SUBDIVISION OF THE SOUTHWEST QUARTER OF SECTION 28 TOWNSHIP 6 SOUTH RANGE 10 WEST.

As laid out by the School City of Evansville proprietor thereof  
Numbers of lots and sizes thereof  
Widths of Streets and alleys areas shown on plat below  
All lots in this Subdivision are classified under the zone ordinance in the  
"A" Residence use district  
"A" Height and Area district

By M. S. Spears  
Business Manager  
Board of Education  
School City of Evansville,  
Indiana.



Scale 40' per inch  
Saunders  
Civil Engineers and Surveyor  
Evansville, Ind. 1927.

State of Indiana, Vanderburgh County S.S.

Before the undersigned a notary public in and for said county and state personally appeared the within named School City of Evansville by Max S. Spears business Manager board of Education and acknowledged the execution of this plat.

Witness my hand and notarial seal this 15<sup>th</sup> day of September 1927.

Adolph F. Decker, Notary Public. (SEAL)

My commission expires Nov. 3-1928.

APPROVED BY  
CITY PLAN COMMISSION  
Aug. 3, 1927.  
H. M. Dickman, Secy. Pres.

APPROVED  
SEP. 21, 1927  
Board of Public Works  
Evansville, Ind.  
William T. Karges  
Jos. Healey  
W. S. Baertich

(SEAL)  
Miles S. Saunders  
REGISTERED  
No. 360  
State of Indiana  
Professional Engineer.

Alvin P. Gerhart R.V.C.

RECORDED.....OCTOBER.....5, 1927.