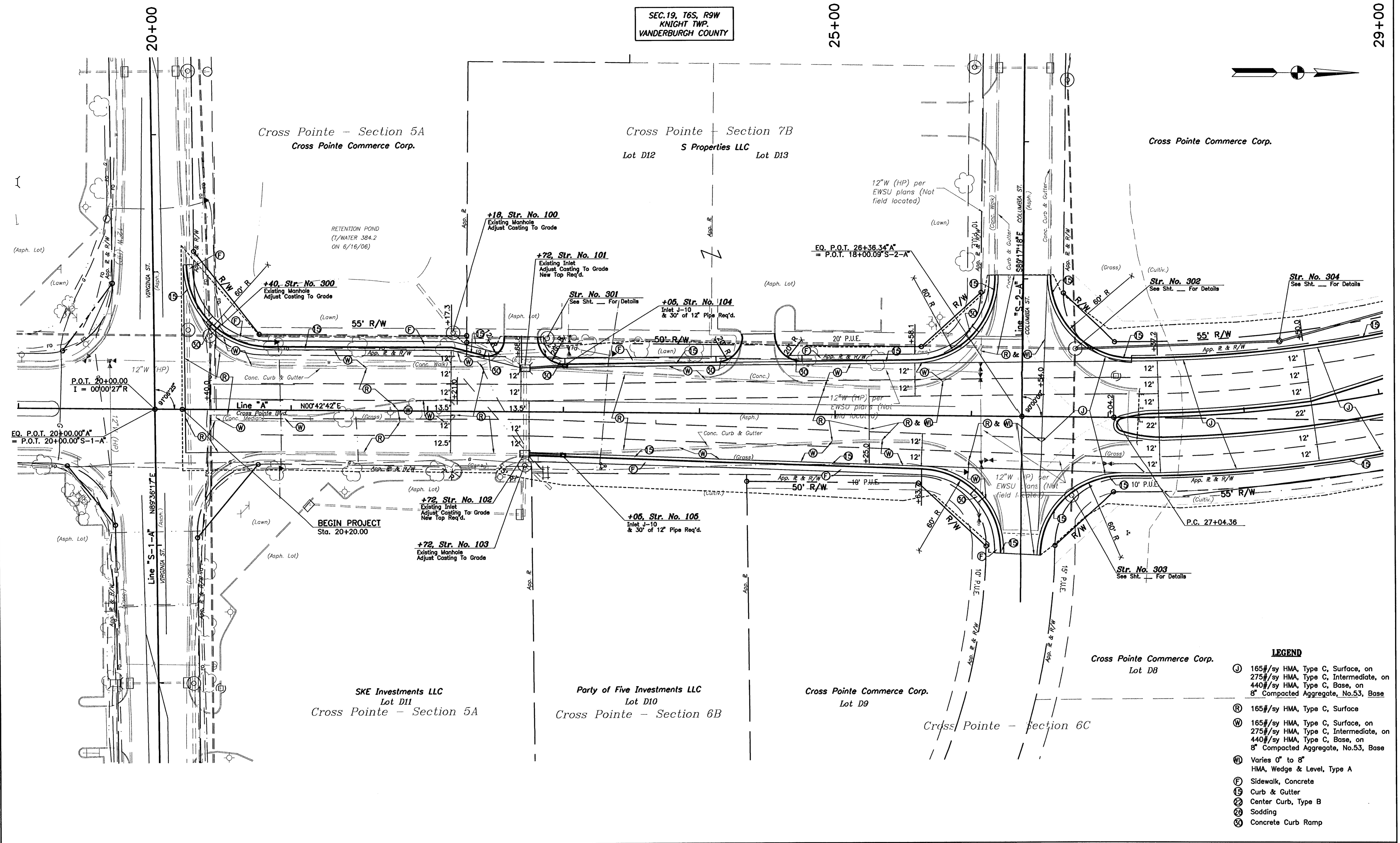
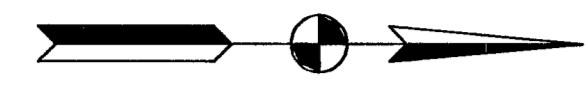


SEC. 19, T6S, R9W
KNIGHT TWP.
VANDERBURGH COUNTY

25+00

29+00



Cross Pointe - Section 5A
Cross Pointe Commerce Corp.

Cross Pointe - Section 7B
S Properties LLC
Lot D12 Lot D13

Cross Pointe Commerce Corp.

SKE Investments LLC
Lot D11
Cross Pointe - Section 5A

Party of Five Investments LLC
Lot D10
Cross Pointe - Section 6B

Cross Pointe Commerce Corp.
Lot D9

Cross Pointe - Section 6C

Cross Pointe Commerce Corp.
Lot D8

- LEGEND**
- ① 165#/sy HMA, Type C, Surface, on 275#/sy HMA, Type C, Intermediate, on 440#/sy HMA, Type C, Base, on 8" Compacted Aggregate, No.53, Base
 - ② 165#/sy HMA, Type C, Surface
 - ③ 165#/sy HMA, Type C, Surface, on 275#/sy HMA, Type C, Intermediate, on 440#/sy HMA, Type C, Base, on 8" Compacted Aggregate, No.53, Base
 - ④ Varies 0' to 8" HMA, Wedge & Level, Type A
 - ⑤ Sidewalk, Concrete
 - ⑥ Curb & Gutter
 - ⑦ Center Curb, Type B
 - ⑧ Sodding
 - ⑨ Concrete Curb Ramp

S:\Projects\108-0126\Detail\Detail.dwg 05/11/07 13:19 enyng

| | | | | | |
|--------------------------|-----------------|-----------------|--|------|--|
| RECOMMENDED FOR APPROVAL | | DESIGN ENGINEER | | DATE | |
| DESIGNED: J.A.F. | DRAWN: D.A.S. | | | | |
| CHECKED: B.R.L. | CHECKED: J.A.F. | | | | |



**CROSS POINTE BOULEVARD EXTENSION
FROM VIRGINIA STREET TO S.R. 62 (MORGAN AVE.)
VANDERBURGH COUNTY, INDIANA**

**CONSTRUCTION DETAIL
STA. 19+00 TO STA. 29+00**

| | |
|---------------------------------|------------------------|
| HORIZONTAL SCALE 1"=30' | PROJECT VC-07-05-01 |
| VERTICAL SCALE 1"=30' | |
| BLA PROJECT NO. 108-0126-OLR | SHEET 28 |