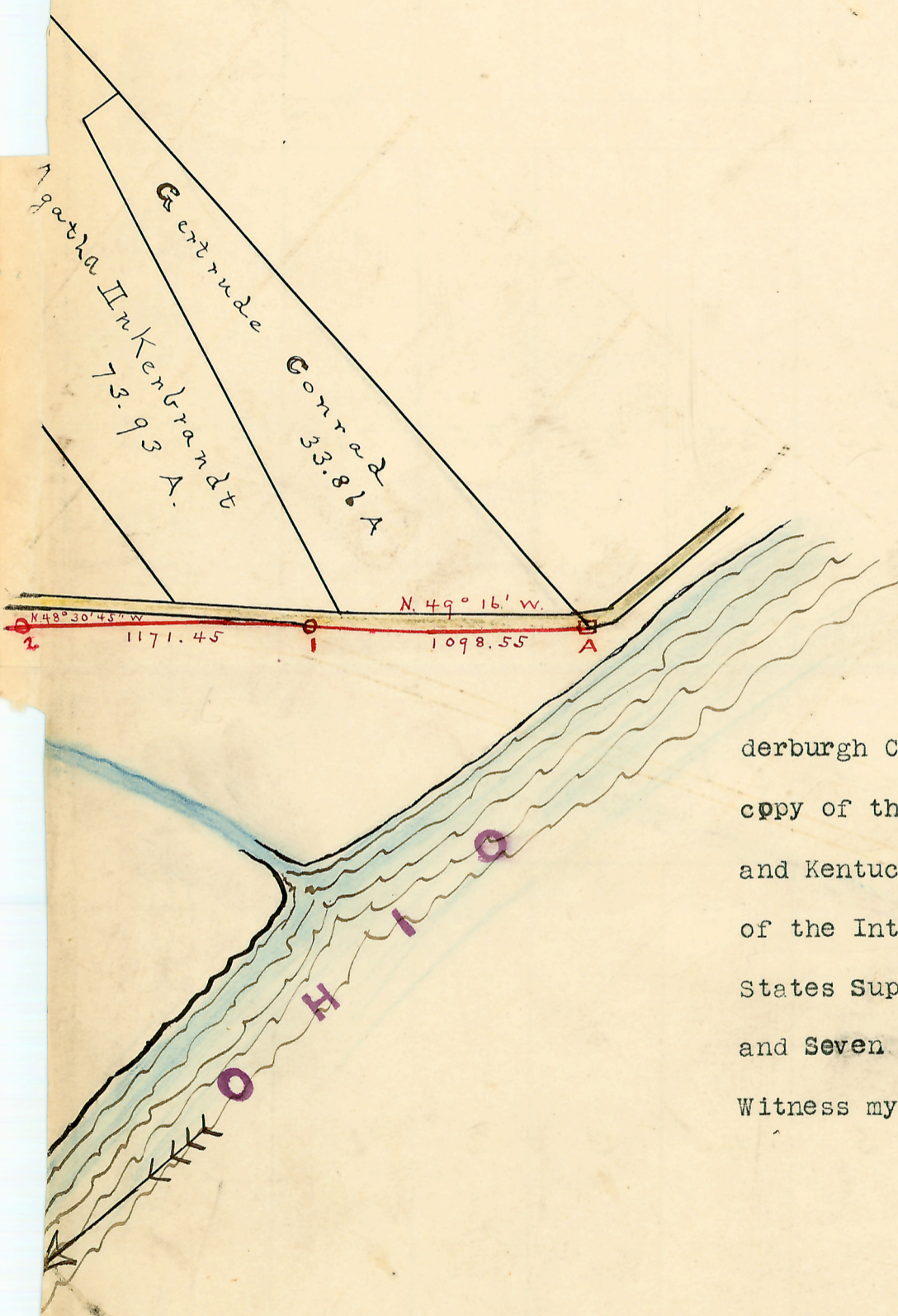


M A P O F T H E
 S T A T E B O U N D A R Y L I N E A T
 G R E E N R I V E R I S L A N D .

R E F E R E N C E S .

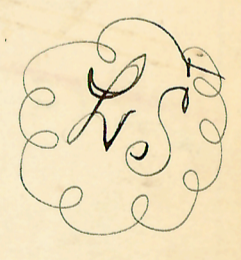
- Boundary Line bearings and distances marked in red.
- " " monuments marked A, B, and C are Lime Rock squared.
- " " " " 1-15 are cylindrical iron posts.
- Numbers of Sections in red.
- Land between road and State Boundary Line from 1 to 3, 5.75 A. is owned by the Inkerbrandt Heirs.



I, the undersigned C. C. Genung, County Surveyor of Vanderburgh County, State of Indiana, hereby certify that this map is a true copy of the original one made by me of the Boundary Line between Indiana and Kentucky, which line was run and located by myself in 1896, by direction of the Interstate Commissioners, accepted by them, and approved by the United States Supreme Court, and that the Subdivisions of the Sections in Towns Six and Seven South, Range No Ten (10) West, as shown, are from surveys made.

Witness my hand and Official seal this 29 day of May 1899.

C. C. Genung.
 Surveyor Vanderburgh County,
 State of Indiana.



Recorded----November----24th, 1900.