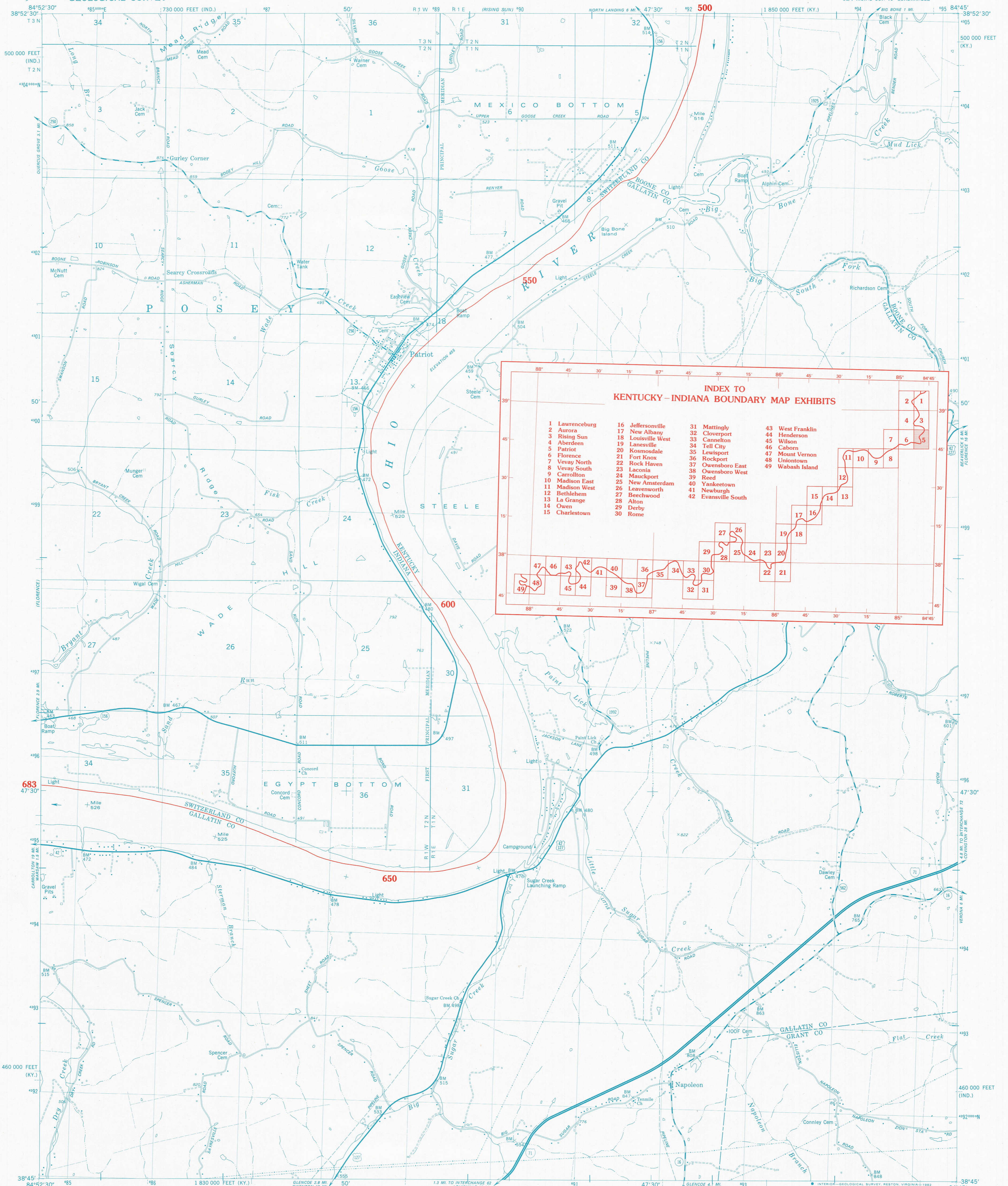


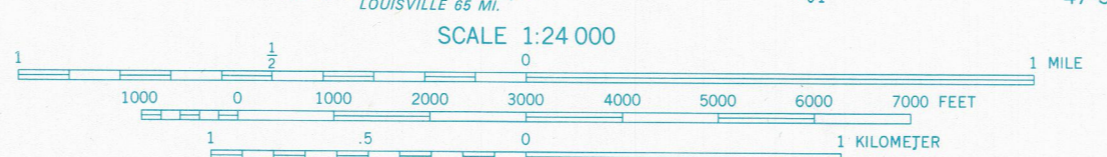
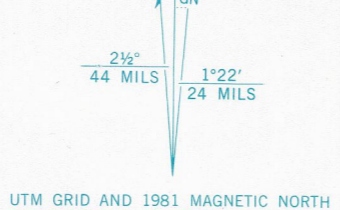
KENTUCKY-INDIANA BOUNDARY



**INDEX TO
KENTUCKY-INDIANA BOUNDARY MAP EXHIBITS**

1 Laurenceburg	16 Jeffersonville	31 Mattingly	43 West Franklin
2 Aurora	17 New Albany	32 Cloverport	44 Henderson
3 Rising Sun	18 Louisville West	33 Cannelton	45 Wilson
4 Aberdeen	19 Lanesville	34 Tell City	46 Cabona
5 Patriot	20 Kosmosdale	35 Lewisport	47 Mount Vernon
6 Florence	21 Fort Knox	36 Rockport	48 Uniontown
7 Vevay North	22 Rock Haven	37 Owensboro East	49 Wabash Island
8 Vevay South	23 Laconia	38 Owensboro West	
9 Carrollton	24 Mauckport	39 Reed	
10 Madison East	25 New Amsterdam	40 Yankeetown	
11 Madison West	26 Leavenworth	41 Newburgh	
12 Bethlehem	27 Beechwood	42 Evansville South	
13 La Grange	28 Alton		
14 Owen	29 Derby		
15 Charlestown	30 Rome		

Mapped, edited, and published by the Geological Survey
Revised in cooperation with Indiana Department of
Natural Resources
Control by USGS, NOS/NOAA, USCE, and Kentucky Department
of Highways
Topography in Kentucky by photogrammetric methods from aerial
photographs taken 1949. Field checked 1951. Topography in
Indiana by plane-table surveys 1940. Revised from aerial
photographs taken 1977. Field checked 1978. Map edited 1981
Polyconic projection. 10,000-foot grid ticks based on Kentucky
coordinate system, north zone, and Indiana coordinate
system, east zone
1000-meter Universal Transverse Mercator grid zone 16
1927 North American Datum



1927 NORTH AMERICAN DATUM
**KENTUCKY-INDIANA BOUNDARY COORDINATES DEFINING
THE BOUNDARY ON THIS MAP ARE: NUMBERS 500 THROUGH 683**
**THE COMPLETE LISTINGS OF THE KENTUCKY-INDIANA BOUNDARY
COORDINATES ARE CONTAINED IN EXHIBIT NO. 50**
**COORDINATE NUMBERS SHOWN WITHIN THIS MAP INDICATE
APPROXIMATE LOCATIONS AND ARE INTENDED AS REFERENCE ONLY**



ROAD CLASSIFICATION
Primary highway, hard surface ——— Light-duty road, hard or improved surface
Secondary highway, hard surface ——— Unimproved road
Interstate Route ——— U. S. Route ——— State Route

PATRIOT, IND.-KY.
SECTION 4 RISING SUN 19 QUADRANGLE
N3845-W8445/7.5

1981
**KENTUCKY v. INDIANA No. 81, Orig.
JOINT EXHIBIT NO. 5**

**THE OHIO RIVER BOUNDARY WAS DETERMINED
IN KENTUCKY V. INDIANA, NO. 81, ORIGINAL,
474 U. S. THE FINAL DECREE WAS
ENTERED ON NOVEMBER 4, 1985.**