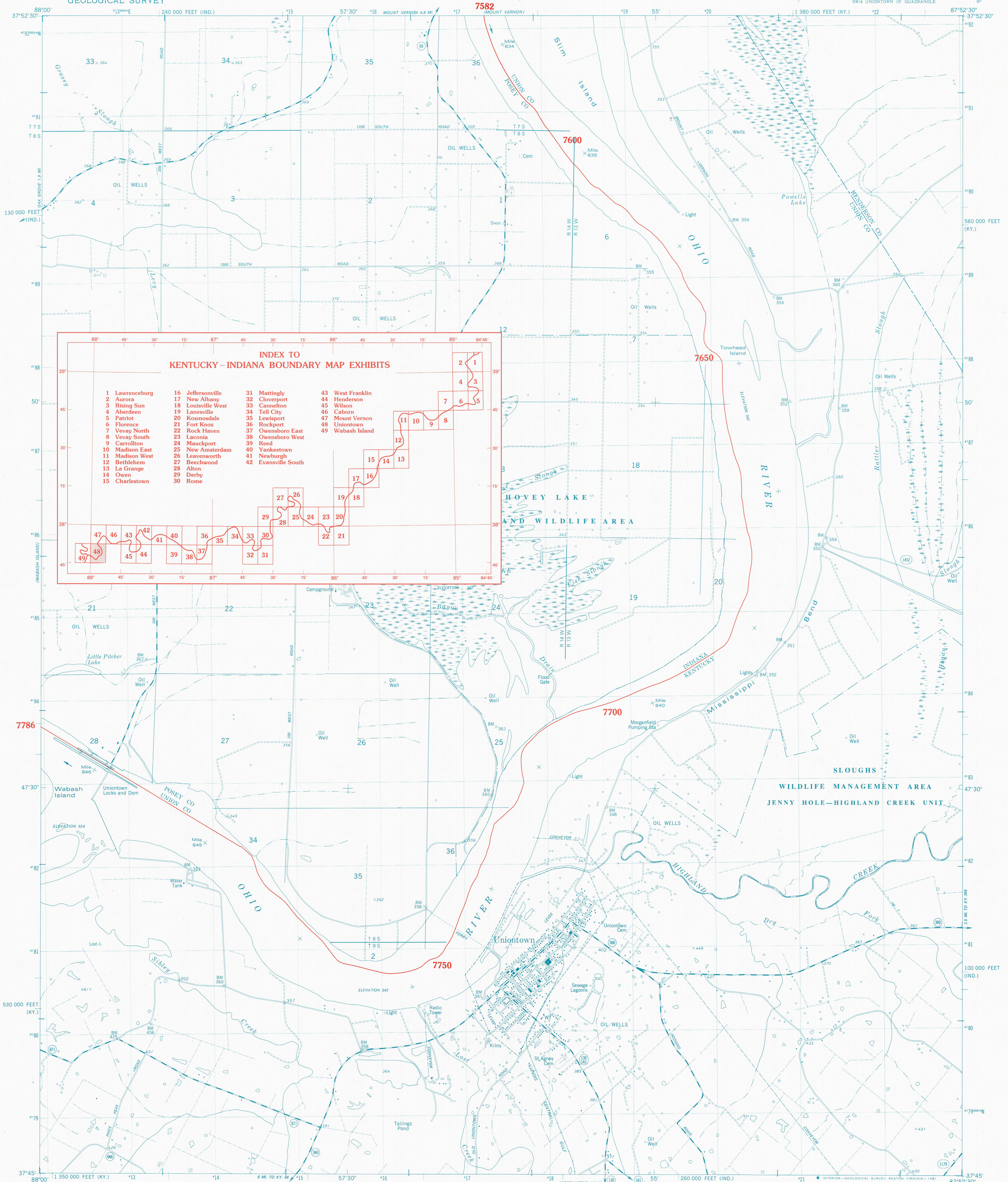


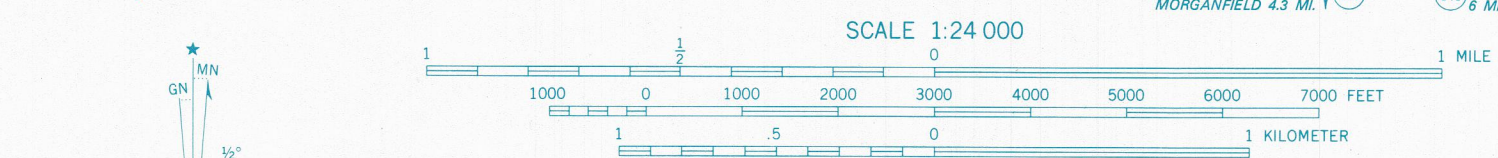
KENTUCKY-INDIANA BOUNDARY



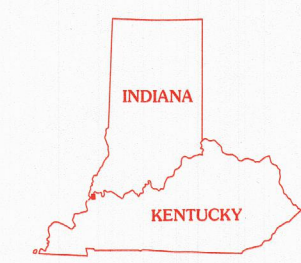
**INDEX TO
KENTUCKY-INDIANA BOUNDARY MAP EXHIBITS**

1 Lawrenceburg	16 Jeffersonville	31 Mattingly	43 West Franklin
2 Aurora	17 New Albany	32 Cloverport	44 Henderson
3 Rising Sun	18 Louisville West	33 Cannelton	45 Wilson
4 Aberdeen	19 Lanesville	34 Tell City	46 Caborn
5 Patriot	20 Kosmosdale	35 Lewisport	47 Mount Vernon
6 Florence	21 Fort Knox	36 Rockport	48 Uniontown
7 Vevey North	22 Rock Haven	37 Owensboro East	49 Wabash Island
8 Vevey South	23 Laconia	38 Owensboro West	
9 Carrollton	24 Mauckport	39 Reed	
10 Madison East	25 New Amsterdam	40 Yanketown	
11 Madison West	26 Leavenworth	41 Newburgh	
12 Bethlehem	27 Beechwood	42 Evansville South	
13 La Grange	28 Alton		
14 Owen	29 Derby		
15 Charlestown	30 Rome		

Mapped, edited, and published by the Geological Survey in cooperation with Kentucky Geological Survey and Indiana Department of Natural Resources
Control by USGS, NOS/NOAA, and USCE
Culture and drainage, in Kentucky, in part compiled from aerial photographs taken 1950
Topography by planetable surveys 1952. Culture and drainage, in Indiana, from controlled photostatic from aerial photographs taken 1956. Topography by planetable surveys 1956
Revised from aerial photographs taken 1974 and 1977. Field checked 1976. Map edited 1981
Polyconic projection. 10,000-foot grid ticks based on Kentucky coordinate system, south zone, and Indiana coordinate system, west zone
1000-meter Universal Transverse Mercator grid, zone 16. 1927 North American Datum



1927 NORTH AMERICAN DATUM
KENTUCKY-INDIANA BOUNDARY COORDINATES DEFINING THE BOUNDARY ON THIS MAP ARE: NUMBERS 7582 THROUGH 7786
THE COMPLETE LISTINGS OF THE KENTUCKY-INDIANA BOUNDARY COORDINATES ARE CONTAINED IN EXHIBIT NO. 50
COORDINATE NUMBERS SHOWN WITHIN THIS MAP INDICATE APPROXIMATE LOCATIONS AND ARE INTENDED AS REFERENCE ONLY



ROAD CLASSIFICATION

Primary highway, hard surface	Light-duty road, hard or improved surface
Secondary highway, hard surface	Unimproved road
Interstate Route	U.S. Route
	State Route

UNIONTOWN, KY.-IND.
SW/4 UNIONTOWN 15' QUADRANGLE
N3745-W8752.5/7.5

1981

THE OHIO RIVER BOUNDARY WAS DETERMINED IN KENTUCKY V. INDIANA, NO. 81, ORIGINAL, 474 U.S. THE FINAL DECREE WAS ENTERED ON NOVEMBER 4, 1985.

KENTUCKY v. INDIANA No. 81, Orig. JOINT EXHIBIT NO. 48