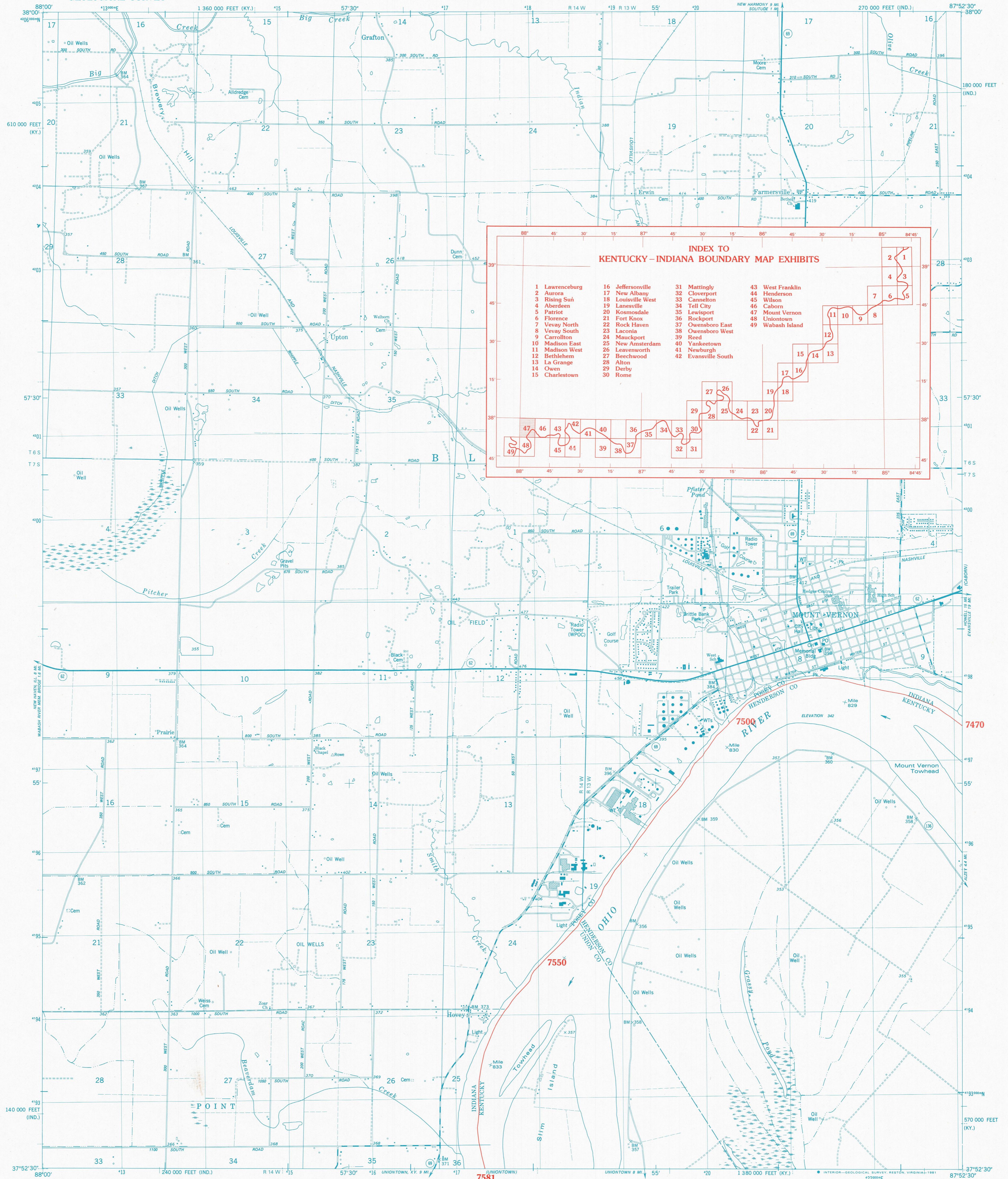


KENTUCKY-INDIANA BOUNDARY

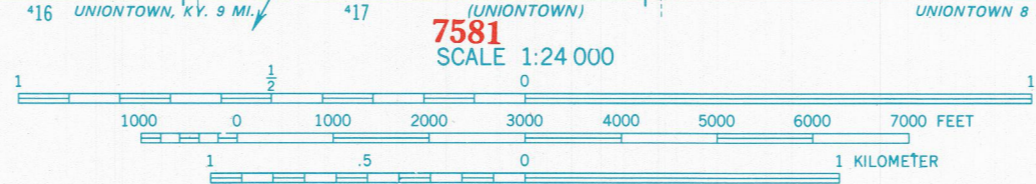


INDEX TO KENTUCKY-INDIANA BOUNDARY MAP EXHIBITS

1 Lawrenceburg	16 Jeffersonville	31 Mattingly	43 West Franklin
2 Aurora	17 New Albany	32 Cloverport	44 Henderson
3 Rising Sun	18 Louisville West	33 Cannelton	45 Wilson
4 Aberdeen	19 Lanesville	34 Tell City	46 Caborn
5 Patriot	20 Kosmosdale	35 Lewisport	47 Mount Vernon
6 Florence	21 Fort Knox	36 Rockport	48 Uniontown
7 Vevey North	22 Rock Haven	37 Owensboro East	49 Wabash Island
8 Vevey South	23 Rock Haven	38 Owensboro West	
9 Carrollton	24 Laconia	39 Reed	
10 Madison East	25 Mauckport	40 Yanketown	
11 Madison West	26 New Amsterdam	41 Newburgh	
12 Bethlehem	27 Leavenworth	42 Evansville South	
13 La Grange	28 Beechwood		
14 Owen	29 Alton		
15 Charlestown	30 Derby		

Mapped, edited, and published by the Geological Survey in cooperation with Indiana Department of Natural Resources and Kentucky Geological Survey
Control by USGS and NOS/NOAA
Culture and drainage in part compiled from aerial photographs taken 1950 (Kentucky) and 1956 (Indiana). Indiana topography by photogrammetric methods and planetable surveys 1957. Kentucky topography by planetable surveys 1952. Revised from aerial photographs taken 1973 and 1974. Field checked 1976. Map edited 1981
Polyconic projection. 10,000-foot grid ticks based on Indiana coordinate system, west zone, and Kentucky coordinate system, south zone. 1000-meter Universal Transverse Mercator grid, zone 16. 1927 North American Datum

UTM GRID AND 1981 MAGNETIC NORTH DECLINATION AT CENTER OF SHEET



1927 NORTH AMERICAN DATUM
KENTUCKY-INDIANA BOUNDARY COORDINATES DEFINING THE BOUNDARY ON THIS MAP ARE: NUMBERS 7470 THROUGH 7581
THE COMPLETE LISTINGS OF THE KENTUCKY-INDIANA BOUNDARY COORDINATES ARE CONTAINED IN EXHIBIT NO. 50
COORDINATE NUMBERS SHOWN WITHIN THIS MAP INDICATE APPROXIMATE LOCATIONS AND ARE INTENDED AS REFERENCE ONLY



ROAD CLASSIFICATION
Primary highway, hard surface — Light-duty road, hard or improved surface
Secondary highway, hard surface — Unimproved road
Interstate Route — U.S. Route — State Route

MOUNT VERNON, IND.-KY.
NW 1/4 UNIONTOWN 15' QUADRANGLE
N3752.5-W8752.5/7.5

1981

THE OHIO RIVER BOUNDARY WAS DETERMINED IN KENTUCKY V. INDIANA, NO. 81, ORIGINAL, 474 U.S. THE FINAL DECREE WAS ENTERED ON NOVEMBER 4, 1985.

KENTUCKY v. INDIANA No. 81, Orig. JOINT EXHIBIT NO. 47