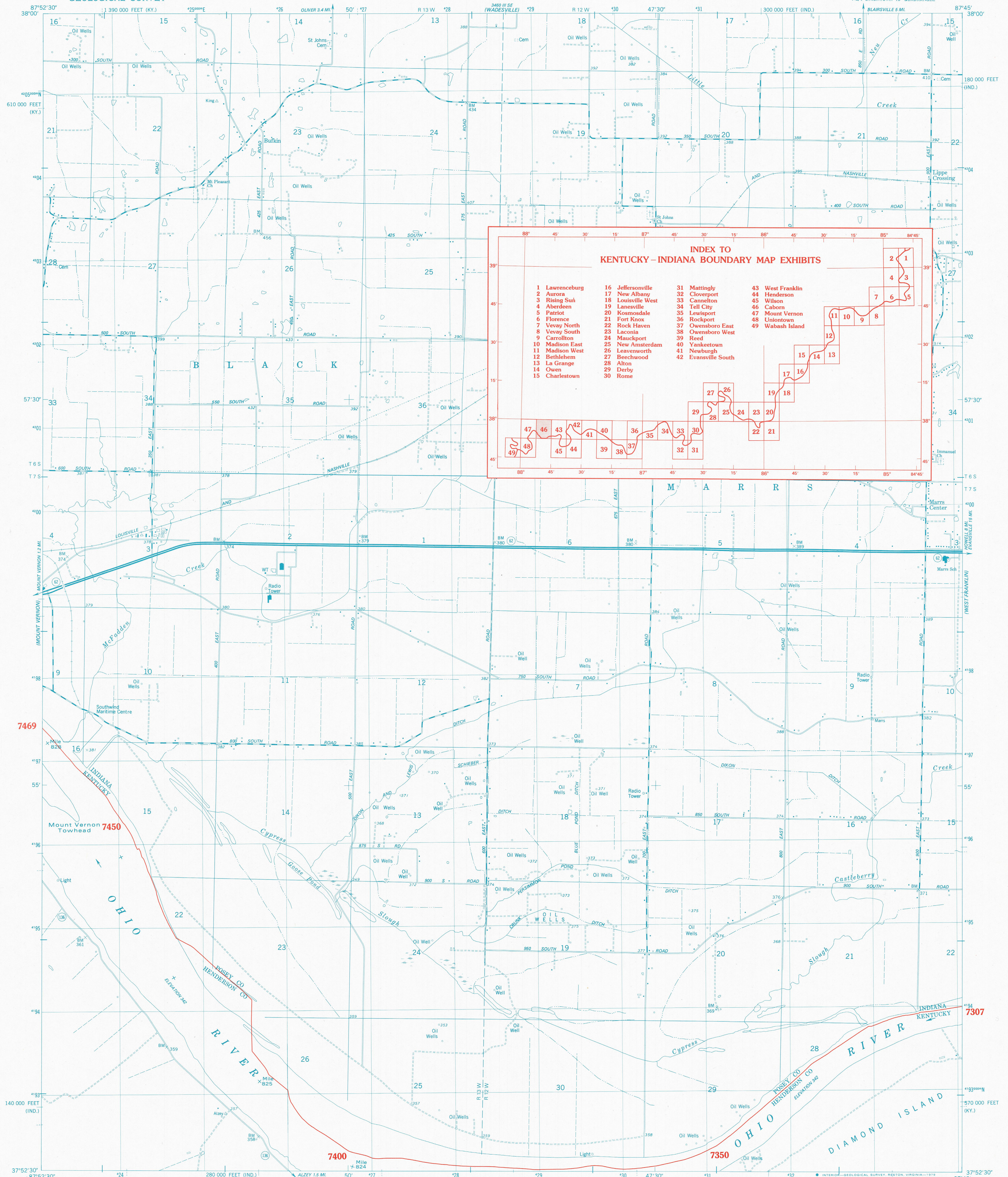


# KENTUCKY-INDIANA BOUNDARY



**INDEX TO KENTUCKY-INDIANA BOUNDARY MAP EXHIBITS**

1 Lawrenceburg	16 Jeffersonville	31 Mattingly	43 West Franklin
2 Aurora	17 New Albany	32 Cloverport	44 Henderson
3 Rising Sun	18 Louisville West	33 Cannelton	45 Wilson
4 Aberdeen	19 Lanesville	34 Tell City	46 Caborn
5 Patriot	20 Kosmosdale	35 Lewisport	47 Mount Vernon
6 Florence	21 Fort Knox	36 Rockport	48 Uniontown
7 Vevay North	22 Rock Haven	37 Owensboro East	49 Wabash Island
8 Vevay South	23 Laconia	38 Owensboro West	
9 Carrollton	24 Mauckport	39 Reed	
10 Madison East	25 New Amsterdam	40 Yaukeetown	
11 Madison West	26 Leavenworth	41 Newburgh	
12 Bethlehem	27 Beechwood	42 Evansville South	
13 La Grange	28 Alton		
14 Owen	29 Derby		
15 Charlestown	30 Rome		

Mapped, edited, and published by the Geological Survey in cooperation with Indiana Department of Natural Resources and Kentucky Geological Survey. Control by USGS, NOS/NOAA, and USCE. Planimetry by photogrammetric methods from aerial photographs taken 1950 and 1956. Topography in Indiana by photogrammetric methods and by planetable surveys 1957. Topography in Kentucky by planetable surveys 1952. Revised from aerial photographs taken 1973 and 1974. Field checked 1975. Map edited 1978.

Polycomic projection. 1927 North American datum, 10,000-foot grid ticks based on Indiana coordinate system, west zone, and Kentucky coordinate system, south zone 1000-meter Universal Transverse Mercator grid, zone 16.

**THE OHIO RIVER BOUNDARY WAS DETERMINED IN KENTUCKY V. INDIANA, NO. 81, ORIGINAL, 474 U.S. THE FINAL DECREE WAS ENTERED ON NOVEMBER 4, 1985.**

SCALE 1:24,000

1927 NORTH AMERICAN DATUM

KENTUCKY-INDIANA BOUNDARY COORDINATES DEFINING THE BOUNDARY ON THIS MAP ARE: NUMBERS 7307 THROUGH 7469. THE COMPLETE LISTINGS OF THE KENTUCKY-INDIANA BOUNDARY COORDINATES ARE CONTAINED IN EXHIBIT NO. 50. COORDINATE NUMBERS SHOWN WITHIN THIS MAP INDICATE APPROXIMATE LOCATIONS AND ARE INTENDED AS REFERENCE ONLY.

ROAD CLASSIFICATION:  
 Primary highway, hard surface  
 Secondary highway, hard surface  
 Light-duty road, hard or improved surface  
 Unimproved road  
 Interstate Route  
 U.S. Route  
 State Route

CABORN, IND.-KY.  
 NE/4 UNIONTOWN 15' QUADRANGLE  
 N3752.5-W8745/7.5  
 1978

**KENTUCKY v. INDIANA No. 81, Orig. JOINT EXHIBIT NO. 46**