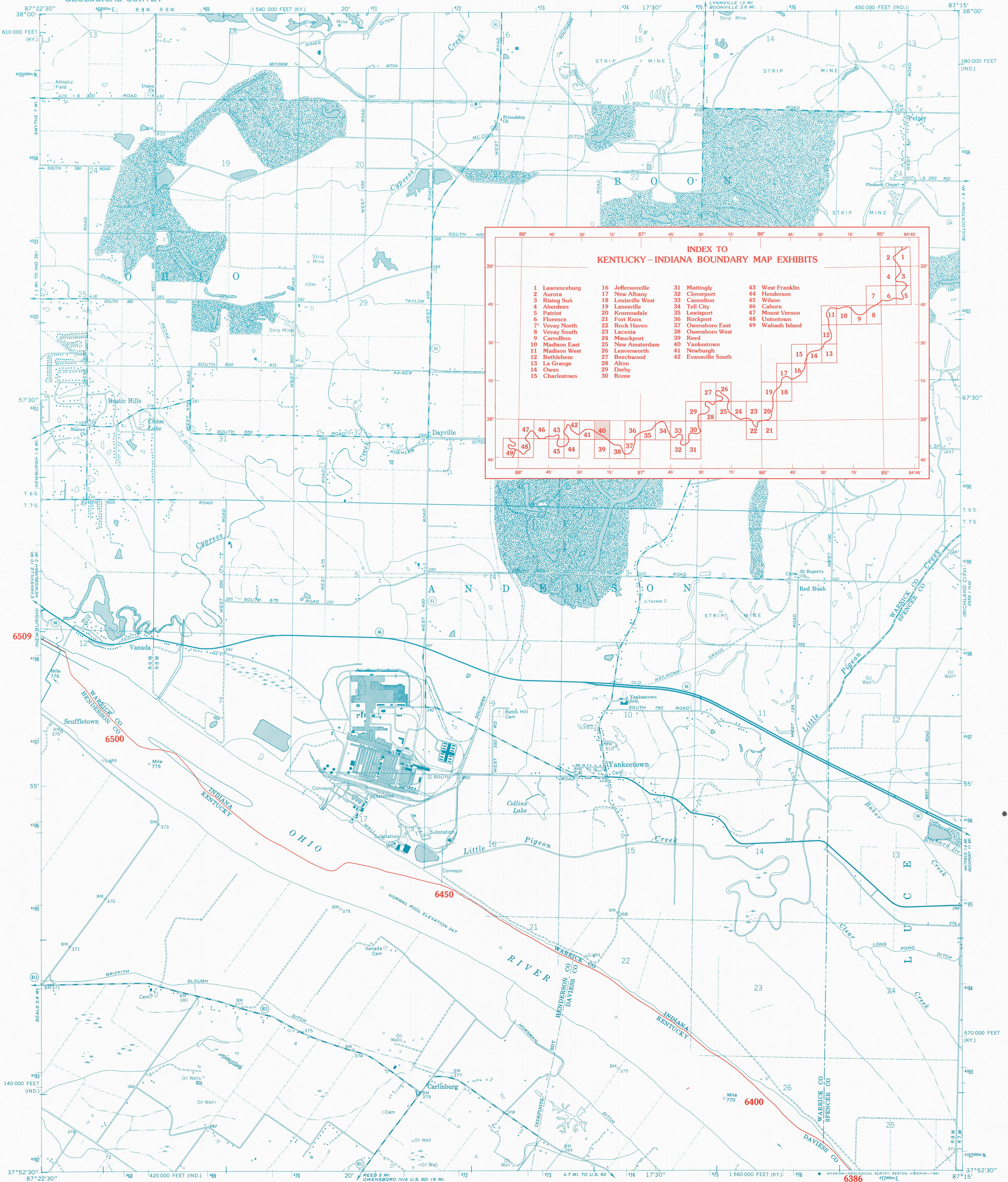


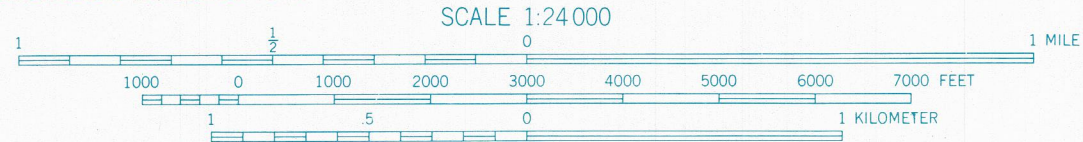
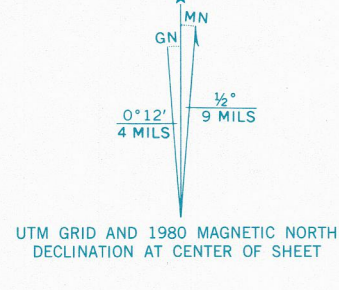
# KENTUCKY-INDIANA BOUNDARY



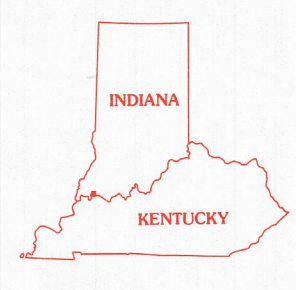
**INDEX TO  
KENTUCKY-INDIANA BOUNDARY MAP EXHIBITS**

1 Lawrenceburg	16 Jeffersonville	31 Mattingly	43 West Franklin
2 Aurora	17 New Albany	32 Cloverport	44 Henderson
3 Rising Sun	18 Louisville West	33 Cannelton	45 Wilson
4 Aberdeen	19 Lanesville	34 Tell City	46 Caborn
5 Patriot	20 Kosmosdale	35 Lewisport	47 Mount Vernon
6 Florence	21 Fort Knox	36 Rockport	48 Uniontown
7 Vevay North	22 Rock Haven	37 Owensboro East	49 Wabash Island
8 Vevay South	23 Laconia	38 Owensboro West	
9 Carrollton	24 Mauckport	39 Reed	
10 Madison East	25 New Amsterdam	40 Yankeetown	
11 Madison West	26 Leavenworth	41 Newburgh	
12 Bethlehem	27 Beechwood	42 Evansville South	
13 La Grange	28 Alton		
14 Owen	29 Derby		
15 Charlestown	30 Rome		

Mapped, edited, and published by the Geological Survey in cooperation with Kentucky Geological Survey Revised in cooperation with Indiana Department of Natural Resources  
Control by USGS, NOS/NOAA, and USCE  
Planimetry by photogrammetric methods from aerial photographs taken 1950. Topography by planetable surveys 1951. Revised 1964  
Polyconic projection  
10,000-foot grids based on Indiana coordinate system, west zone, and Kentucky coordinate system, south zone 1000-meter Universal Transverse Mercator grid ticks, zone 16, shown in blue. 1927 North American Datum



**1927 NORTH AMERICAN DATUM**  
KENTUCKY-INDIANA BOUNDARY COORDINATES DEFINING THE BOUNDARY ON THIS MAP ARE: NUMBERS 6386 THROUGH 6509  
THE COMPLETE LISTINGS OF THE KENTUCKY-INDIANA BOUNDARY COORDINATES ARE CONTAINED IN EXHIBIT NO. 50  
COORDINATE NUMBERS SHOWN WITHIN THIS MAP INDICATE APPROXIMATE LOCATIONS AND ARE INTENDED AS REFERENCE ONLY



**ROAD CLASSIFICATION**  
Heavy-duty ————— Light-duty —————  
Medium-duty ————— Unimproved dirt - - - - -  
○ State Route

**YANKEETOWN, IND.-KY.**  
NE 1/4 NEWBURGH 15' QUADRANGLE  
N3752.5-W8715/7.5

1964  
PHOTOREVISED 1980

**KENTUCKY v. INDIANA No. 81, Orig. JOINT EXHIBIT NO. 40**

THE OHIO RIVER BOUNDARY WAS DETERMINED IN KENTUCKY v. INDIANA, NO. 81, ORIGINAL, 474 U.S. THE FINAL DECREE WAS ENTERED ON NOVEMBER 4, 1985.