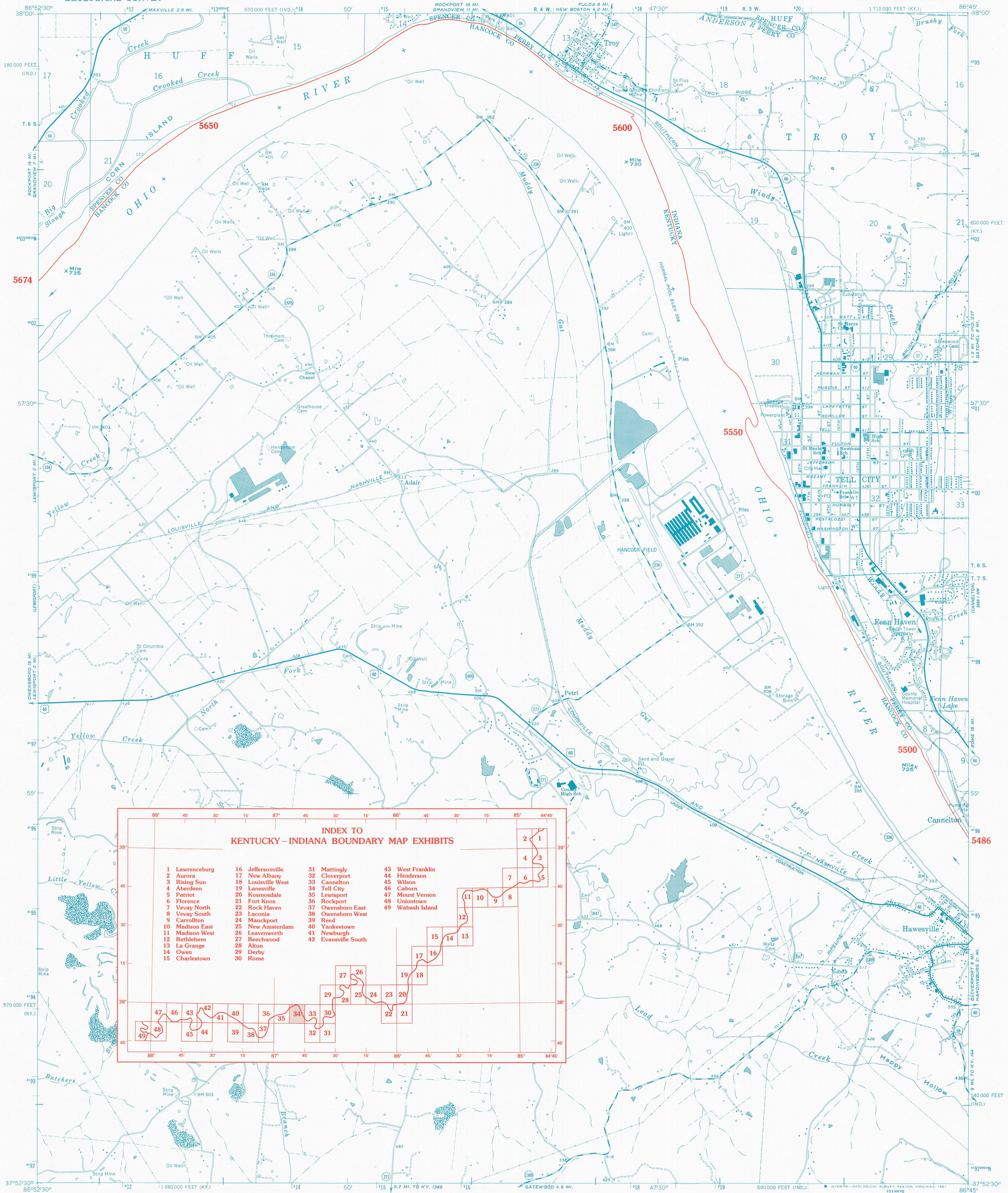


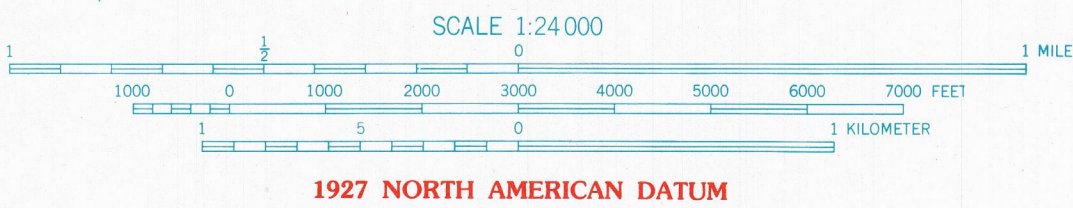
KENTUCKY-INDIANA BOUNDARY



**INDEX TO
KENTUCKY-INDIANA BOUNDARY MAP EXHIBITS**

1 Lawrenceburg	16 Jeffersonville	31 Mattingly	43 West Franklin
2 Aurora	17 New Albany	32 Cloverport	44 Henderson
3 Rising Sun	18 Louisville West	33 Cannelton	45 Wilson
4 Aberdeen	19 Lansville	34 Tell City	46 Caborn
5 Patriot	20 Kosmosdale	35 Leutsport	47 Mount Vernon
6 Florence	21 Fort Knox	36 Rockport	48 Untontown
7 Vevay North	22 Rock Haven	37 Owensboro East	49 Wabash Island
8 Vevay South	23 Laconia	38 Owensboro West	
9 Carrollton	24 Mauckport	39 Reed	
10 Madison East	25 New Amsterdam	40 Yanketown	
11 Madison West	26 Leavenworth	41 Newburgh	
12 Bethlehem	27 Beechwood	42 Evansville South	
13 La Grange	28 Alton		
14 Owen	29 Derby		
15 Charlestown	30 Rome		

Mapped, edited, and published by the Geological Survey in cooperation with State of Kentucky Geological Survey and State of Indiana Department of Conservation Control by USGS, USC&GS, and USCE
Topography in Kentucky by photogrammetric methods from aerial photographs taken 1951
Field checked 1953. Revised 1961. Topography in Indiana by photogrammetric methods from aerial photographs taken 1958. Field checked 1961
Polyconic Projection
10,000-foot grids based on Kentucky coordinate system, south zone and Indiana coordinate system, west zone
1000-meter Universal Transverse Mercator grid ticks, zone 16, shown in blue. 1927 North American Datum



ROAD CLASSIFICATION

Heavy-duty	Light-duty
Medium-duty	Unimproved dirt
U.S. Route	State Route

KENTUCKY-INDIANA BOUNDARY COORDINATES DEFINING THE BOUNDARY ON THIS MAP ARE: NUMBERS 5486 THROUGH 5674
THE COMPLETE LISTINGS OF THE KENTUCKY-INDIANA BOUNDARY COORDINATES ARE CONTAINED IN EXHIBIT NO. 50
COORDINATE NUMBERS SHOWN WITHIN THIS MAP INDICATE APPROXIMATE LOCATIONS AND ARE INTENDED AS REFERENCE ONLY

TELL CITY, IND.-KY.
NE 1/4 TELL CITY 15' QUADRANGLE
N3752.5-W8645/7.5
1961
PHOTOREVISED 1980

THE OHIO RIVER BOUNDARY WAS DETERMINED IN KENTUCKY V. INDIANA, NO. 81, ORIGINAL, 474 U.S. THE FINAL DECREE WAS ENTERED ON NOVEMBER 4, 1985.

KENTUCKY v. INDIANA No. 81, Orig. JOINT EXHIBIT NO. 34