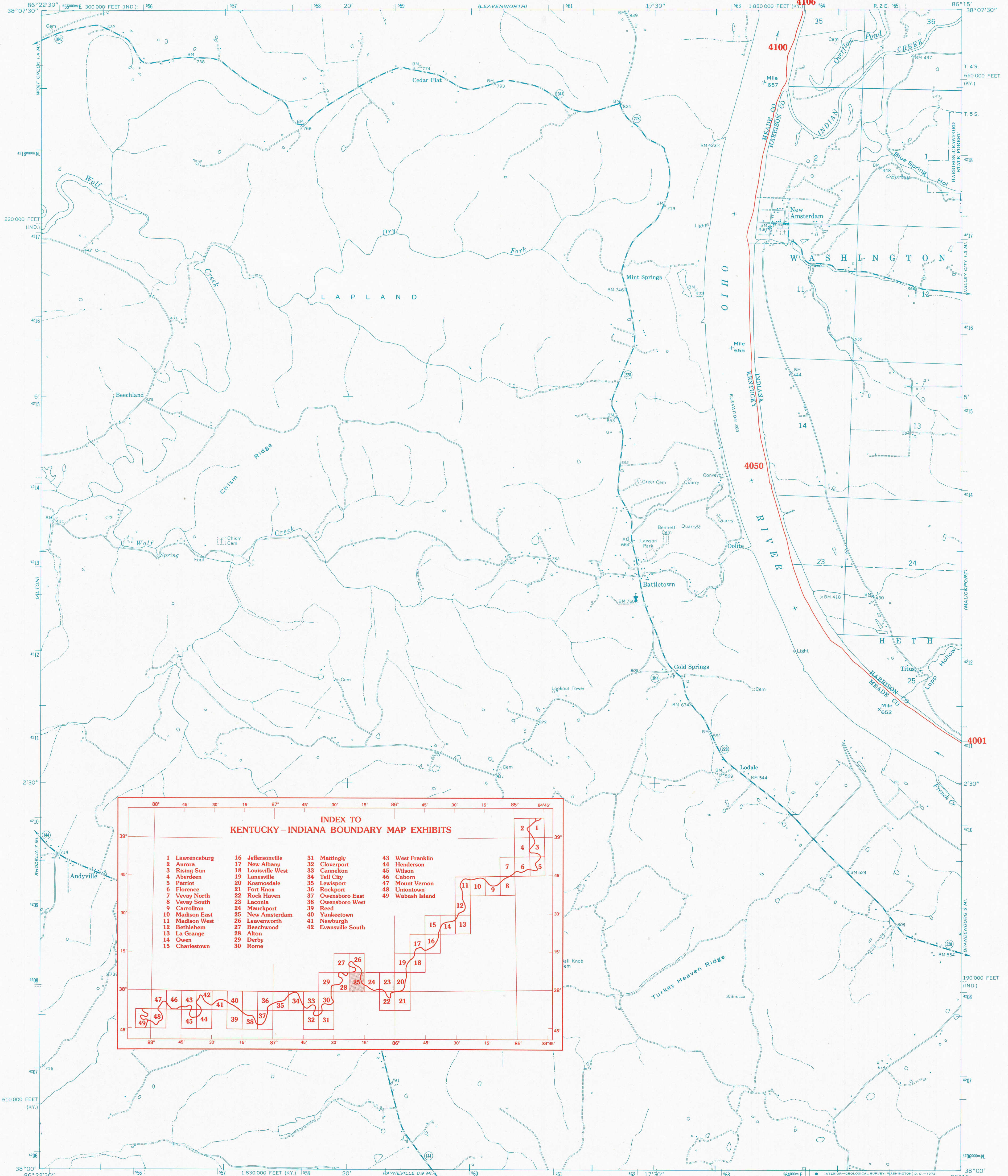


KENTUCKY-INDIANA BOUNDARY

UNITED STATES
DEPARTMENT OF THE INTERIOR
GEOLOGICAL SURVEY

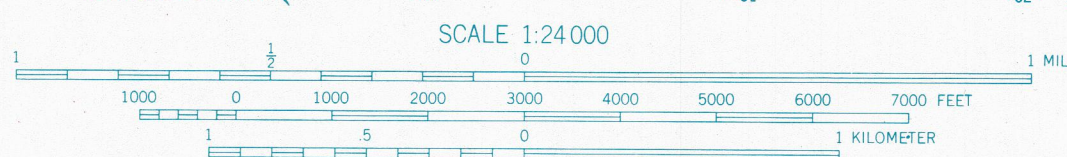
NEW AMSTERDAM QUADRANGLE
KENTUCKY-INDIANA
7.5 MINUTE SERIES (BOUNDARY)
SE 1/4 ALTON 15' QUADRANGLE
R. 2 E. 65



**INDEX TO
KENTUCKY-INDIANA BOUNDARY MAP EXHIBITS**

1 Lawrenceburg	16 Jeffersonville	31 Mattingly	43 West Franklin
2 Aurora	17 New Albany	32 Cloverport	44 Henderson
3 Rising Sun	18 Louisville West	33 Cannelton	45 Wilson
4 Aberdeen	19 Lanesville	34 Tell City	46 Caborn
5 Patriot	20 Kosmosdale	35 Lewisport	47 Mount Vernon
6 Florence	21 Fort Knox	36 Rockport	48 Uniontown
7 Vevay North	22 Rock Haven	37 Owensboro East	49 Wabash Island
8 Vevay South	23 Laconia	38 Owensboro West	
9 Carrollton	24 Mauckport	39 Reed	
10 Madison East	25 New Amsterdam	40 Yankeetown	
11 Madison West	26 Leavenworth	41 Newburgh	
12 Bethlehem	27 Beechwood	42 Evansville South	
13 La Grange	28 Alton		
14 Owen	29 Derby		
15 Charlestown	30 Rome		

Mapped by the Geological Survey and the Army Map Service
Edited and published by the Geological Survey in cooperation
with Indiana Department of Natural Resources
Revised in cooperation with Indiana Department of Natural Resources
Control by USGS, USC&GS, and USCE
Topography in Kentucky by photogrammetric methods from aerial photographs
taken 1947. Field checked 1950. Topography in Indiana by planetable
surveys 1945. Revised from aerial photographs taken 1969.
Field checked 1970.
Polyconic projection. 1927 North American datum
10,000-foot grids based on Kentucky coordinate system, south zone,
and Indiana coordinate system, east zone
1000-meter Universal Transverse Mercator grid ticks, zone 16, shown in blue



1927 NORTH AMERICAN DATUM
KENTUCKY-INDIANA BOUNDARY COORDINATES DEFINING
THE BOUNDARY ON THIS MAP ARE: NUMBERS 4001 THROUGH 4106
THE COMPLETE LISTINGS OF THE KENTUCKY-INDIANA BOUNDARY
COORDINATES ARE CONTAINED IN EXHIBIT NO. 50
COORDINATE NUMBERS SHOWN WITHIN THIS MAP INDICATE
APPROXIMATE LOCATIONS AND ARE INTENDED AS REFERENCE ONLY



ROAD CLASSIFICATION
Primary highway, hard surface ——— Light-duty road, hard or improved surface
Secondary highway, hard surface ——— Unimproved road
Interstate Route ——— U. S. Route ——— State Route

NEW AMSTERDAM, KY.-IND.
SE 1/4 ALTON 15' QUADRANGLE
N3800-W8615/7.5

1970
**KENTUCKY v. INDIANA No. 81, Orig.
JOINT EXHIBIT NO. 25**

**THE OHIO RIVER BOUNDARY WAS DETERMINED
IN KENTUCKY V. INDIANA, NO. 81, ORIGINAL,
474 U. S. THE FINAL DECREE WAS
ENTERED ON NOVEMBER 4, 1985.**