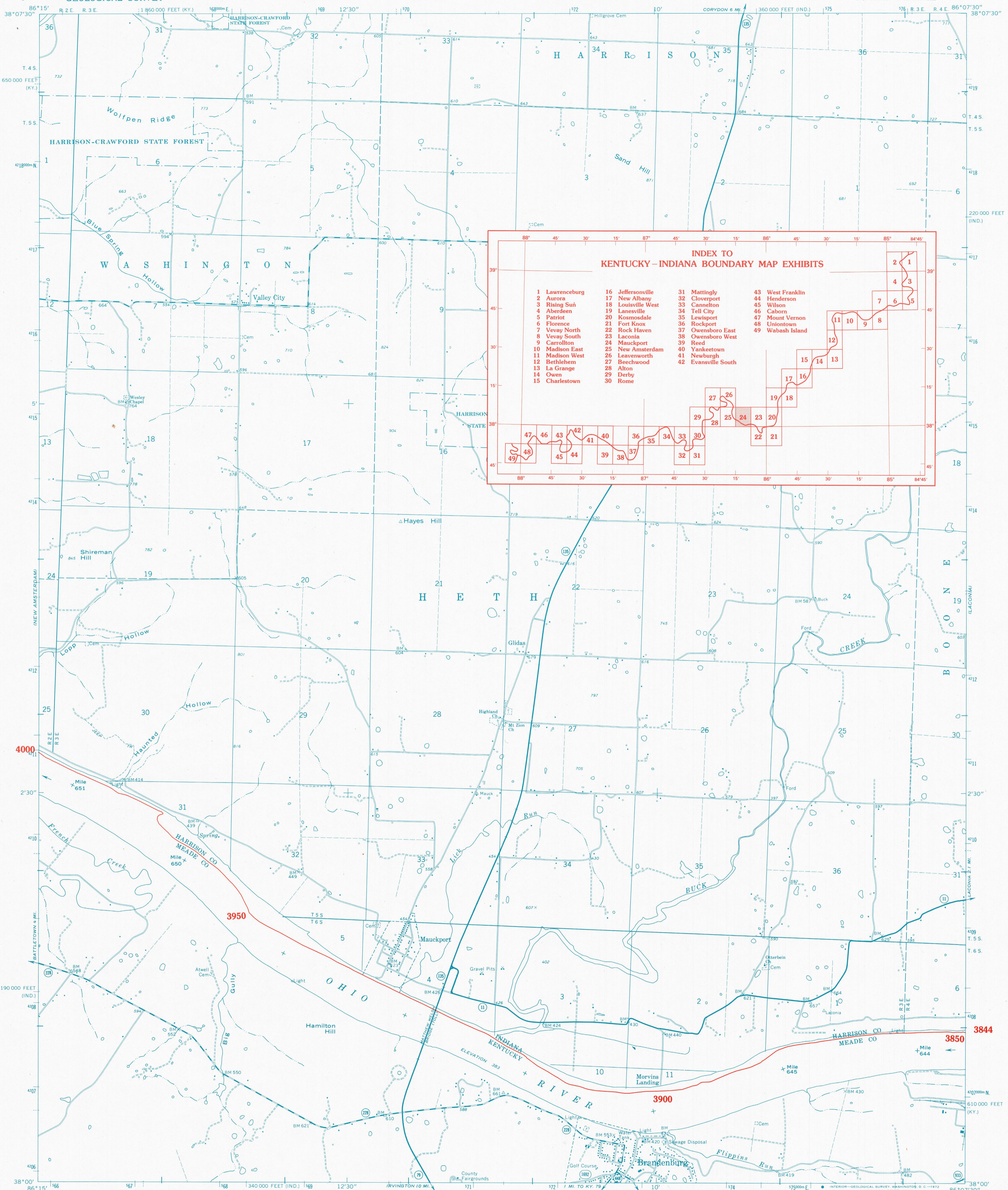


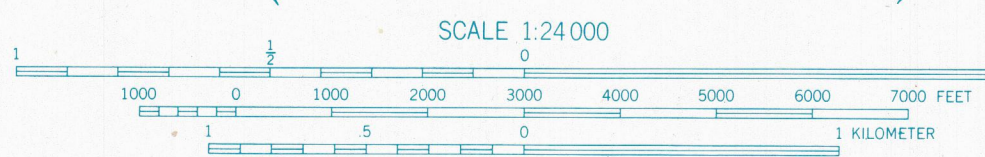
# KENTUCKY-INDIANA BOUNDARY



**INDEX TO  
KENTUCKY-INDIANA BOUNDARY MAP EXHIBITS**

1 Lawrenceburg	16 Jeffersonville	31 Mattingly	43 West Franklin
2 Aurora	17 New Albany	32 Cloverport	44 Henderson
3 Rising Sun	18 Louisville West	33 Cannelton	45 Wilson
4 Aberdeen	19 Lanesville	34 Tell City	46 Caborn
5 Patriot	20 Kosmosdale	35 Lewisport	47 Mount Vernon
6 Florence	21 Fort Knox	36 Rockport	48 Uniontown
7 Vevey North	22 Rock Haven	37 Owensboro East	49 Wabash Island
8 Vevey South	23 Laconia	38 Owensboro West	
9 Carrollton	24 Mauckport	39 Reed	
10 Madison East	25 New Amsterdam	40 Yankeetown	
11 Madison West	26 Leavenworth	41 Newburgh	
12 Bethlehem	27 Beechwood	42 Evansville South	
13 La Grange	28 Alton		
14 Owen	29 Derby		
15 Charlestown	30 Rome		

Mapped by the Geological Survey and the Army Map Service  
Edited and published by the Geological Survey  
Control by USGS, USC&GS, and USCE  
Topography in Indiana by plane-table surveys 1945. Topography  
in Kentucky by photogrammetric methods from aerial photographs  
taken 1947. Field checked 1950. Revised from aerial photographs  
taken 1969. Field checked 1970  
Polyconic projection. 1927 North American datum  
10,000-foot grids based on Indiana coordinate system,  
east zone, and Kentucky coordinate system, south zone  
1,000-meter Universal Transverse Mercator grid ticks,  
zone 16, shown in blue



**1927 NORTH AMERICAN DATUM**  
KENTUCKY-INDIANA BOUNDARY COORDINATES DEFINING  
THE BOUNDARY ON THIS MAP ARE: NUMBERS 3844 THROUGH 4000  
THE COMPLETE LISTINGS OF THE KENTUCKY-INDIANA BOUNDARY  
COORDINATES ARE CONTAINED IN EXHIBIT NO. 50

COORDINATE NUMBERS SHOWN WITHIN THIS MAP INDICATE  
APPROXIMATE LOCATIONS AND ARE INTENDED AS REFERENCE ONLY



**ROAD CLASSIFICATION**

Primary highway, hard surface	Light-duty road, hard or improved surface
Secondary highway, hard surface	Unimproved road
Interstate Route	U. S. Route
	State Route

MAUCKPORT, IND. - KY.  
SW/4 CORYDON 15' QUADRANGLE  
N3800-W8607.5/7.5

1970

**KENTUCKY v. INDIANA No. 81, Orig.  
JOINT EXHIBIT NO. 24**

**THE OHIO RIVER BOUNDARY WAS DETERMINED  
IN KENTUCKY V. INDIANA, NO. 81, ORIGINAL,  
474 U. S. THE FINAL DECREE WAS  
ENTERED ON NOVEMBER 4, 1985.**