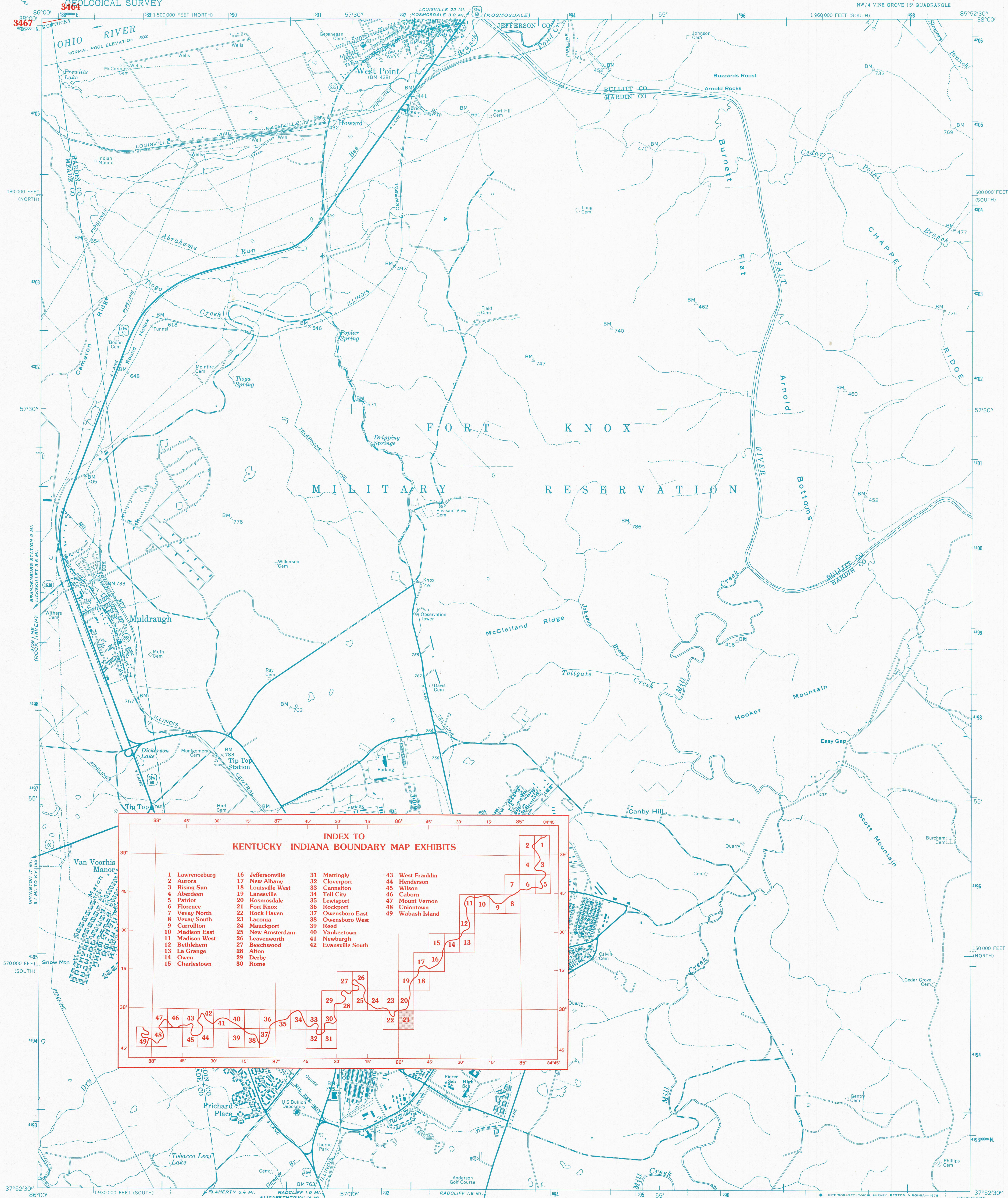


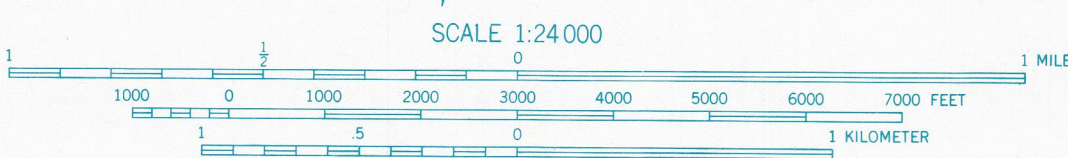
# KENTUCKY-INDIANA BOUNDARY



**INDEX TO  
KENTUCKY-INDIANA BOUNDARY MAP EXHIBITS**

1 Lawrenceburg	16 Jeffersonville	31 Mattingly	43 West Franklin
2 Aurora	17 New Albany	32 Cloverport	44 Henderson
3 Rising Sun	18 Louisville West	33 Cannelton	45 Wilson
4 Aberdeen	19 Lanesville	34 Tell City	46 Caborn
5 Patriot	20 Kosmosdale	35 Lewisport	47 Mount Vernon
6 Florence	21 Fort Knox	36 Rockport	48 Uniontown
7 Vevay North	22 Rock Haven	37 Owensboro East	49 Wabash Island
8 Vevay South	23 Laonia	38 Owensboro West	
9 Carrollton	24 Mauckport	39 Reed	
10 Madison East	25 New Amsterdam	40 Yanketown	
11 Madison West	26 Leavenworth	41 Newburgh	
12 Bethlehem	27 Beechwood	42 Evansville South	
13 La Grange	28 Alton		
14 Owen	29 Derby		
15 Charlestown	30 Rome		

Mapped by the Army Map Service and the Geological Survey  
Edited and published by the Geological Survey  
Control by USGS, USC&GS, and USCE  
Topography from aerial photographs by photogrammetric methods  
Aerial photographs taken 1944 and 1945. Field check 1946.  
Revised by the Geological Survey 1960  
Polyconic projection. 1927 North American datum  
10,000-foot grids based on Kentucky coordinate system, south  
and north zones  
1000-meter Universal Transverse Mercator grid ticks,  
zone 16, shown in blue



**ROAD CLASSIFICATION**  
 Heavy-duty ——— Light-duty ———  
 Medium-duty ——— Unimproved dirt - - - - -  
 U.S. Route ——— State Route ———



**FORT KNOX, KY.**  
 NW 4 VINE GROVE 15' QUADRANGLE  
 N 3752.5-W 8552.5/7.5  
 1960  
 AMS 3859 IV NW-SERIES V 853

**THE OHIO RIVER BOUNDARY WAS DETERMINED  
 IN KENTUCKY V. INDIANA, NO. 81, ORIGINAL,  
 474 U.S. THE FINAL DECREE WAS  
 ENTERED ON NOVEMBER 4, 1985.**

**1927 NORTH AMERICAN DATUM**  
 KENTUCKY-INDIANA BOUNDARY COORDINATES DEFINING  
 THE BOUNDARY ON THIS MAP ARE: NUMBERS 3464 THROUGH 3467  
 THE COMPLETE LISTINGS OF THE KENTUCKY-INDIANA BOUNDARY  
 COORDINATES ARE CONTAINED IN EXHIBIT NO. 50  
 COORDINATE NUMBERS SHOWN WITHIN THIS MAP INDICATE  
 APPROXIMATE LOCATIONS AND ARE INTENDED AS REFERENCE ONLY

**KENTUCKY v. INDIANA No. 81, Orig.  
 JOINT EXHIBIT NO. 21**