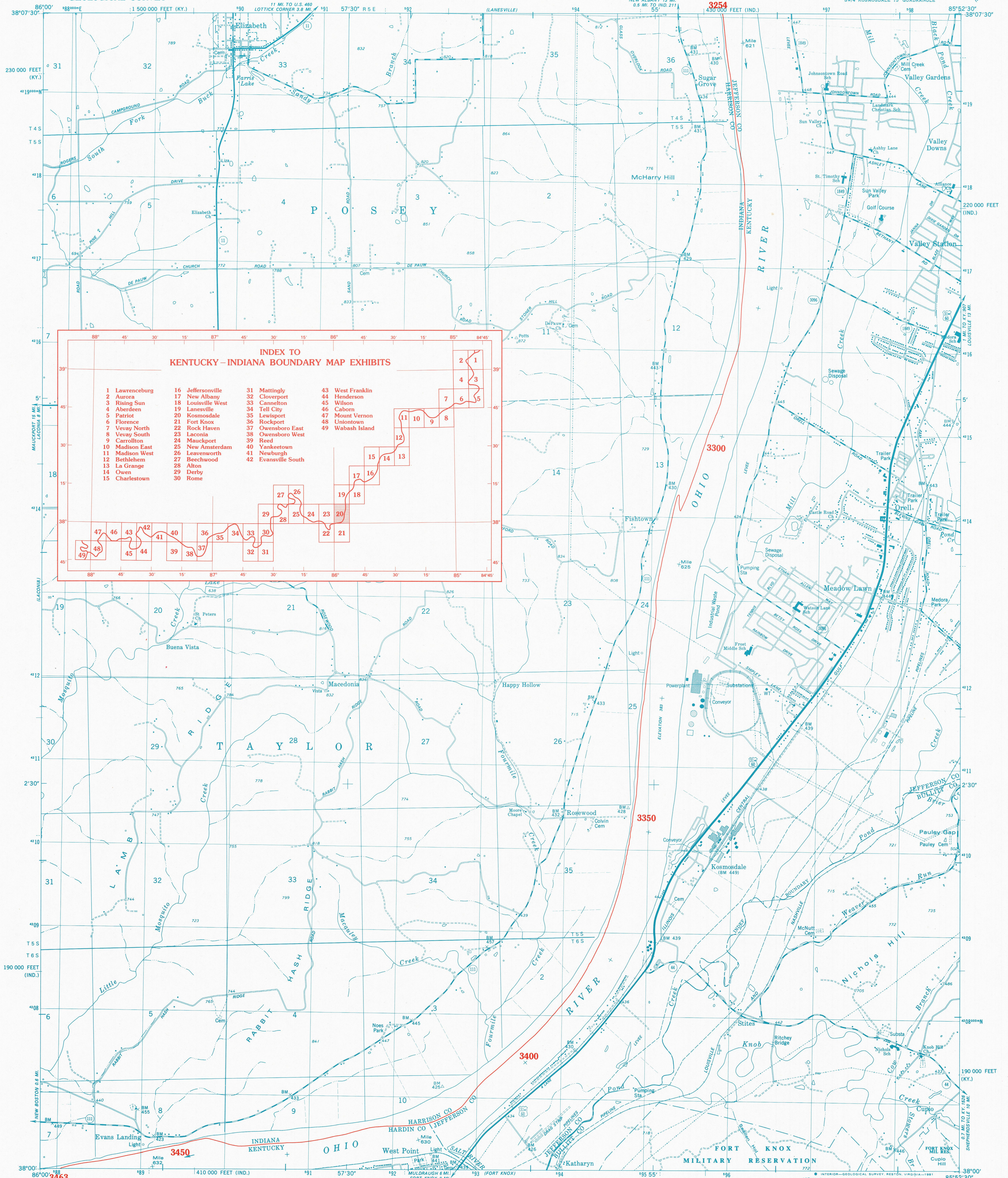


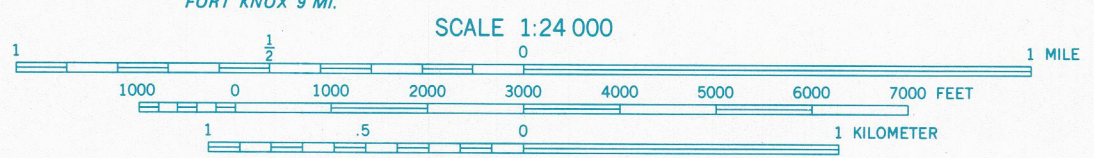
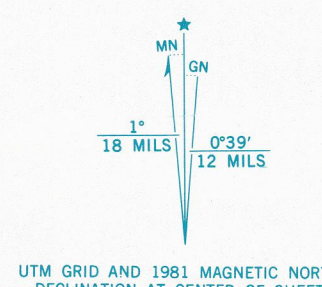
KENTUCKY-INDIANA BOUNDARY



**INDEX TO
KENTUCKY-INDIANA BOUNDARY MAP EXHIBITS**

1 Lawrenceburg	16 Jeffersonville	31 Mattingly	43 West Franklin
2 Aurora	17 New Albany	32 Cloverport	44 Henderson
3 Rising Sun	18 Louisville West	33 Cannelton	45 Wilson
4 Aberdeen	19 Lanesville	34 Tell City	46 Caborn
5 Patriot	20 Kosmosdale	35 Lewisport	47 Mount Vernon
6 Florence	21 Fort Knox	36 Rockport	48 Uniontown
7 Vevay North	22 Rock Haven	37 Owensboro East	49 Wabash Island
8 Vevay South	23 Laconia	38 Owensboro West	
9 Carrollton	24 Mauckport	39 Reed	
10 Madison East	25 New Amsterdam	40 Yanketown	
11 Madison West	26 Leavenworth	41 Newburgh	
12 Bethlehem	27 Beechwood	42 Evansville South	
13 La Grange	28 Alton		
14 Owen	29 Derby		
15 Charlestown	30 Rome		

Mapped, edited, and published by the Geological Survey in cooperation with Kentucky Geological Survey. Control by USGS, NOS/NOAA, and USCE. Topography by photogrammetric methods from aerial photographs taken 1949. Field checked 1950. Revised from aerial photographs taken 1978. Field checked 1979. Map edited 1981. Polyconic projection; 10,000-foot grid ticks based on Indiana coordinate system, east zone and Kentucky coordinate system, north zone. 1000-meter Universal Transverse Mercator grid, zone 16 1927 North American Datum.



1927 NORTH AMERICAN DATUM
KENTUCKY-INDIANA BOUNDARY COORDINATES DEFINING THE BOUNDARY ON THIS MAP ARE: NUMBERS 3254 THROUGH 3463
THE COMPLETE LISTINGS OF THE KENTUCKY-INDIANA BOUNDARY COORDINATES ARE CONTAINED IN EXHIBIT NO. 50
COORDINATE NUMBERS SHOWN WITHIN THIS MAP INDICATE APPROXIMATE LOCATIONS AND ARE INTENDED AS REFERENCE ONLY



ROAD CLASSIFICATION
Primary highway, hard surface
Secondary highway, hard surface
Light-duty road, hard or improved surface
Unimproved road
Interstate Route
U. S. Route
State Route

KOSMOSDALE, KY.-IND.
SW/4 KOSMOSDALE 15' QUADRANGLE
N3800-W8552.5/7.5

1981
KENTUCKY v. INDIANA No. 81, Orig. JOINT EXHIBIT NO. 20

THE OHIO RIVER BOUNDARY WAS DETERMINED IN KENTUCKY V. INDIANA, NO. 81, ORIGINAL, 474 U. S. THE FINAL DECREE WAS ENTERED ON NOVEMBER 4, 1985.