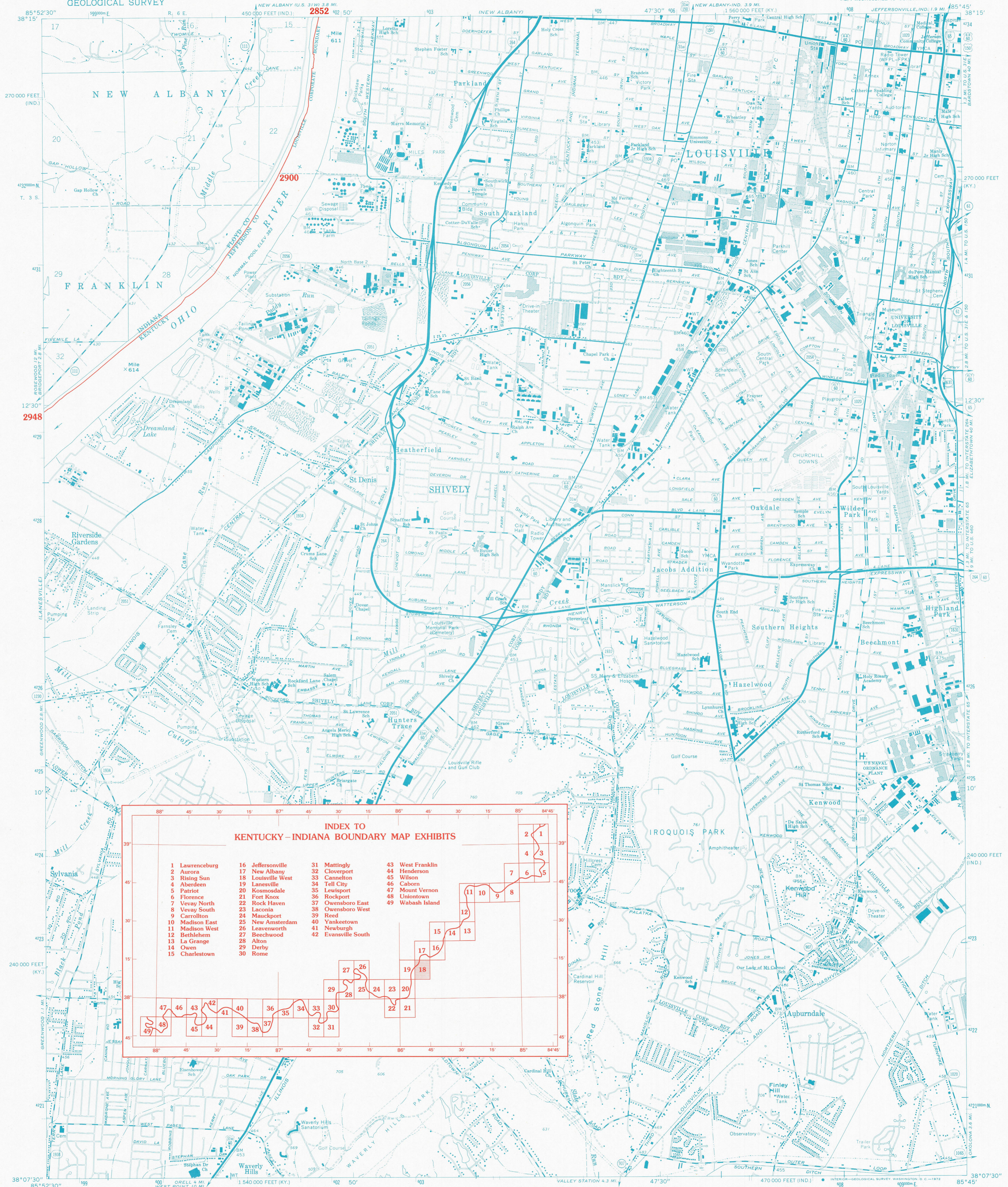


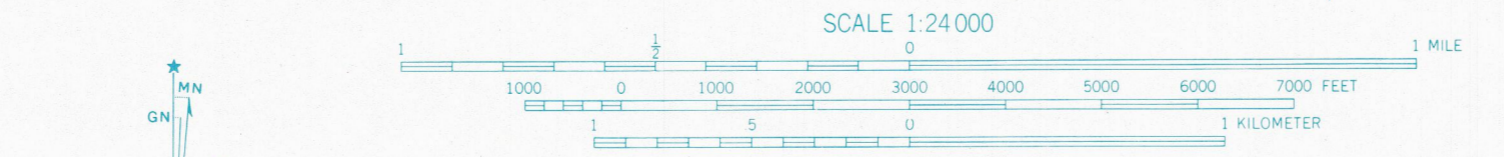
# KENTUCKY-INDIANA BOUNDARY



### INDEX TO KENTUCKY-INDIANA BOUNDARY MAP EXHIBITS

- |                 |                    |                     |                  |
|-----------------|--------------------|---------------------|------------------|
| 1 Lawrenceburg  | 16 Jeffersonville  | 31 Mattingly        | 43 West Franklin |
| 2 Aurora        | 17 New Albany      | 32 Cloverport       | 44 Henderson     |
| 3 Rising Sun    | 18 Louisville West | 33 Cannelton        | 45 Wilson        |
| 4 Aberdeen      | 19 Lanesville      | 34 Tell City        | 46 Caborn        |
| 5 Patriot       | 20 Kosmosdale      | 35 Lewisport        | 47 Mount Vernon  |
| 6 Florence      | 21 Fort Knox       | 36 Rockport         | 48 Uniontown     |
| 7 Vevay North   | 22 Rock Haven      | 37 Owensboro East   | 49 Wabash Island |
| 8 Vevay South   | 23 Laconia         | 38 Owensboro West   |                  |
| 9 Carrollton    | 24 Mauckport       | 39 Reed             |                  |
| 10 Madison East | 25 New Amsterdam   | 40 Yanketown        |                  |
| 11 Madison West | 26 Leavenworth     | 41 Newburgh         |                  |
| 12 Bethlehem    | 27 Beechwood       | 42 Evansville South |                  |
| 13 La Grange    | 28 Alton           |                     |                  |
| 14 Owen         | 29 Derby           |                     |                  |
| 15 Charlestown  | 30 Rome            |                     |                  |

Mapped by the Army Map Service and the Geological Survey  
Edited and published by the Geological Survey  
Control by USGS, USC&GS, USCE, and the City of Louisville  
Topography by photogrammetric methods from aerial photographs  
taken 1947. Field checked 1950. Revised by the Geological Survey 1965  
Polyconic projection. 1927 North American datum  
10 000-foot grids based on Kentucky coordinate system,  
north zone, and Indiana coordinate system, east zone  
1000-meter Universal Transverse Mercator grid ticks,  
zone 16, shown in blue



1927 NORTH AMERICAN DATUM  
KENTUCKY-INDIANA BOUNDARY COORDINATES DEFINING  
THE BOUNDARY ON THIS MAP ARE: NUMBERS 2852 THROUGH 2948  
THE COMPLETE LISTINGS OF THE KENTUCKY-INDIANA BOUNDARY  
COORDINATES ARE CONTAINED IN EXHIBIT NO. 50  
COORDINATE NUMBERS SHOWN WITHIN THIS MAP INDICATE  
APPROXIMATE LOCATIONS AND ARE INTENDED AS REFERENCE ONLY



ROAD CLASSIFICATION  
Heavy-duty ——— Light-duty ———  
Medium-duty ——— Unimproved dirt ———  
○ Interstate Route ○ U.S. Route ○ State Route

LOUISVILLE WEST, KY.-IND.  
NE/4 KOSMOSDALE 15 QUADRANGLE  
N3807.5-W8545/7.5  
1965  
PHOTOREVISED 1971

**KENTUCKY v. INDIANA No. 81, Orig.  
JOINT EXHIBIT NO. 18**