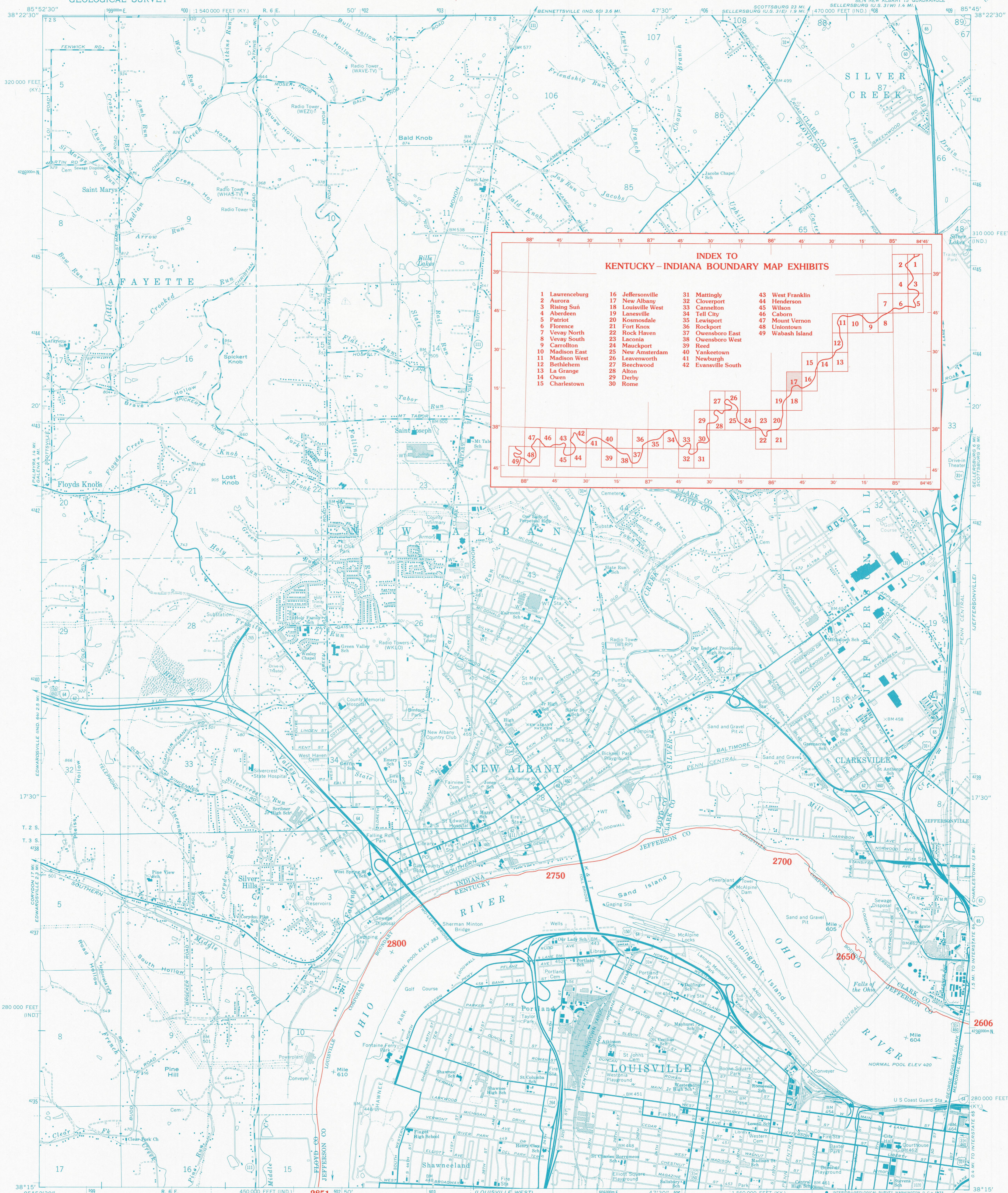


KENTUCKY-INDIANA BOUNDARY

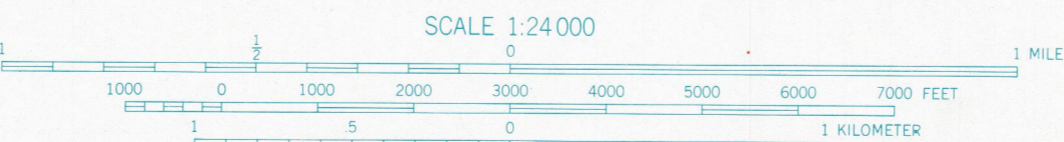


**INDEX TO
KENTUCKY-INDIANA BOUNDARY MAP EXHIBITS**

1 Lawrenceburg	16 Jeffersonville	31 Mattingly	43 West Franklin
2 Aurora	17 New Albany	32 Cloverport	44 Henderson
3 Rising Sun	18 Louisville West	33 Cannelton	45 Wilson
4 Aberdeen	19 Lanesville	34 Tell City	46 Caborn
5 Patriot	20 Kosmosdale	35 Lewisport	47 Mount Vernon
6 Florence	21 Fort Knox	36 Rockport	48 Uniontown
7 Vevey North	22 Rock Haven	37 Owensboro East	49 Wabash Island
8 Vevey South	23 Laconia	38 Owensboro West	
9 Carrollton	24 Mauckport	39 Reed	
10 Madison East	25 New Amsterdam	40 Yankeetown	
11 Madison West	26 Leavenworth	41 Newburgh	
12 Bethlehem	27 Beechwood	42 Evansville South	
13 La Grange	28 Alton		
14 Owen	29 Derby		
15 Charlestown	30 Rome		

Mapped, edited, and published by the Geological Survey in cooperation with Indiana Department of Natural Resources and Kentucky Geological Survey. Revised in cooperation with Kentucky Geological Survey.

Control by USGS, USC&GS, USCE, and City of Louisville. Topography in Indiana by planetable surveys 1937-1938. Planimetry in Kentucky by planetable surveys from aerial photographs taken 1949. Topography by planetable surveys 1950. Entire map revised 1965. Polyconic projection. 1927 North American datum. 10,000-foot grids based on Indiana coordinate system, east zone, and Kentucky coordinate system, north zone. 1000-meter Universal Transverse Mercator grid ticks, zone 16, shown in blue.



1927 NORTH AMERICAN DATUM
KENTUCKY-INDIANA BOUNDARY COORDINATES DEFINING THE BOUNDARY ON THIS MAP ARE: NUMBERS 2606 THROUGH 2851
THE COMPLETE LISTINGS OF THE KENTUCKY-INDIANA BOUNDARY COORDINATES ARE CONTAINED IN EXHIBIT NO. 50
COORDINATE NUMBERS SHOWN WITHIN THIS MAP INDICATE APPROXIMATE LOCATIONS AND ARE INTENDED AS REFERENCE ONLY



ROAD CLASSIFICATION
Heavy-duty ————— Light-duty —————
Medium-duty ————— Unimproved dirt —————
○ Interstate Route ○ U.S. Route ○ State Route

NEW ALBANY, IND.-KY.
SE/4 NEW ALBANY 15' QUADRANGLE
N3815-W8545/7.5

1965
PHOTOREVISED 1971

KENTUCKY v. INDIANA No. 81, Orig. JOINT EXHIBIT NO. 17

THE OHIO RIVER BOUNDARY WAS DETERMINED IN KENTUCKY V. INDIANA, NO. 81, ORIGINAL, 474 U.S. THE FINAL DECREE WAS ENTERED ON NOVEMBER 4, 1985.