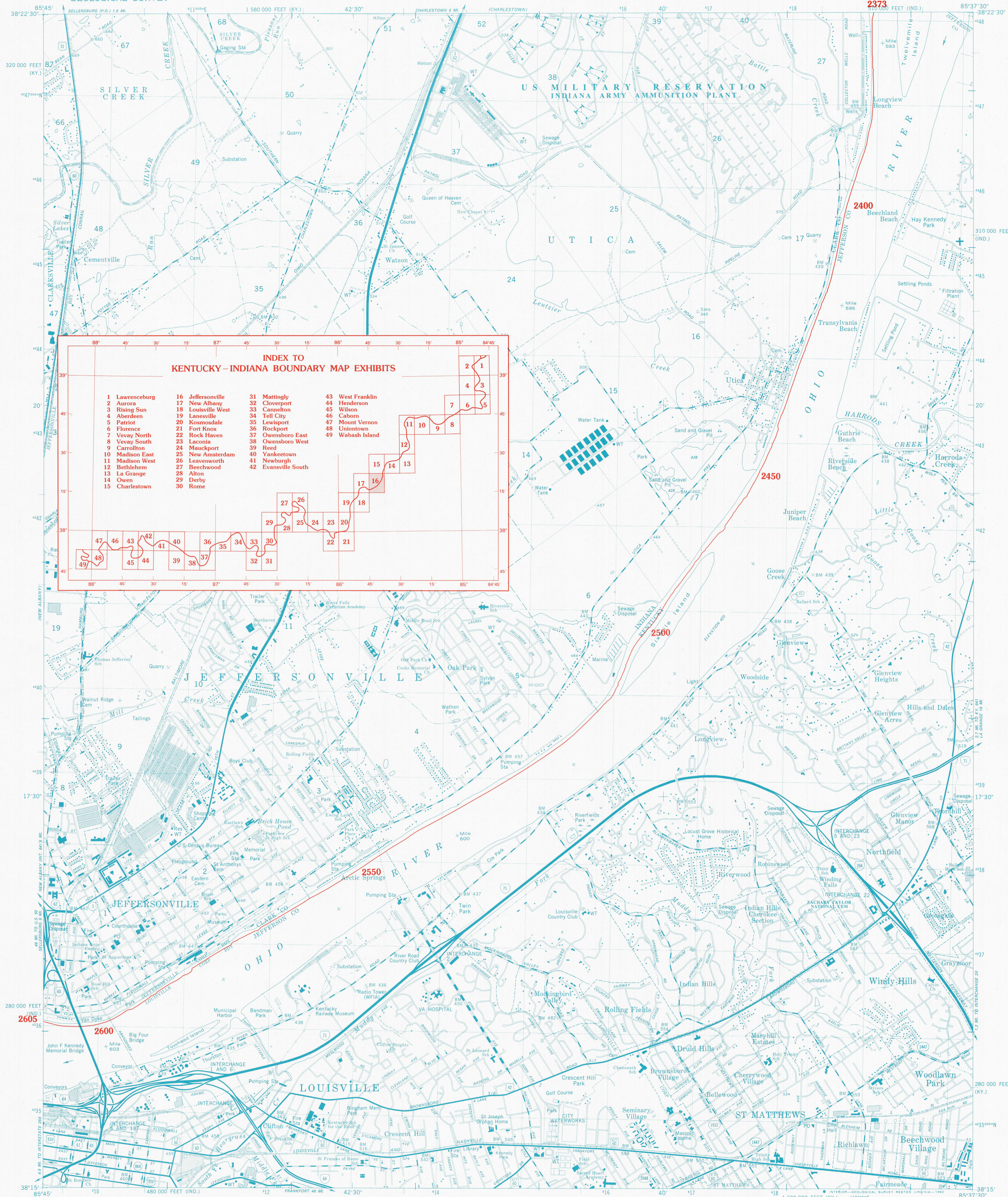


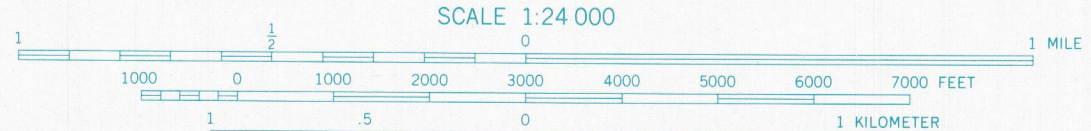
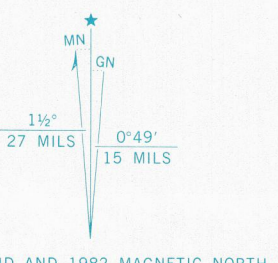
# KENTUCKY-INDIANA BOUNDARY



**INDEX TO KENTUCKY-INDIANA BOUNDARY MAP EXHIBITS**

1 Lawrenceburg	16 Jeffersonville	31 Mattingly	43 West Franklin
2 Aurora	17 New Albany	32 Cloverport	44 Henderson
3 Rising Sun	18 Louisville West	33 Cannelton	45 Wilson
4 Aberdeen	19 Lanesville	34 Tell City	46 Caborn
5 Patriot	20 Kosmosdale	35 Lewisport	47 Mount Vernon
6 Florence	21 Fort Knox	36 Rockport	48 Uniontown
7 Vevey North	22 Rock Haven	37 Owensboro East	49 Wabash Island
8 Vevey South	23 Laconia	38 Owensboro West	
9 Carrollton	24 Mauckport	39 Reed	
10 Madison East	25 New Amsterdam	40 Yanketown	
11 Madison West	26 Leavenworth	41 Newburgh	
12 Bethlehem	27 Beechwood	42 Evansville South	
13 La Grange	28 Alton		
14 Owen	29 Derby		
15 Charlestown	30 Rome		

Mapped, edited, and published by the Geological Survey in cooperation with Indiana Department of Natural Resources and Kentucky Geological Survey by USGS, NOS/NOAA, USCE, and the City of Louisville  
Topography in Indiana by planetable surveys 1937. Topography in Kentucky by photogrammetric methods from aerial photographs taken 1945. Field checked 1950. Revised from aerial photographs taken 1976. Field checked 1979. Map edited 1982.  
Polyconic projection. 10,000-foot grid ticks based on Indiana coordinate system, east zone, and Kentucky coordinate system, north zone.  
1000-meter Universal Transverse Mercator grid, zone 16. 1927 North American Datum



**ROAD CLASSIFICATION**

Primary highway, hard surface	Light-duty road, hard or improved surface
Secondary highway, hard surface	Unimproved road
Interstate Route	U. S. Route
	State Route

**THE OHIO RIVER BOUNDARY WAS DETERMINED IN KENTUCKY V. INDIANA, NO. 81, ORIGINAL, 474 U.S. THE FINAL DECREE WAS ENTERED ON NOVEMBER 4, 1985.**

**1927 NORTH AMERICAN DATUM**  
**KENTUCKY-INDIANA BOUNDARY COORDINATES DEFINING THE BOUNDARY ON THIS MAP ARE: NUMBERS 2373 THROUGH 2605**  
**THE COMPLETE LISTINGS OF THE KENTUCKY-INDIANA BOUNDARY COORDINATES ARE CONTAINED IN EXHIBIT NO. 50**  
**COORDINATE NUMBERS SHOWN WITHIN THIS MAP INDICATE APPROXIMATE LOCATIONS AND ARE INTENDED AS REFERENCE ONLY**

1982  
**KENTUCKY v. INDIANA No. 81, Orig.**  
**JOINT EXHIBIT NO. 16**