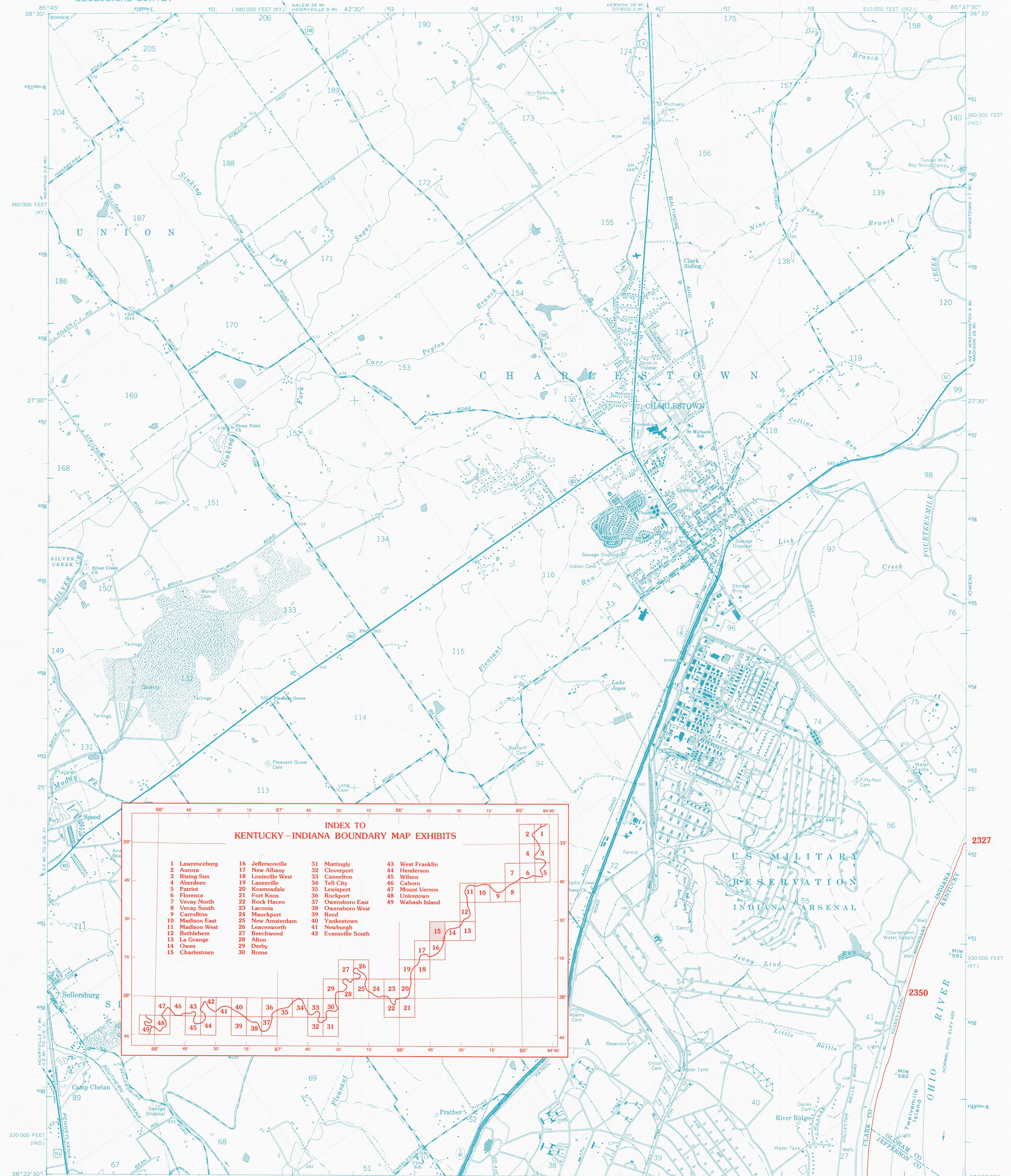


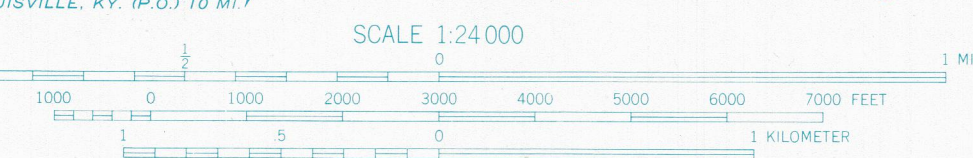
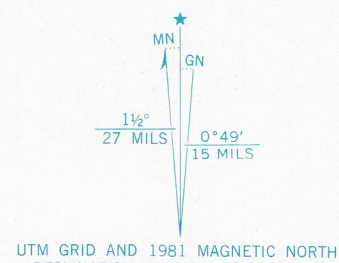
KENTUCKY-INDIANA BOUNDARY



**INDEX TO
KENTUCKY-INDIANA BOUNDARY MAP EXHIBITS**

| | | | |
|-----------------|--------------------|---------------------|------------------|
| 1 Lawrenceburg | 16 Jeffersonville | 31 Mattingly | 43 West Franklin |
| 2 Aurora | 17 New Albany | 32 Cloverport | 44 Henderson |
| 3 Rising Sun | 18 Louisville West | 33 Cammerton | 45 Wilson |
| 4 Aberdeen | 19 Lanesville | 34 Tell City | 46 Caborn |
| 5 Patriot | 20 Kosmosdale | 35 Lewisport | 47 Mount Vernon |
| 6 Florence | 21 Fort Knox | 36 Rockport | 48 Uniontown |
| 7 Vevay North | 22 Rock Haven | 37 Owensboro East | 49 Wabash Island |
| 8 Vevay South | 23 Laconia | 38 Owensboro West | |
| 9 Carrollton | 24 Mauckport | 39 Reed | |
| 10 Madison East | 25 New Amsterdam | 40 Yankeetown | |
| 11 Madison West | 26 Leavenworth | 41 Newburgh | |
| 12 Bethlehem | 27 Beechwood | 42 Evansville South | |
| 13 La Grange | 28 Alton | | |
| 14 Owen | 29 Derby | | |
| 15 Charlestown | 30 Rome | | |

Mapped, edited, and published by the Geological Survey
Control by USGS and NOS/NOAA
Topography by planetable survey 1937. Revised 1963
Polyconic projection. 10,000-foot grids based on Indiana coordinate system, east zone, and Kentucky coordinate system, north zone. 1000-meter Universal Transverse Mercator grid ticks, zone 16, shown in blue. 1927 North American Datum



1927 NORTH AMERICAN DATUM

KENTUCKY-INDIANA BOUNDARY COORDINATES DEFINING THE BOUNDARY ON THIS MAP ARE: NUMBERS 2327 THROUGH 2372
THE COMPLETE LISTINGS OF THE KENTUCKY-INDIANA BOUNDARY COORDINATES ARE CONTAINED IN EXHIBIT NO. 50
COORDINATE NUMBERS SHOWN WITHIN THIS MAP INDICATE APPROXIMATE LOCATIONS AND ARE INTENDED AS REFERENCE ONLY



ROAD CLASSIFICATION
Heavy-duty ——— Light-duty ———
Medium-duty ——— Unimproved dirt - - - -
U. S. Route ——— Slate Route ———

CHARLESTOWN, IND.-KY.
NW/4 PROSPECT 15' QUADRANGLE
N3822.5—W8537.5/7.5

1963
PHOTOREVISED 1981

**KENTUCKY v. INDIANA No. 81, Orig.
JOINT EXHIBIT NO. 15**