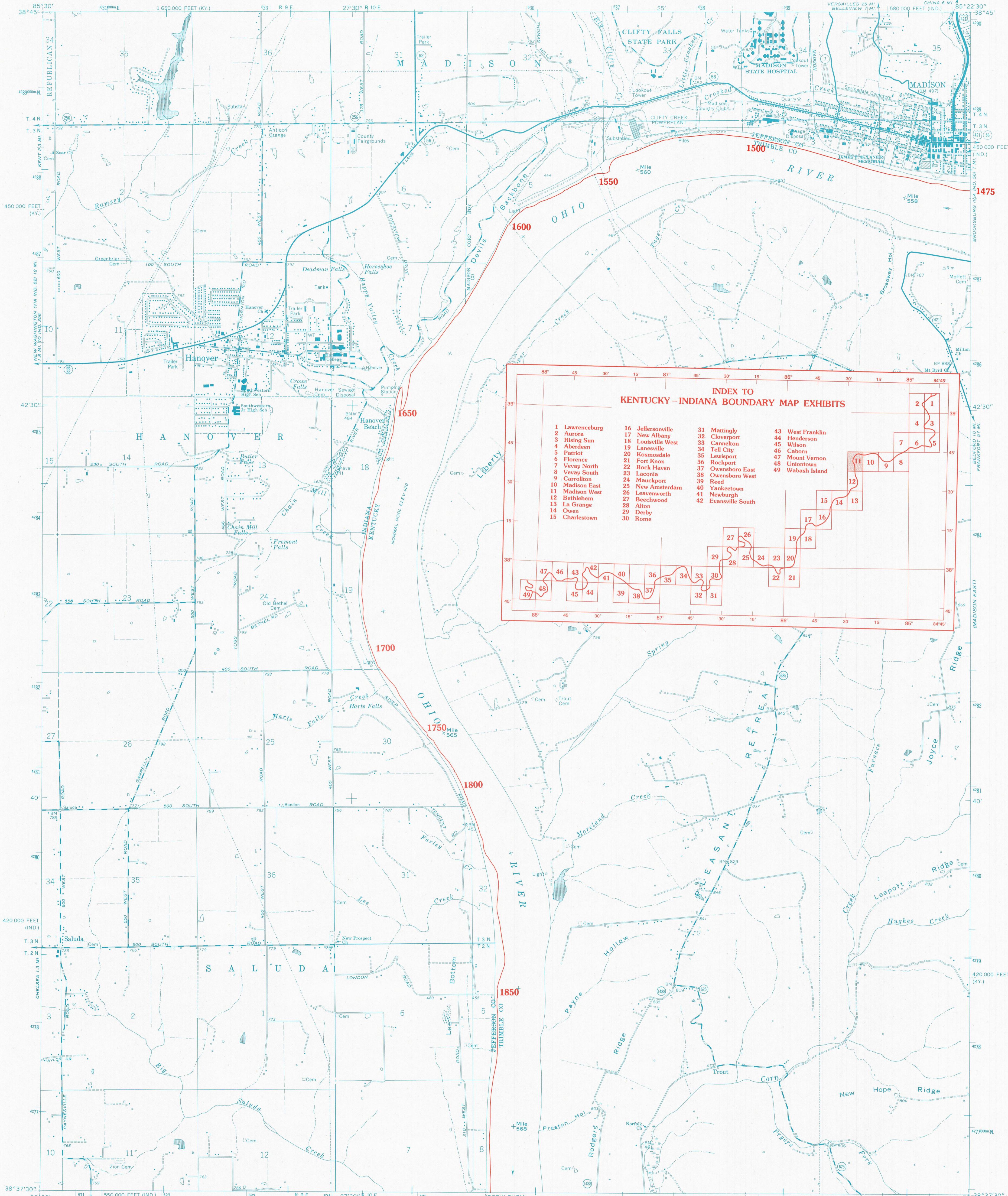


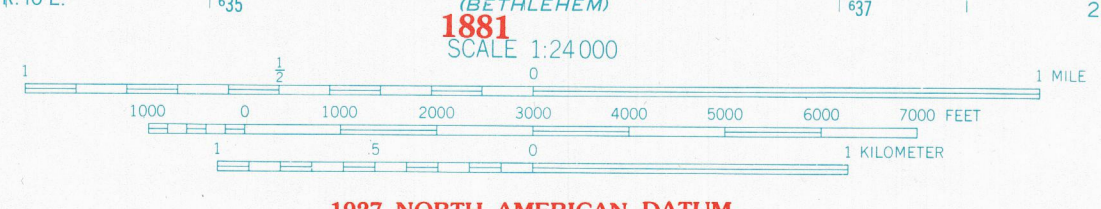
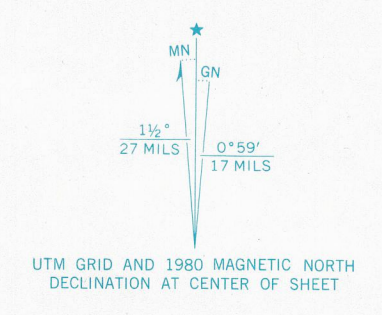
KENTUCKY-INDIANA BOUNDARY



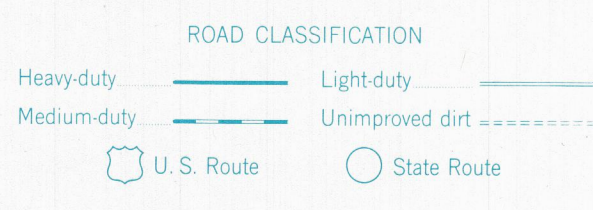
INDEX TO KENTUCKY-INDIANA BOUNDARY MAP EXHIBITS

1 Lawrenceburg	16 Jeffersonville	31 Mattingly	43 West Franklin
2 Aurora	17 New Albany	32 Cloverport	44 Henderson
3 Rising Sun	18 Louisville West	33 Cannerton	45 Wilson
4 Aberdeen	19 Lanesville	34 Tell City	46 Caborn
5 Patriot	20 Kosmosdale	35 Lewisport	47 Mount Vernon
6 Florence	21 Fort Knox	36 Rockport	48 Uniontown
7 Vevay North	22 Rock Haven	37 Owensboro East	49 Wabash Island
8 Vevay South	23 Laconia	38 Owensboro West	
9 Carrollton	24 Mauckport	39 Reed	
10 Madison East	25 New Amsterdam	40 Yankeetown	
11 Madison West	26 Leavenworth	41 Newburgh	
12 Bethlehem	27 Beechwood	42 Evansville South	
13 La Grange	28 Alton		
14 Owen	29 Derby		
15 Charlestown	30 Rome		

Mapped, edited, and published by the Geological Survey
Kentucky area mapped in cooperation with
State of Kentucky agencies
Control by USGS, USC&GS, and USCE
Topography in Indiana by planetable surveys 1938. Revised 1964
Topography in Kentucky by photogrammetric methods from aerial
photographs taken 1950. Field checked 1953. Revised 1964
Polyconic projection
10,000-foot grids based on Indiana coordinate system,
east zone, and Kentucky coordinate system, north zone
1000-meter Universal Transverse Mercator grid ticks,
zone 16, shown in blue, 1927 North American Datum
**THE OHIO RIVER BOUNDARY WAS DETERMINED
IN KENTUCKY V. INDIANA, NO. 81, ORIGINAL,
474 U.S. THE FINAL DECREE WAS
ENTERED ON NOVEMBER 4, 1985.**



1927 NORTH AMERICAN DATUM
**KENTUCKY-INDIANA BOUNDARY COORDINATES DEFINING
THE BOUNDARY ON THIS MAP ARE: NUMBERS 1475 THROUGH 1881**
**THE COMPLETE LISTINGS OF THE KENTUCKY-INDIANA BOUNDARY
COORDINATES ARE CONTAINED IN EXHIBIT NO. 50**
**COORDINATE NUMBERS SHOWN WITHIN THIS MAP INDICATE
APPROXIMATE LOCATIONS AND ARE INTENDED AS REFERENCE ONLY**



MADISON WEST, IND.-KY.
NW/4 MADISON 15' QUADRANGLE
N3837.5-W8522.5/7.5
1964
PHOTOREVISED 1980