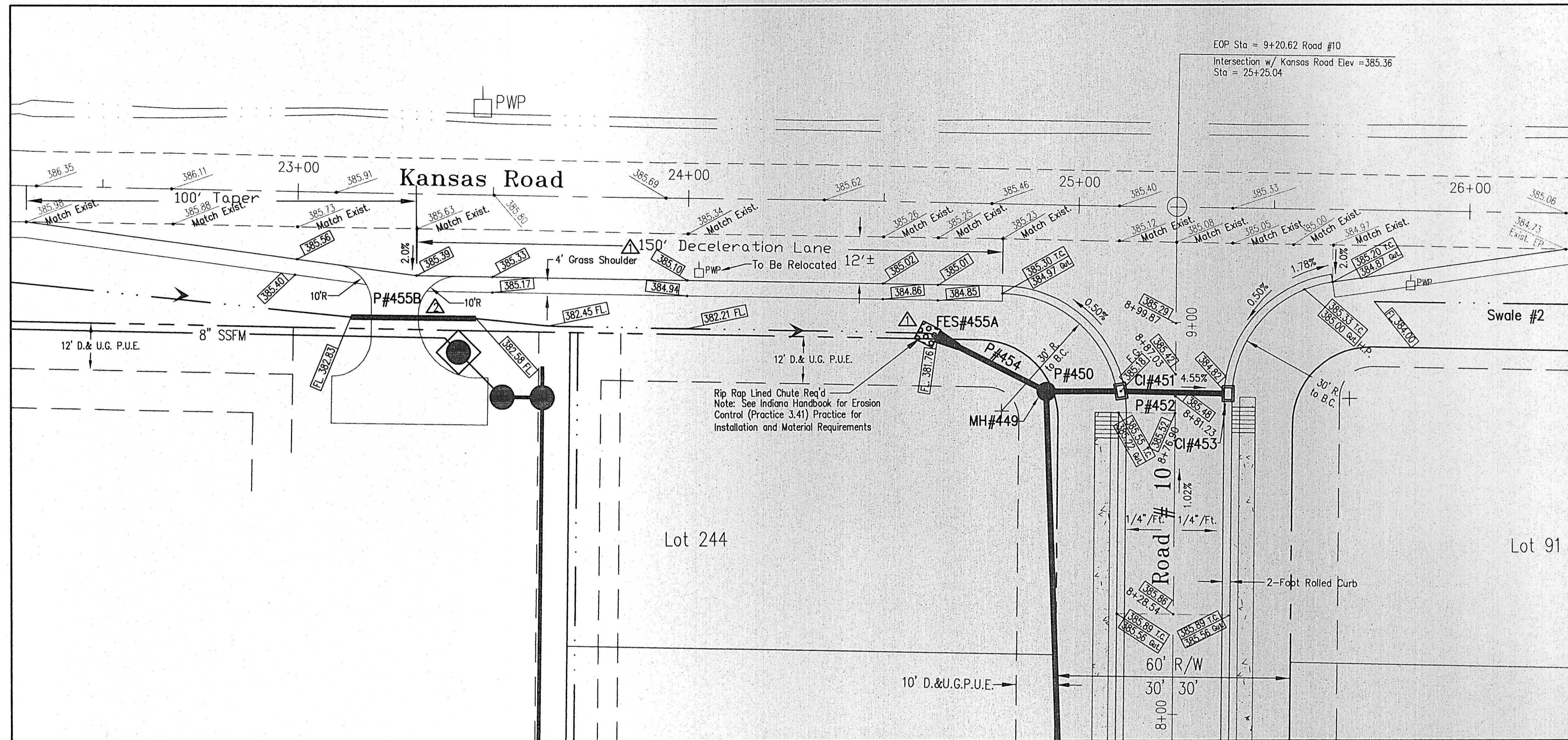


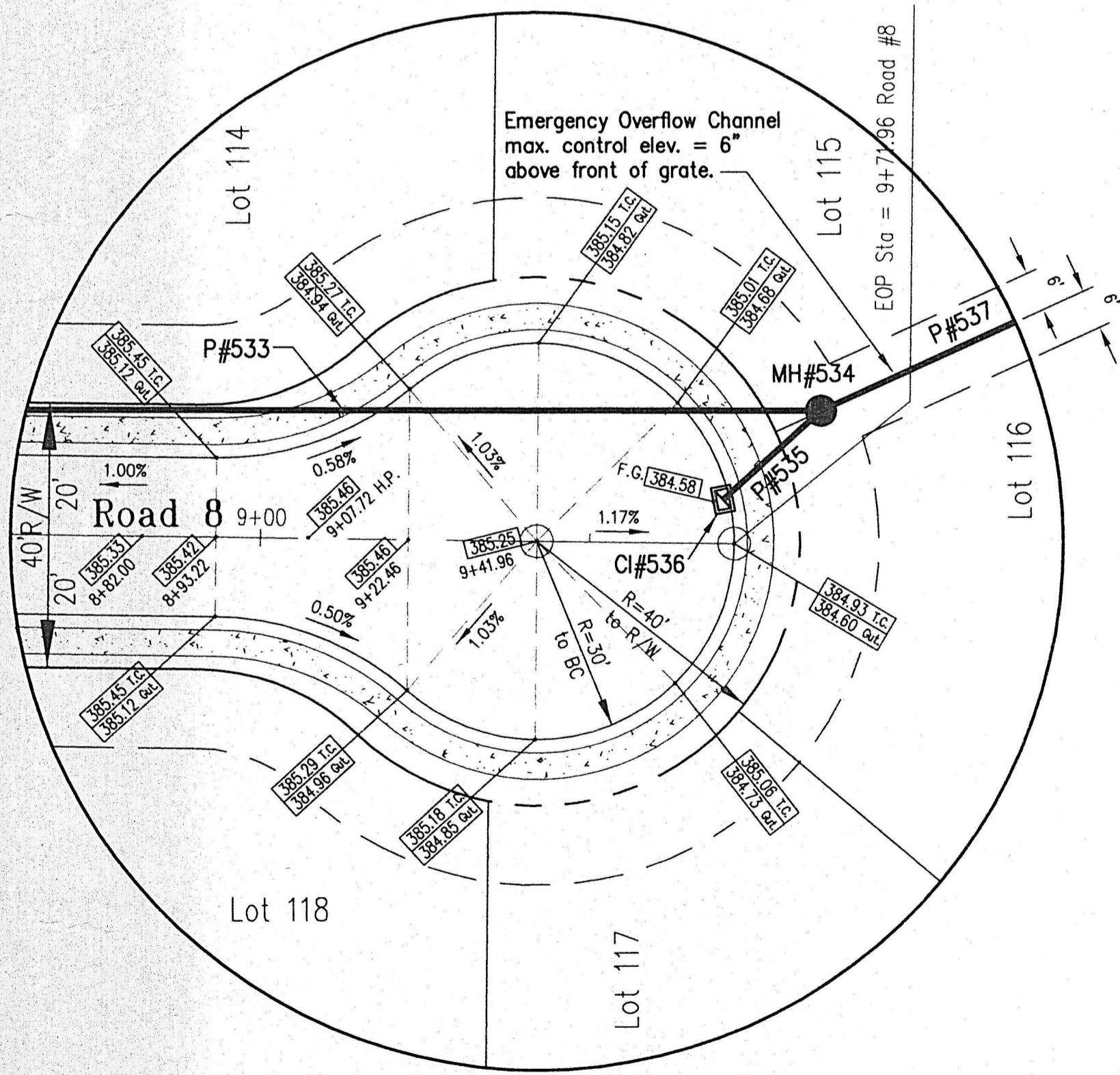
Intersection of Road # 3 and Road # 10

Scale: 1" = 20'



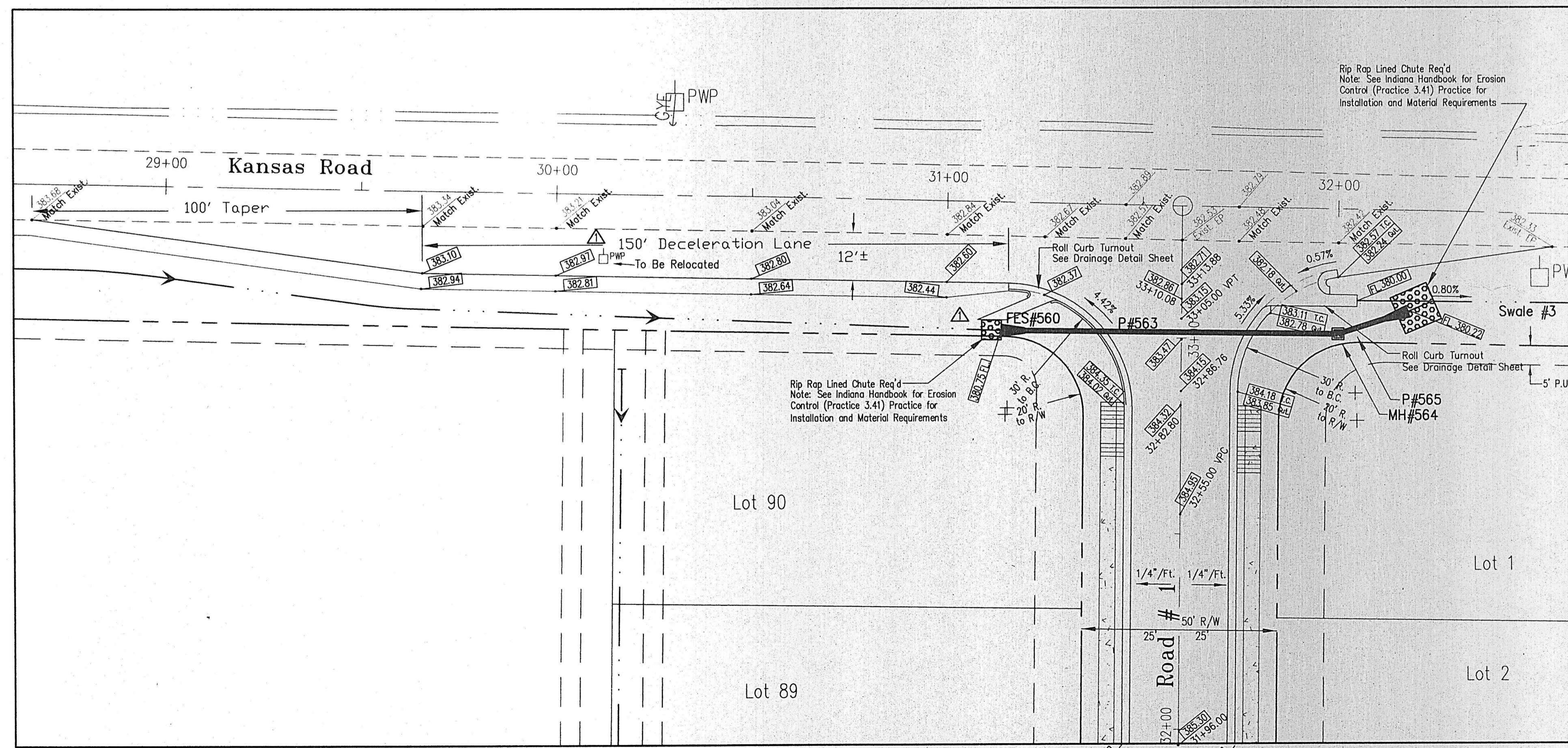
Intersection of Road # 10 and Kansas Road

Scale: 1" = 20'



Road # 8 Cul-de-Sac

Scale: 1" = 20'



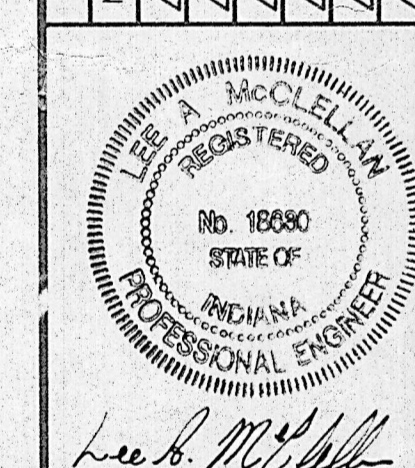
Intersection of Road # 1 and Kansas Road

Scale: 1" = 20'

Morley and Associates, Inc.
 Consulting Engineers/Surveyors/Architects
 600 S.E. Sixth Street
 Evansville, Indiana 47713
 (812) 464-9585

All plans, designs, calculations, and arrangements indicated or represented by this drawing are owned by and the property of Morley and Associates, Inc. and are loaned to the user for the purpose of construction only. No part of this drawing may be reproduced, stored in a retrieval system, or transmitted in any form or by any means, electronic, mechanical, photocopying, recording, or by any information storage and retrieval system, without the written permission of Morley and Associates, Inc. The user shall be responsible for any and all errors, omissions, or inaccuracies in this drawing and shall be liable for any and all damages, including reasonable attorney's fees, arising from the use of this drawing.

No.	By	Date	Description
1	LAM	7-15-02	Added deceleration lanes
2	LAM	7-29-02	Revised P#455B location, length and slope



Project: Wynnfield Subdivision - Section 1
 Wynnfield Development, Inc.
 Sheet Title: Intersection Details
 Scale: 1"=20'

Designed By: J.M.K.	Job Number: 4780-4-K
Drawn By: D.W.N.	Date: 07/29/02
Checked By: Xsec.dwg	Filename: Xsec.dwg
Sheet Number: C-21	of 38