

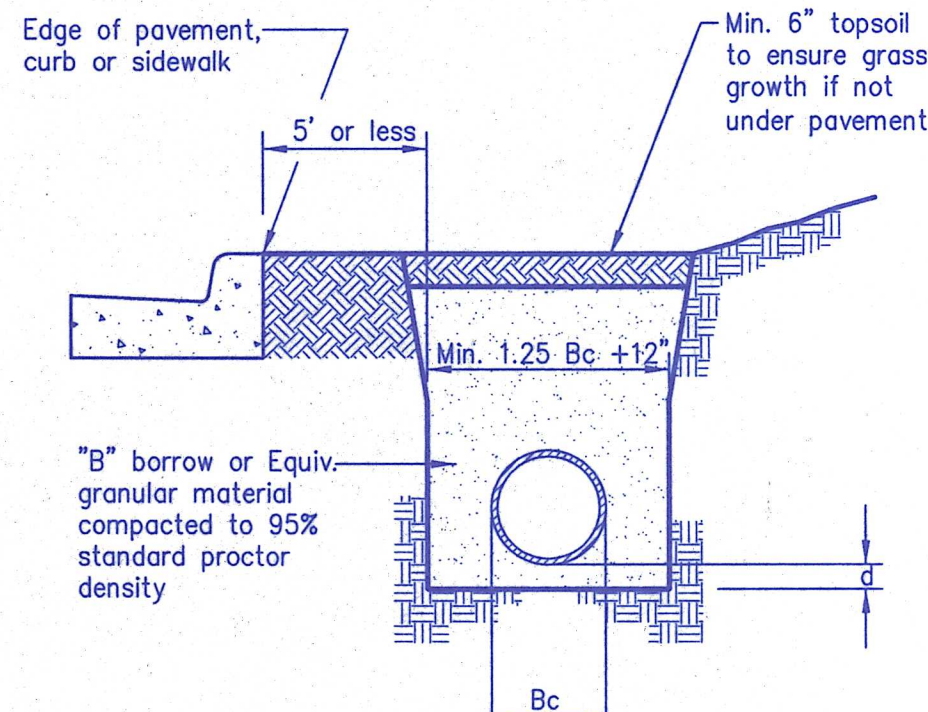
Greater than 5' from edge of pavement

Note:

All bedding & initial backfill shall be installed in 6" to 12" balanced lifts  
A minimum 9" of clearance shall be provided on each side of the installed pipe

Depth of Bedding Material Below Pipe

D	(d) Min.
27" & Smaller	3"
30" to 60"	4"
66" & Larger	6"



Beneath or within 5' of edge of pavement

Note:

All bedding & initial backfill shall be installed in 6" to 12" balanced lifts  
A minimum 9" of clearance shall be provided on each side of the installed pipe

LEGEND:

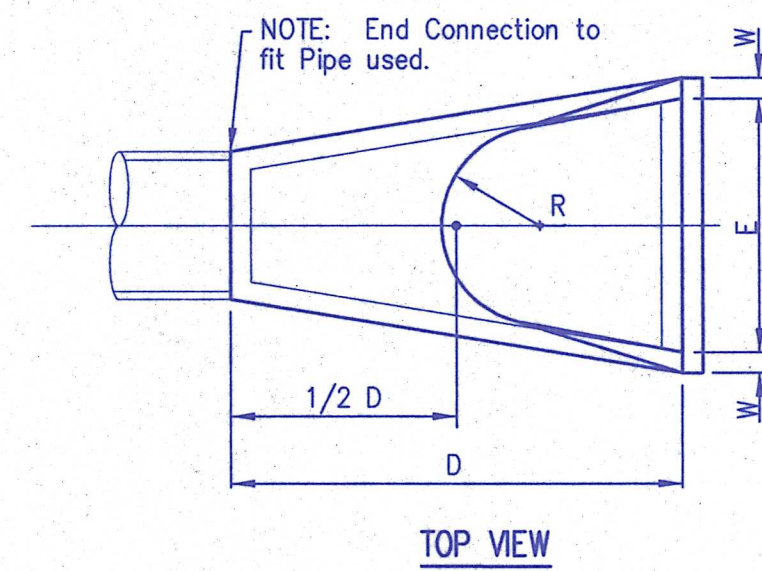
Bc = Outside Diameter  
D = Inside Diameter  
d = Depth of Bedding Material Below Pipe

### Reinforced Concrete Storm Sewer Bedding

5012.dwg Date: 10-14-98

NO SCALE

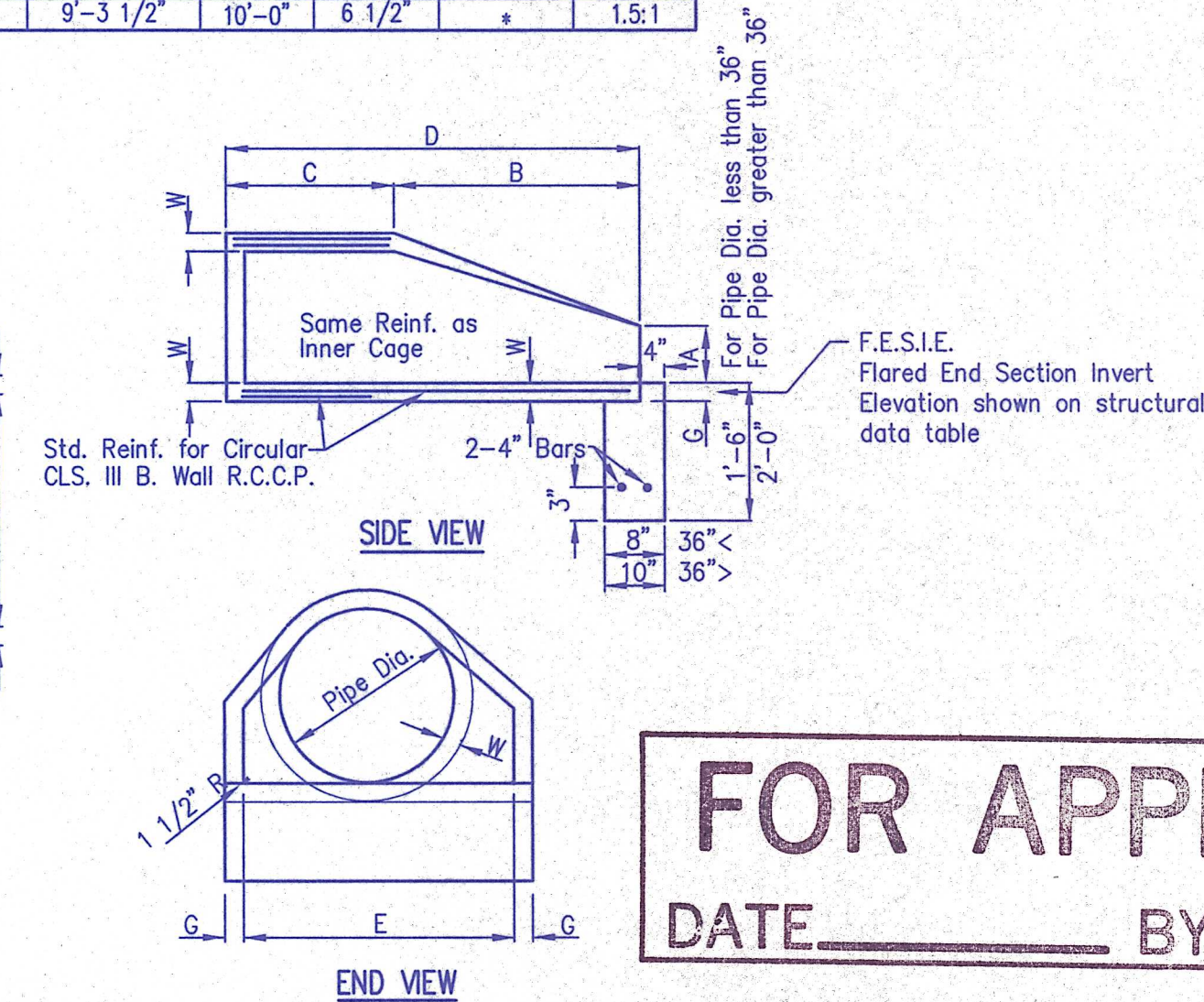
PIPE DIA.	WGT. (LBS)	WALL	A	B	C	D	E	G	R	SLOPE
12"	530	2"	5"	2'-0"	4'-7/8"	6'-7/8"	2'-0"	2"	9"	2:1
15"	740	2 1/4"	6"	2'-3"	3'-10"	6'-1"	2'-6"	2 1/4"	11"	2:1
18"	990	2 1/2"	10"	2'-3"	3'-10"	6'-3"	3'-0"	2 1/2"	12"	2:1
21"	1280	2 3/4"	10"	2'-11"	3'-2"	6'-1"	3'-6"	2 3/4"	13"	2:1
24"	1520	3"	10"	3'-7 1/2"	2'-6"	6'-5"	4'-0"	3"	14"	2:1
27"	1930	3 1/4"	10 1/2"	4'-0"	2'-1 1/2"	6'-1 1/2"	4'-6"	3 1/4"	14 1/2"	3:1
30"	2190	3 1/2"	1'-0"	4'-6"	1'-7 3/4"	6'-1 3/4"	5'-0"	3 1/2"	15"	3:1
33"	3200	3 3/4"	1'-1 1/2"	4'-10 1/2"	3'-3 1/4"	8'-1 3/4"	5'-6"	3 3/4"	17 1/2"	3:1
36"	4100	4"	1'-3"	5'-3"	2'-10 3/4"	8'-1 3/4"	6'-0"	4"	20"	3:1
42"	5380	4 1/2"	1'-9"	5'-3"	2'-11"	8'-2"	6'-6"	4 1/2"	22"	3:1
48"	6550	5"	2'-0"	6'-0"	2'-2"	8'-2"	7'-0"	5"	22"	3:1
54"	8240	5 1/2"	2'-3"	5'-5"	2'-11"	8'-4"	7'-6"	5 1/2"	24"	2:1
60"	8730	6"	2'-11"	5'-0"	3'-3"	8'-3"	8'-0"	6"	*	2:1
66"	10710	6 1/2"	2'-6"	6'-0"	2'-3"	8'-3"	8'-6"	5 1/2"	*	2:1
72"	12520	7"	3'-0"	6'-6"	1'-9"	8'-3"	9'-0"	6"	*	1.86:1
78"	14770	7 1/2"	3'-0"	7'-8"	1'-9"	9'-3"	9'-6"	6 1/2"	*	1.82:1
84"	18160	8"	3'-0"	7'-6 1/2"	1'-9"	9'-3 1/2"	10'-0"	6 1/2"	*	1.5:1



### Concrete End Section

5005.dwg Date: 5-16-98

NO SCALE



**FOR APPROVAL**  
DATE \_\_\_\_\_ BY \_\_\_\_\_

MAR 05 1998

### Notes

For Area Inlet in pavement East Jordan #8308 casting or equal w/ type M grate. For area inlet in non-paved areas: East Jordan #6500 casting, or equal, with adapter ring.

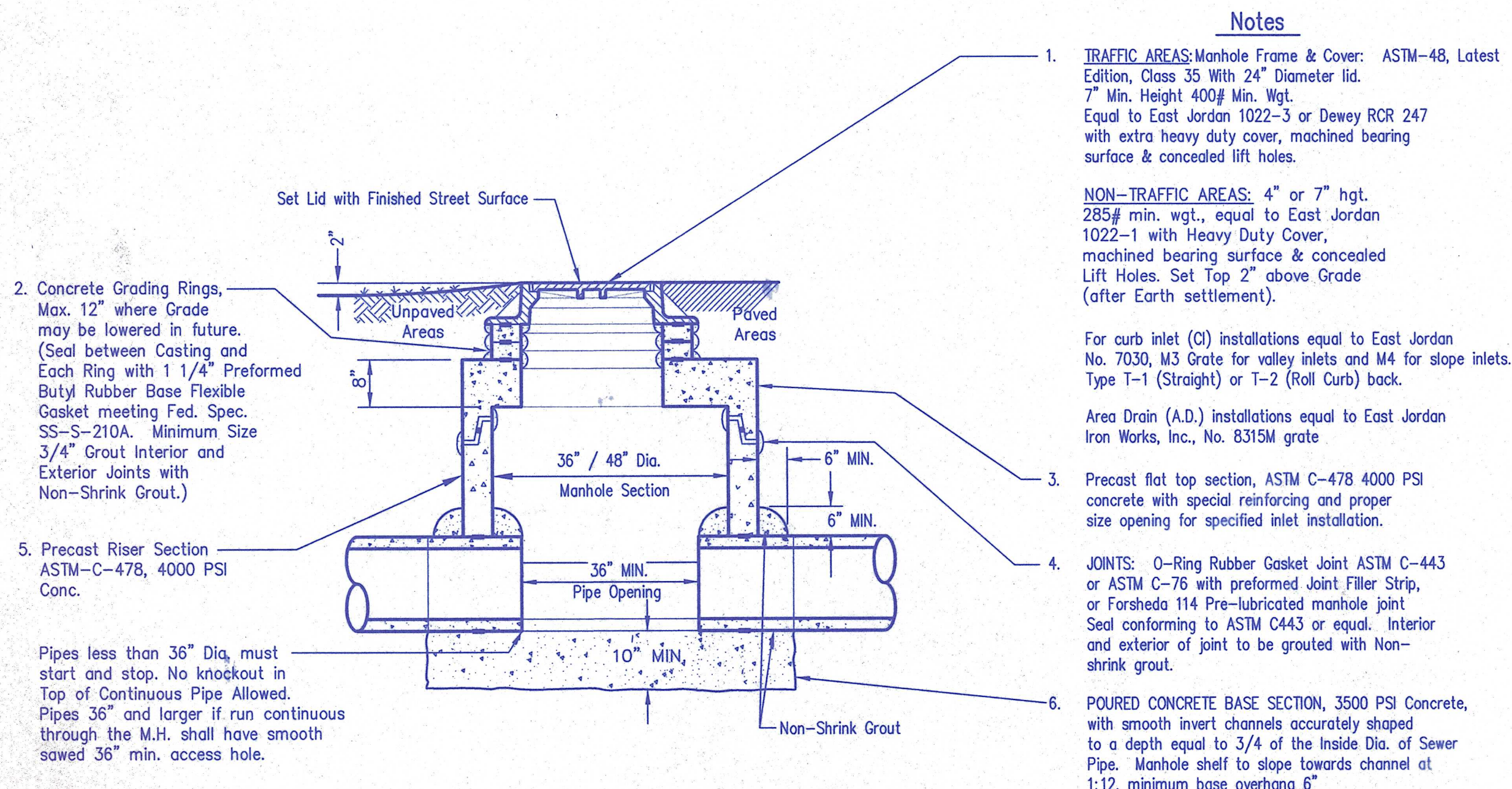
For Manhole East Jordan #8308 casting with Type A solid cover or equal. Contractor may substitute East Jordan #1022 casting with Type A solid cover, or equal, with adapter ring.

All connecting pipes shall be grouted with a high strength non-shrink grout.

Precast inlets shall conform to ASTM C-478

Reinforcement shall be 3" x 6" W3.0xW2.0 wire fabric for precast units

The inlet shall be backfilled with "B" Borrow and mechanically compacted in 6" lifts to 95% of standard density ASTM 698



### Shallow Storm Manhole, Inlet or Area Drain

Scale: 1/2" = 1'-0"

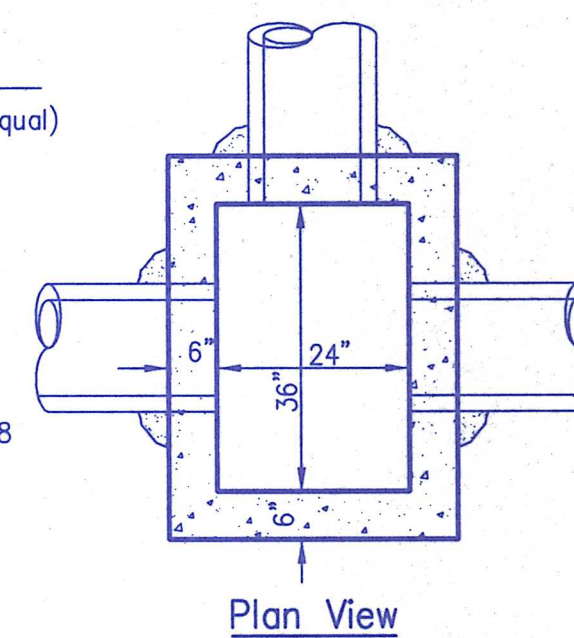
### Notes

East Jordan Iron Works, Inc. (or approved equal) NO. 7030 catch basin curb inlet, with M2 grate for valley inlets or M4 grate for slope inlets. Type T-1 back for straight curbs Type T-2 back for roll curbs

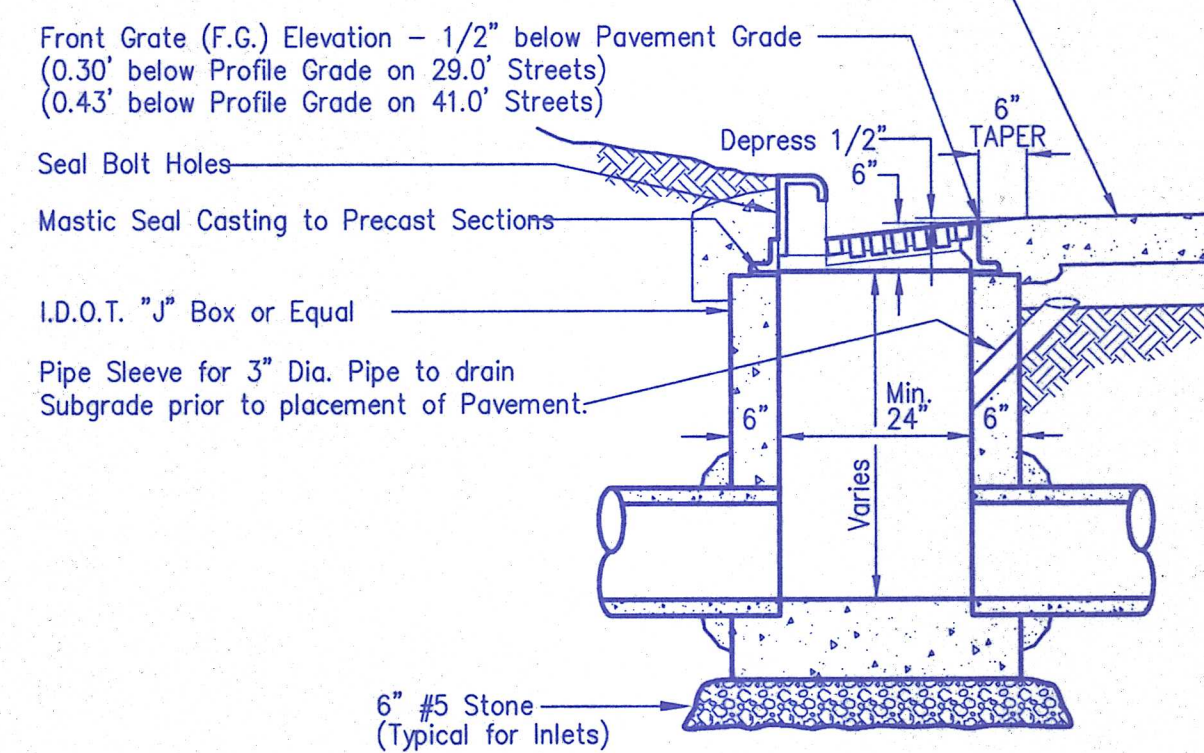
All connecting pipes shall be grouted with a high strength non-shrink grout.

Precast units shall conform to ASTM C-478

The inlet shall be backfilled with "B" Borrow and mechanically compacted in 6" lifts to 95% of standard density ASTM-698



Plan View

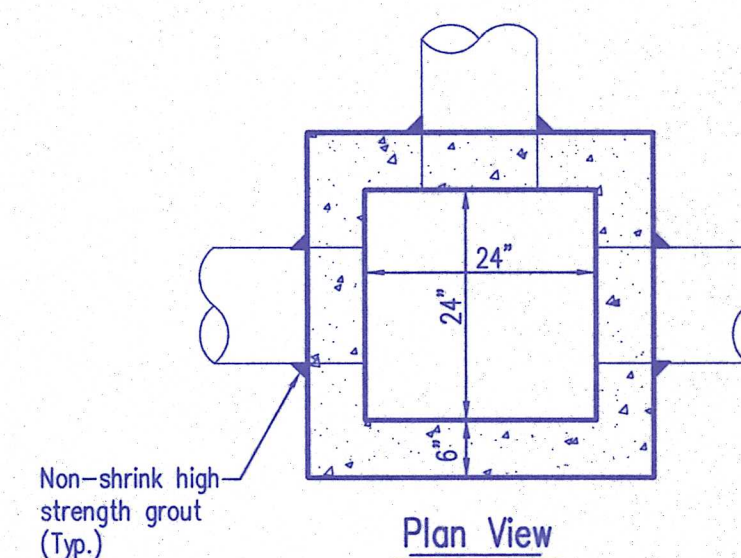


Section

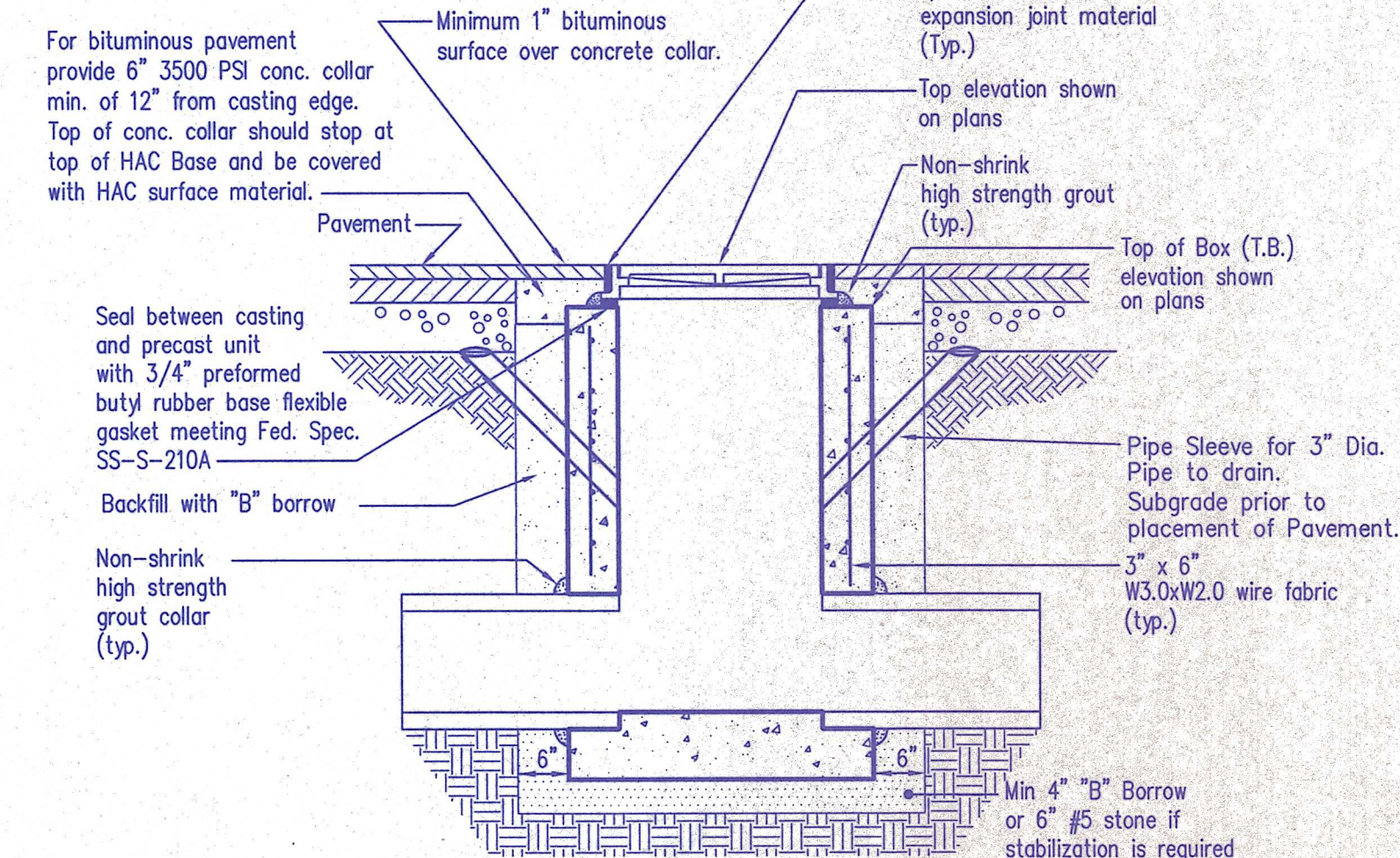
### Curb Inlet

5004.dwg Date: 09-10-98

Scale: 1/2" = 1'-0"



Plan View



Section

### Precast "A" Box

5017.dwg Date: 2-06-97

NO SCALE

**Morley and Associates, Inc.**  
Consulting Engineers/Surveyors/Architects  
600 S.E. 6th Street  
Evansville, Indiana 47713  
(812) 464-8686

All ideas, designs, calculations, and arrangements indicated or represented by this drawing are owned by and the property of Morley and Associates, Inc. No part of this drawing, in design, calculations, or arrangements shall be used by or disclosed to any person, firm, or corporation for any purpose whatsoever without the written permission of Morley and Associates, Inc. Written dimensions on these drawings shall have precedence over scale dimensions. Scale dimensions shall be used only in the event of a discrepancy between the two. The job of Morley and Associates, Inc. must be notified of any variations from the dimensions and conditions shown by these drawings.

Revisions	Description	Date	By

DAVID W. SCHMIDT  
REGISTERED  
No. 19500175  
STATE OF  
INDIANA  
PROFESSIONAL ENGINEER

Project: Winstead Place Subdivision  
Sheet Title: Storm Sewer Details  
Scale: As Shown  
Designed By: J.E.M. Job Number: 87-3724-1  
Drawn By: J.E.M. Date: 2/18/98  
Checked By: Flanome 37240.TLS.DWG  
Sheet Number: 10 of 12