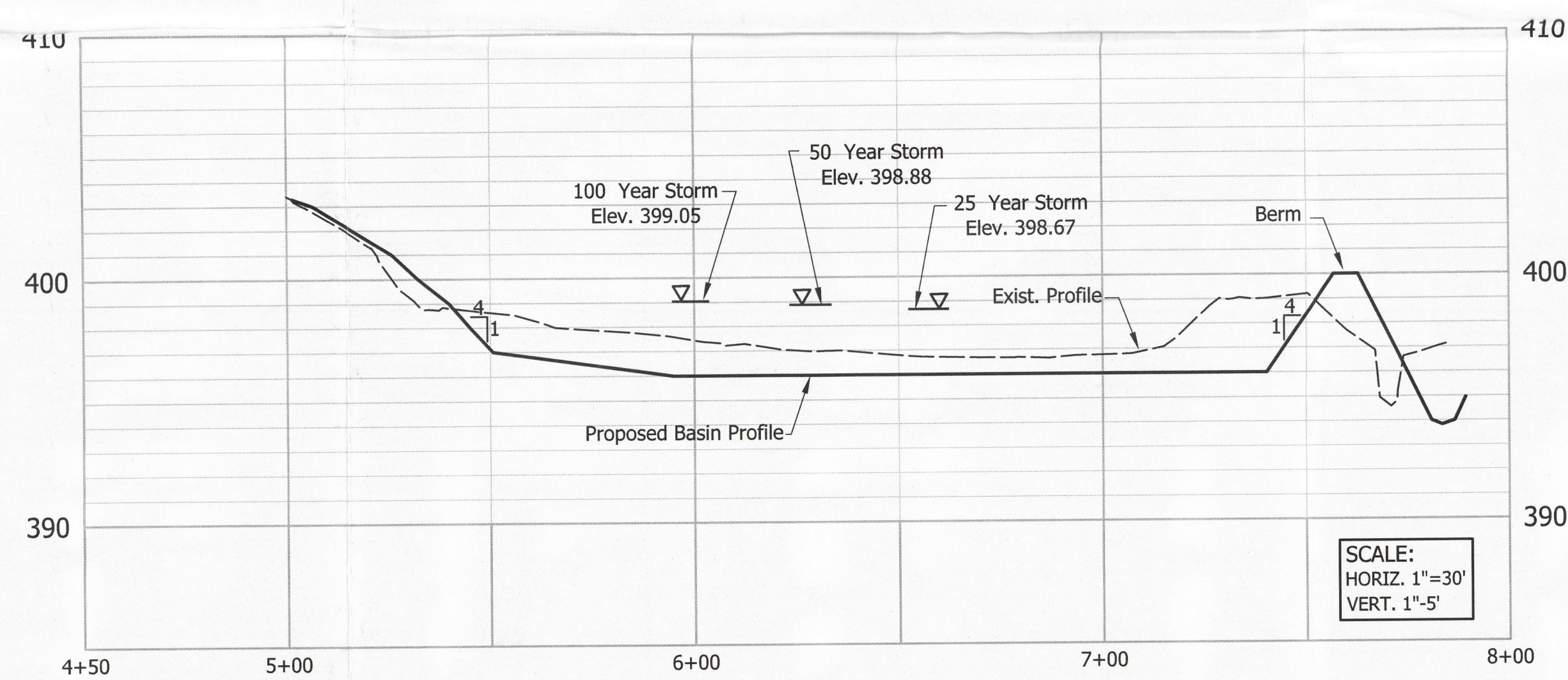
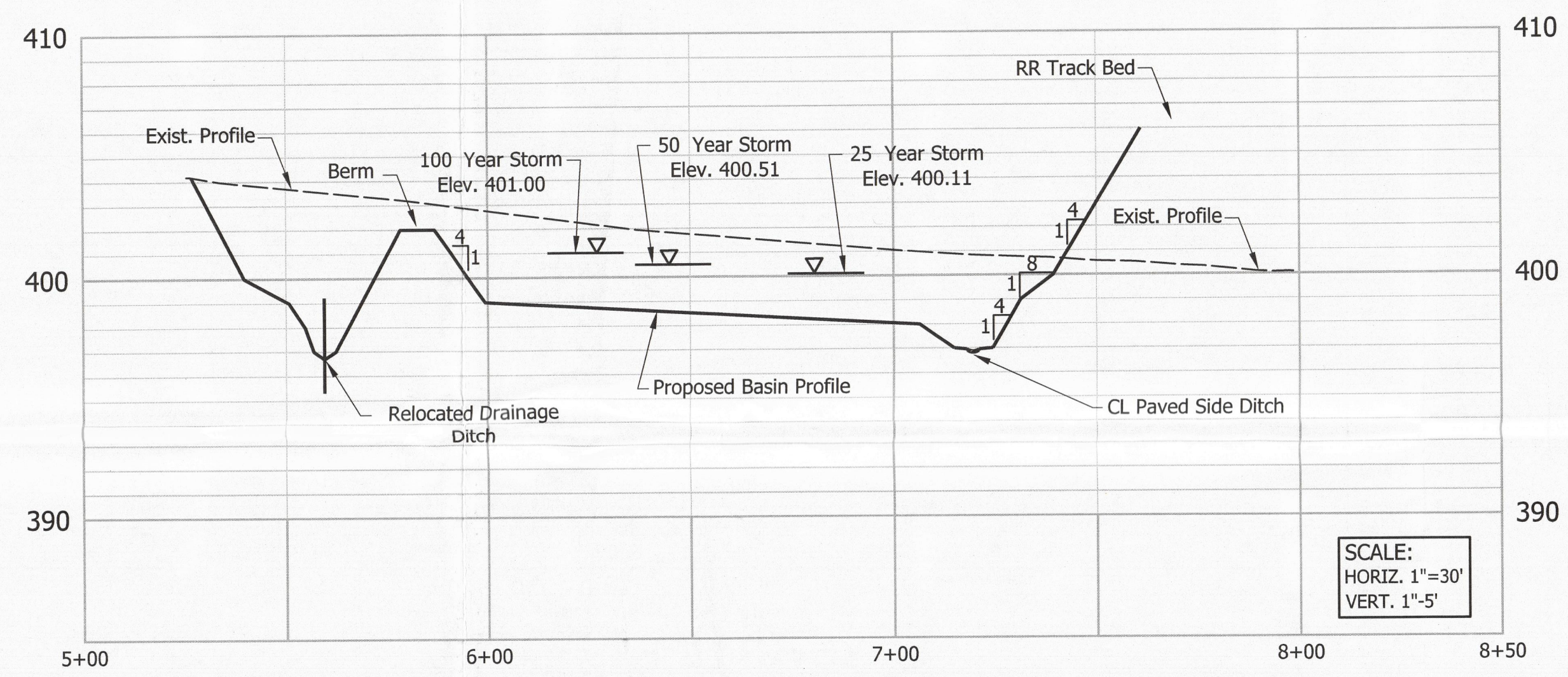


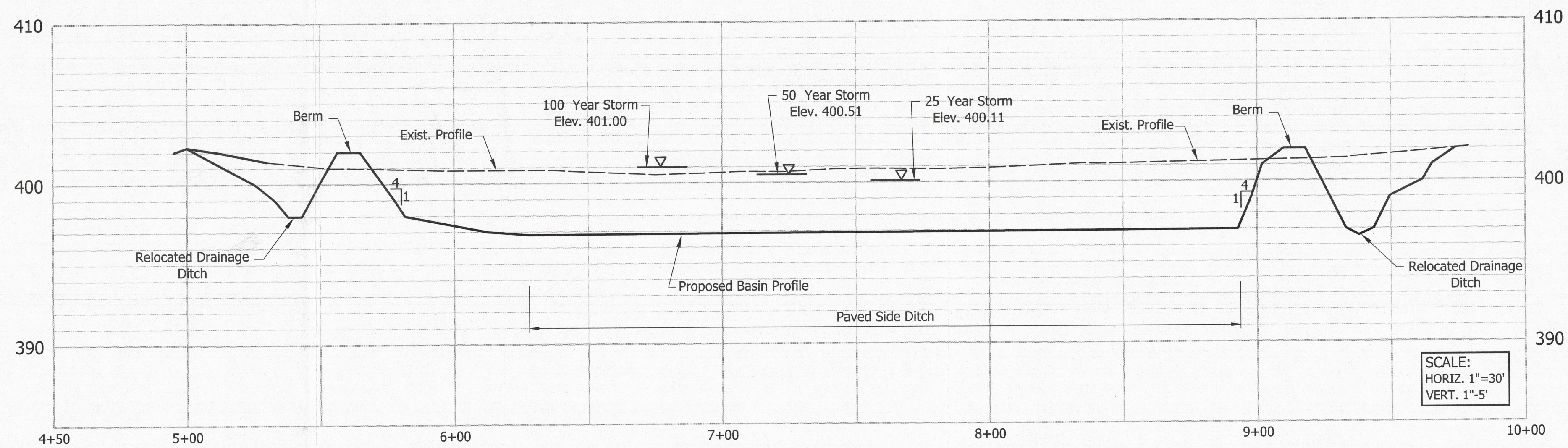
BASIN EAST PROFILE D-D



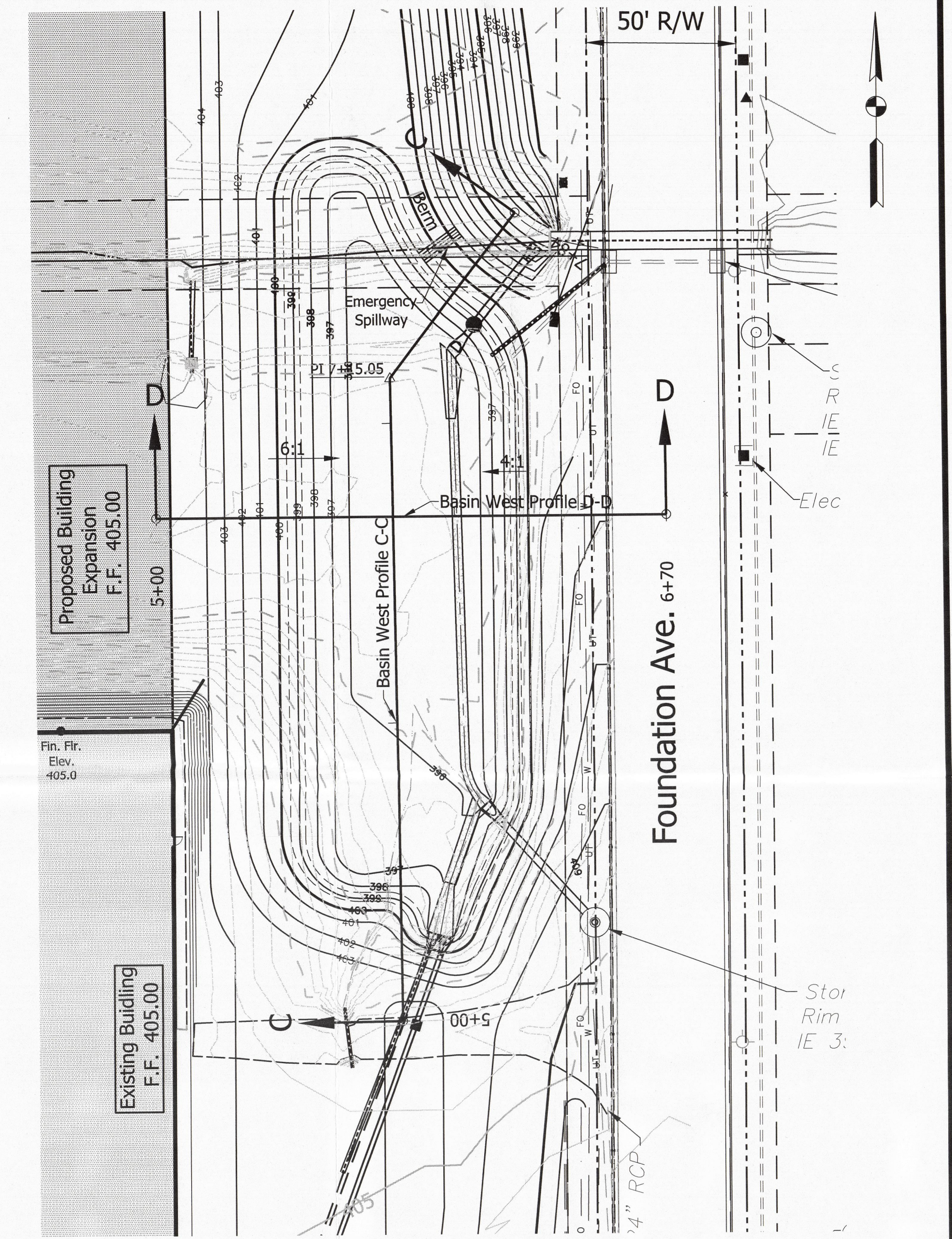
BASIN EAST PROFILE C-C



BASIN WEST PROFILE B-B



BASIN WEST PROFILE A-A



BASIN EAST

SEED MIXTURE FOR BASIN EAST AND WEST
 Kentucky 31 Fescue @ 400 lb./acre
 Fertilizer @ 800 lb./acre
 See Erosion Control Plans for additional bank stabilization measures.

NOTE: FOR BASIN EAST AND WEST
 No tree limbs, trunks, refuse from legally burnt vegetation, nor construction waste, demolition materials, or other man made material may be buried within the area in which the impounding structure will be located.
 Certain natural materials such as large rocks may be located in the bottom of wet basins in order to provide fish habitat breeding areas provided that such materials are not included within the calculations for required storage volumes and will not block outlet structures.

APPENDIX A-4

REVISIONS		
NO.	DATE	DESCRIPTION

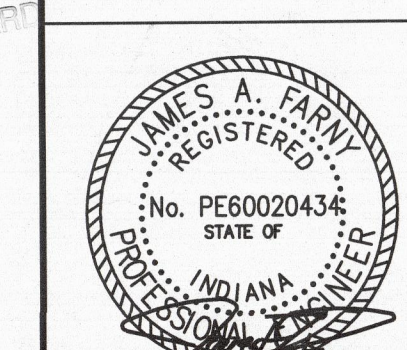
LOCHMUELLER GROUP
 6200 Vogel Road
 Evansville, Indiana 47715
 Phone: 812.479.6200
 Toll Free: 800.423.7411

**LOTS 8 & 9
 VANDERBURGH INDUSTRIAL PARK
 EVANSVILLE, INDIANA**

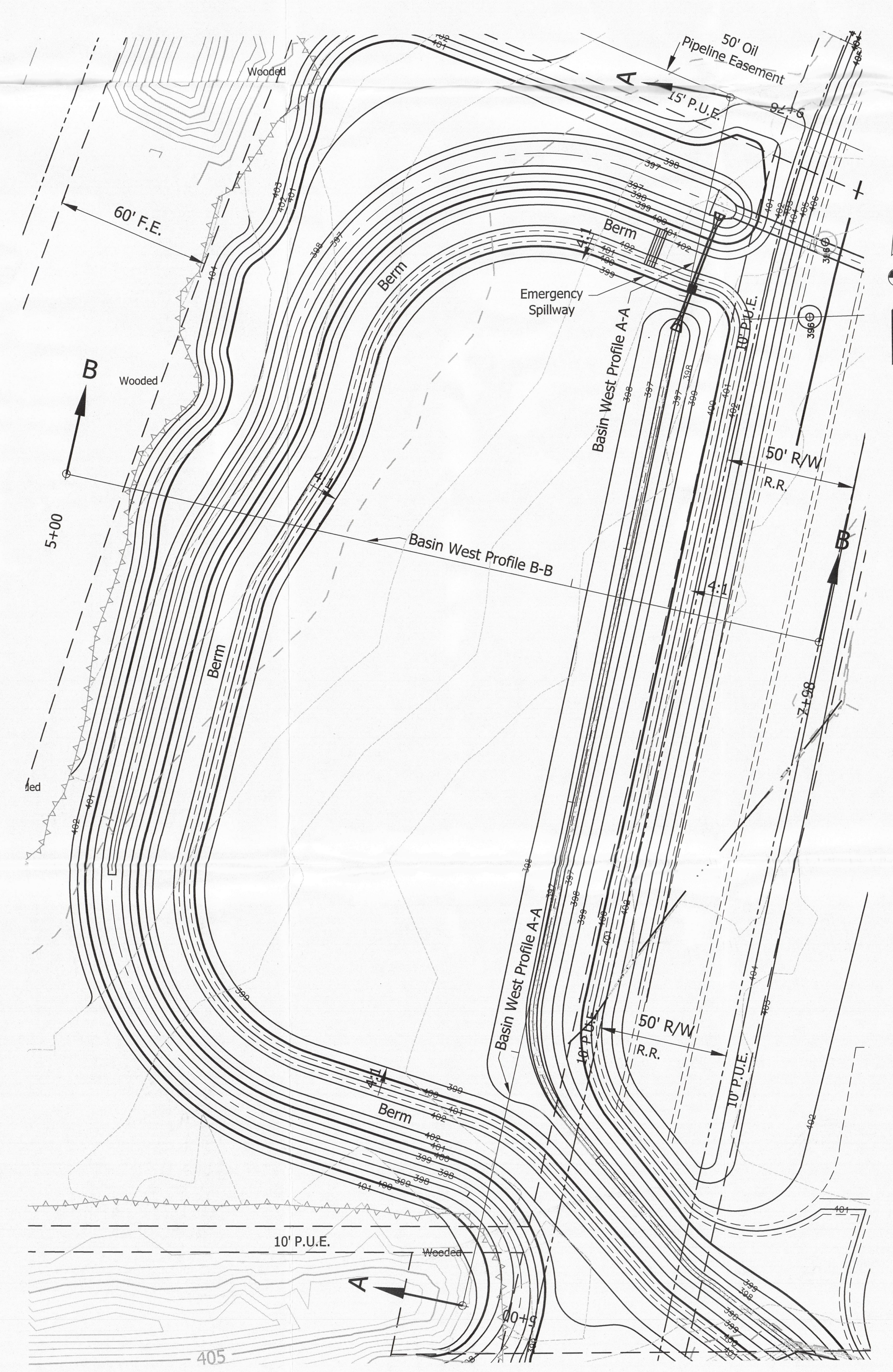
SHEET TITLE:
STORM RETENTION BASINS

APPROVED
 JUN 13 2017

HORIZ. SCALE 1"=30'	LOCH. GROUP PROJ. 117-0048
VERT. SCALE 1"=5'	PROJECT --
DRAWN BY D.A.G.	DATE: 05/24/17
DESIGNED BY J.A.F.	ISSUED: --
SHEET NO.:	



C5.2



BASIN WEST