

**GENERAL NOTES**

- THE SUBJECT PROPERTY IS ZONED M-2.
- SANITARY SEWER, WATER, GAS, AND ELECTRIC IS CURRENTLY AVAILABLE AT THE SITE.
- THERE ARE 29 TOTAL AUTOMOBILE PARKING SPACES, INCLUDED 2 HANDICAP SPACES WITH 1 HANDICAP WALK SPACE AND NO COMPANY VEHICLE.
- EACH WORK SHIFT WILL HAVE APPROXIMATELY 20 EMPLOYEES AT THE LARGEST SHIFT WITH 40 EMPLOYEES TOTAL.
- ALL DIMENSIONING SHOWN IS MEASURED FROM FROM FACE OF CURB TO FACE OF CURB OR TO EDGE OF LOT.
- THE TOTAL BUILDING HEIGHT IS 35' ABOVE FLOOR ELEVATION (436.0).
- THE BUILDING IS A ONE-STORY STRUCTURE.
- ALL CONCRETE JOINTS, UNLESS OTHERWISE INDICATED, ARE CONTRACTION JOINTS.

**LEGEND**

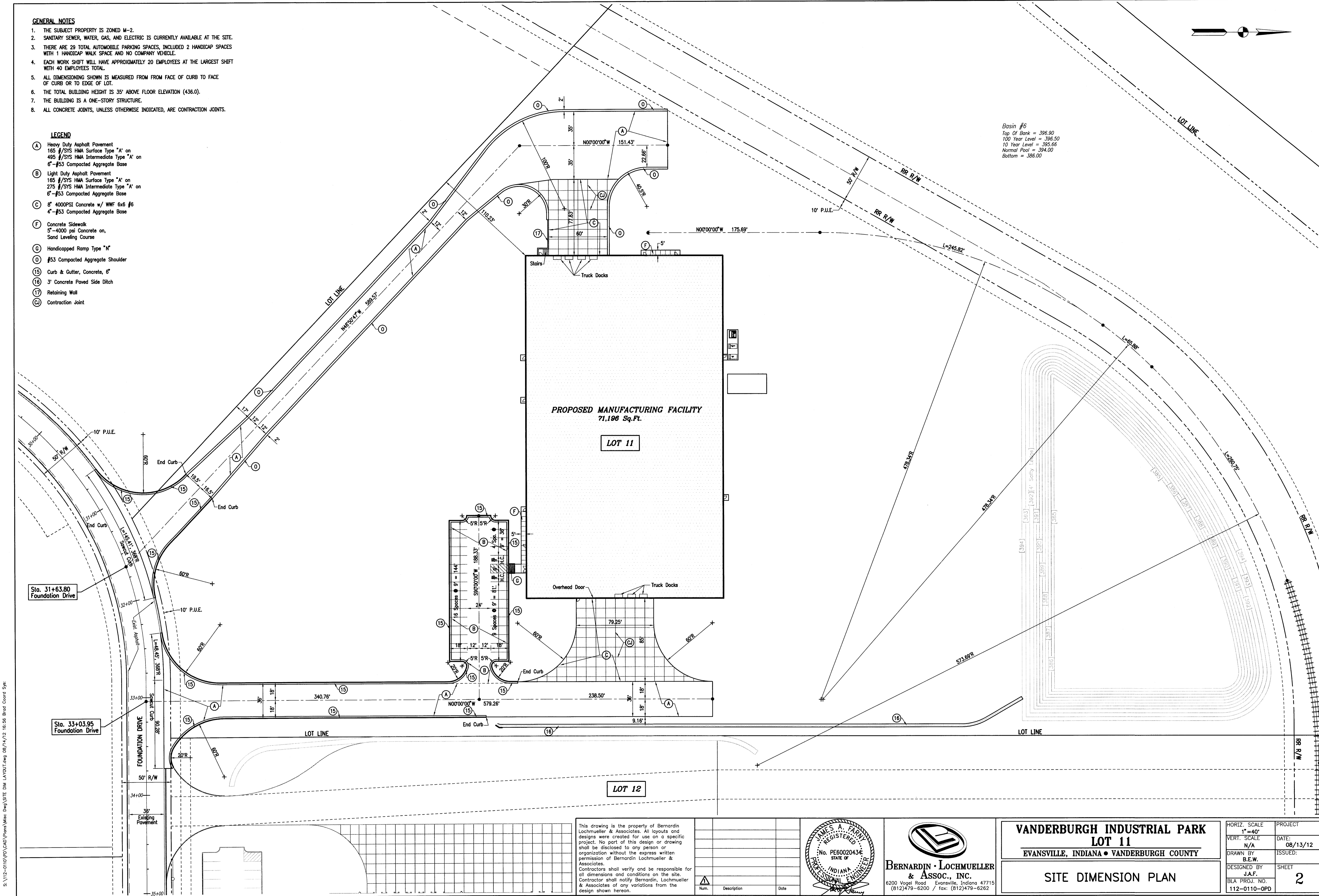
- (A) Heavy Duty Asphalt Pavement  
165 #/SYS HMA Surface Type "A" on  
495 #/SYS HMA Intermediate Type "A" on  
6"-#53 Compacted Aggregate Base
- (B) Light Duty Asphalt Pavement  
165 #/SYS HMA Surface Type "A" on  
275 #/SYS HMA Intermediate Type "A" on  
6"-#53 Compacted Aggregate Base
- (C) 6" 4000PSI Concrete w/ WWF 6x6 #6  
4"-#53 Compacted Aggregate Base
- (F) Concrete Sidewalk  
5"-4000 psi Concrete on,  
Sand Levelling Course
- (G) Handicapped Ramp Type "N"
- (O) #53 Compacted Aggregate Shoulder
- (15) Curb & Gutter, Concrete, 6"
- (16) 3' Concrete Paved Side Ditch
- (17) Retaining Wall
- (C) Contraction Joint

Basin #6  
Top Of Bank = 396.90  
100 Year Level = 396.50  
10 Year Level = 395.66  
Normal Pool = 394.00  
Bottom = 386.00

**PROPOSED MANUFACTURING FACILITY**  
71,196 Sq.Ft.

**LOT 11**

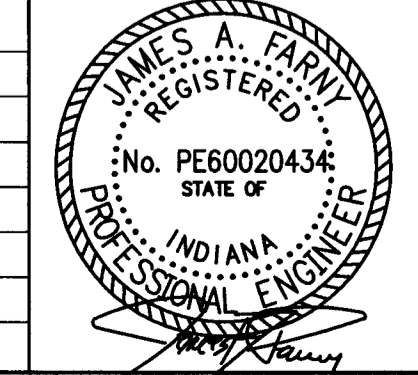
**LOT 12**



S:\112-0110\10\CAD\Drawings\Misc Drawings\SITE DIM LAYOUT.dwg 08/14/12 16:58 Blain Coord Sys

This drawing is the property of Bernardin Lochmueller & Associates. All layouts and designs were created for use on a specific project. No part of this design or drawing shall be disclosed to any person or organization without the express written permission of Bernardin Lochmueller & Associates. Contractors shall verify and be responsible for all dimensions and conditions on the site. Contractor shall notify Bernardin, Lochmueller & Associates of any variations from the design shown hereon.

Num.	Description	Date



**BERNARDIN · LOCHMUELLER & ASSOC., INC.**  
6200 Vogel Road Evansville, Indiana 47715  
(812)479-6200 / fax: (812)479-6262

**VANDERBURGH INDUSTRIAL PARK**  
**LOT 11**  
EVANSVILLE, INDIANA • VANDERBURGH COUNTY

---

**SITE DIMENSION PLAN**

HORIZ. SCALE	PROJECT
1"=40'	1"=40'
VERT. SCALE	DATE:
N/A	08/13/12
DRAWN BY	ISSUED:
B.E.W.	
DESIGNED BY	SHEET
J.A.F.	2
BLA PROJ. NO.	
112-0110-OPD	