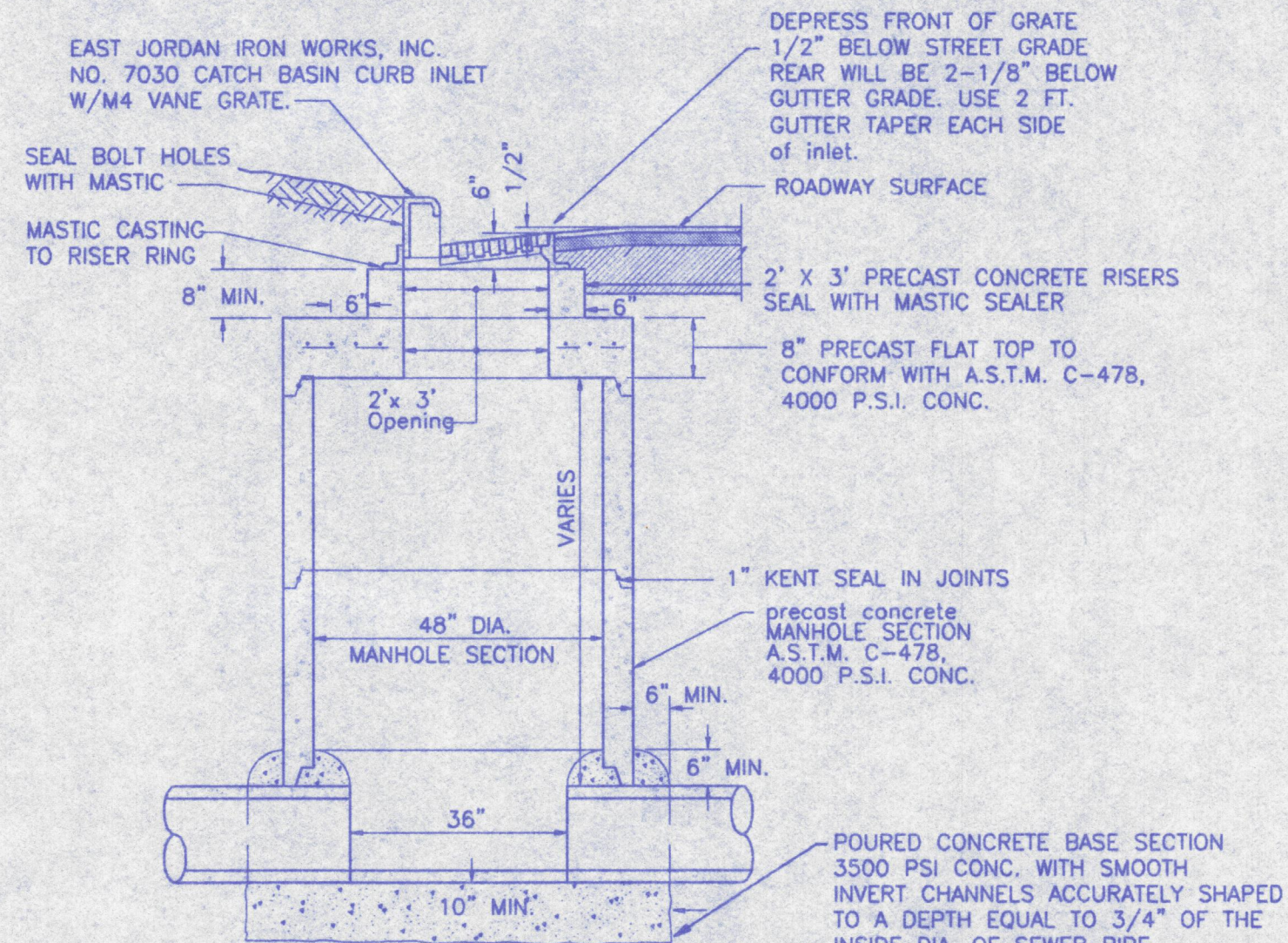


**DIMENSIONS**

DIA. (IN.)	WGT. (LBS.)	WALL	A	B	C	D	E	G	R	SLOPE
12"	530	2"	5"	1'-10"	4'-3"	6'-1"	2'-0"	2"	9"	2.4:1
15"	740	2-1/4"	7"	2'-3"	4'-0"	6'-3"	2'-6"	2 1/2"	11"	2.4:1
18"	990	2-1/2"	11"	2'-1"	4'-1"	6'-2"	3'-0"	2 1/2"	12"	2.4:1
21"	1280	2-3/4"	11"	2'-9"	3'-6"	6'-4"	3'-0"	2 3/4"	13"	2.4:1
24"	1520	3"	12"	3'-7"	2'-8"	6'-3"	4'-0"	3"	14"	2.5:1
30"	2190	3-1/2"	1'-2"	4'-6"	1'-8"	6'-0"	5'-0"	3 1/2"	15"	2.5:1
36"	4100	4"	1'-3"	5'-2"	2'-9"	6'-1"	6'-0"	4"	20"	2.5:1
42"	5380	4-1/2"	1'-8"	5'-3"	2'-11"	6'-2"	6'-6"	4 1/2"	22"	2.5:1

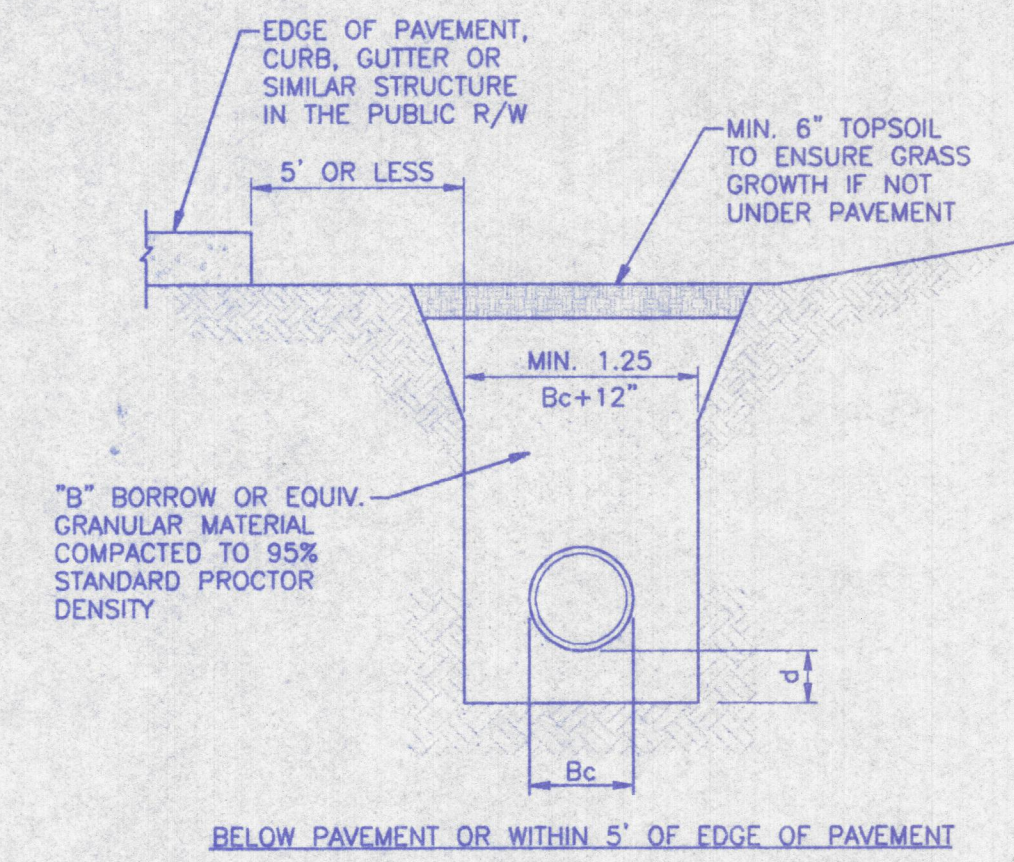
**CONCRETE END SECTION DETAIL**

Not To Scale



**MANHOLE AND CURB INLET**

For Structures #156, #158, #159, #177 & #178A  
Not To Scale

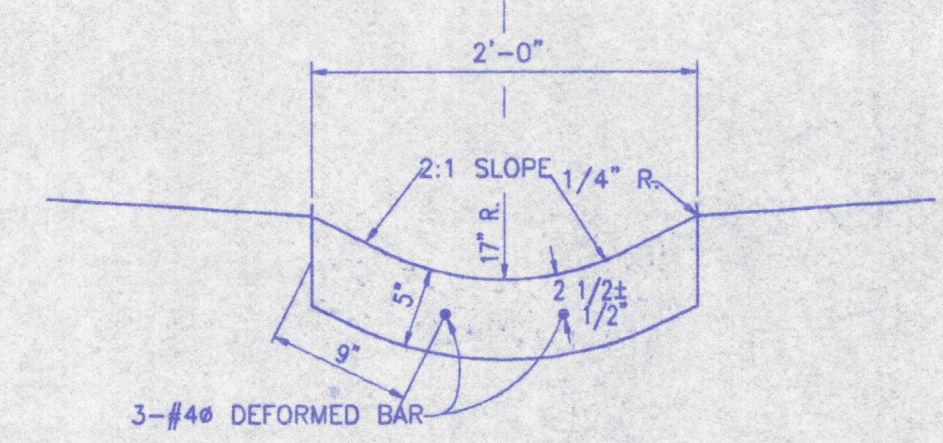


**DEPTH OF BEDDING MATERIAL BELOW PIPE**

D	(d) MIN.
27\"/>	

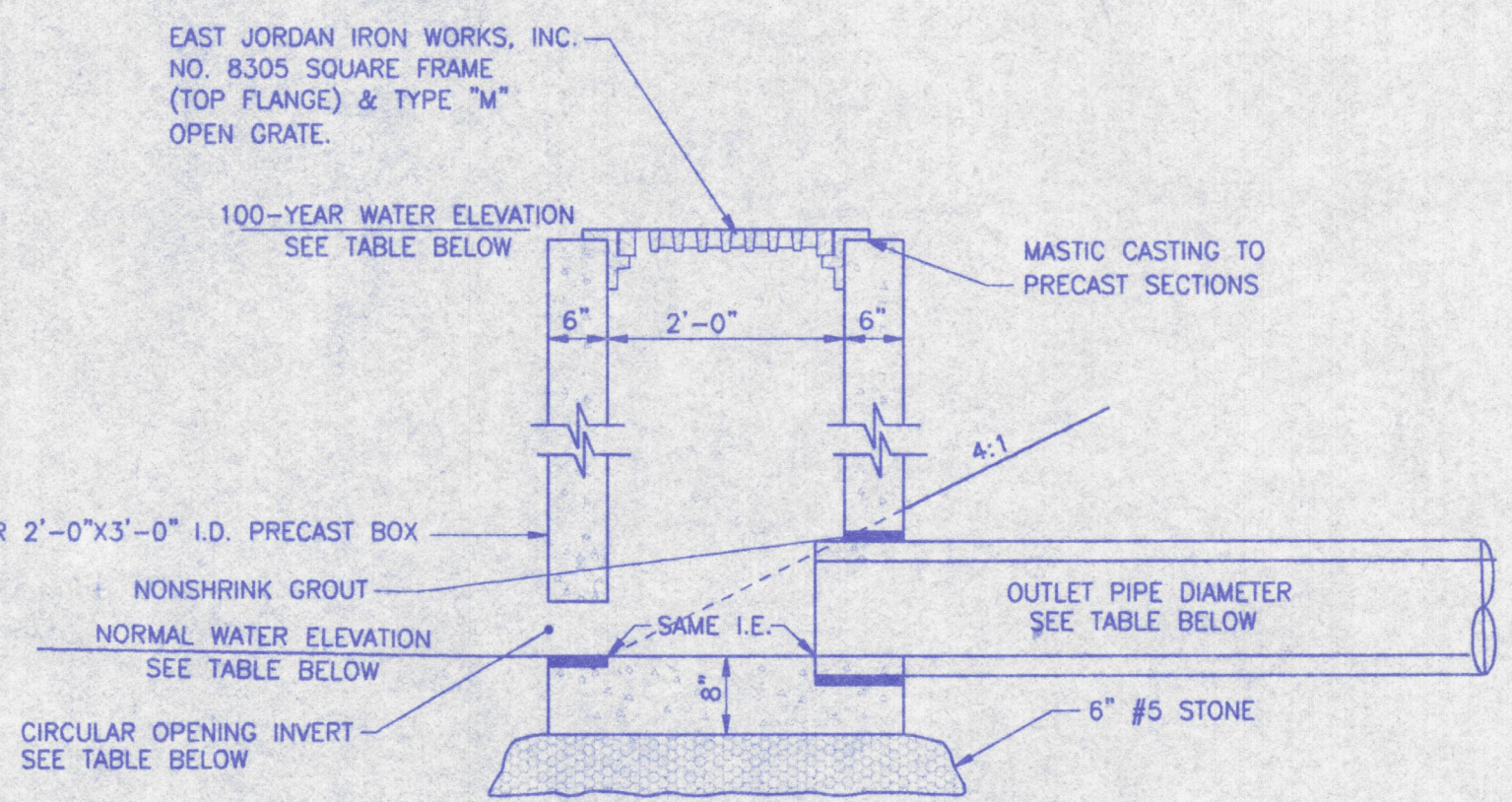
**NOTES:**  
ALL BEDDING & INITIAL BACKFILL SHALL BE INSTALLED IN 6\"/>

**LEGEND**  
Bc = OUTSIDE DIAMETER  
D = INSIDE DIAMETER  
d = DEPTH OF BEDDING MATERIAL BELOW PIPE



**PAVED DITCH**

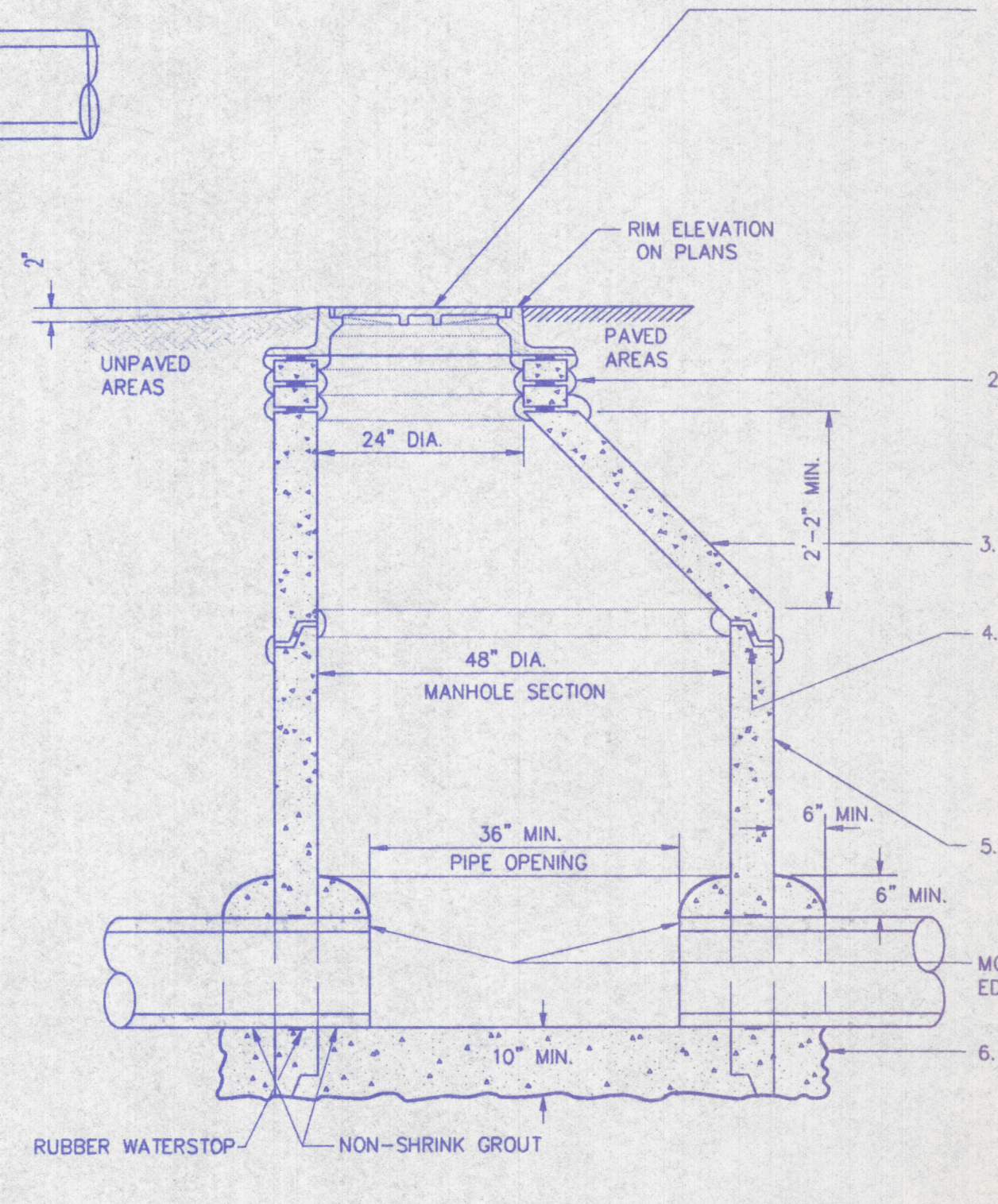
Not To Scale



**OUTLET CONTROL STRUCTURE**

Not To Scale

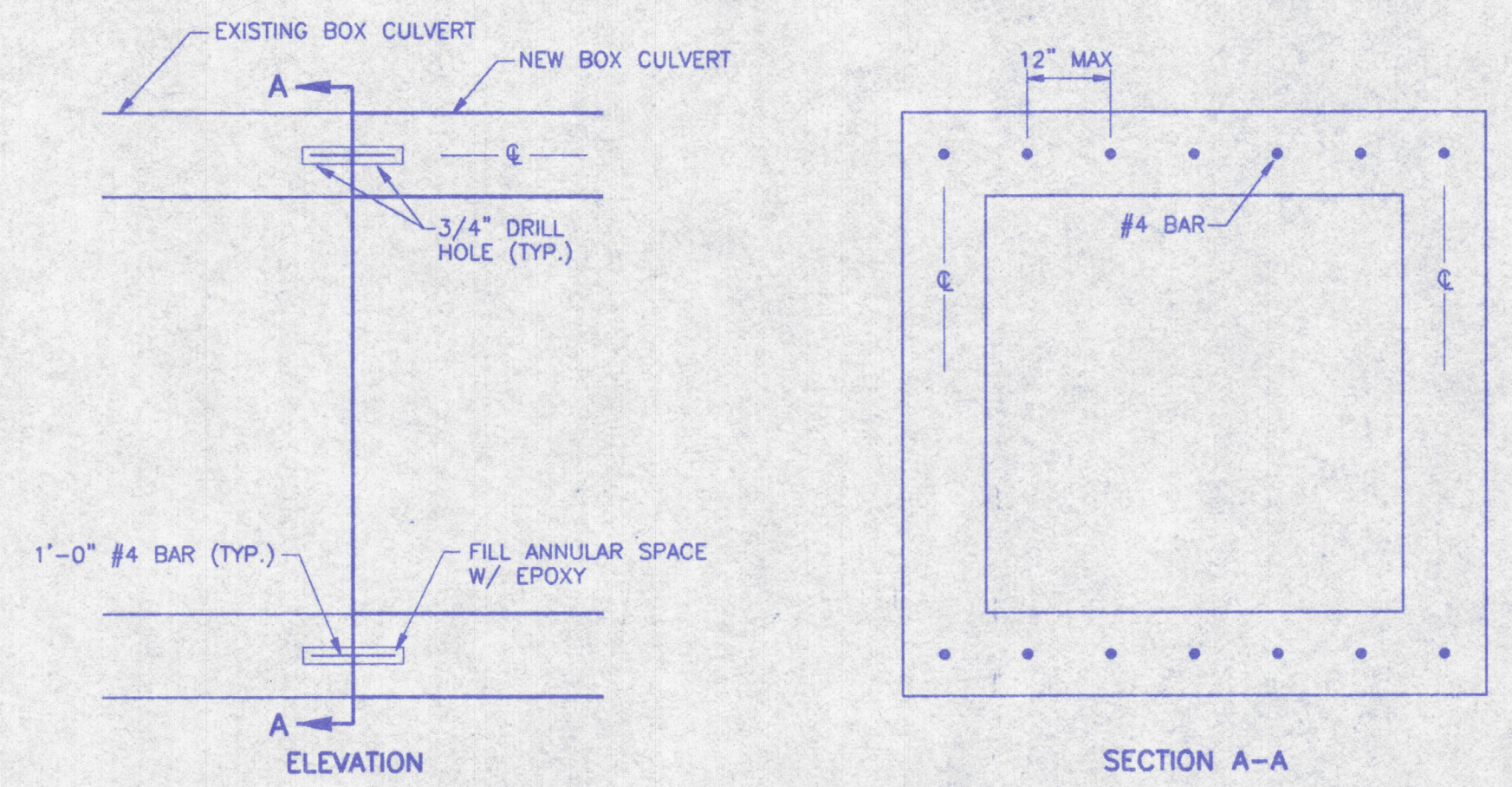
OUTLET CONTROL STR. NO.	NORMAL WATER ELEV.	100-YEAR WATER ELEV.	CIRCULAR OPENING INVERT	CIRCULAR OPENING DIAMETER	OUTLET PIPE DIAMETER
1	395.00	399.48	395.00	22.20"	21"
2	404.00	409.43	404.00	10.80"	15"
3	395.75	399.00	395.75	13.80"	15"
4	393.50	398.64	393.50	15.00"	18"
6	394.00	396.86	394.00	15.00"	24"
7	392.50	398.28	392.50	16.08"	18"
8	393.21	396.23	393.21	13.20"	24"



**STORM SEWER MANHOLE**

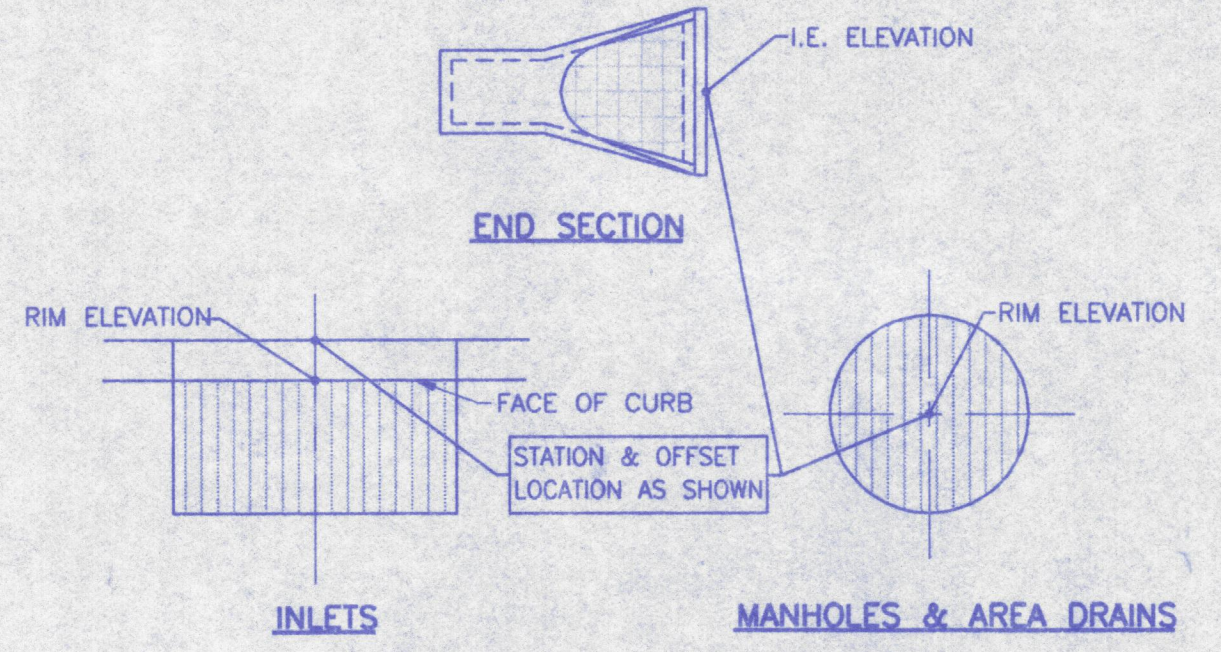
Not To Scale

- NOTES**
- MANHOLE FRAME & COVER ASTM A-48, LATEST EDITION, CLASS 35 WITH 24\"/>

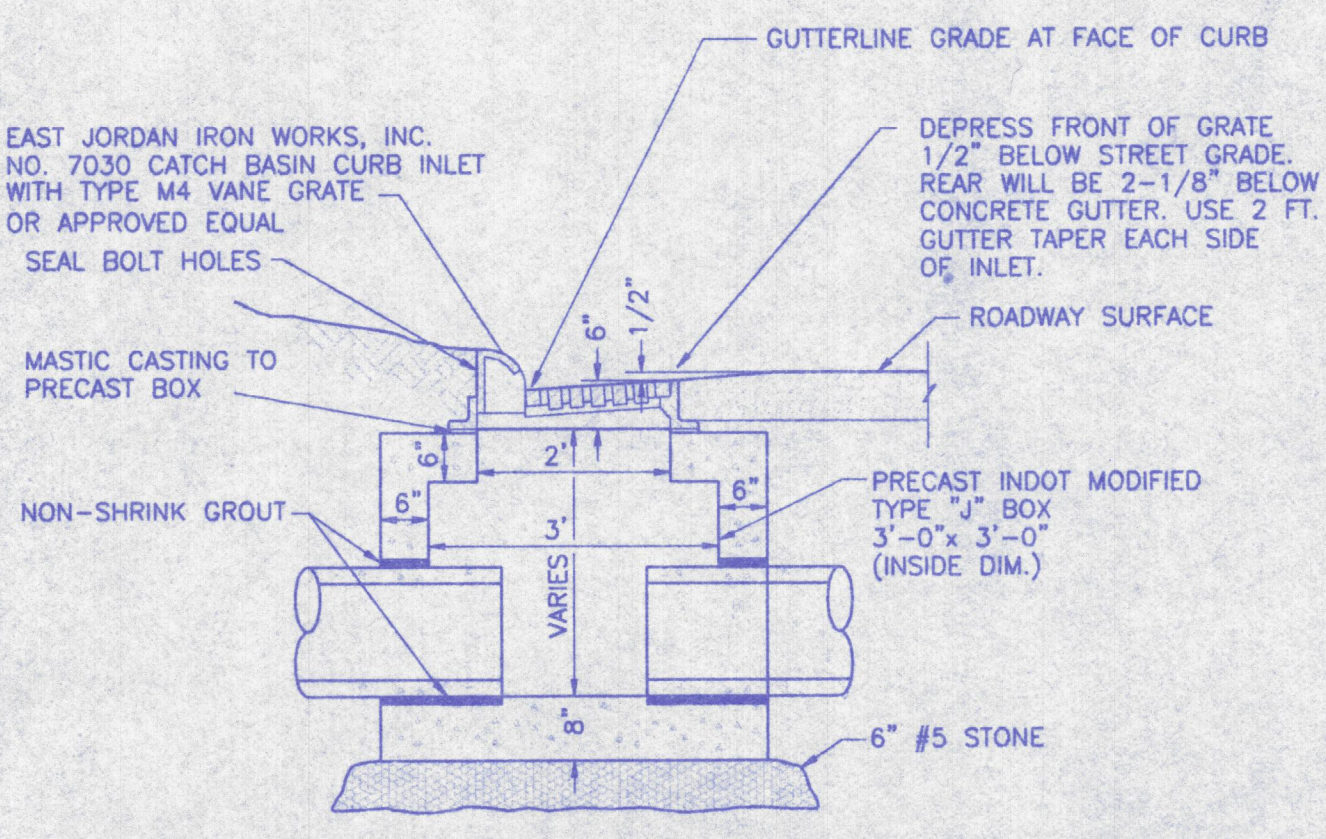


**BOX CULVERT CONNECTION DETAIL**

Not To Scale

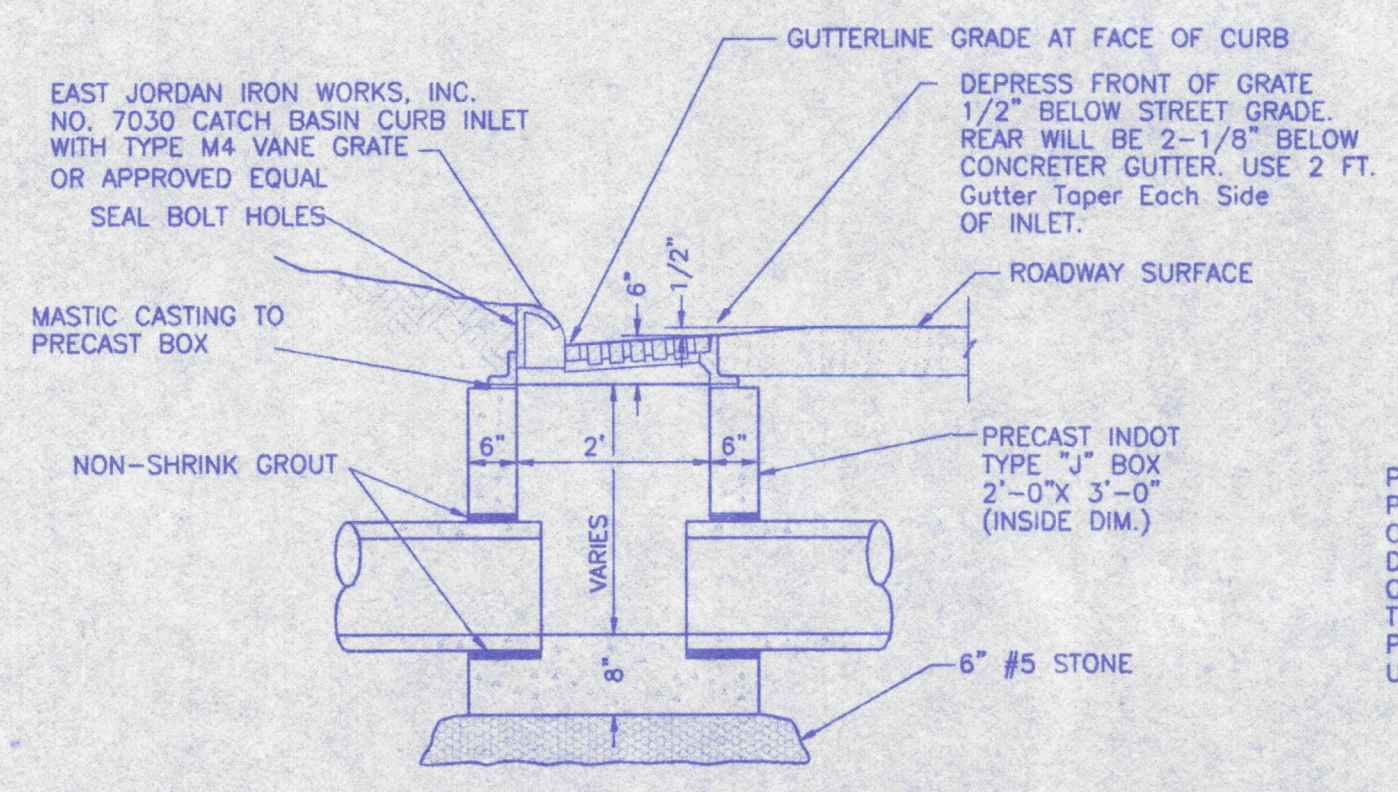


**STRUCTURE LOCATION DETAIL**



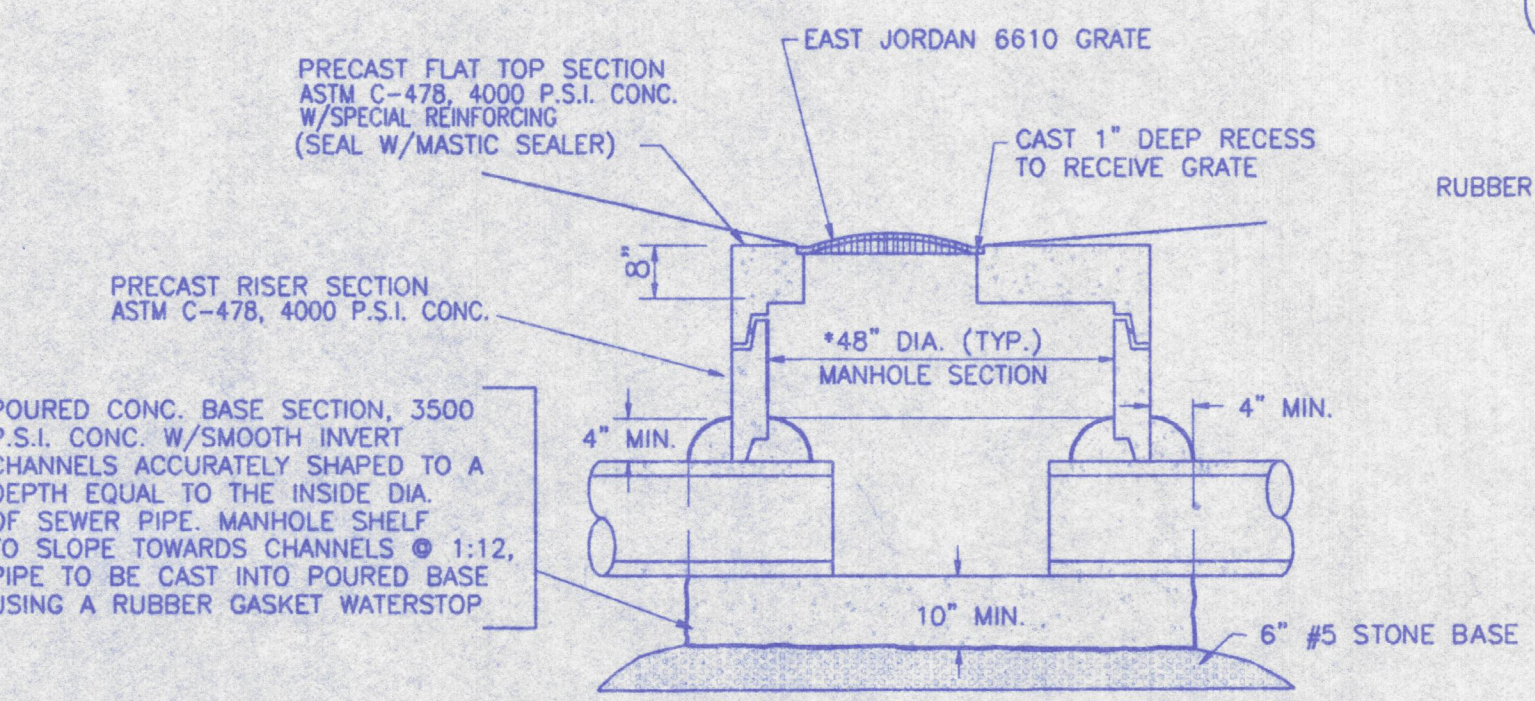
**PRECAST "J-10" CURB INLET**

For Pipe Sizes 21"-27"  
Not To Scale



**INLET TYPE "J-10" CURB INLET**

For Pipe Sizes 12"-18"  
Not To Scale



**SHALLOW STORM SEWER MANHOLE DETAIL**

Not To Scale

REVISION	NO.	DATE

**VANDEBURGH INDUSTRIAL PARK**  
STORM SEWER DETAILS  
FOR  
**EVANSVILLE INDUSTRIAL FOUNDATION**  
WANDERBURGH COUNTY, INDIANA

Prepared By: **BERNARDIN LOCHMUELLER & ASSOC., INC.**  
Planners - Engineers - Surveyors

DATE: 9/8/99  
PROJECT NO.: 199-0077 OPD  
ISSUED: FOR CONSTRUCTION

Professional Engineer Seal: **ERRY M. MADRAC**, No. 19900505, STATE OF INDIANA, REGISTERED PROFESSIONAL ENGINEER

38

S:\Projects\199-0077\Topic\Details.dwg 09/08/99 10:48 Paul