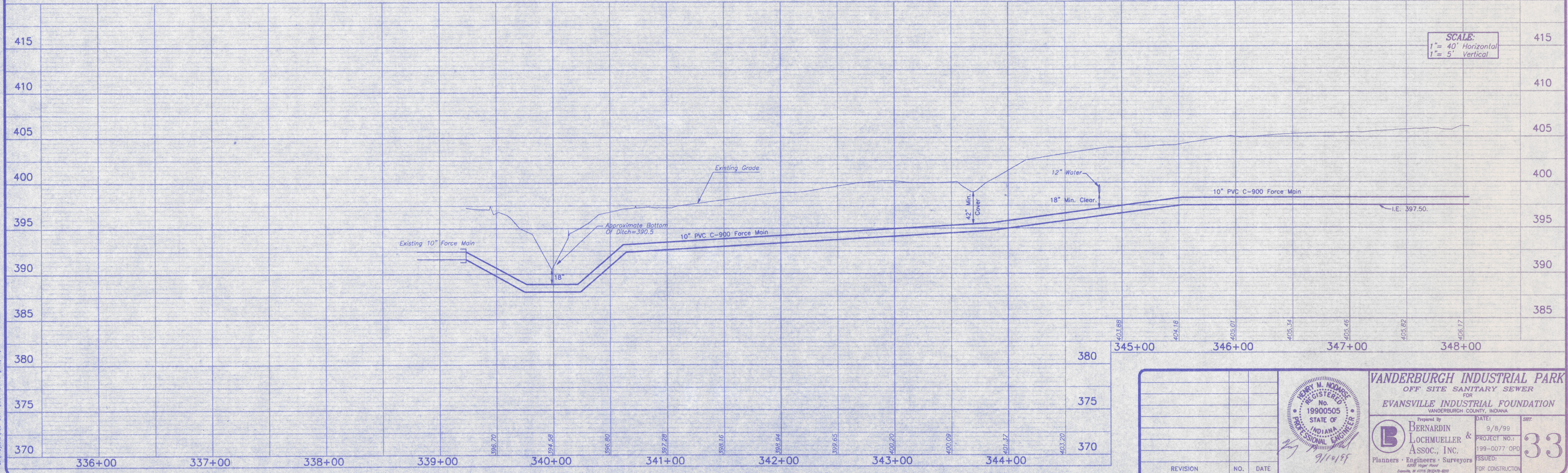


Scale: 1"=40'

TOPOGRAPHY ON THIS SHEET IS BASED ON AERIAL PHOTOGRAPHY PLANS DEVELOPED BY VANDERBURGH COUNTY.



SCALE:  
1" = 40' Horizontal  
1" = 5' Vertical

<b>VANDERBURGH INDUSTRIAL PARK</b> OFF SITE SANITARY SEWER FOR <b>EVANSVILLE INDUSTRIAL FOUNDATION</b> <small>VANDERBURGH COUNTY, INDIANA</small>		
Prepared By <b>BERNARDIN LOCHMUELLER &amp; ASSOC., INC.</b> <small>Planners • Engineers • Surveyors</small> <small>4209 Vogel Road</small> <small>Evansville, IN 47710 (812) 423-0100</small>	DATE: 9/8/99 PROJECT NO.: 199-0077 OPD ISSUED: FOR CONSTRUCTION	SHEET: <b>33</b>

S:\Projects\199-0077\locmuelm.dwg 09/08/99 13:36 Paul