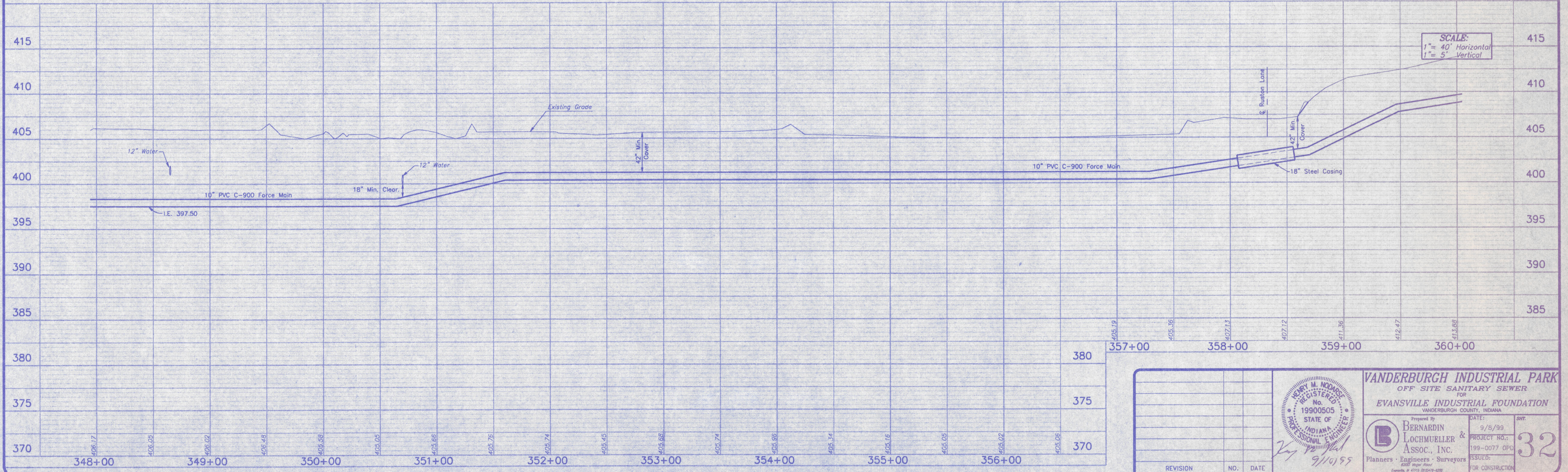




- NOTES:
1. ALL EXISTING CONFLICTING PAVEMENT MARKINGS SHALL BE REMOVED PRIOR TO PLACEMENT OF NEW PAVEMENT MARKINGS.
 2. ALL EXISTING CENTERLINE MARKINGS SHALL REMAIN IN PLACE.
 3. ALL PAVEMENT MARKINGS SHALL BE IN ACCORDANCE WITH THE INDIANA MANUAL ON UNIFORM TRAFFIC CONTROL DEVICES FOR STREETS AND HIGHWAYS.
 4. ALL WORK WITHIN THE S.R. 57 RUN SHALL FOLLOW THE 1999 INDOT STANDARD SPECIFICATIONS.
 5. FOR PAVEMENT SECTION AND STRIPING LEGEND, SEE SHEET 25.
 6. TOPOGRAPHY ON THIS SHEET IS BASED ON AERIAL PHOTOGRAPHY PLANS DEVELOPED BY VANDERBURGH COUNTY.



SCALE:
 1" = 40' Horizontal
 1" = 5' Vertical

		VANDERBURGH INDUSTRIAL PARK OFF SITE SANITARY SEWER FOR EVANSVILLE INDUSTRIAL FOUNDATION <small>VANDERBURGH COUNTY, INDIANA</small>	
Prepared by BERNARDIN LOCHMUELLER & ASSOC., INC. <small>Planners · Engineers · Surveyors</small>	DATE: 9/8/99 PROJECT NO.: 199-0077 OPD ISSUE: FOR CONSTRUCTION	32	

S:\Projects\199-0077\locmap2.dwg 09/08/99 14:15 Paul