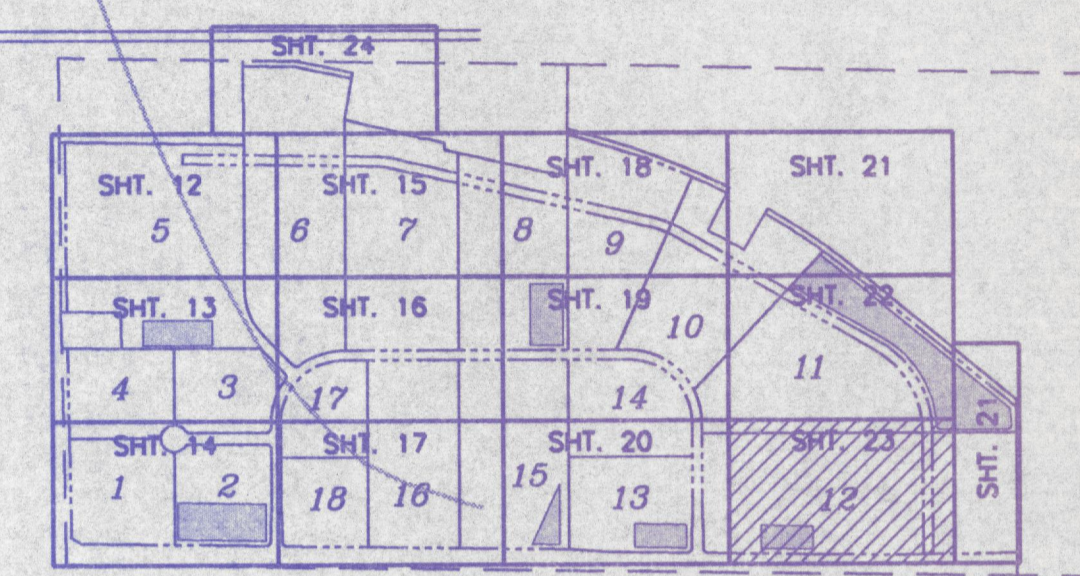


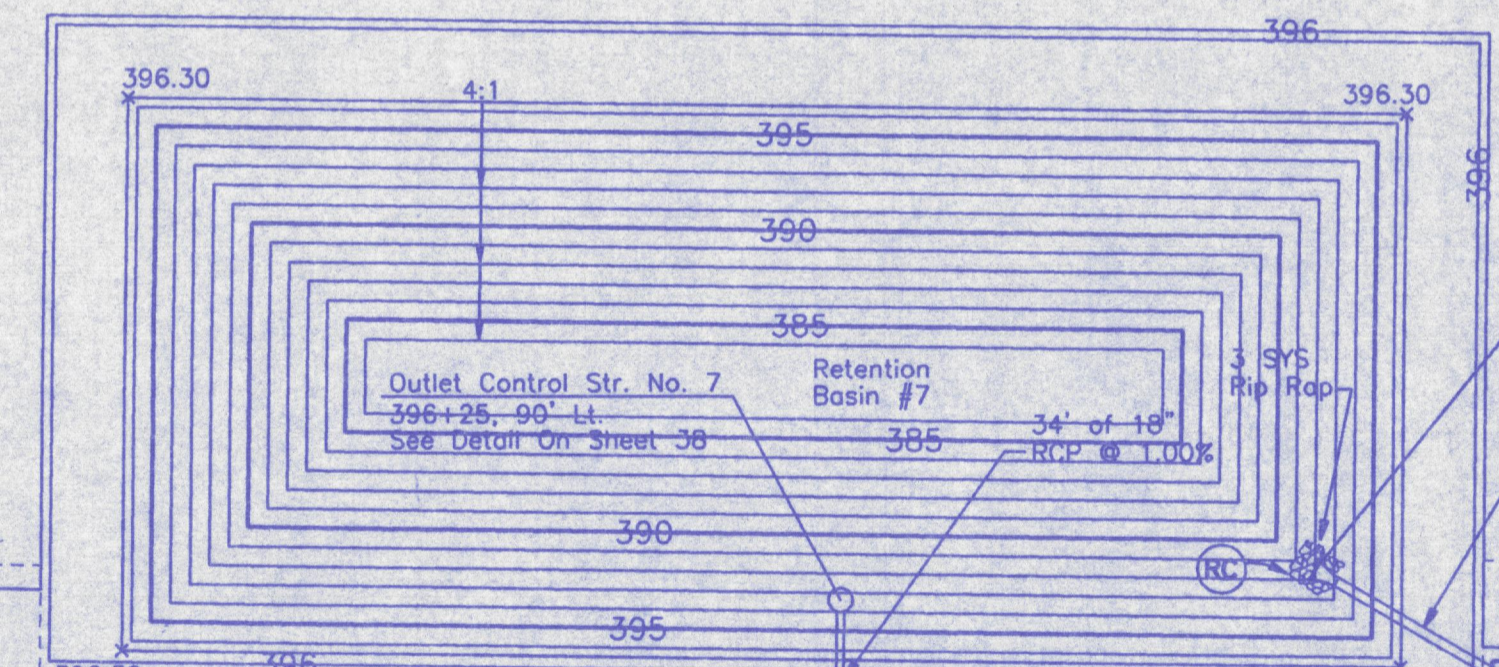
⑪
 929125 SQ FT
 21.33 ACRES
 FPG=397.0

⑫
 1026753 SQ FT
 23.57 ACRES
 FPG=397.0



LOCATION MAP

Top of Bank=396.30
 100-Year Level=396.28
 25-Year Level=395.62
 10-Year Level=395.25
 Normal Pool=392.50
 Bottom=384.00



Str. No 192
 397+24, 97.5' Lt.
 End Section
 I.E. 392.51

Str. No 194
 397+65, 74.5' Lt.
 End Section
 I.E. 392.55

Str. No 193
 396+25, 55' Lt.
 End Section
 I.E. 392.16

4'x6' Box Culvert
 Remove Wingwalls & Apron
 Install 24' of 4'x6' RCP
 Box Culvert @ 0.50%
 See Detail On Sheet 38

1618' of Ditch @ 0.087%
 2' Wide Bottom w/Paved Invert
 3:1 Side Slopes

S. R. 57

		VANDERBURGH INDUSTRIAL PARK SITE GRADING PLAN FOR EVANSVILLE INDUSTRIAL FOUNDATION VANDERBURGH COUNTY, INDIANA	
Prepared By BERNARDIN LOCHMUELLER & ASSOC., INC. Planners - Engineers - Surveyors <small>2000 Hooper Drive Evansville, IN 47710 (317) 419-6300</small>	DATE: 9/8/99 PROJECT NO.: 199-0077 OPD ISSUED: FOR CONSTRUCTION	23	
REVISION NO. DATE			

S:\Projects\199-0077\GRA\IND2.dwg 09/28/99 10:31:11 AM