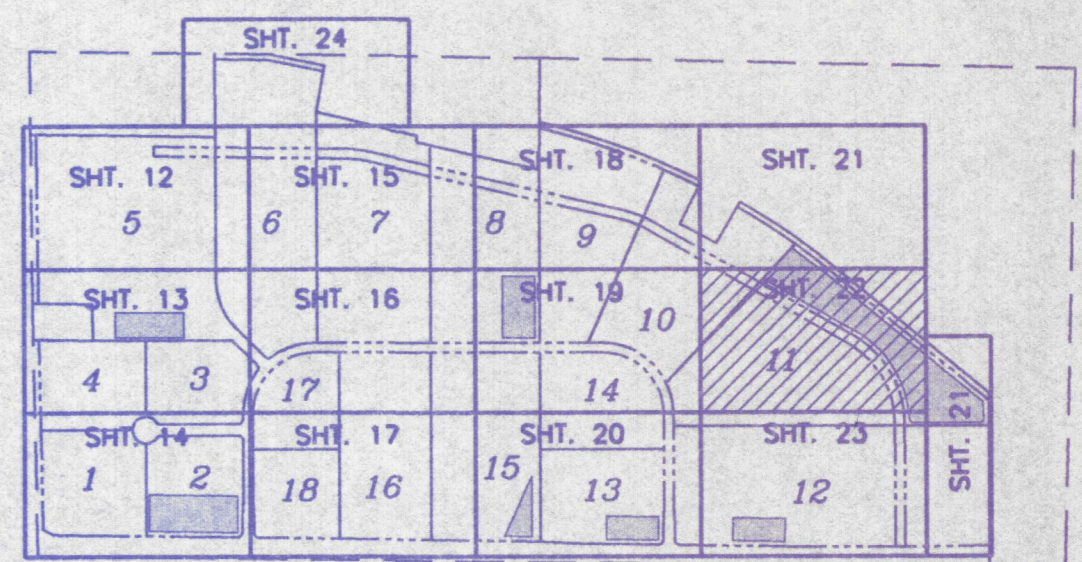




Scale: 1"=40'



LOCATION MAP

128' of 29"x45" Elliptical
Pipe @ 0.24%
(36" Equivalent)

Str. No 106
(3) End Sections
I.E. 394.00
10 SYS
Rip Rap

Str. No 107
(3) End Sections
I.E. 394.31

10
539606 SQ FT
12.39 ACRES

11
929125 SQ FT
21.33 ACRES
FPG=397.0

OLD PETERSBURG ROAD

Retention Basin #6

REVISION			NO.			DATE		

9/11/99

VANDERBURGH INDUSTRIAL PARK
SITE GRADING PLAN
FOR
EVANSVILLE INDUSTRIAL FOUNDATION
VANDERBURGH COUNTY, INDIANA

Prepared by
**BERNARDIN
LOCHMUELLER &
ASSOC., INC.**
Planners · Engineers · Surveyors

DATE: 9/8/99
PROJECT NO.: 199-0077 OPD
ISSUED: **22**
FOR CONSTRUCTION