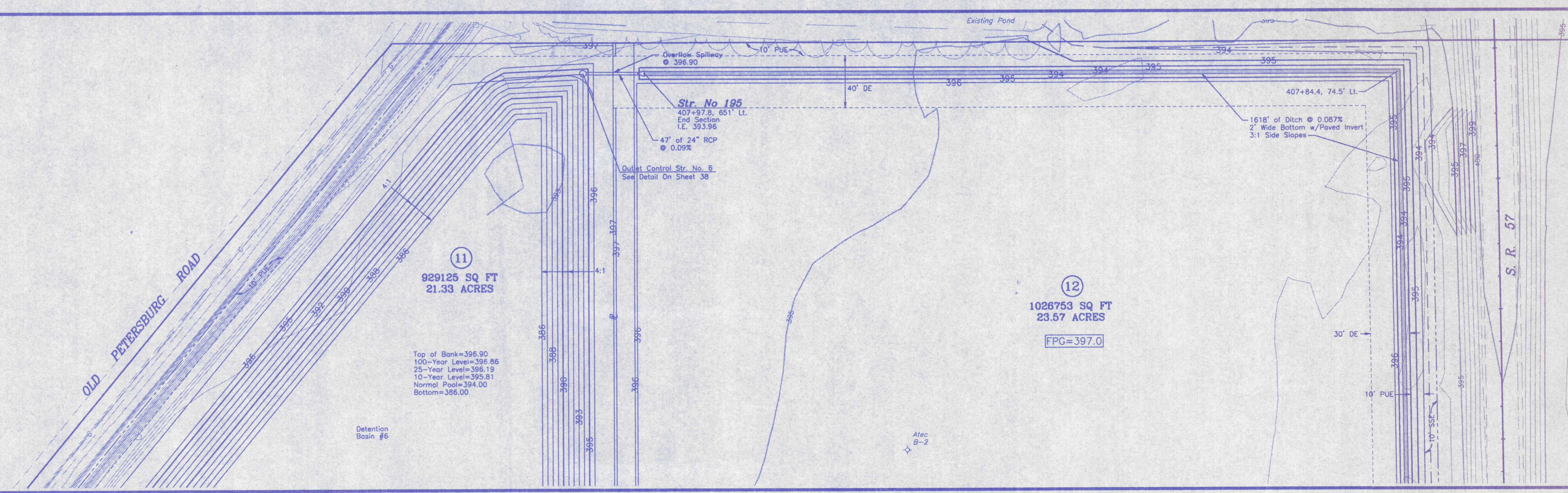


Scale: 1"=40'



11  
929125 SQ FT  
21.33 ACRES

12  
1026753 SQ FT  
23.57 ACRES  
FPG=397.0

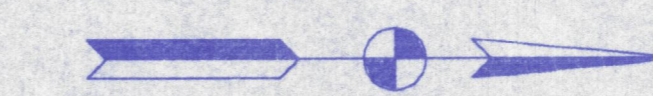
Top of Bank=395.90  
100-Year Level=396.86  
25-Year Level=396.19  
10-Year Level=395.81  
Normal Pool=394.00  
Bottom=386.00

Detention Basin #6

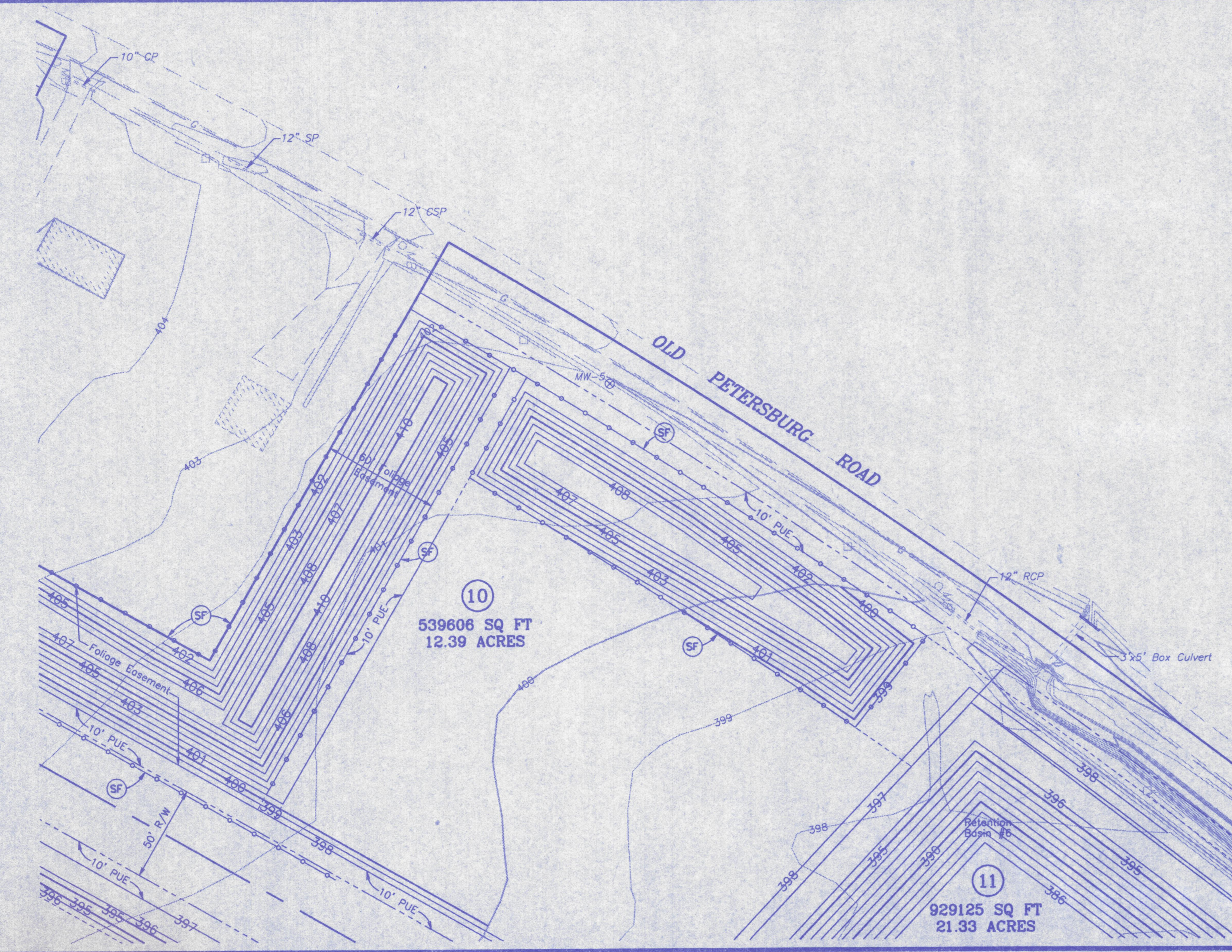
Str. No 195  
407+97.8, 651' LT.  
End Section  
I.E. 393.96  
47' of 24" RCP  
@ 0.09%

Outlet Control Str. No. 6  
See Detail On Sheet 38

1618' of Ditch @ 0.087%  
2' Wide Bottom w/Paved Invert  
3:1 Side Slopes

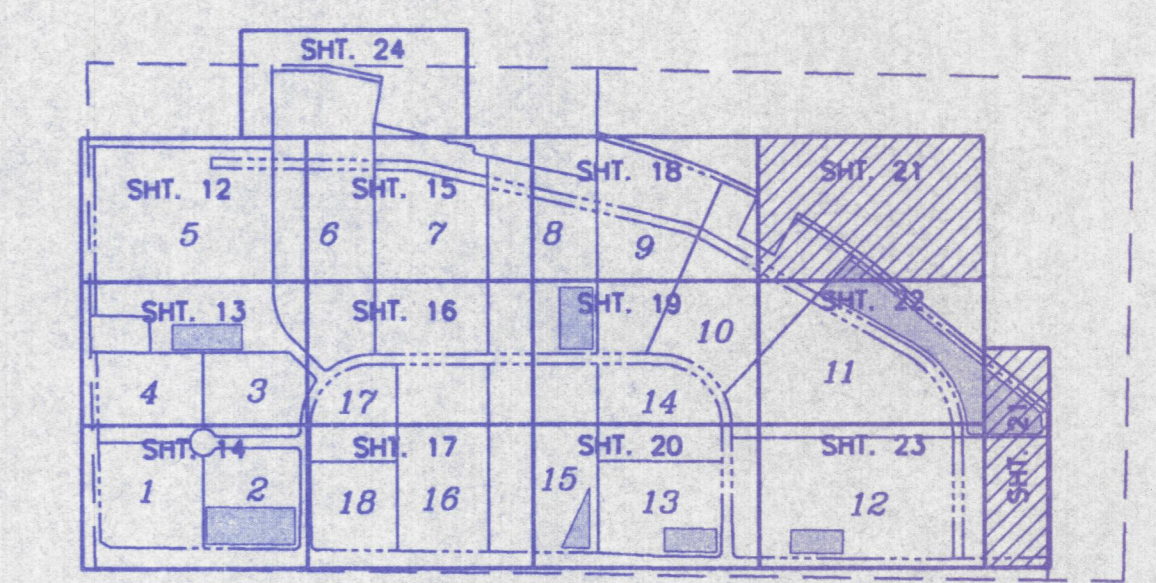


Scale: 1"=40'



10  
539606 SQ FT  
12.39 ACRES

11  
929125 SQ FT  
21.33 ACRES



LOCATION MAP

|   |     |      |   |                |
|---|-----|------|---|----------------|
|   |     |      | <b>VANDEBURGH INDUSTRIAL PARK</b><br>SITE GRADING PLAN<br>FOR<br><b>EVANSVILLE INDUSTRIAL FOUNDATION</b><br><small>VANDEBURGH COUNTY, INDIANA</small> |                |
| Prepared by<br><b>BERNARDIN LOCHMUELLER &amp; ASSOC., INC.</b><br><small>Planners - Engineers - Surveyors</small><br><small>12000 Regal Road, Evansville, IN 47712 (317) 439-8888</small> |     |      | DATE: 9/8/99<br>PROJECT NO.: 199-0077 OPD<br>ISSUED: FOR CONSTRUCTION   | SHT. <b>21</b> |
| REVISION  | NO. | DATE |   |                |

S:\projects\199-0077\plan\mnc\dwg\_05/19/99\_001.dwg