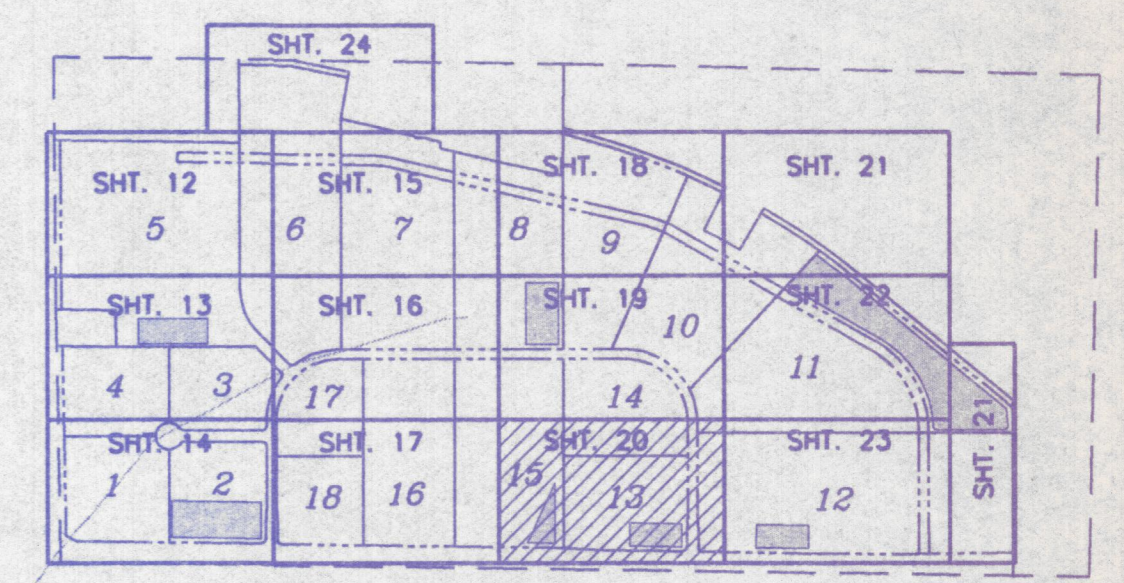


14  
301864 SQ FT  
6.93 ACRES  
FPG=398.5

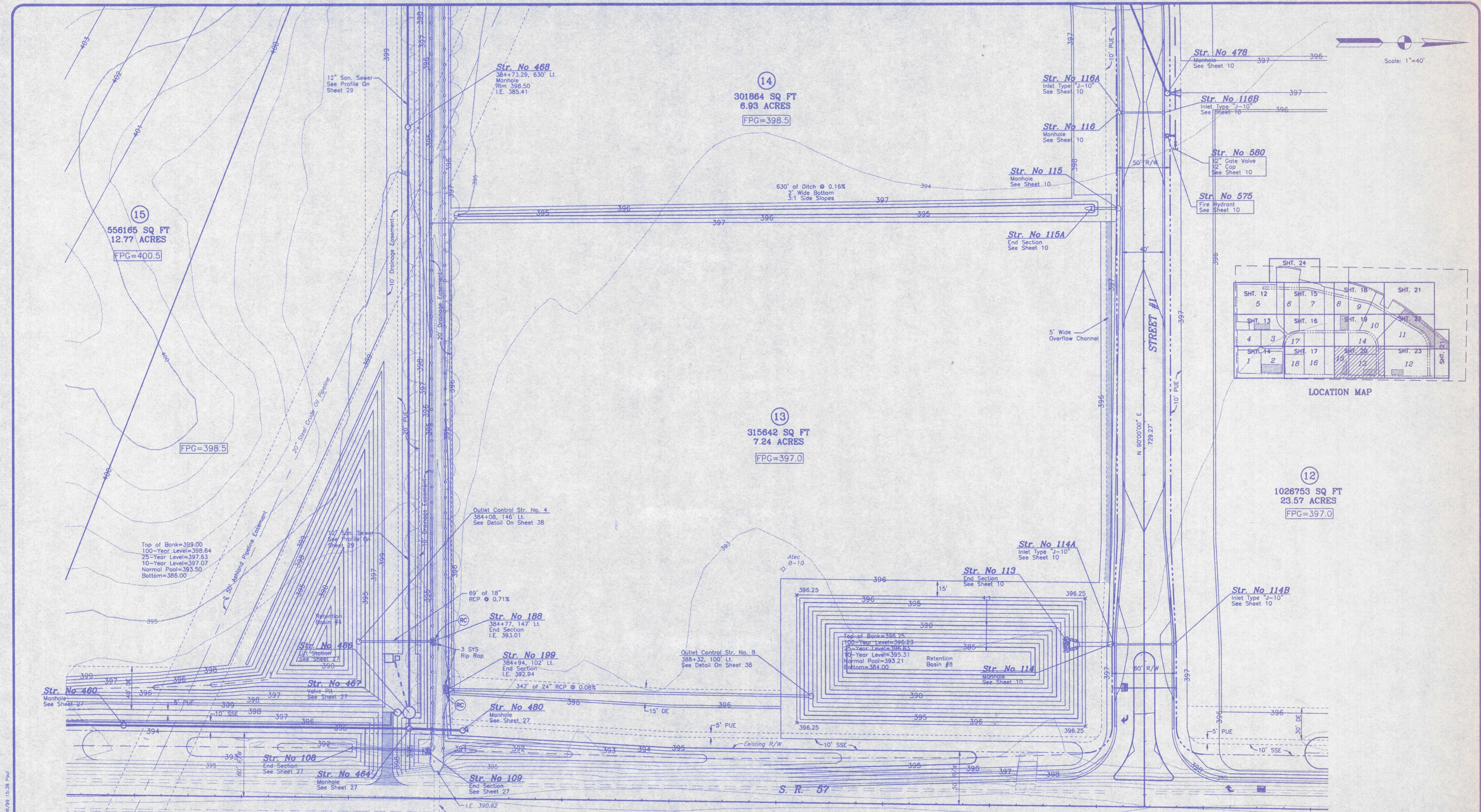
15  
556165 SQ FT  
12.77 ACRES  
FPG=400.5

13  
315642 SQ FT  
7.24 ACRES  
FPG=397.0

12  
1026753 SQ FT  
23.57 ACRES  
FPG=397.0

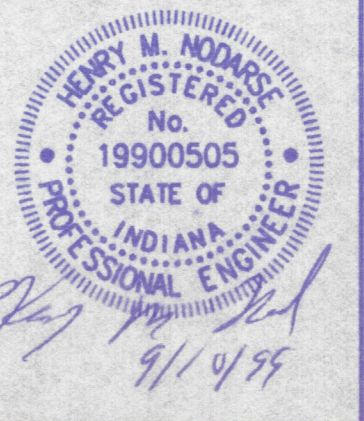


LOCATION MAP



S:\Projects\199-0077\Grading\199-0077.dwg 09/08/99 15:38 Pdu

REVISION	NO.	DATE



**VANDEBURGH INDUSTRIAL PARK**  
SITE GRADING PLAN  
FOR  
**EVANSVILLE INDUSTRIAL FOUNDATION**  
VANDEBURGH COUNTY, INDIANA

Prepared By  
**BERNARDIN & LOCHMUELLER ASSOC., INC.**  
Planners - Engineers - Surveyors  
6200 Regal Road  
Carmel, IN 47521-2579-020

DATE: 9/8/99  
PROJECT NO.: 199-0077 CPD  
ISSUED: **20**  
FOR REVIEW