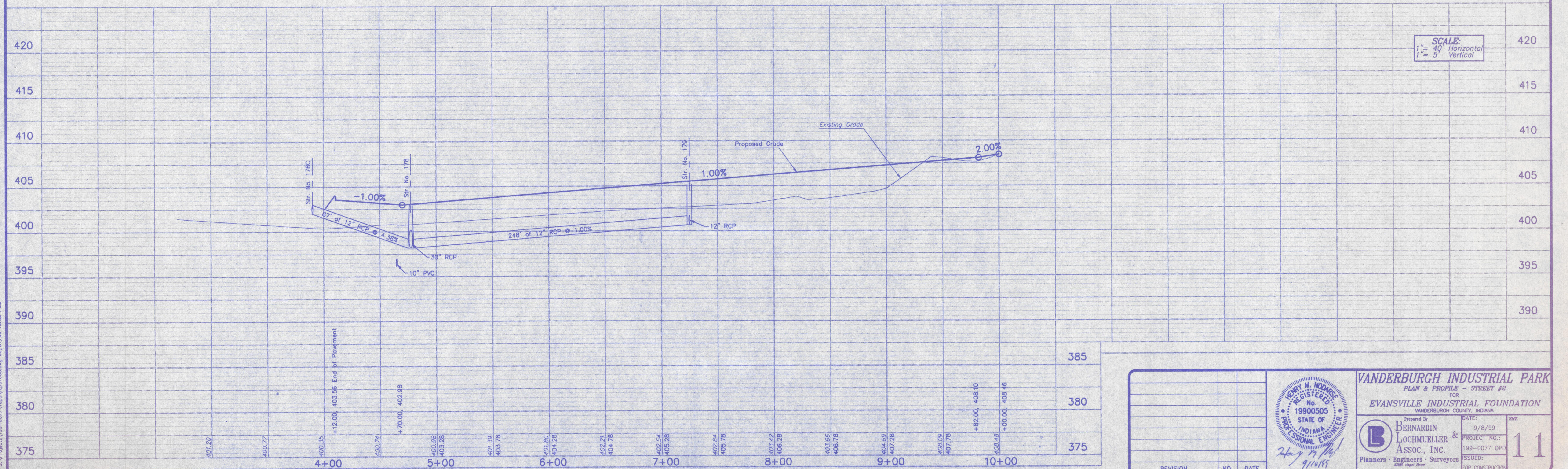
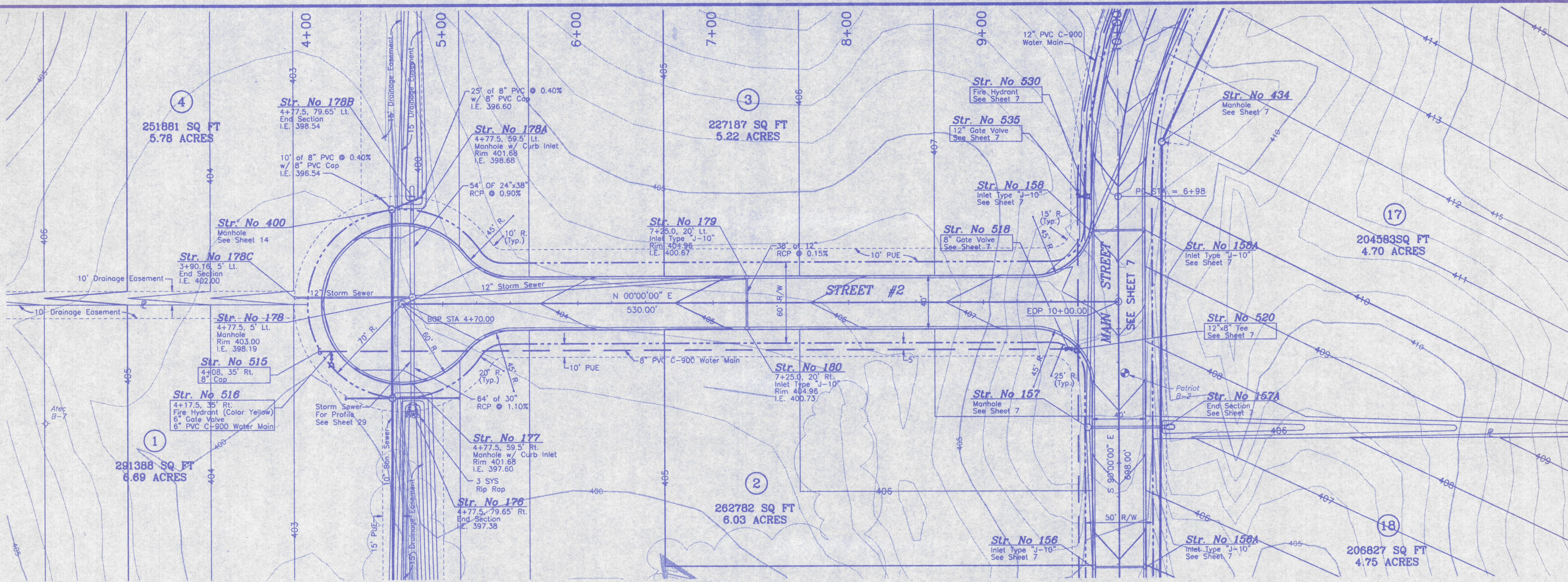


Scale: 1"=40'



SCALE:
 1" = 40' Horizontal
 1" = 5' Vertical

S:\Projects\199-0077\Auto\199-0077.dwg, 09/07/99 16:36 Paul

		VANDERBURGH INDUSTRIAL PARK PLAN & PROFILE - STREET #2 FOR EVANSVILLE INDUSTRIAL FOUNDATION <small>VANDERBURGH COUNTY, INDIANA</small>	
Prepared By: BERNARDIN & LOCHMUELLER & ASSOC., INC. <small>Planners - Engineers - Surveyors</small> <small>1208 High Road</small> <small>Evansville, IN 47712 (812) 419-0100</small>	DATE: 9/8/99 PROJECT NO.: 199-0077 OPD ISSUED: FOR CONSTRUCTION	SHEET: 11	REVISION NO. DATE