

The Hills

Vanderburgh Co., Indiana March 2016

Drainage Plans

Approved By
Vanderburgh County Drainage Board

Date: 4/5/16

Roadway Plans

Approved By
Vanderburgh County Commissioners Board

Date: _____

Sanitary Sewer Plans

Approved By
Evansville Sewer Utility Board

Date: _____

Potable Water Plans

Approved By
Evansville Water Utility Board

Date: _____

Resource List

VECTREN ENERGY DELIVERY - ELECTRIC
Jeremiah Parker (jparker@vectren.com)
Electric Distribution Engineer
1 North Main Street, Evansville, IN 47708
(812) 491-4754 - Office
(812) 205-1905 - Cell

VECTREN ENERGY DELIVERY - GAS
Matt Stewart (mstewart@vectren.com)
Gas Distribution Engineer
1 North Main Street, Evansville, IN 47708

AT&T
Mark Clark (mc3429@att.com)
Engineering Department
134 NW Sixth Street, Evansville, IN 47708
(812) 464-6041

EVANSVILLE WATER & SEWER UTILITY
Doug Ohning (djonohning@ewsu.com)
Manager of Planning & Development
PO Box 19, Evansville, IN 47740
(812) 421-2120, EXT. 2217

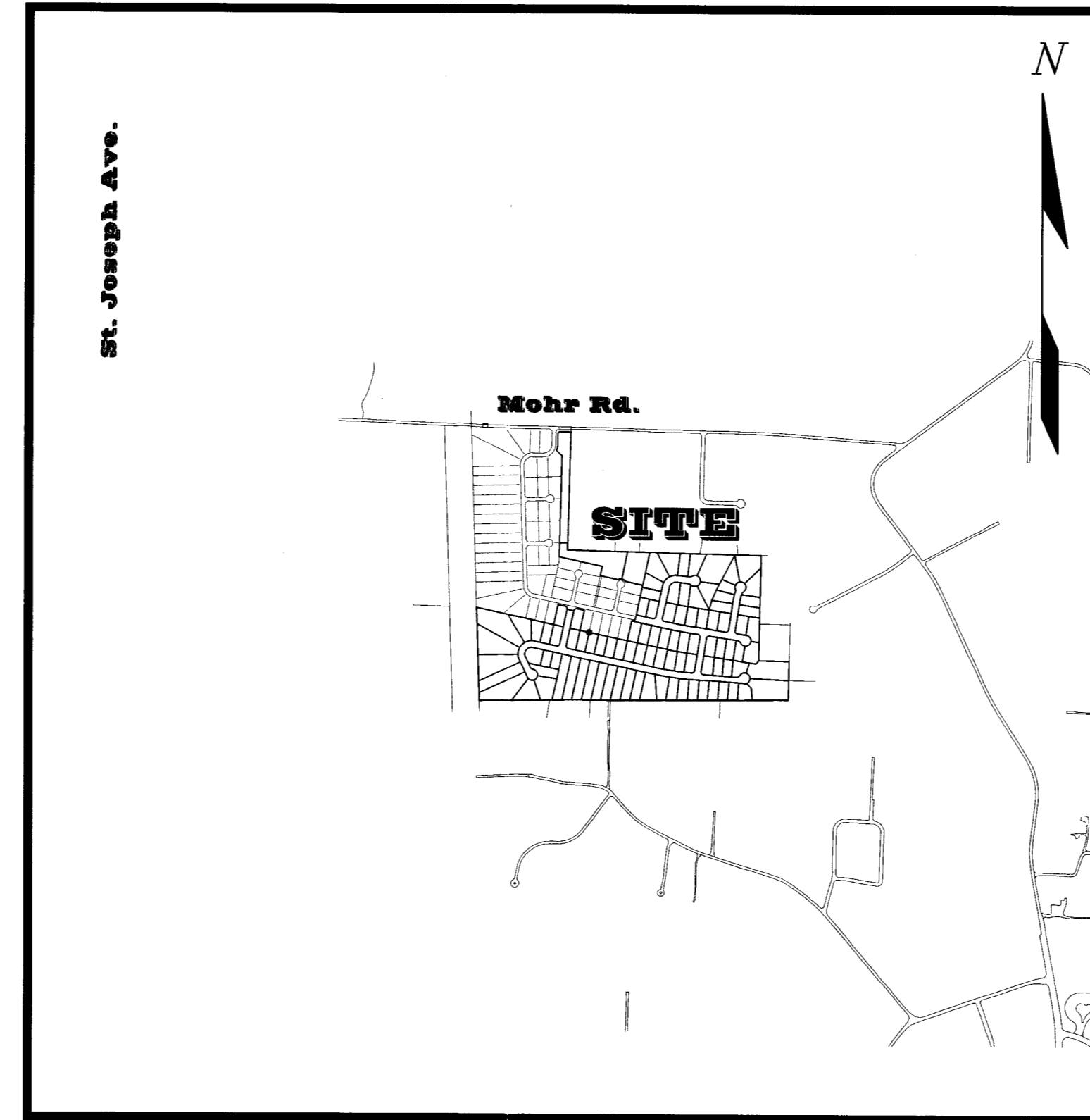
TIME WARNER CABLE
Daryl Hulsey (daryl.hulsey@twcable.com)
Construction Coordinator
1900 Old Business 41, P.O. Box 4658, Evansville, IN
47724-0658
(812) 253-2755 - Office
(812) 305-8348 - Cell

WOW
Tom Cheski (Thomas.Cheski@wowinc.com)
6045 Wedeking Avenue, Evansville, IN 47715
(812) 437-0395 - Office
(812) 470-4572 - Cell

DRAINAGE, EASEMENT, OR PUBLIC LAND ISSUES IN THE COUNTY
Jeff Mueller (jmueller@vanderburghsurveyor.com)
Vanderburgh County Surveyor
1 NW Martin Luther King Jr. Blvd., Room 325,
Civic Center Complex, Evansville IN 47708
(812) 435-5210

HIGHWAY AND LOCAL ROAD ISSUES IN THE COUNTY
John Stoll (jstoll@vanderburghgov.org)
County Engineer
201 NW Fourth Street, Suite 306, Evansville, IN
47708
(812) 435-5773

CALL BEFORE YOU DIG-BURIED LINE
LOCATION
CALL 811



Vicinity Map
Scale: 1"=1000'

Sheet Index

G-100	Cover Sheet
V-100	Primary Plat Sheet
C-101	Infrastructure Plan-Western Half
C-102	Infrastructure Plan-Eastern Half
C-103	Road #1 Plan and Profile
C-104	Road #2 Plan and Profile
C-105	Road #2 Plan and Profile Cont.
C-106	Road #3 Plan and Profile
C-107	Road #4 Plan and Profile
C-108	Farmer's Terrace Plan and Profile
C-109	Breezy Creek Drive Plan and Profile
C-110	Water Utility Plan - NOT INCLUDED
C-111	Water Utility Plan - NOT INCLUDED
C-112	Storm Water Pollution Prevention Plan - NOT INCLUDED
C-113	Storm Water Pollution Prevention Plan - NOT INCLUDED
C-114	Sanitary Sewer Plan and Profile
C-500	Storm Sewer Details
C-501	Road Details
C-502	Storm Water Pollution Prevention Details - NOT INCLUDED
EWSU	Standard Water Details (5 pages) - 2/9/2016 NOT SCANNED
EWSU	Standard Sanitary Sewer Details (4 pages) - 3/10/2016 NOT SCANNED
C-503	Submittals 3/29/2016

Surveyor and Engineer



Engineering ♦ Surveying ♦ Architecture
Construction Management
Newburgh, IN
(812) 464-8585
www.morleyandassociates.com

Developer

Sterchi Homes Corporation
Attn: Brad Sterchi
8820 Big Hill Drive
Evansville, IN 47711
(812) 499-1310

APPROVED

APR 05 2016

RECEIVED BY THE

VANDERBURGH COUNTY
SURVEYOR'S OFFICE
4/5/16 CA

The Contractor is cautioned that the location and/or elevation, size, material type of existing utilities as shown on these plans are based on records of various utility companies, including the Owner and where possible, measurements taken in the field. The information is not to be relied on as being exact or complete. The Contractor must contact the appropriate utility company and/or Owner at least 48 hours before any demolition or excavation to request exact field location, material, type and size of utilities.

Indiana Underground Plant Protection
PH: 811