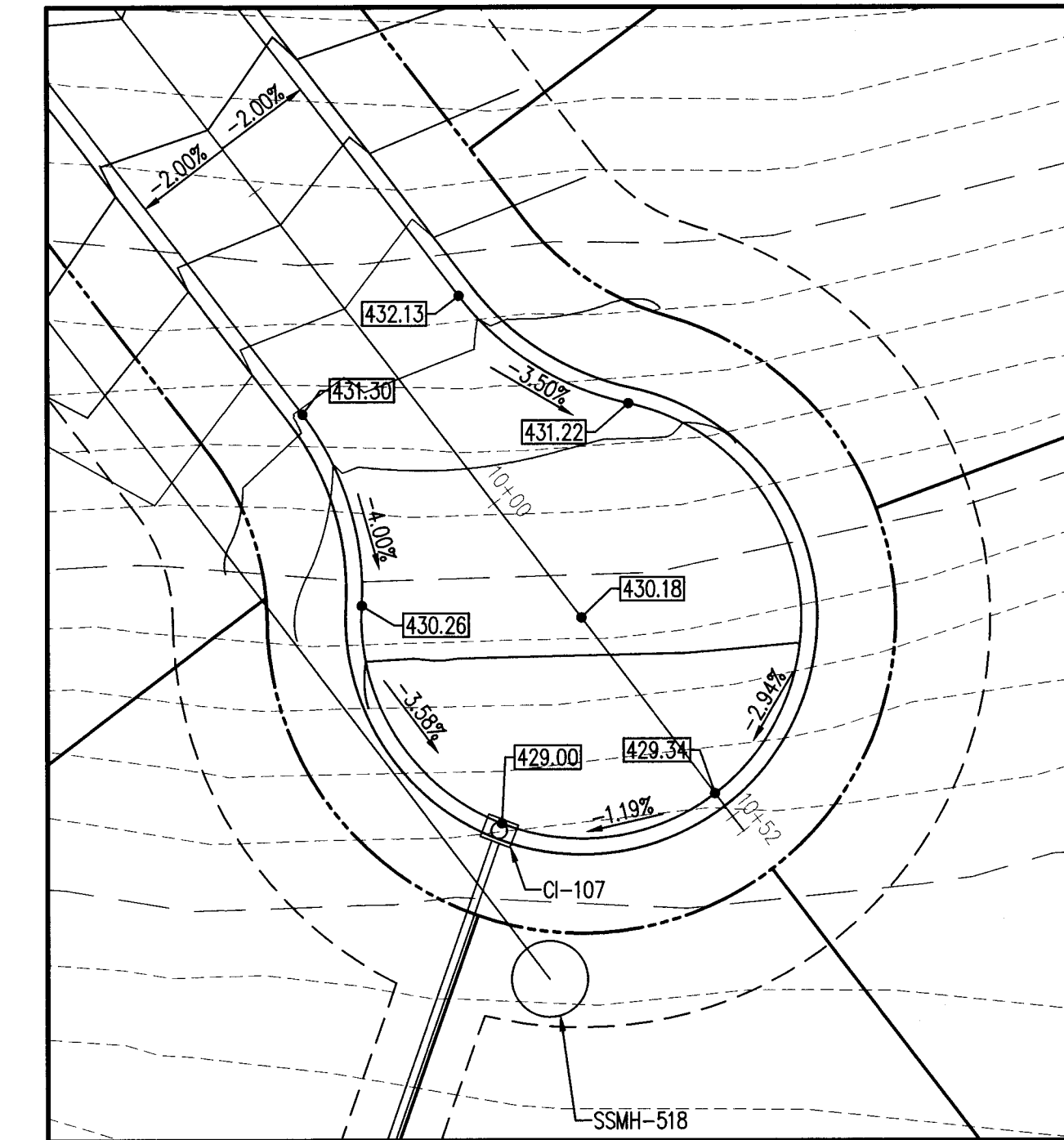
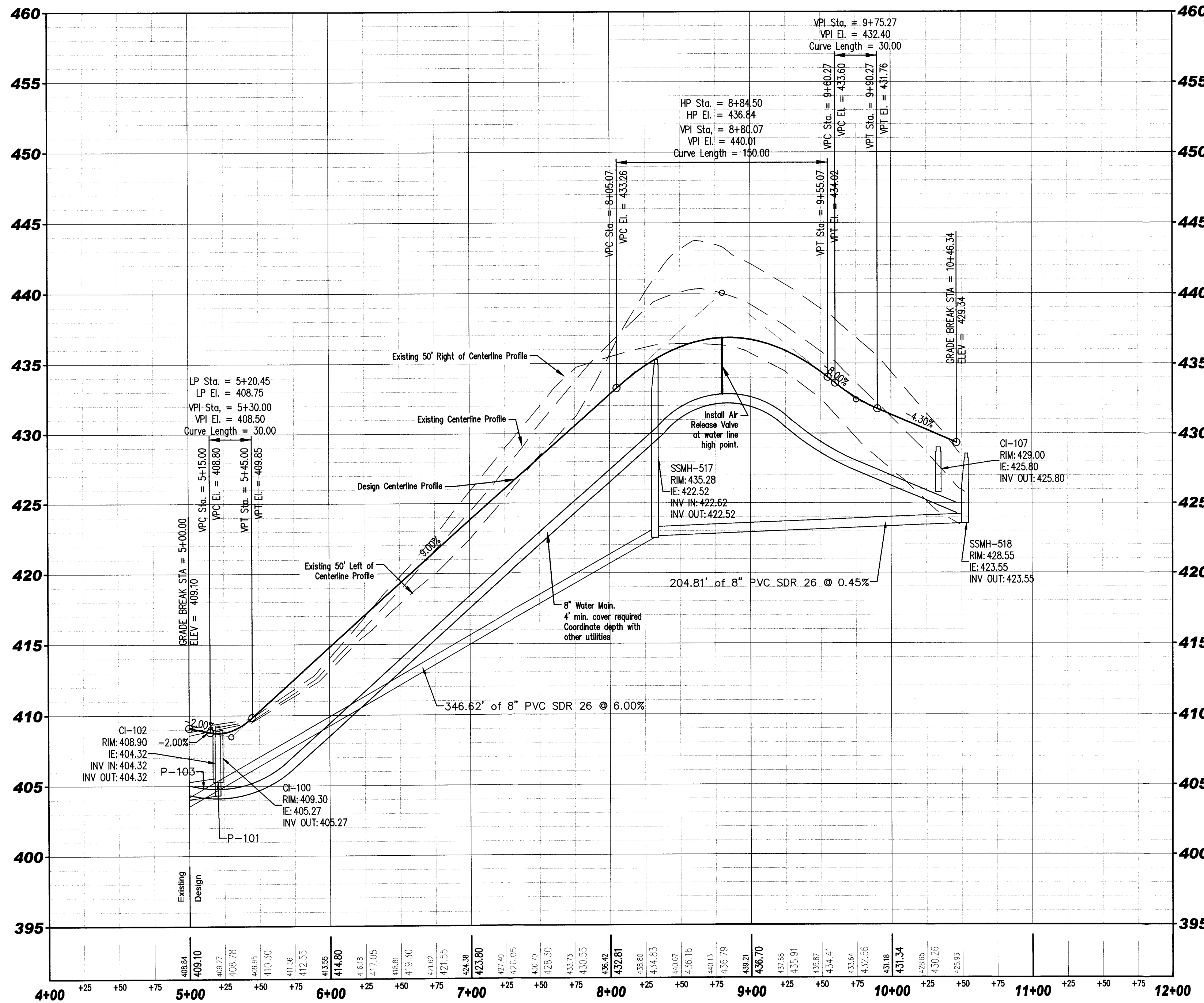


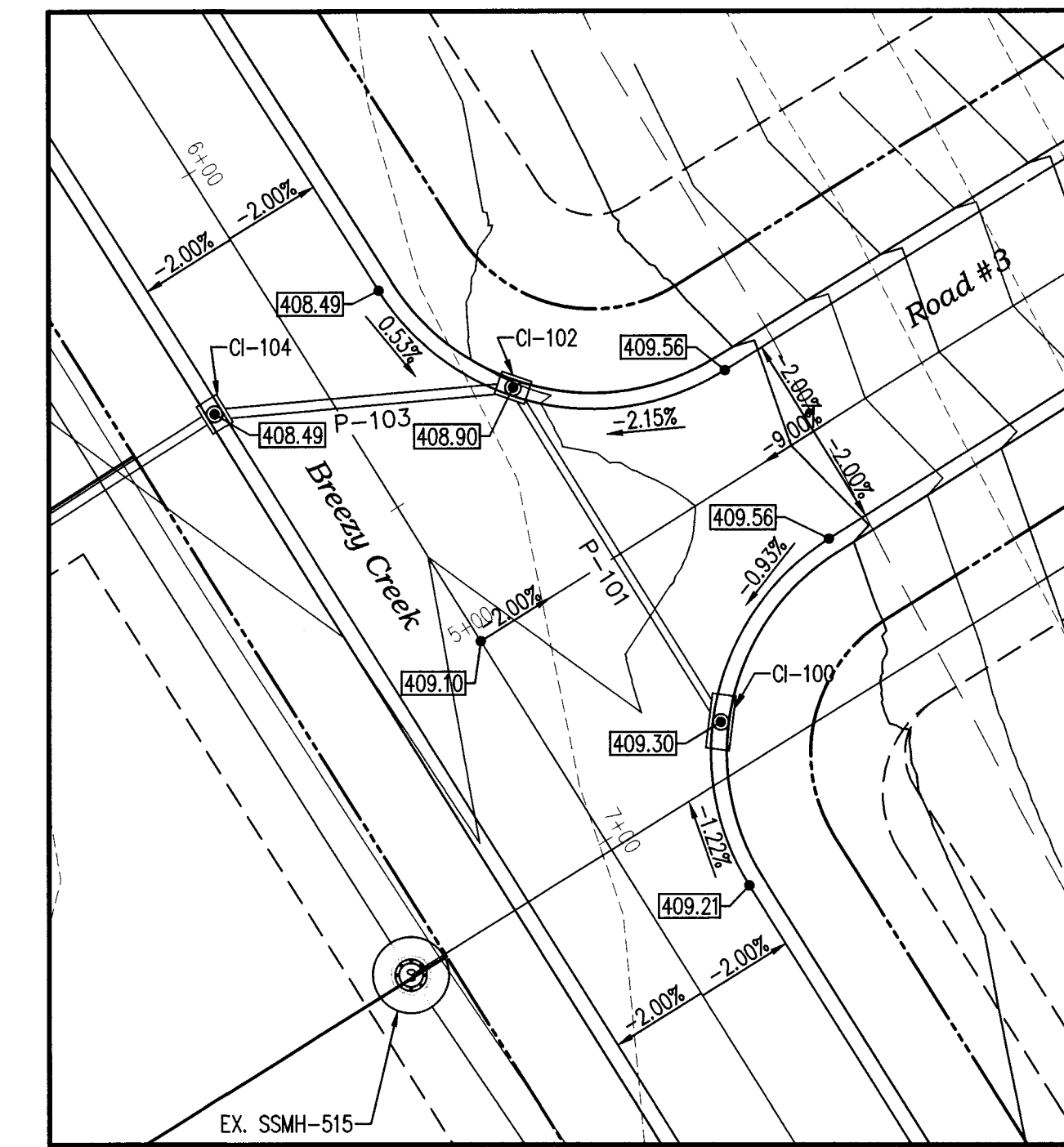
SCALE 1" = 50'



Road #3 Alignment Profile



Road #3 Cul-De-Sac Detail  
Scale 1"=20'



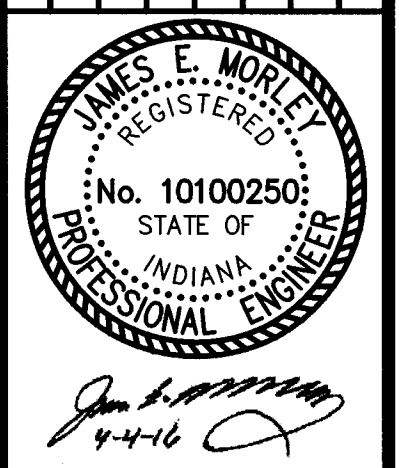
Road #3 and Breezy Creek Drive Intersection Detail  
Scale 1"=20'

Engineering  
 Surveying  
 Architecture  
 Construction Management

**Morley and Associates Inc.**  
 4800 Rosebud Lane  
 Nashville, TN 37218  
 (615) 464-6585  
 www.morleyandassociates.com

All ideas, designs, calculations, and arrangements indicated or recommended by this drawing are owned by and are the property of Morley and Associates, Inc. and have been prepared by Morley and Associates, Inc. or its employees. No part of this drawing may be reproduced, stored in a retrieval system, or transmitted in any form or by any means, electronic, mechanical, photocopying, recording, or by any information storage and retrieval system, without the prior written permission of Morley and Associates, Inc. The user of this drawing shall be responsible for all dimensions and conditions shown on this drawing. If there is a discrepancy between the electronic files and the signed and sealed hard copy drawings, the hard copy shall govern.

No.	By	Date	Description



The Hills - Sterchi Homes Corporation  
**Road #3  
 Plan and Profile**  
 Evansville, Indiana

Project Date: APR 05 2016  
 Scale: H: 1" = 50', V: 1" = 5'  
 Designed By: JEM Job Number: 5553.4.007-B  
 Drawn By: ARK Date: 4/4/2016  
 Filename: J:\2009\0500-5553\5553Cul3DThe Hills Base ARK.dwg  
 Sheet Number: **C-106**

RECEIVED BY THE  
 VANDERBURGH COUNTY  
 SURVEYOR'S OFFICE  
 4/5/16 CR