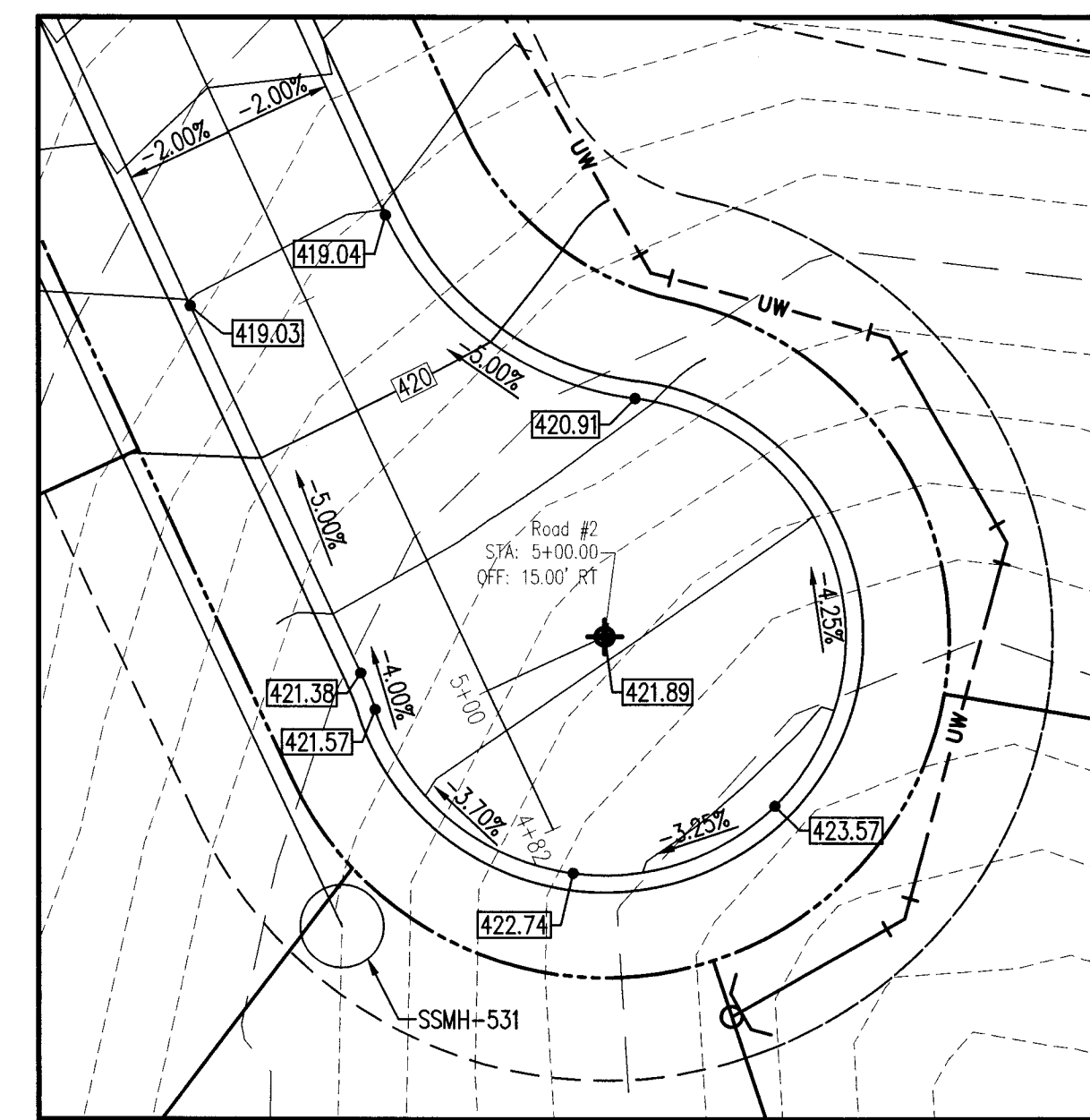
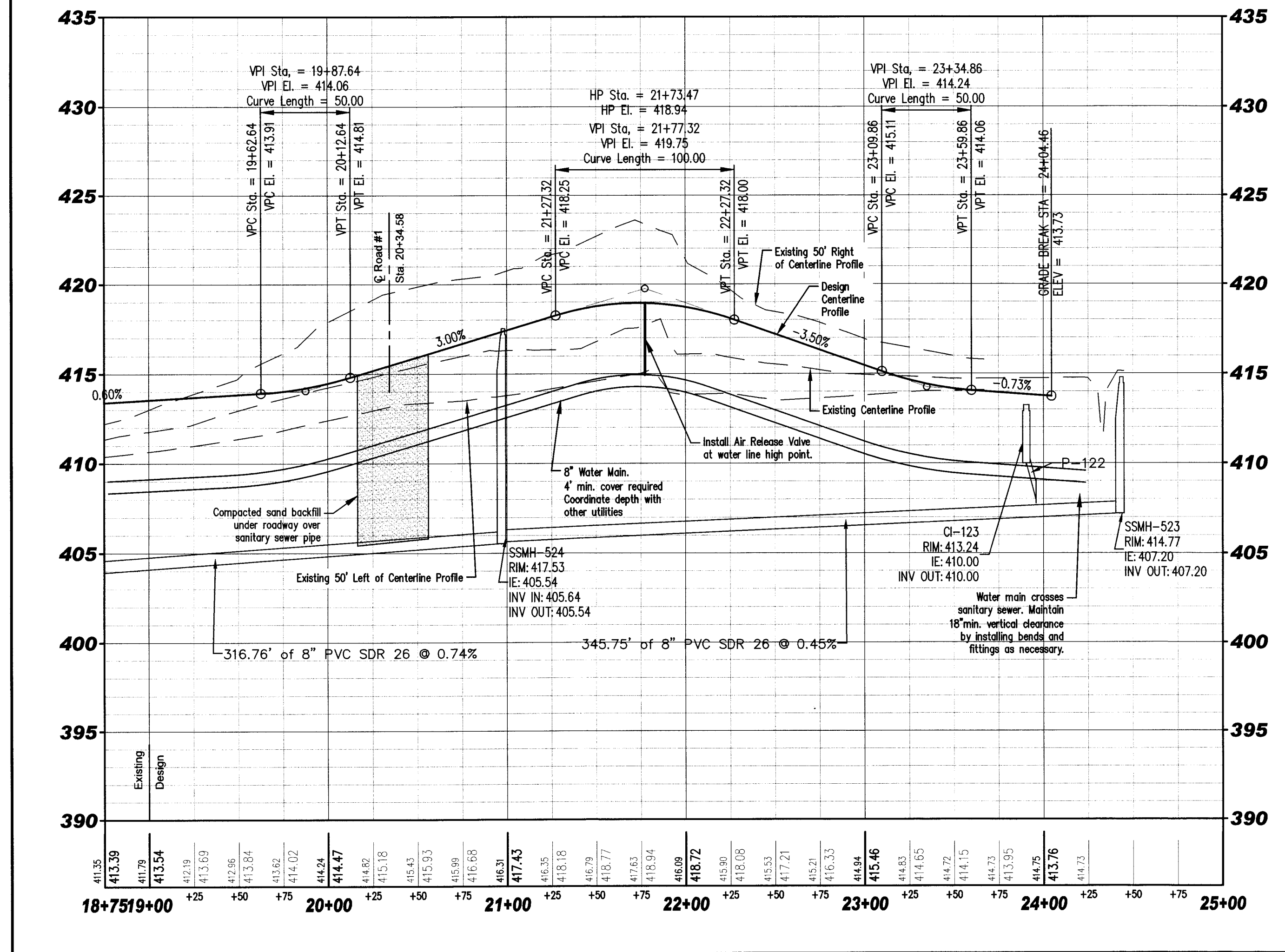
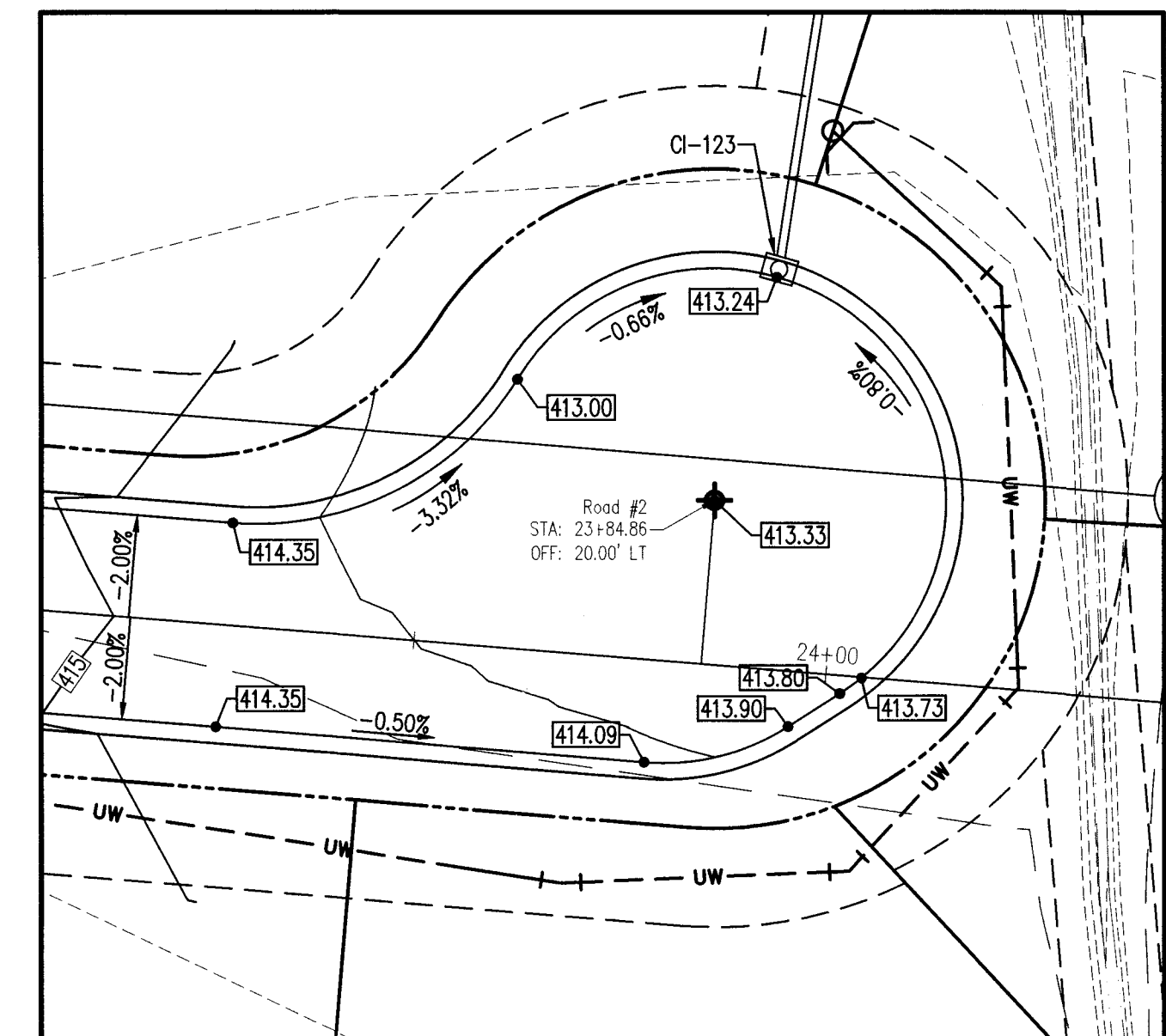


**Road #2 Alignment Profile**



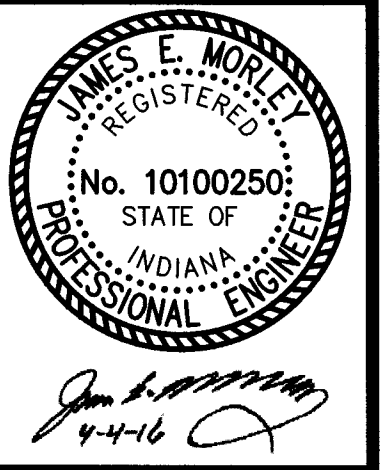
**Road #2 West Cul-De-Sac Detail**  
Scale 1"=20'



**Road #2 East Cul-De-Sac Detail**  
Scale 1"=20'

All ideas, designs, calculations, and arrangements indicated or represented on these drawings are the property of Morley and Associates, Inc. and shall remain confidential and proprietary information of Morley and Associates, Inc. and shall not be disclosed to or used for any purpose other than the project. They shall not be used for any other project without the written consent of Morley and Associates, Inc. When dimensions on these drawings shall have precedence over scale, the dimensions shall govern. The drawings are the property of Morley and Associates, Inc. and shall not be reproduced, copied, or transmitted in any form or by any means, electronic or mechanical, including photocopying, recording, or by any information storage and retrieval system, without the prior written permission of Morley and Associates, Inc. The drawings are the property of Morley and Associates, Inc. and shall not be reproduced, copied, or transmitted in any form or by any means, electronic or mechanical, including photocopying, recording, or by any information storage and retrieval system, without the prior written permission of Morley and Associates, Inc. The drawings are the property of Morley and Associates, Inc. and shall not be reproduced, copied, or transmitted in any form or by any means, electronic or mechanical, including photocopying, recording, or by any information storage and retrieval system, without the prior written permission of Morley and Associates, Inc.

No.	By	Date	Description



The Hills - Sterchi Homes Corporation  
**Road #2**  
**Plan and Profile**  
Evansville, Indiana

APR 15 2016  
Scale: H: 1" = 50', V: 1" = 5'  
Designed By: JEM  
Drawn By: ARK  
Date: 4/4/2016  
Job Number: 5553.4.007-B  
File Name: J:\5000a550-6599553-Civil 3D\The Hills\553 The Hills Base ARK.dwg

Sheet Number:  
**C-105**

RECEIVED BY THE  
VANDERBURGH COUNTY  
SURVEYOR'S OFFICE  
4/5/16 CA