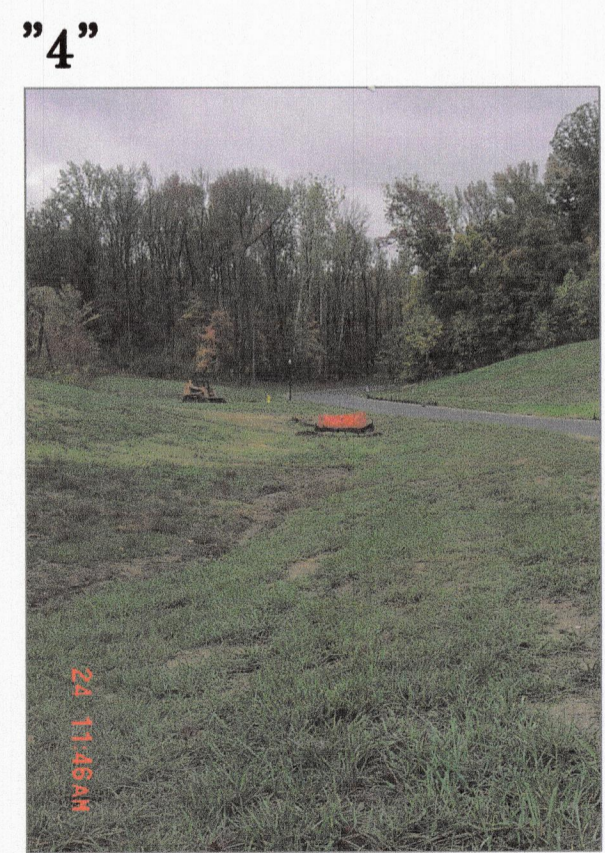
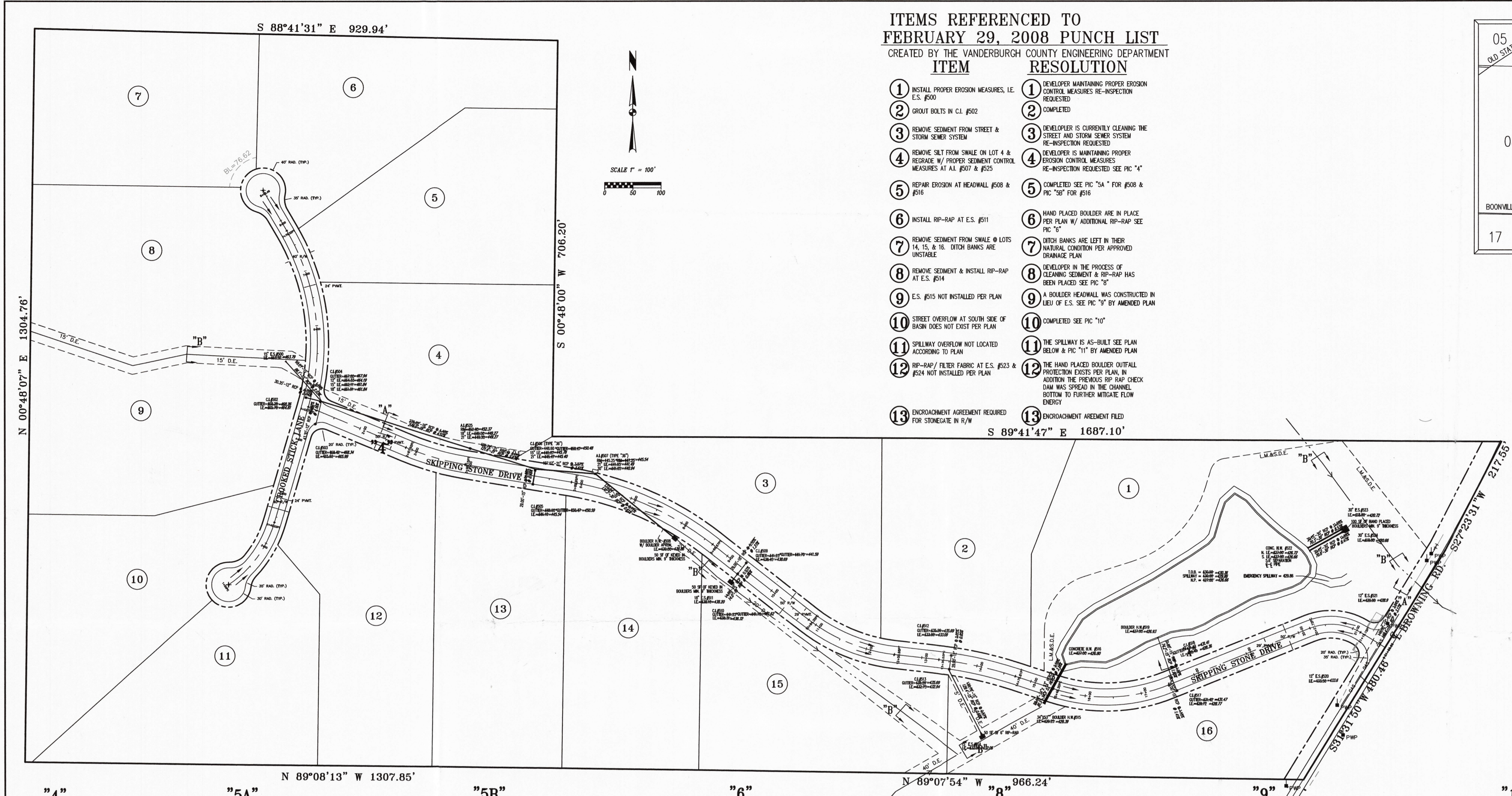
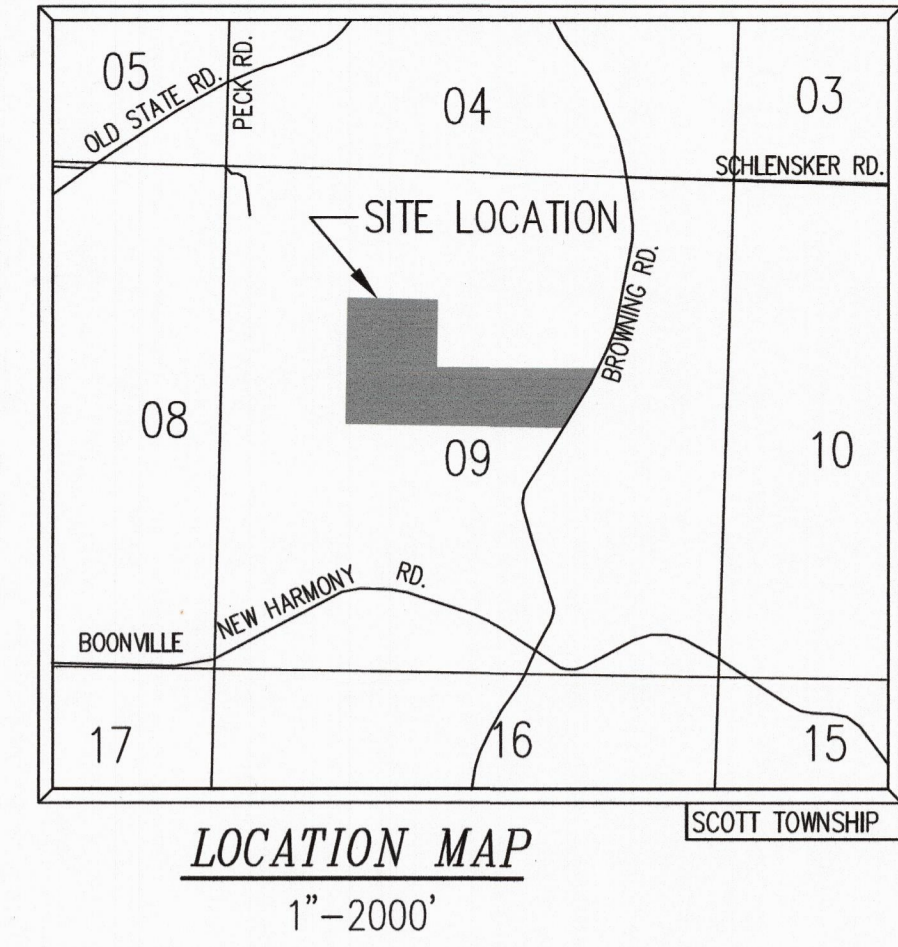


ITEMS REFERENCED TO
FEBRUARY 29, 2008 PUNCH LIST
 CREATED BY THE VANDERBURGH COUNTY ENGINEERING DEPARTMENT

- | ITEM | RESOLUTION |
|--|---|
| ① INSTALL PROPER EROSION MEASURES, I.E. E.S. #500 | ① DEVELOPER MAINTAINING PROPER EROSION CONTROL MEASURES RE-INSPECTION REQUESTED |
| ② GROUT BOLTS IN C.I. #502 | ② COMPLETED |
| ③ REMOVE SEDIMENT FROM STREET & STORM SEWER SYSTEM | ③ DEVELOPER IS CURRENTLY CLEANING THE STREET AND STORM SEWER SYSTEM RE-INSPECTION REQUESTED |
| ④ REMOVE SILT FROM SWALE ON LOT 4 & REGRADE W/ PROPER SEDIMENT CONTROL MEASURES AT ALL #507 & #525 | ④ DEVELOPER IS MAINTAINING PROPER EROSION CONTROL MEASURES RE-INSPECTION REQUESTED SEE PIC "A" |
| ⑤ REPAIR EROSION AT HEADWALL #508 & #516 | ⑤ COMPLETED SEE PIC "5A" FOR #508 & PIC "5B" FOR #516 |
| ⑥ INSTALL RIP-RAP AT E.S. #511 | ⑥ HAND PLACED BOULDER ARE IN PLACE PER PLAN W/ ADDITIONAL RIP-RAP SEE PIC "5" |
| ⑦ REMOVE SEDIMENT FROM SWALE @ LOTS 14, 15, & 16. DITCH BANKS ARE UNSTABLE | ⑦ DITCH BANKS ARE LEFT IN THEIR NATURAL CONDITION PER APPROVED DRAINAGE PLAN |
| ⑧ REMOVE SEDIMENT & INSTALL RIP-RAP AT E.S. #514 | ⑧ DEVELOPER IN THE PROCESS OF CLEANING SEDIMENT & RIP-RAP HAS BEEN PLACED SEE PIC "5" |
| ⑨ E.S. #515 NOT INSTALLED PER PLAN | ⑨ A BOULDER HEADWALL WAS CONSTRUCTED IN LIEU OF E.S. SEE PIC "9" BY AMENDED PLAN |
| ⑩ STREET OVERFLOW AT SOUTH SIDE OF BASIN DOES NOT EXIST PER PLAN | ⑩ COMPLETED SEE PIC "10" |
| ⑪ SPILLWAY OVERFLOW NOT LOCATED ACCORDING TO PLAN | ⑪ THE SPILLWAY IS AS-BUILT SEE PLAN BELOW & PIC "11" BY AMENDED PLAN |
| ⑫ RIP-RAP / FILTER FABRIC AT E.S. #523 & #524 NOT INSTALLED PER PLAN | ⑫ THE HAND PLACED BOULDER OUTFALL PROTECTION EXISTS PER PLAN. IN ADDITION THE PREVIOUS RIP RAP CHECK DAM WAS SPREAD IN THE CHANNEL BOTTOM TO FURTHER MITIGATE FLOW ENERGY |
| ⑬ ENCROACHMENT AGREEMENT REQUIRED FOR STONEGATE IN R/W | ⑬ ENCROACHMENT AGREEMENT FILED |



Scale: 1"=100'

Designed By: NRM Job Number: 465-08-12
 Drawn By: NRM Date: 10-24-08
 Filename: AMENDED DRAINAGE.DWG
 Sheet Number: AM.DR-1

Project: STONEGATE ESTATES
 Sheet Title: AMENDED DRAINAGE PLAN

SITECON, Inc.
 Engineers-Surveyors
 10335 Hedden Rd. Suite 2
 Evansville, Indiana 47725
 (812) 868-0877

No.	By	Date	Description

Written dimensions on these drawings shall have precedence over scale dimensions. Contractors shall verify and be responsible for all dimensions and conditions on the job and SITECON, Inc. shall not be responsible for any errors or omissions from the dimensions and conditions shown by these drawings.