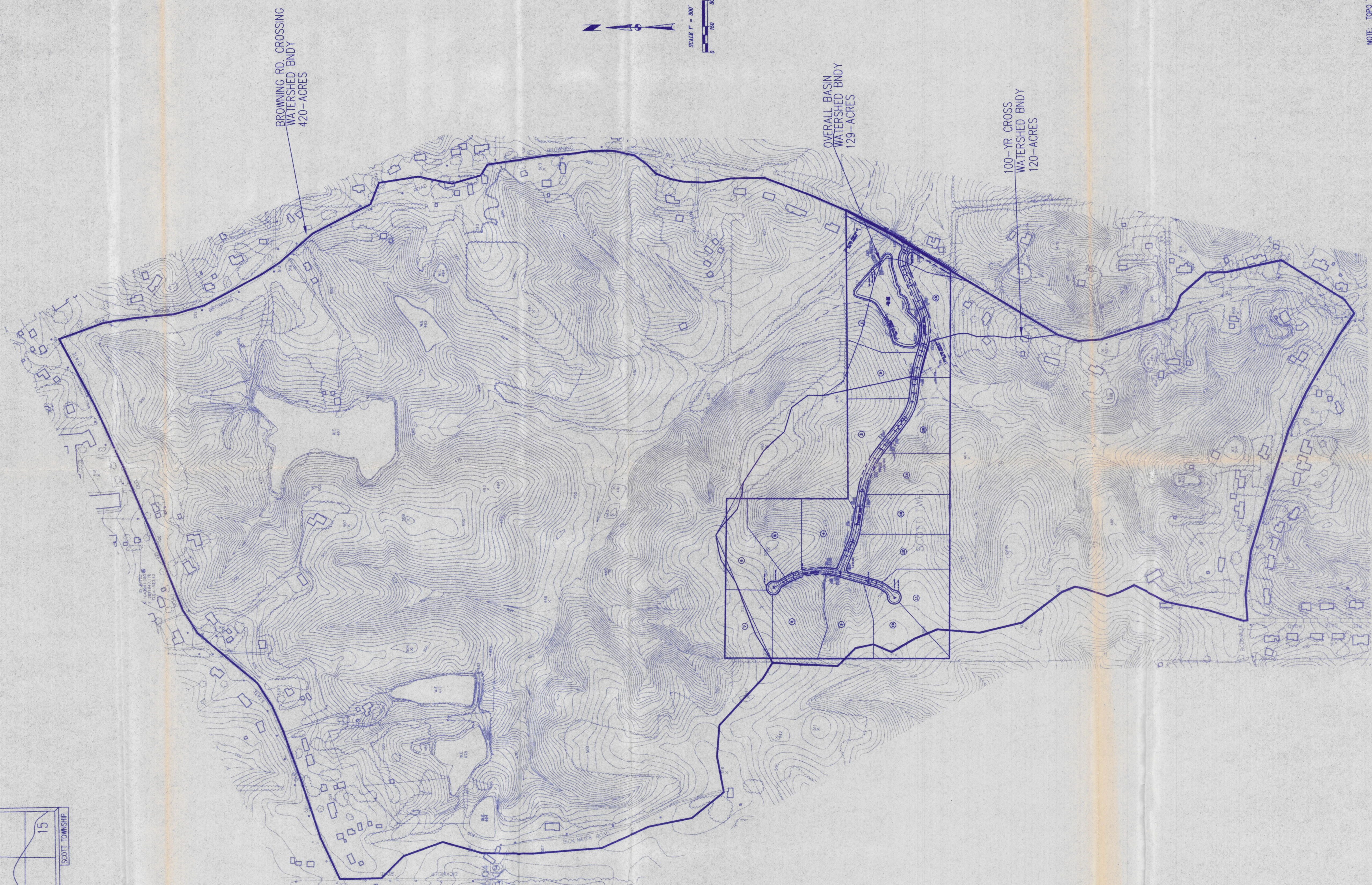
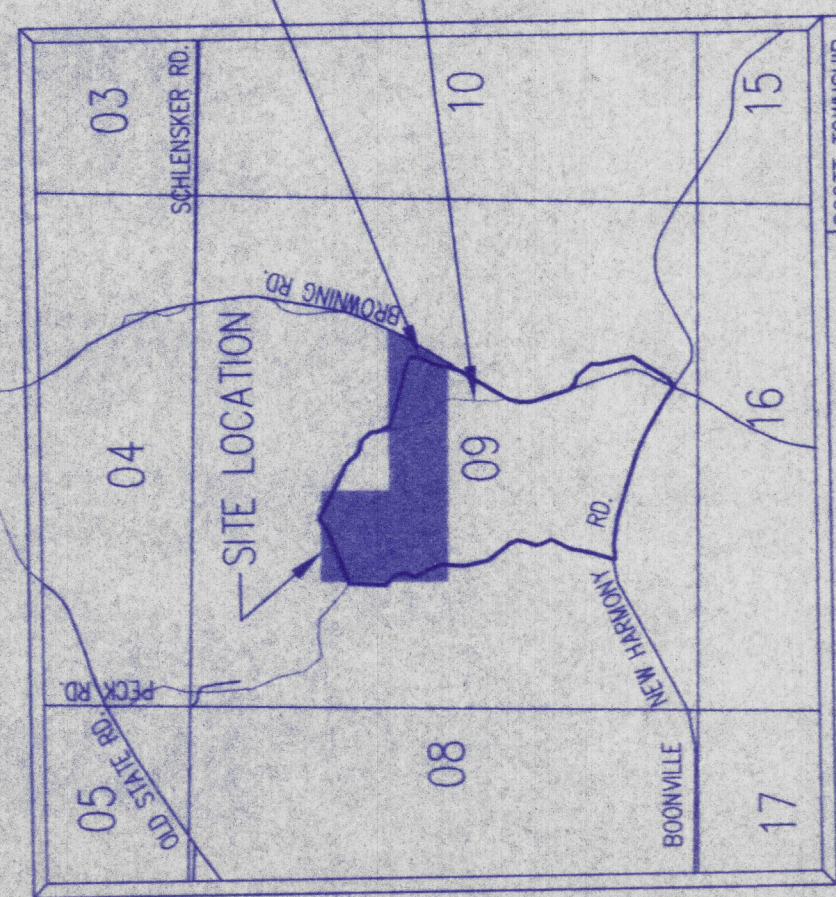


BROWNING RD. CROSSING
WATERSHED BNDY
420-ACRES

OVERALL BASIN
WATERSHED BNDY
129-ACRES

100-YR CROSS
WATERSHED BNDY
120-ACRES



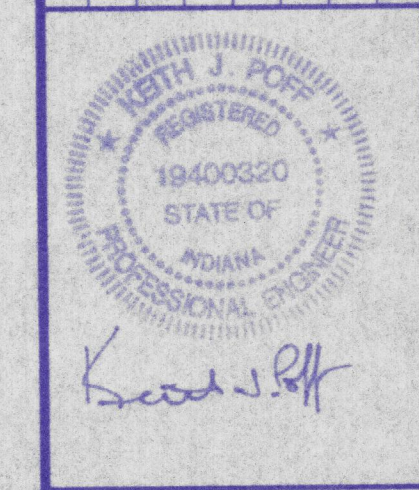
NOTE: TOPO TAKEN FROM 1990 CO. TOPO

While preparing these drawings, all necessary precautions were taken to ensure accuracy. However, the contractor shall verify all dimensions and conditions on the job and SITECON, Inc. must be notified of any variations from the dimensions and conditions shown by these drawings.

SITECON, Inc.
Engineers-Surveyors
10335 Hedden Rd, Suite 2
Evansville, Indiana 47725
(812) 868-0877

Project: **Stonegate Estates**
Sheet Title: **Existing Basins**

No.	By	Date	Description



Scale: 1"=100'
Designed By: NRM Job Number: 465-06-12
Drawn By: NRM Date: 11-17-06
Filename: DEVELOPED BASINS.DWG

Sheet Number: **BASINS**

RECEIVED BY THE
VANDERBURGH COUNTY
SURVEYOR'S OFFICE
11/21/06 3:30pm pfp