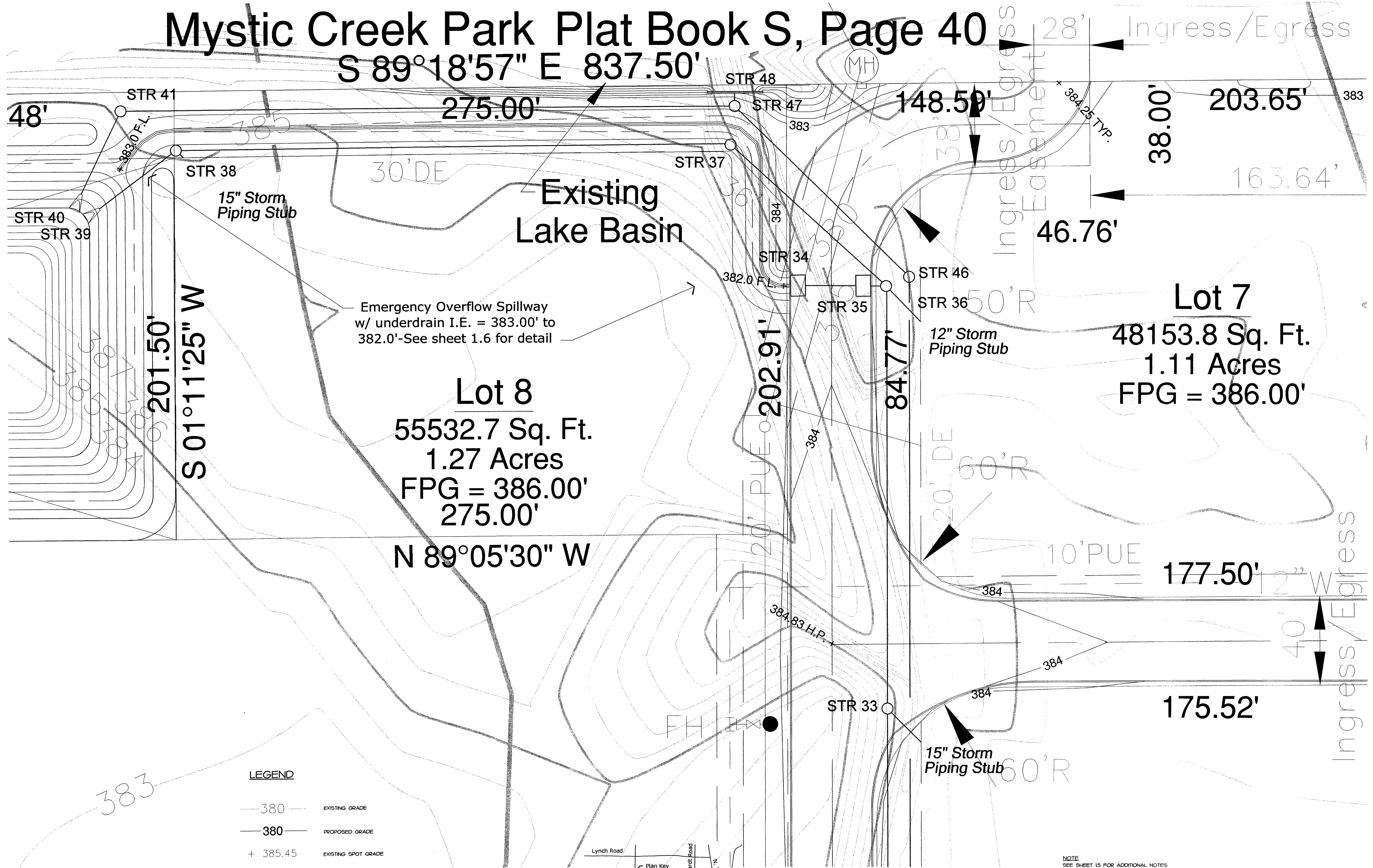


# Mystic Creek Park Plat Book S, Page 40

S 89°18'57" E 837.50'



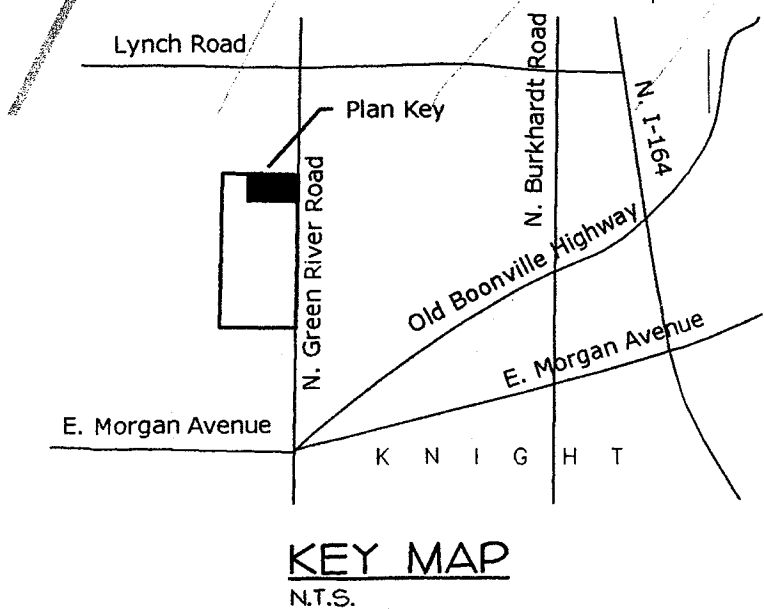
Emergency Overflow Spillway  
w/ underdrain I.E. = 383.00' to  
382.0'-See sheet 1.6 for detail

**Lot 8**  
55532.7 Sq. Ft.  
1.27 Acres  
FPG = 386.00'  
275.00'

**Lot 7**  
48153.8 Sq. Ft.  
1.11 Acres  
FPG = 386.00'

**LEGEND**

— 380 —	EXISTING GRADE
— 380 —	PROPOSED GRADE
+ 385.45	EXISTING SPOT GRADE
+ 385.05 Rim	PROPOSED SPOT GRADE
H.P.	SPOT GRADE HIGH POINT
L.P.	SPOT GRADE LOW POINT
M.P.	MAINTENANCE PATH GRADE
F.L.	SWALE FLOW LINE GRADE



**NOTE**  
SEE SHEET 15 FOR ADDITIONAL NOTES  
AND SHEET 16 FOR DRAINAGE DETAILS.  
SEE ALSO SHEET 18 FOR EROSION CONTROL  
PLAN AS WELL AS "CONSTRUCTION SITE  
STORMWATER RUNOFF CONTROL MANUAL"  
FOR MEASURE IMPLEMENTATION RELATIVE  
TO LAND DISTURBANCE FOR SCHEDULING  
RELATIVE TO DRAINAGE WORK.



**ENLARGED DRAINAGE PLAN**  
1" = 20'



**Design & Engineering, Inc.**  
P.O. Box 8124  
EVANSVILLE, INDIANA 47716  
PHONE: 812-473-5800

THIS DRAWING IN ITS ENTIRETY IS THE  
EXPLICIT PROPERTY OF LANDMARK DESIGN  
AND ENGINEERING, INC. ANY REPRODUCTION  
WHETHER PARTIAL OR FULL SHALL NOT BE  
MADE WITHOUT EXPRESS WRITTEN CONSENT  
OF AN AUTHORIZED REPRESENTATIVE OF  
LANDMARK DESIGN & ENGINEERING, INC.  
ANY DEVIATION IN WORD OR OMISSION  
FROM LATEST CODE REQUIREMENTS IS NOT  
INTENTIONAL AND SHALL NOT ALLEVIATE  
CONTRACTOR'S RESPONSIBILITY TO UPHOLD  
SAID REQUIREMENTS. THIS PLAN IS NOT  
A PART OF ANY CONTRACT UNLESS SPECIFICALLY  
NOTED IN SAID CONTRACT.

REVISIONS	
NO.	DESCRIPTION

**ENLARGED DRAINAGE PLAN**  
**STONEFIELD CROSSING SUBDIVISION**  
2800 N. GREEN RIVER ROAD  
EVANSVILLE, INDIANA



DRAWN BY: [Signature]  
DATE: 8-17-07  
DET

DRAWING NUMBER  
**1.5E**