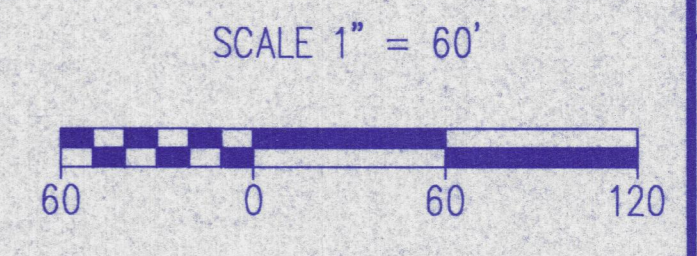
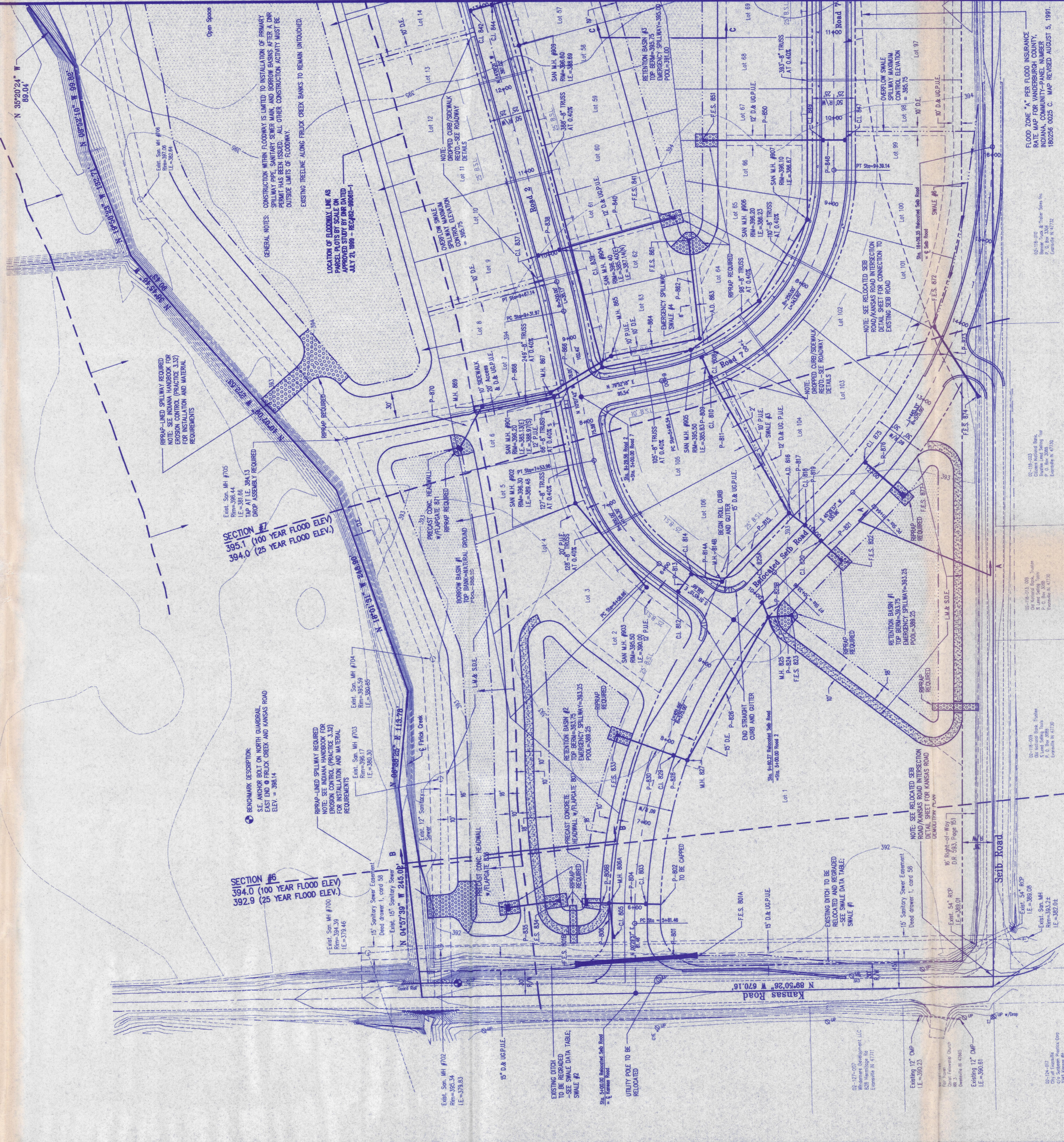


10-11-07
 Frances K. & Elmer Engle
 Registered Professional Engineers
 Evansville, Indiana 47714

Dale Schweitzer, P.E.
 3011 Forest Avenue, Room 100
 Evansville, IN 47715



FLOOD ZONE "A" PER FLOOD INSURANCE RATE MAP FOR WANDERBORG COUNTY, INDIANA, COMMUNITY-PANEL NUMBER 180256 0025 C. MAP REVISED AUGUST 5, 1991.

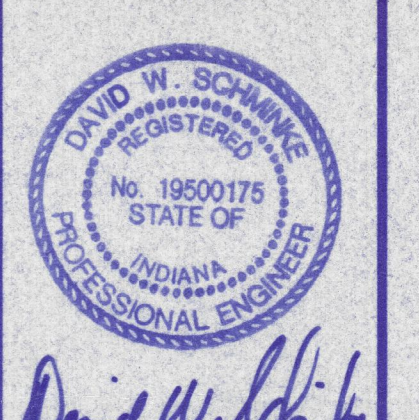
10-11-07
 Frances K. & Elmer Engle
 Registered Professional Engineers
 Evansville, IN 47714

10-11-07
 Dale Schweitzer, P.E.
 Registered Professional Engineer
 Evansville, IN 47715

Morley and Associates, Inc.
 Consulting Engineers/Surveyors/Architects
 600 S.E. Sixth Street
 Evansville, Indiana 47713
 (812) 464-9886

All ideas, designs, calculations, and arrangements indicated or represented by this drawing are owned by and the property of Morley and Associates, Inc. No part of this drawing may be reproduced, stored in a retrieval system, or transmitted in any form or by any means, electronic, mechanical, photocopying, recording, or by any information storage and retrieval system, without the written permission of Morley and Associates, Inc. Written dimensions on these drawings shall have precedence over scale dimensions. Contractors shall verify and be responsible for the accuracy of all dimensions and elevations shown on this drawing. The dimensions and elevations shown on this drawing are based on the conditions shown by these drawings.

No.	By	Date	Description



Project: Stonecreek Subdivision - Section
 Sheet Title: Utility/Drainage Plan
 Sheet #1

Scale: 1" = 60'
 Designed By: R.S.L. Job Number: 4255-4(G)
 Drawn By: G.A.H. Date: 09/05/00
 File Name: J:\4255\DWL3\4255SH1.dwg
 Sheet Number: 4