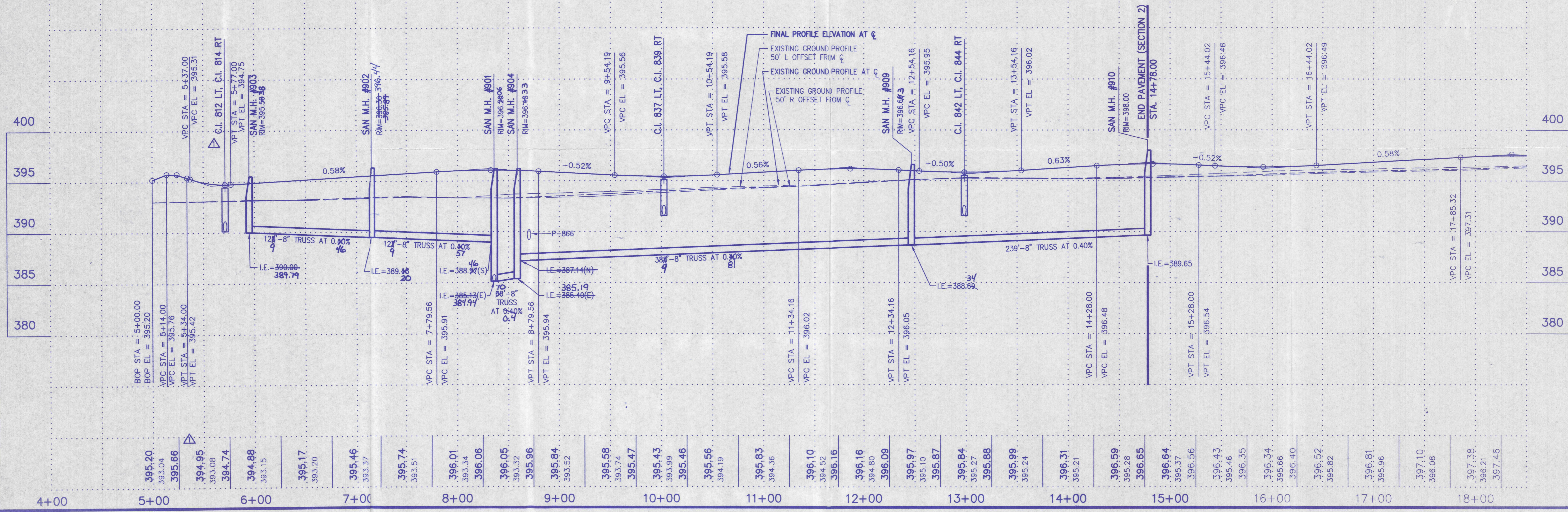


SCALES:
 1" = 50' HOR
 1" = 5' VER

GENERAL NOTES: CONSTRUCTION WITHIN FLOODWAY IS LIMITED TO INSTALLATION OF PRIMARY SPILLWAY PIPE, SANITARY SEWER MAIN, AND BORROW BASIN AFTER A DNR PERMIT HAS BEEN ISSUED. ALL OTHER CONSTRUCTION ACTIVITY MUST BE OUTSIDE LIMITS OF FLOODWAY.
 EXISTING TREELINE ALONG FIRLICK CREEK BANKS TO REMAIN UNTOUCHED.
 LOCATION OF FLOODWAY LINE AS PARCEL PLOTS BY SCALE ON APPROVED STUDY BY DNR DATED JULY 21, 1999 - RECORD-990811-1

VPI STA = 5+24.00 VPI EL = 395.76 CURVE LEN = 20.00	VPI STA = 5+57.00 VPI EL = 394.63 CURVE LEN = 40.00 LOW PT STA: 5+71.24 LOW PT = 394.73	VPI STA = 8+29.56 VPI EL = 396.20 CURVE LEN = 100.00 HIGH PT STA: 8+32.27 HIGH PT = 396.06	VPI STA = 10+04.19 VPI EL = 395.30 CURVE LEN = 100.00 LOW PT STA: 10+02.31 LOW PT = 395.43	VPI STA = 11+84.16 VPI EL = 396.30 CURVE LEN = 100.00 HIGH PT STA: 11+86.80 HIGH PT = 396.17	VPI STA = 13+04.16 VPI EL = 395.70 CURVE LEN = 100.00 LOW PT STA: 12+98.30 LOW PT = 395.84	VPI STA = 14+78.00 VPI EL = 396.80 CURVE LEN = 100.00 HIGH PT STA: 14+83.03 HIGH PT = 396.66	VPI STA = 15+94.02 VPI EL = 396.20 CURVE LEN = 100.00 LOW PT STA: 15+91.15 LOW PT = 396.34
---	---	--	--	--	--	--	--

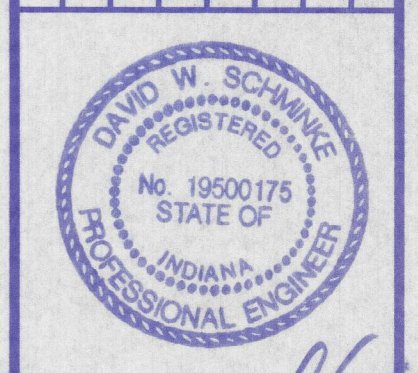


Morley and Associates, Inc.
 Consulting Engineers/Surveyors/Architects
 600 S.E. 6th Street
 Evansville, Indiana 47713
 (812) 464-9585

Revisions

No.	By	Date	Description
1	R.S.L.	3/27/00	Revisions per Vand. County Eng. Dept.
2	R.S.L.	9/27/01	San. Sewer As-Built's

No.	By	Date	Description
1	R.S.L.	3/27/00	Revisions per Vand. County Eng. Dept.
2	R.S.L.	9/27/01	San. Sewer As-Built's



David W. Schilling

Project: Stonecreek Subdivision - Section 2
 Sheet Title: Road 2 - Plan & Profile
 Station 5+00 - 14+78.00

Scale: 1" = 50' HORIZ.
 1" = 5' VERT.
 Designed By: R.S.L. Job Number: 4255-4(G)
 Drawn By: G.A.H. Date: 04/20/00
 File Name: I:\4255\GVL3\RCP01002.dwg
 Sheet Number: 5 of 12