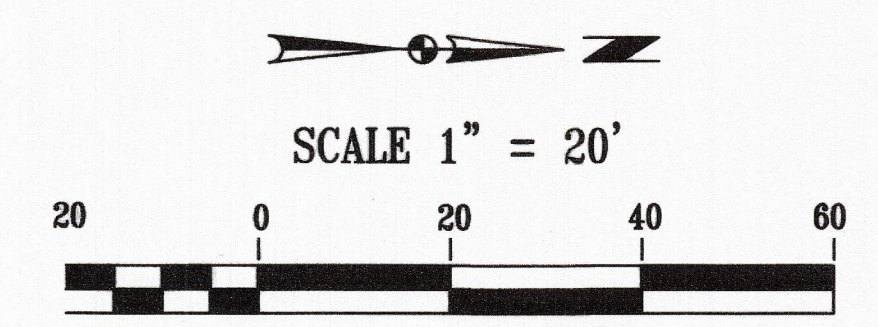
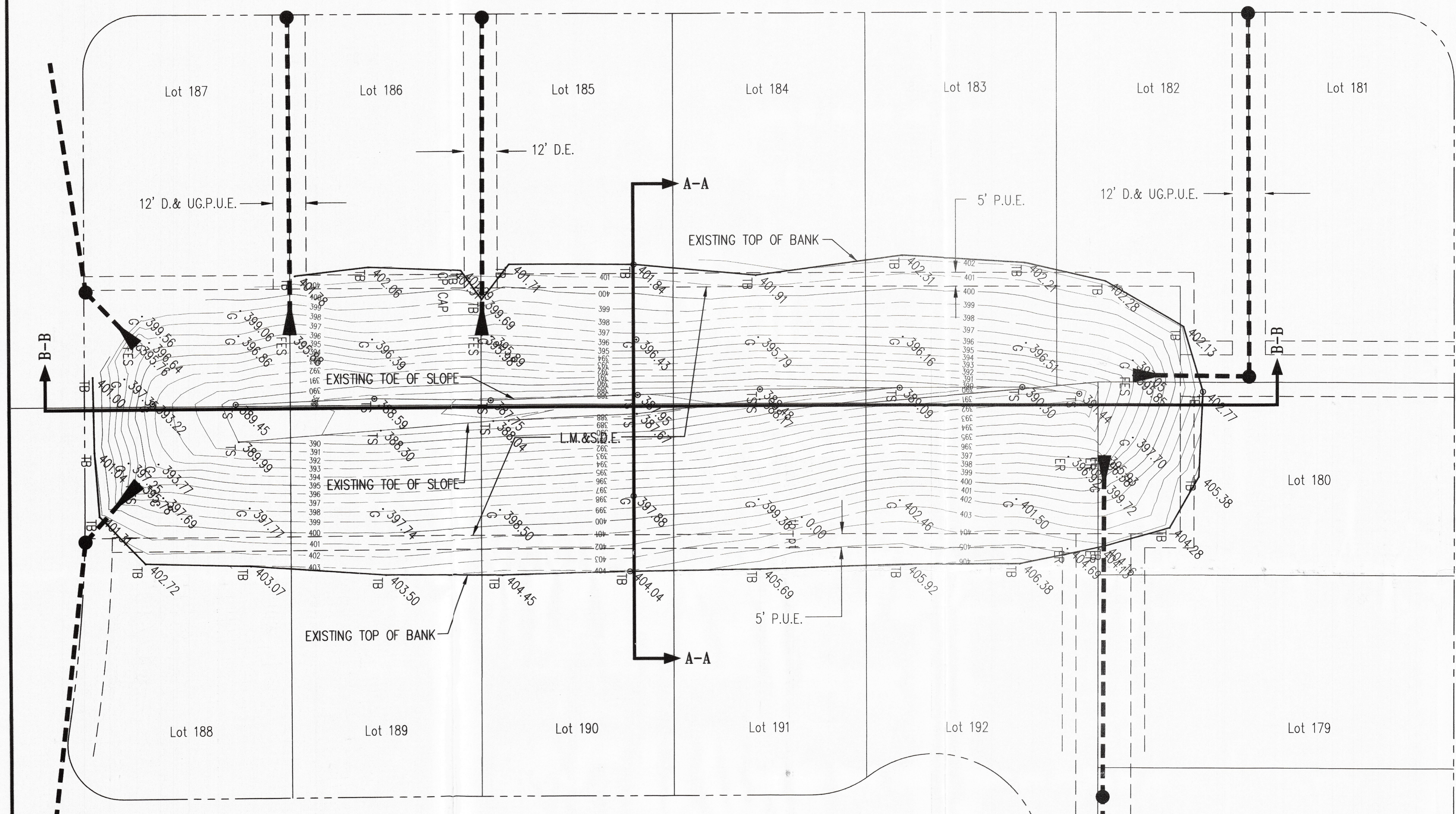
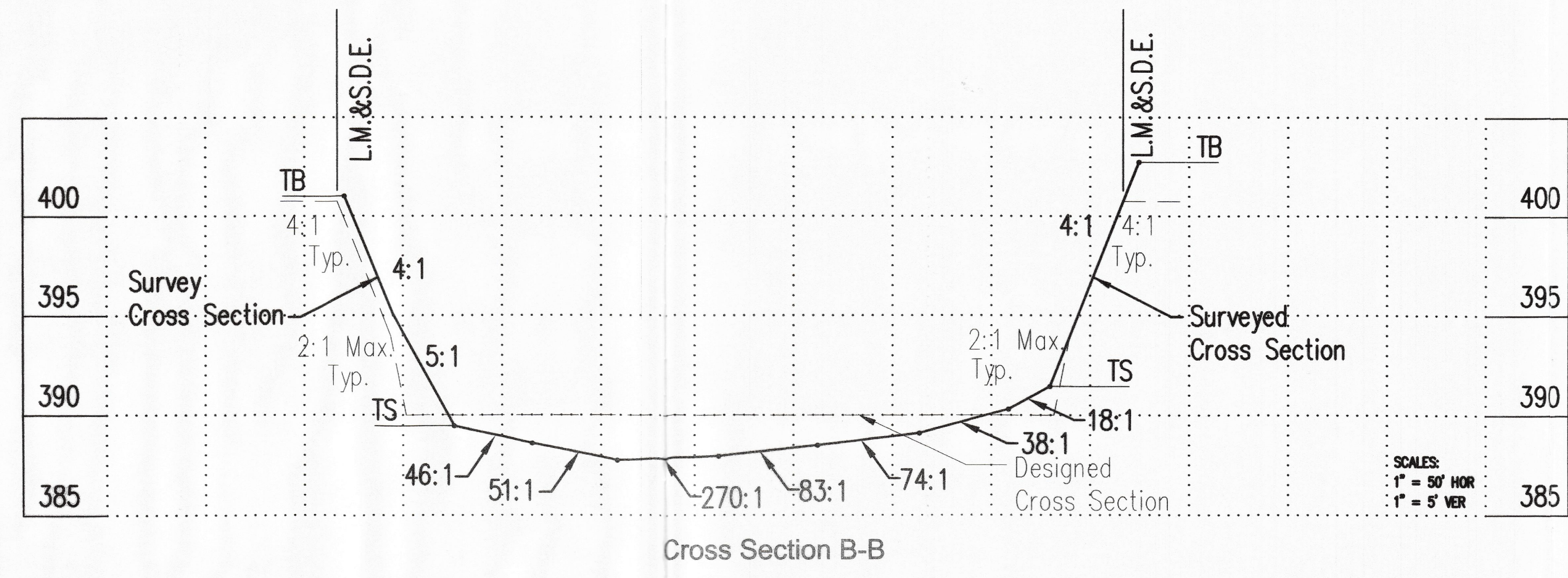
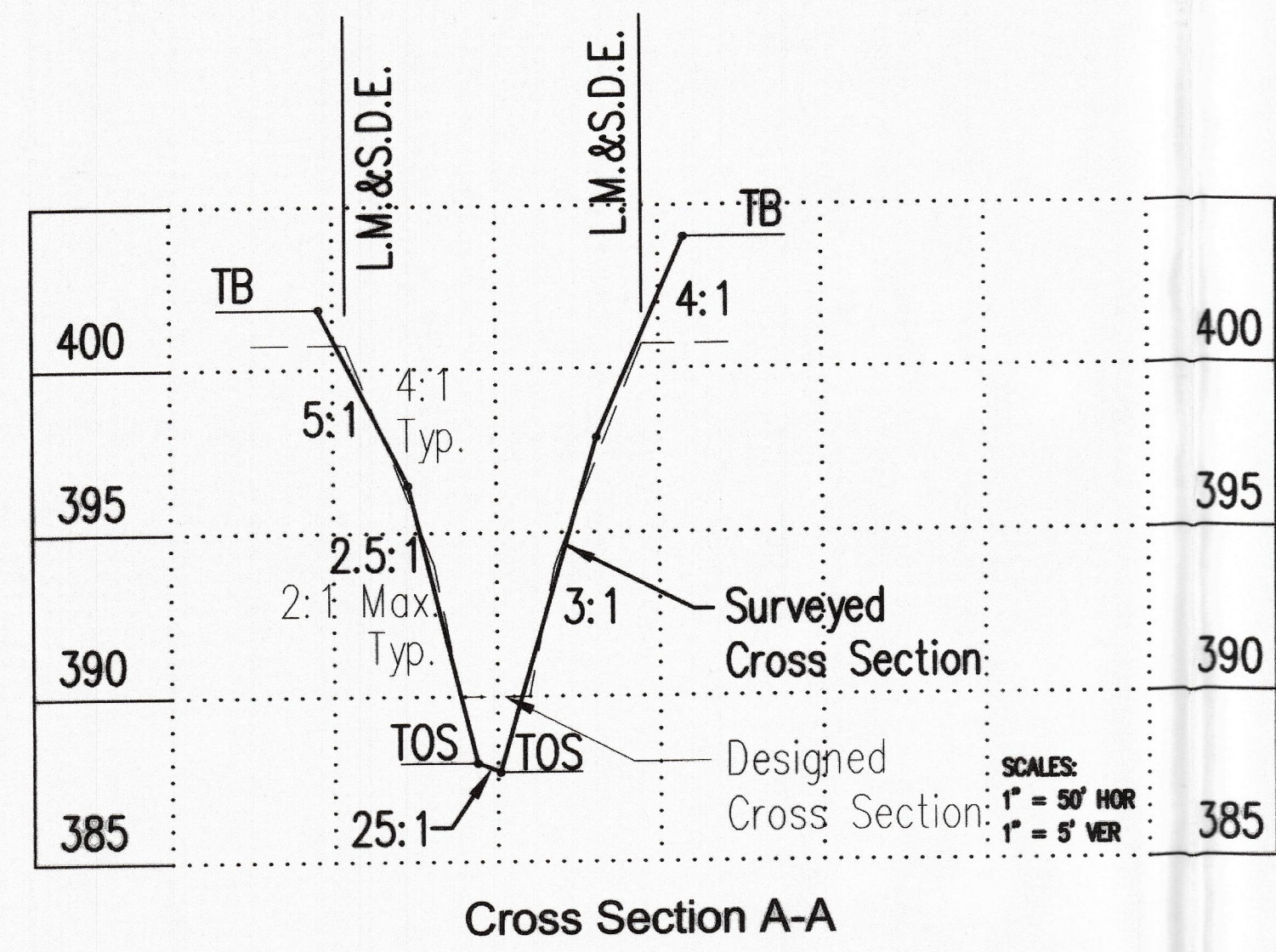


Clippinger Road



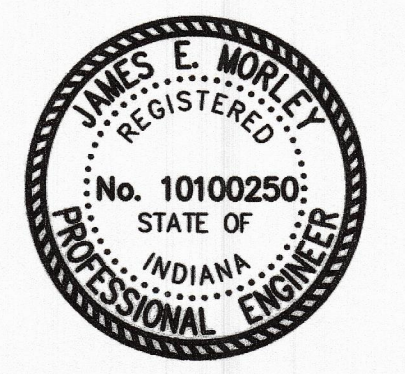
Mooring Road

**LEGEND:**  
 TB = TOP OF BANK TOPO POINT  
 TS = TOE OF SLOPE TOPO POINT  
 G = GROUND TOPO POINT



I, James E. Morley certify and affirm that the completed storm water drainage system for this project is in general compliance with the Final Drainage Plan as approved by the Vanderburgh County Drainage Board.

Signature: *James E. Morley* 9-4-08  
 P.E. 10100250  
 Indiana Registration Number



**Morley and Associates Inc.**  
 Engineering, Surveying, Architecture, Construction Management  
 Evansville, IN  
 Henderson, KY  
 Jasper, IN  
 (812) 464-8585  
 (270) 850-0300  
 www.morleyandassociates.com

No.	By	Date	Description

Project Name: Stonecreek Subdivision  
 Sheet Title: **Retention Basin #5**  
 Record Drawing

Scale: As Shown  
 Designed By: JEM  
 Job Number: 4255-4(G)  
 Drawn By: GAH  
 Date: 9/04/08  
 Filename: J:\4255\Civil\Basin #5 As-Built  
 Basin #5 As-Built 08-26-08.dwg  
 Sheet Number: **REC01**