

I, Ronald S. London, certify and affirm that the completed storm water drainage system for this project complies with the Final Drainage Plan as approved by the Vanderburgh County Drainage Board.

*Ronald S. London*

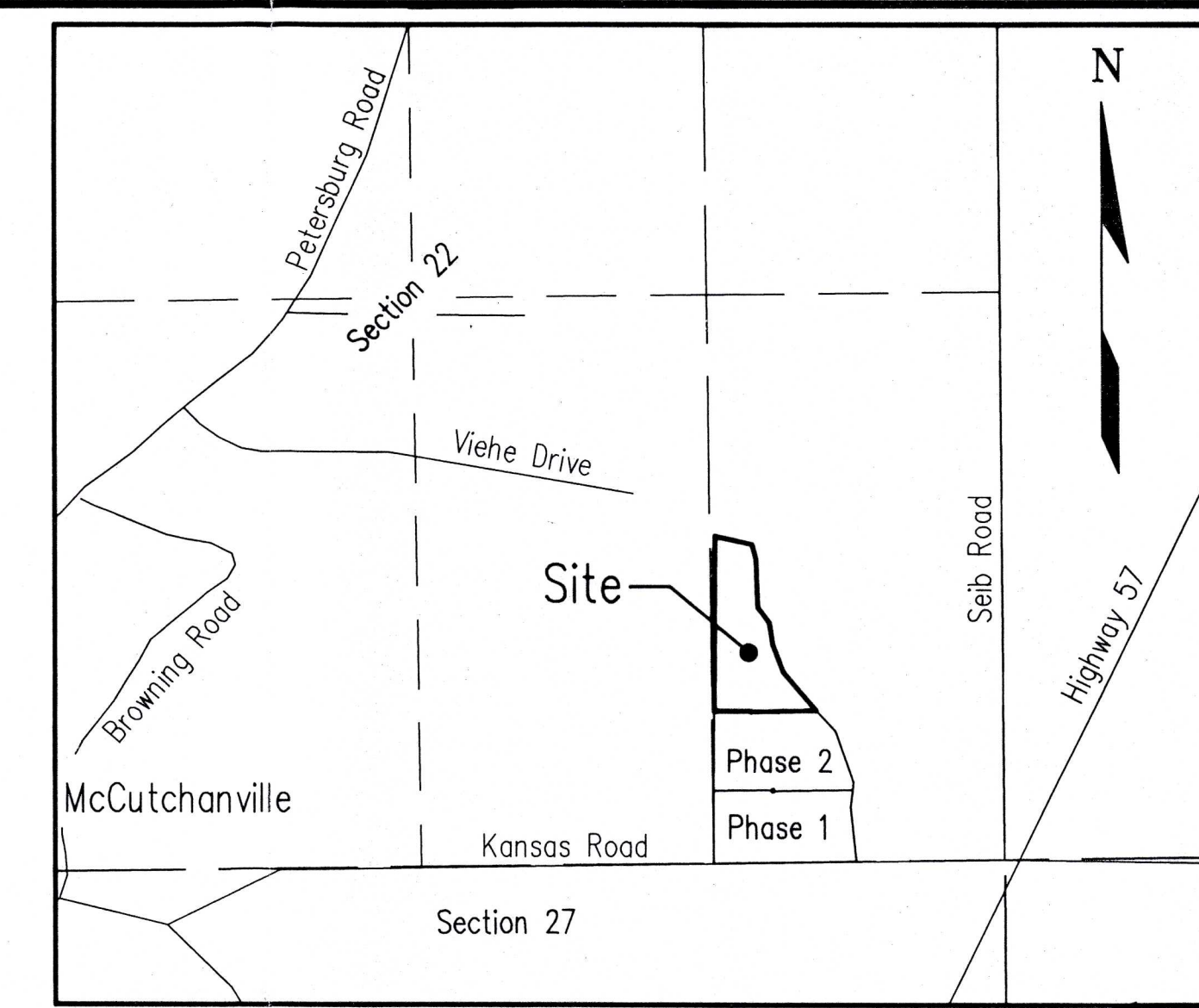
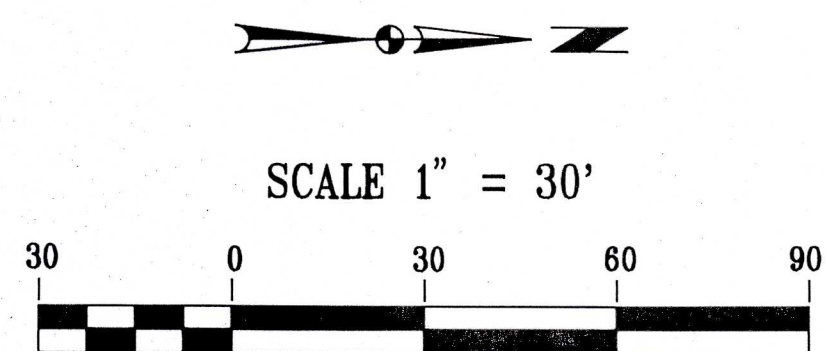
Signature

PE 10101229

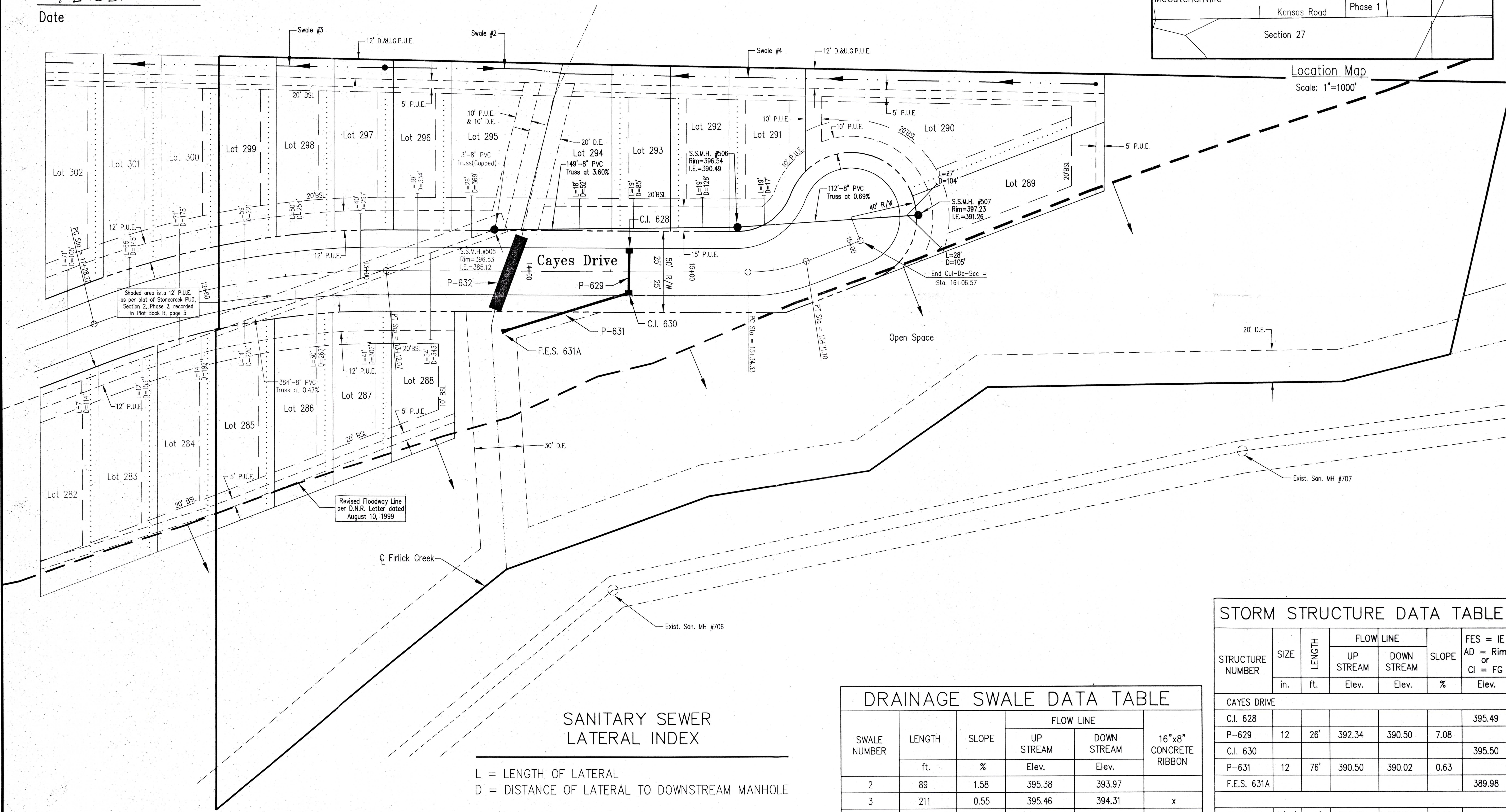
Indiana Registration Number

9-2-03

Date



Location Map  
Scale: 1"=1000'



SANITARY SEWER LATERAL INDEX

L = LENGTH OF LATERAL  
D = DISTANCE OF LATERAL TO DOWNSTREAM MANHOLE

SWALE NUMBER	LENGTH ft.	SLOPE %	FLOW LINE		16"x8" CONCRETE RIBBON
			UP STREAM Elev.	DOWN STREAM Elev.	
2	89	1.58	395.38	393.97	
3	211	0.55	395.46	394.31	x
4	318	0.64	395.15	393.13	x

STRUCTURE NUMBER	SIZE in. ft.	LENGTH ft.	FLOW LINE		SLOPE %	FES = IE AD = Rim or CI = FG Elev.
			UP STREAM Elev.	DOWN STREAM Elev.		
CAYES DRIVE						
C.I. 628						395.49
P-629	12	26'	392.34	390.50	7.08	
C.I. 630						395.50
P-631	12	76'	390.50	390.02	0.63	
F.E.S. 631A						389.98
P-632	8'x4'	48'	389.35	388.84	1.06	

NOTE: ALL PIPE ARE R.C.P. UNLESS OTHERWISE NOTED

**Morley and Associates, Inc.**  
Consulting Engineers/Surveyors/Architects  
600 S.E. Sixth Street  
Evansville, Indiana 47713  
(812) 484-9586

No.	By	Date	Description

Project: Stonecreek P.U.D. Section 2 - Phase 3  
Sheet Title: Utility/Drainage Plan Record Drawing  
Scale: 1" = 30'  
Designed By: R.S.L. Job Number: 4255-4(H)  
Drawn By: G.A.M. Date: 9/2/03  
Filename: J:\4255\Ch42\BASERECORDPUD3.dwg  
Sheet Number: 1 of 1