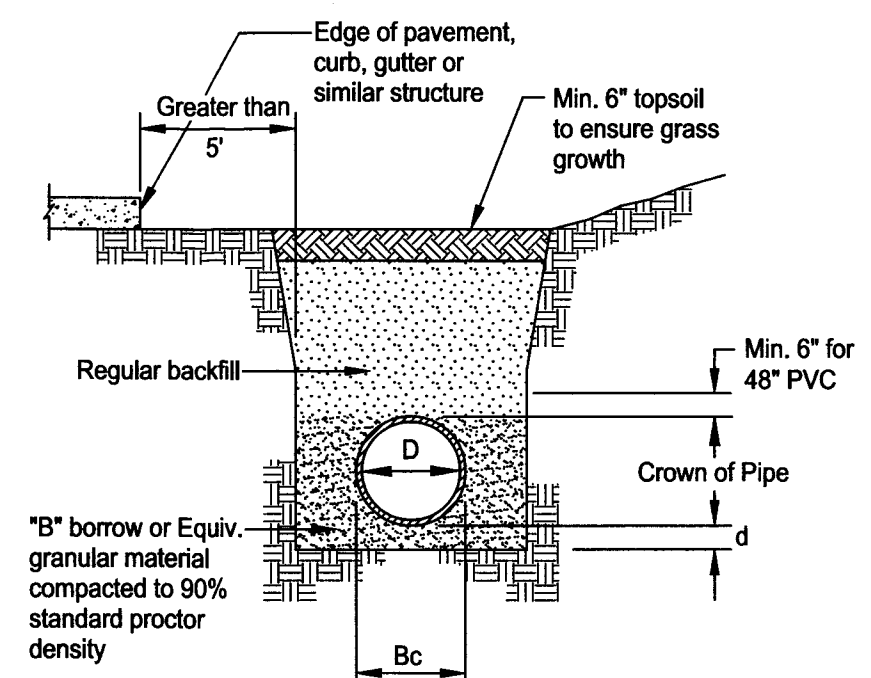


**Typical Cross Section of Swales #1 thru #7**

No Scale



**Greater Than 5' From Edge Of Pavement**

Minimum Trench Widths

D	Min. Width
12"	31"
15"	35"
18"	43"
24"	56"
30"	66"
36"	78"
42"	84"
48"	91"
54"	97"
60"	103"

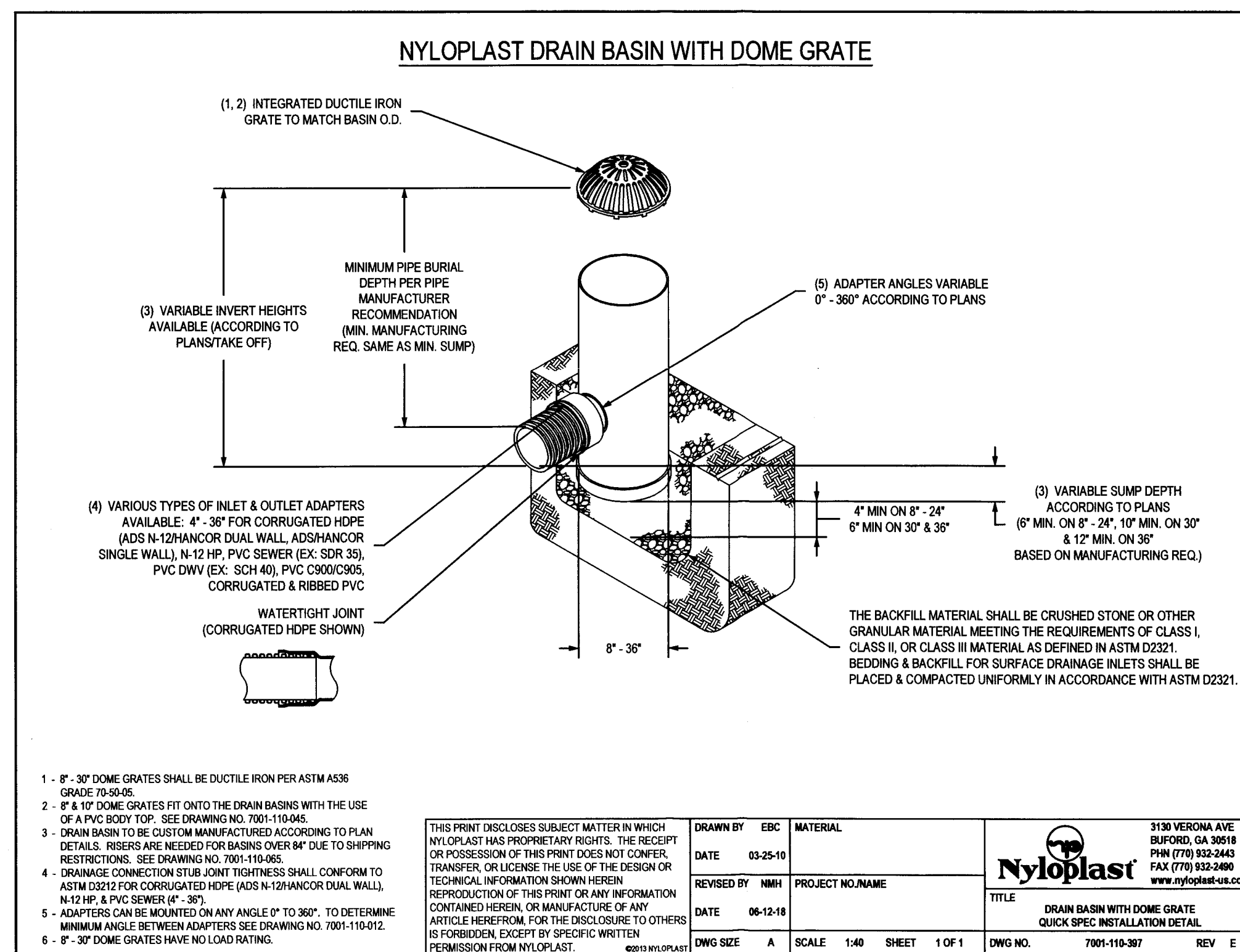
- Notes:
- All bedding & initial backfill shall be installed in 6" to 8" balanced lifts.
  - A minimum cover of 12" shall be provided from the top of pipe to the ground surface.
  - Installation shall be in accordance with the pipe manufacturer's minimum recommended standards and / or this detail, whichever is greater.

Legend: Depth of Bedding Material Below Pipe

D	(d) Min.
12" & 15"	5"
18" & 24"	6"
48"	6"

**Polyvinyl Chloride & High Density Polyethylene Pipe Trench (Greater than 5ft. from Edge of Pavement)**

No Scale



- 8" - 30" DOME GRATES SHALL BE DUCTILE IRON PER ASTM A536 GRADE 70-50-05.
- 8" & 10" DOME GRATES FIT ONTO THE DRAIN BASIN WITH THE USE OF A PVC BODY TOP. SEE DRAWING NO. 7001-110-045.
- DRAIN BASIN TO BE CUSTOM MANUFACTURED ACCORDING TO PLAN DETAILS. RISERS ARE NEEDED FOR BASINS OVER 84" DUE TO SHIPPING RESTRICTIONS. SEE DRAWING NO. 7001-110-005.
- DRAINAGE CONNECTION STUD JOINT TIGHTNESS SHALL CONFORM TO ASTM D2322 FOR CORRUGATED HDPE (ADS N-12/HANDOR DUAL WALL, N-12 HP, & PVC SENDER 4" - 36").
- ADAPTERS CAN BE MOUNTED ON ANY ANGLE 0° TO 360°. TO DETERMINE MINIMUM ANGLE BETWEEN ADAPTERS SEE DRAWING NO. 7001-110-012.
- 8" - 30" DOME GRATES HAVE NO LOAD RATING.

THIS PRINT DISCLOSES SUBJECT MATTER IN WHICH NYLOPLAST HAS PROPRIETARY RIGHTS. THE RECEIPT OR POSSESSION OF THIS PRINT DOES NOT CONFER, TRANSFER, OR LICENSE THE USE OF THE DESIGN OR TECHNICAL INFORMATION SHOWN HEREIN. REPRODUCTION OF THIS PRINT OR ANY INFORMATION CONTAINED HEREIN, OR MANUFACTURE OF ANY ARTICLE HEREFROM, FOR THE DISCLOSURE TO OTHERS IS FORBIDDEN, EXCEPT BY SPECIFIC WRITTEN PERMISSION FROM NYLOPLAST.

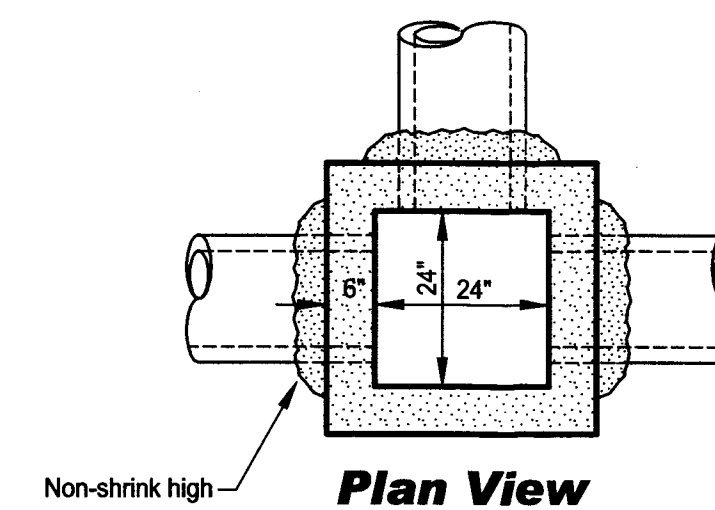
DRAWN BY	EBK	MATERIAL	
DATE	03-25-10		
REVISED BY	MHI	PROJECT NO./NAME	
DATE	06-12-18		

3130 VERONA AVE  
BUFORD, GA 30518  
PHN (770) 932-2443  
FAX (770) 932-2460  
www.nyloplast.com

**Nyloplast**

TITLE: DRAIN BASIN WITH DOME GRATE  
QUICK SPEC INSTALLATION DETAIL

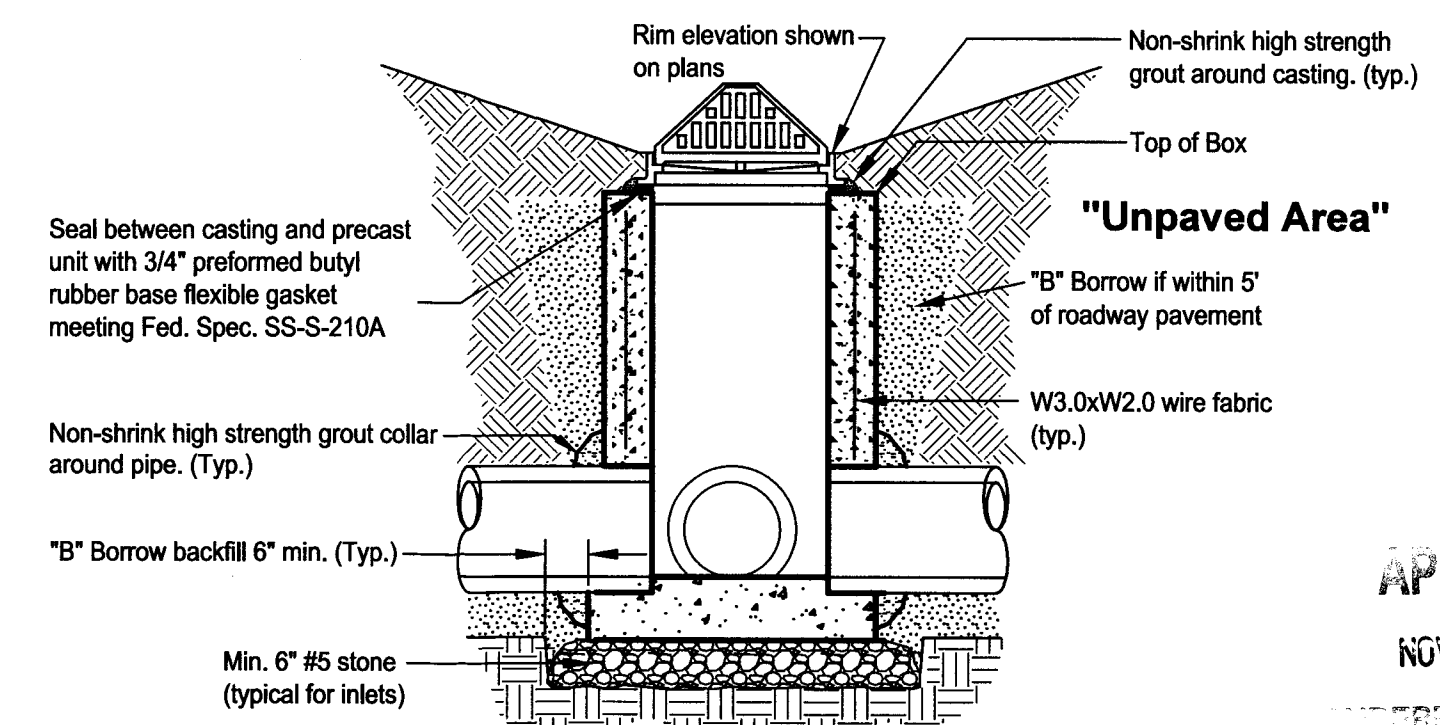
DWG NO. 7001-110-387 REV E



Non-shrink high strength grout (Typ.)

**Notes**

- For area inlet in non-paved areas: East Jordan #6500 casting, or equal, with adapter ring.
- All connecting pipes shall be grouted with a high strength non-shrink grout.
- Precast box shall conform to ASTM C-478.
- Reinforcement shall be 3" x 6" W3.0xW2.0 wire fabric for precast units.
- The inlet shall be backfilled with "B" Borrow and mechanically compacted in 8" lifts to 95% of standard density ASTM 698.

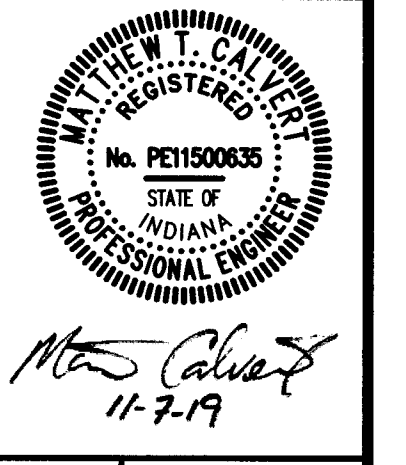


**Precast 24" x 24" Box**

No Scale

All ideas, designs, calculations, and arrangements indicated or represented by this drawing are the property of Morley and Associates, Inc. and shall remain the property of Morley and Associates, Inc. No part of this drawing shall be reproduced or transmitted in any form or by any means, electronic or mechanical, including photocopying, recording, or by any information storage and retrieval system, without the prior written permission of Morley and Associates, Inc. The user of this drawing shall be responsible for all dimensions and conditions shown on this drawing. If there are any discrepancies between the electronic file and the signed and sealed hard copy drawings, the hard copy shall govern.

No.	By	Date	Description



The Reserve at Hidden Lake  
First National Bank of Carmi

**Amendment to the Storm Drainage Details**

Scale: As Shown

Designed By: LAM Job Number: 8716.4.002-B  
Drawn By: DWN Date: 09/03/2014

Filename: 8716Civil 3D/8716 Civil Details.dwg  
Sheet Number: C502A

RECEIVED BY THE  
VANDERBURGH COUNTY  
SURVEYOR'S OFFICE  
11-8-19