

All ideas, designs, calculations, and arrangements indicated or represented by this drawing are owned by and are the property of Morley and Associates, Inc. and were created as instruments of service for use on and in connection with the specified project. Morley and Associates retains all common law, statutory law and other rights, including copyrights. No drawings or electronic files shall be used for any purpose other than the project. They shall not be disclosed to or be used by any other person or firm without the written consent of Morley and Associates, Inc.

Within dimensions on these drawings shall have precedence over scale dimensions. Contractors shall verify and be responsible for all dimensions and conditions on the job and Morley and Associates, Inc. must be notified of any variations from the dimensions and conditions shown by these drawings.

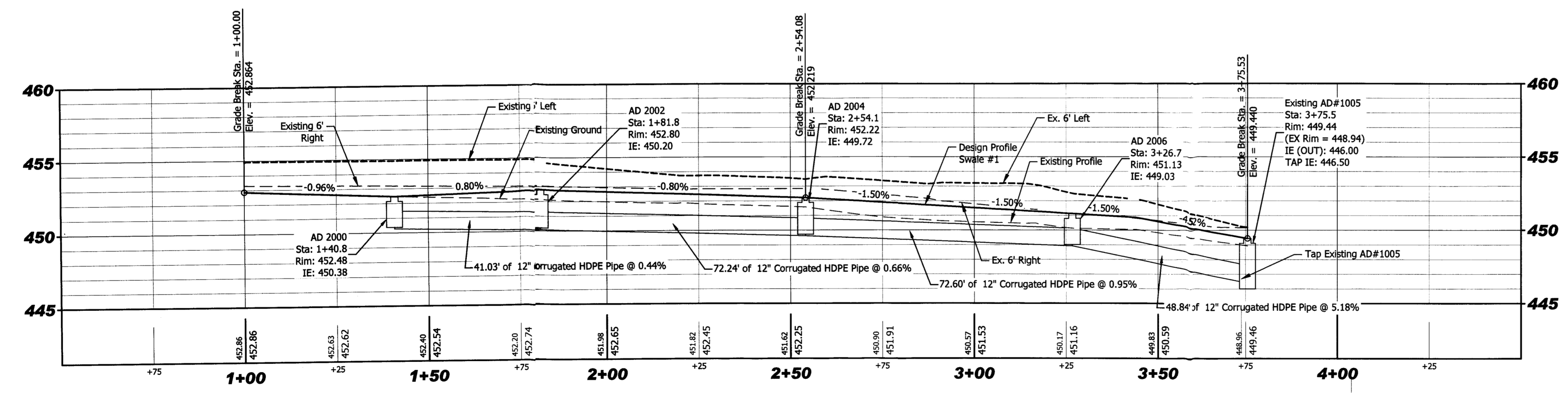
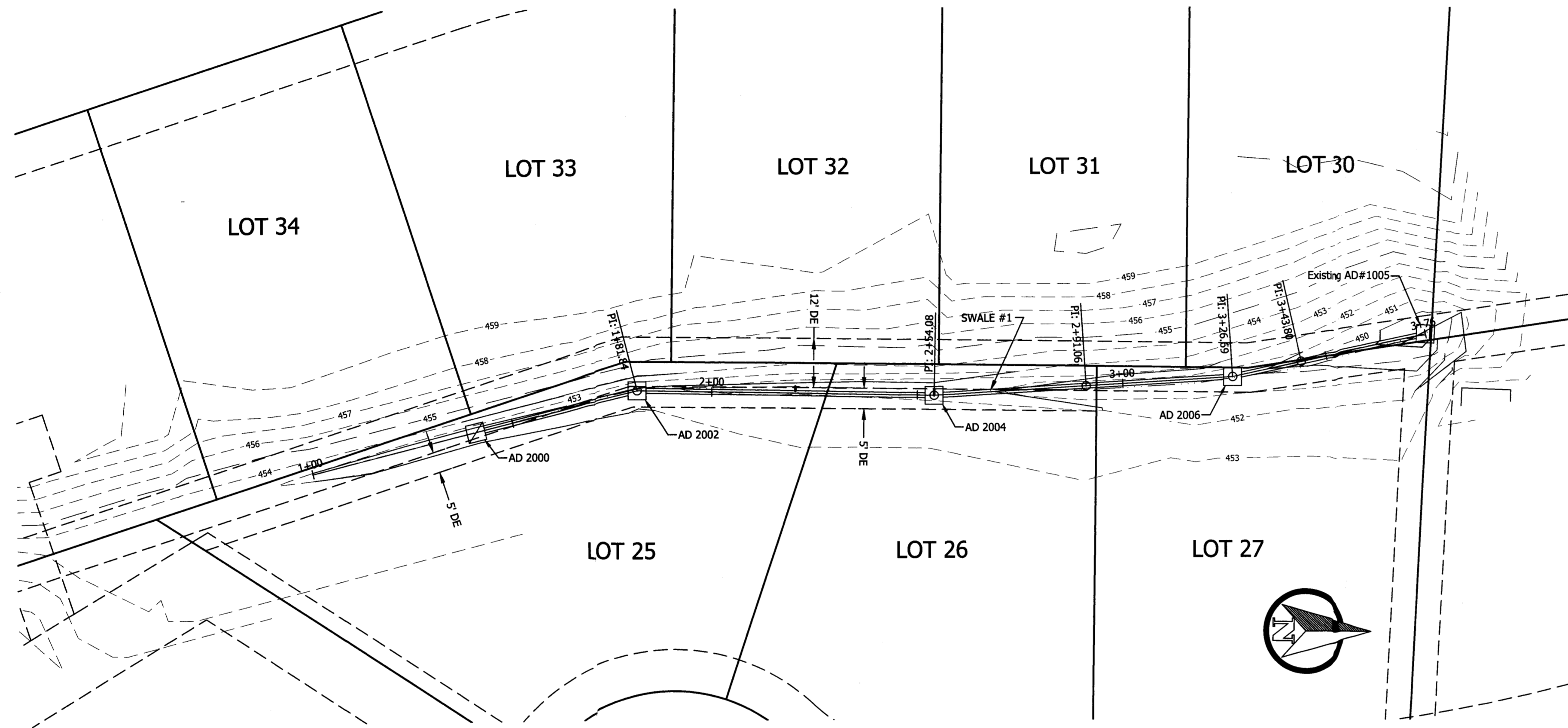
If differences exist between electronic files and the signed and sealed hard copy drawings, the hard copy shall govern.

4800 Rosebud Ln., Newburgh, IN 47630
812.464.9585 phone 812.464.2514 fax
morleycorp.com

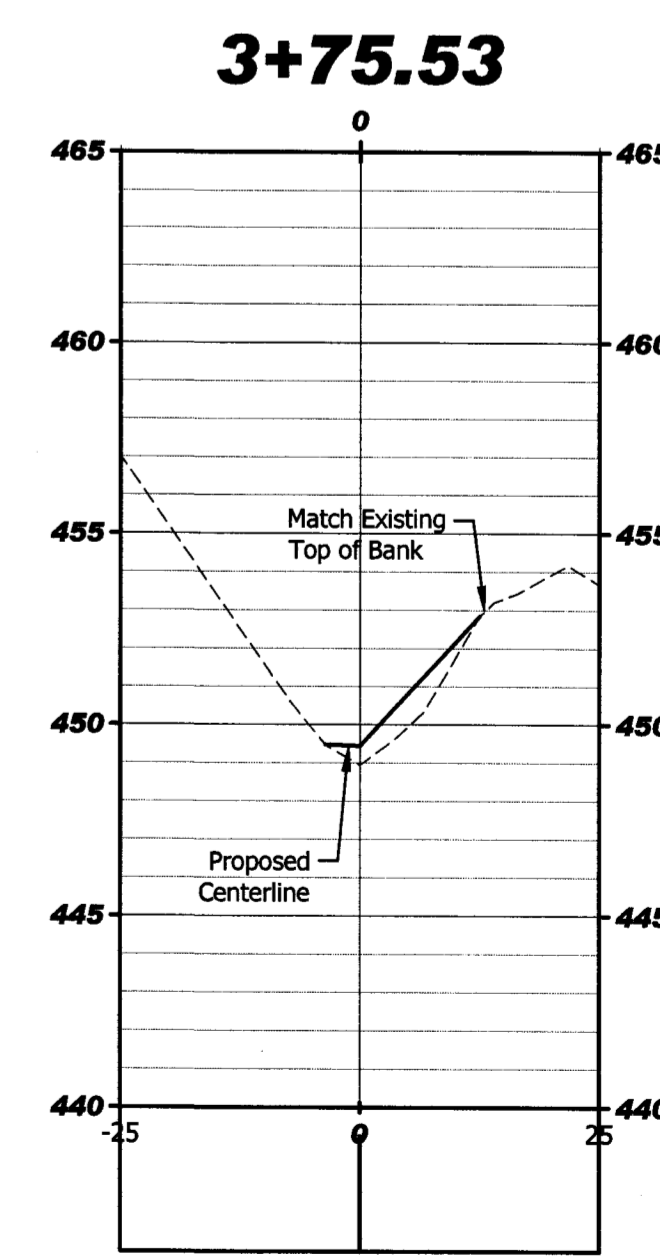
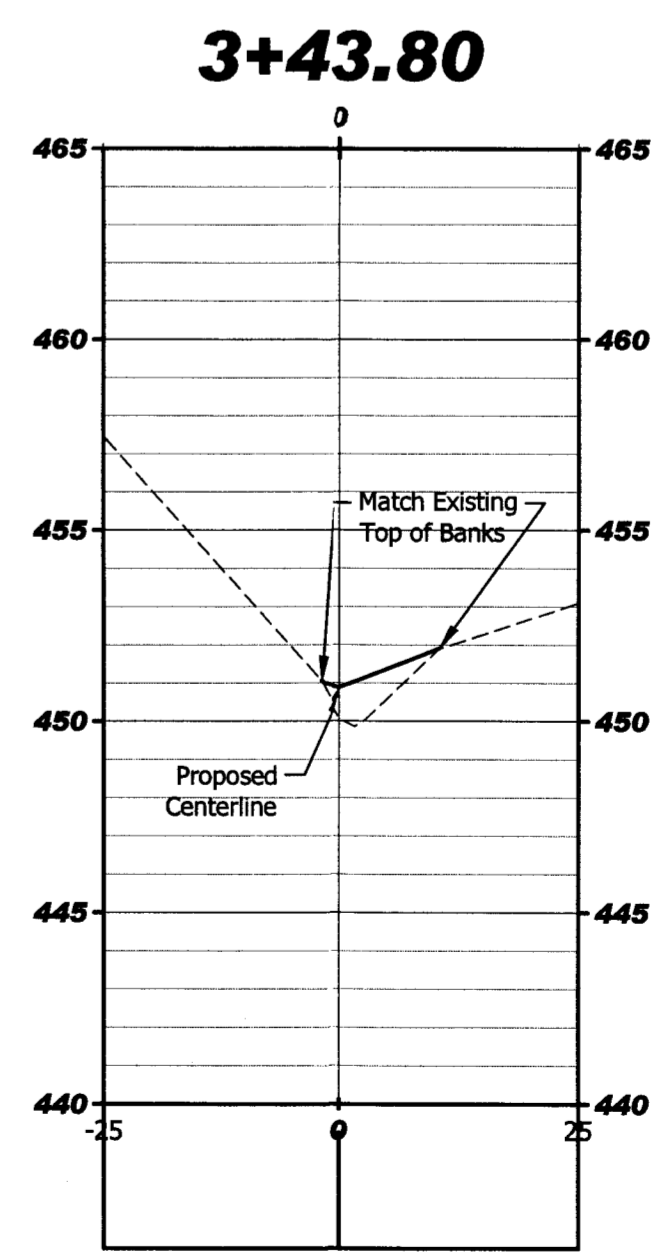
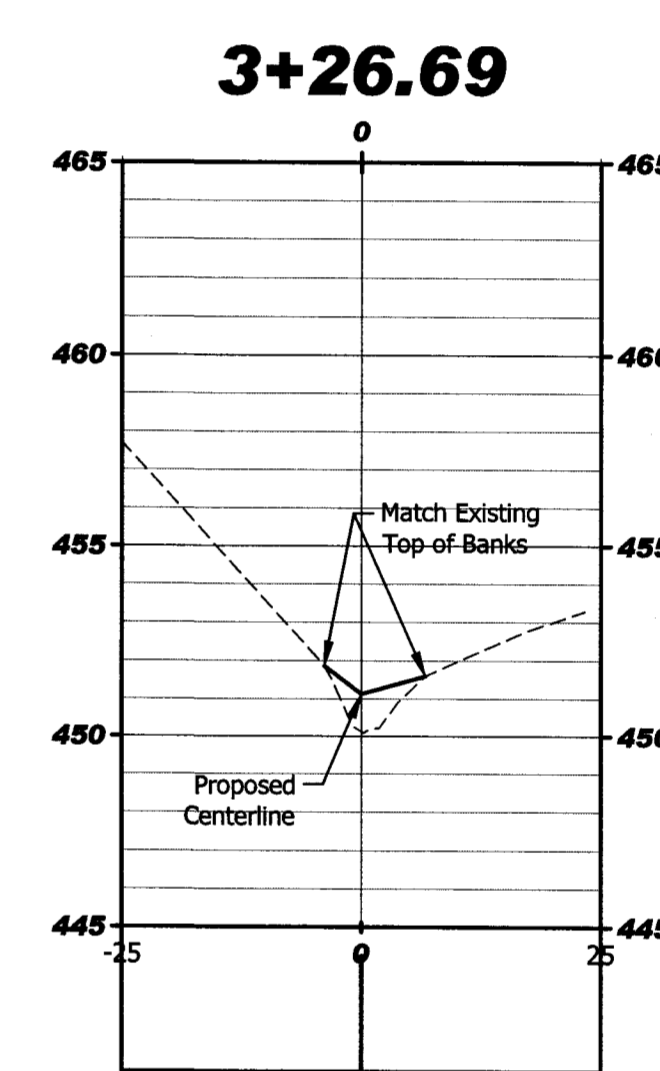
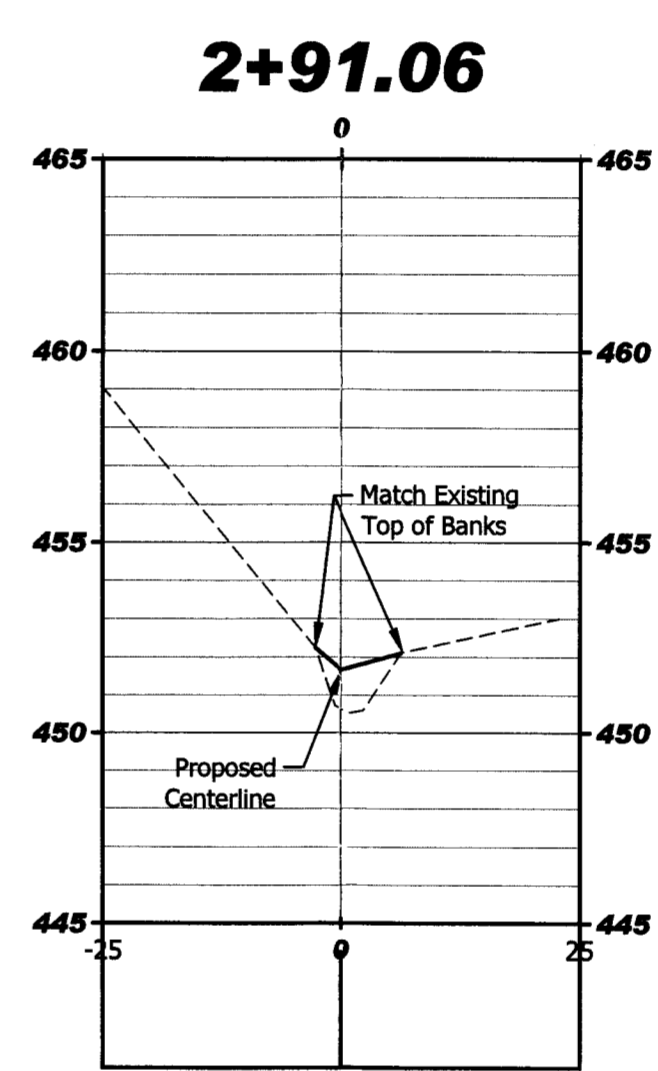
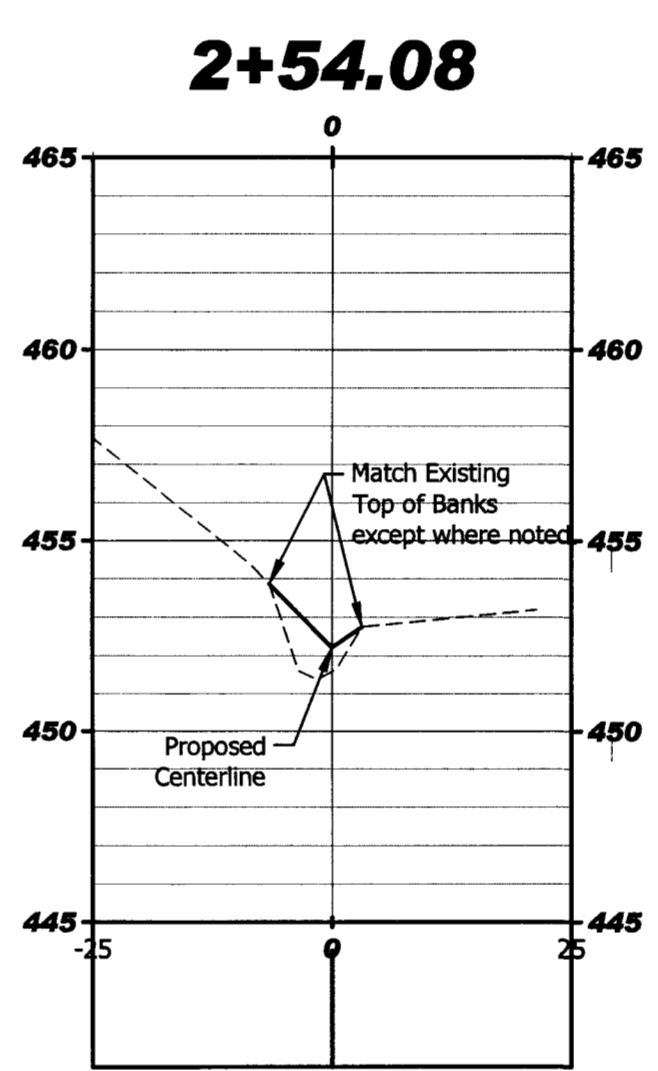
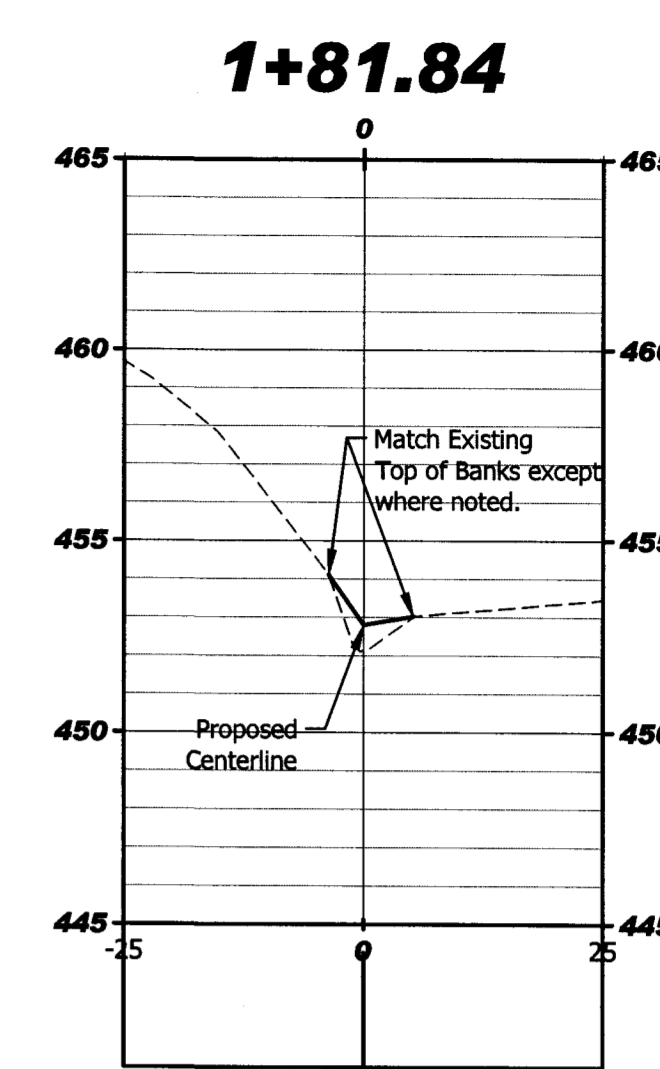
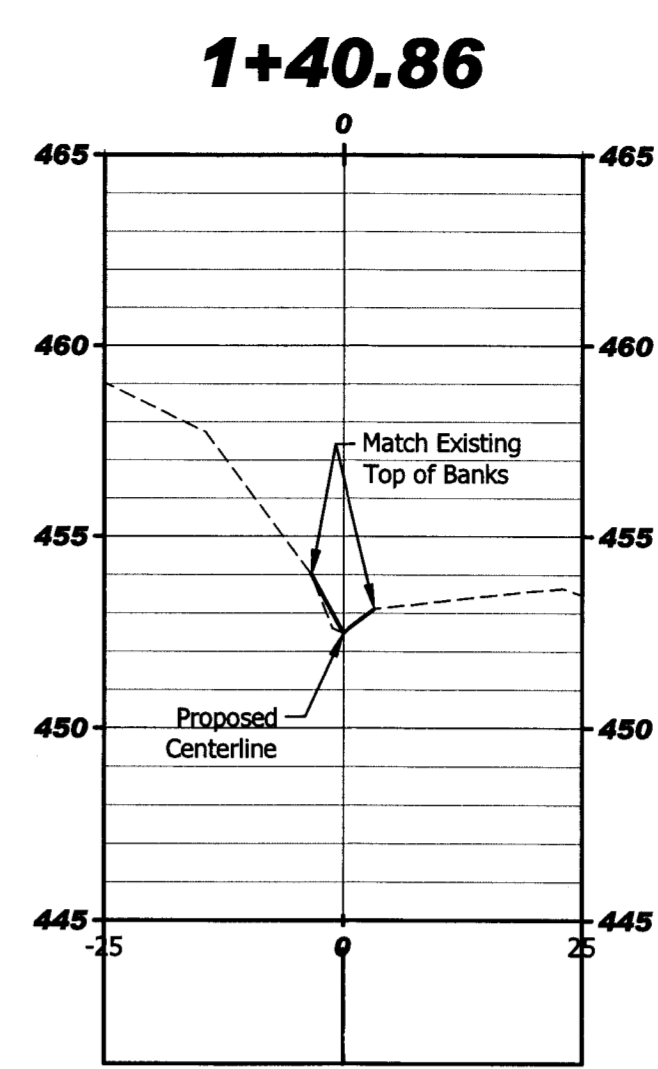
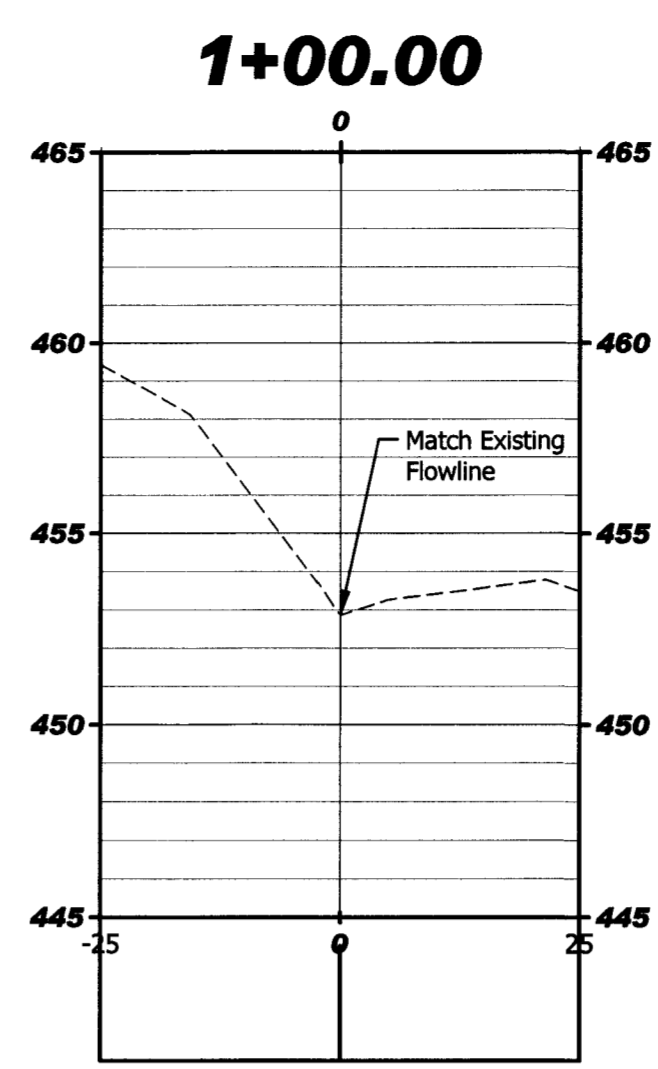
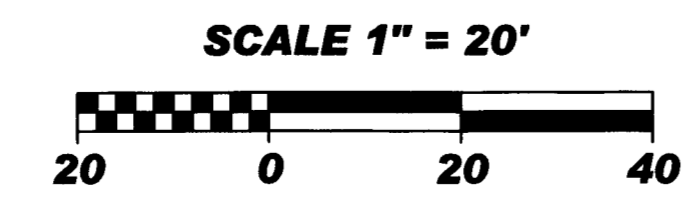
The Reserve at Hidden Lake
First National Bank of Carmi

APPROVAL
NGV 12 2019
**Storm Sewer
Line '1'
Plan**

No.	By	Date
Revisions		
Scale: 1" = 20' H, 1" = 5' V		
Designed By:	MTC	Job Number: 8716.4.001B
Drawn By:	MTC	Date: 10/28/2019
Filename:	8716 Storm Sewer Line 1	
Sheet Number:	C-106	



**SWALE #1/STORM SEWER LINE '1'
PLAN AND PROFILE**



SWALE #1 CROSS SECTIONS

RECEIVED BY THE
VANDERBURGH COUNTY
SURVEYOR'S OFFICE
10-29-19